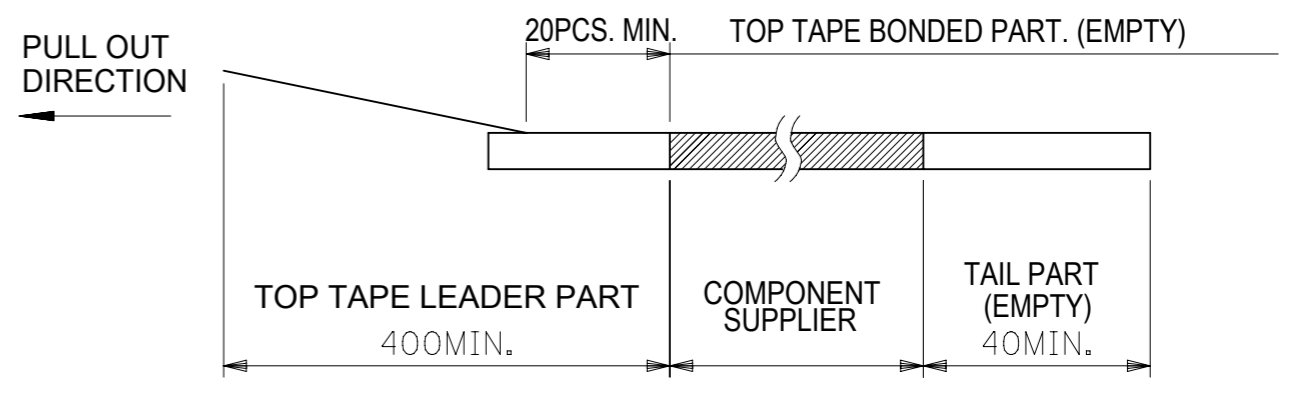
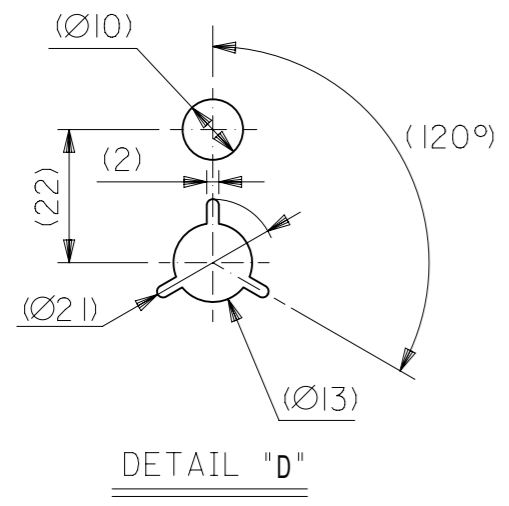


NOTES

1. DETAILED DIMENSIONS, SEE PRODUCT DRAWING.
2. NUMBER OF CONNECTORS : 8000PCS/REEL
3. LEAD TAPE LENGTH

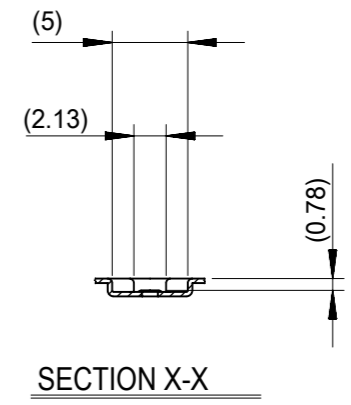
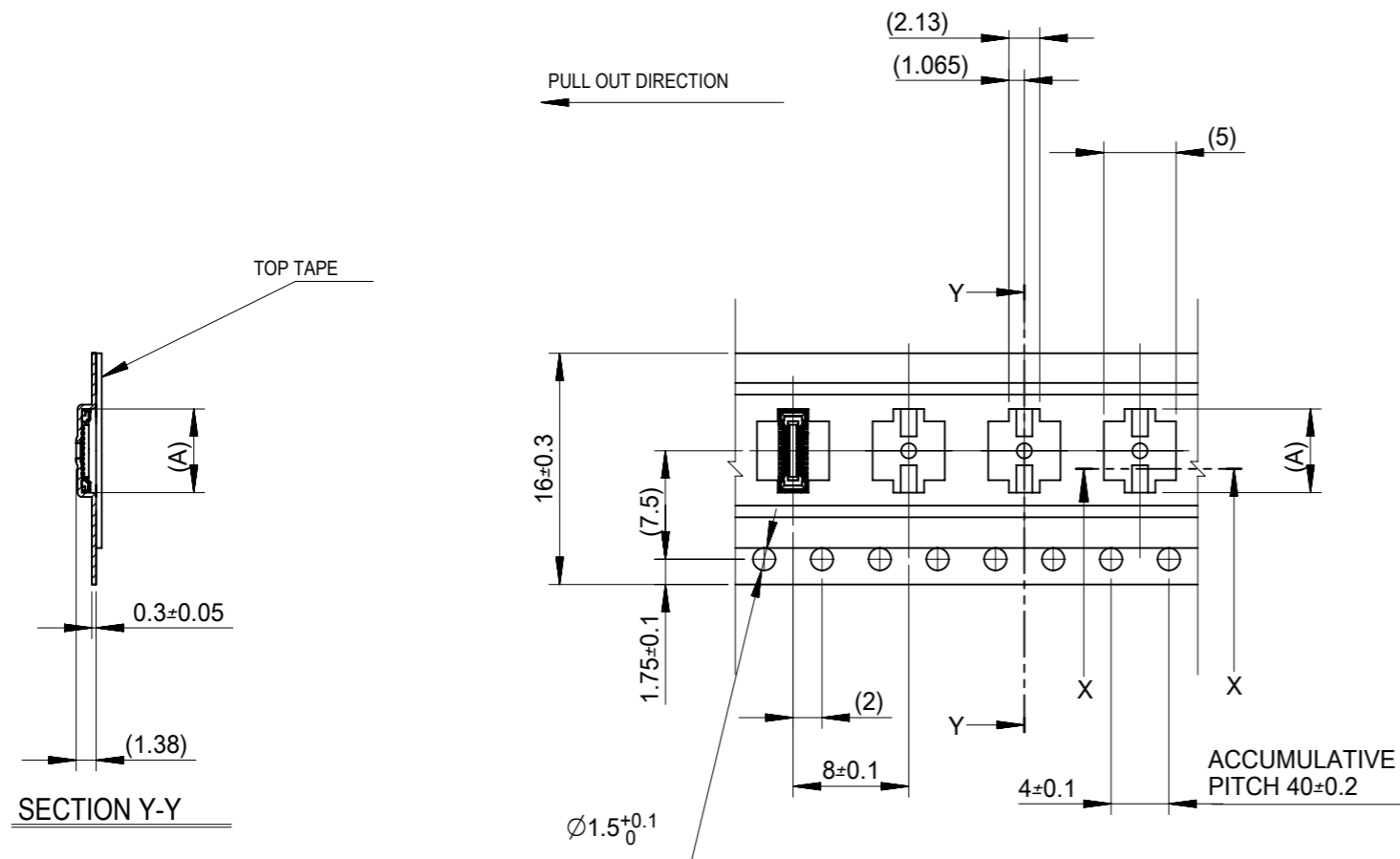


4. TOP TAPE PEEL FORCE IS DEFINED BY IEC60286-3.
5. MATERIAL
 CARRIER TAPE : POLYSTYRENE
 TOP TAPE : PET , OTHER
 REEL : POLYSTYRENE (PS) <RECYCLE MATERIAL CONTAINED>



MODEL NO. 504618-**12

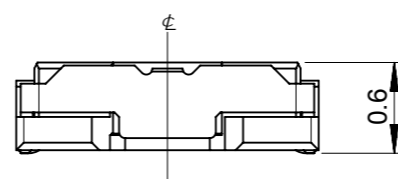
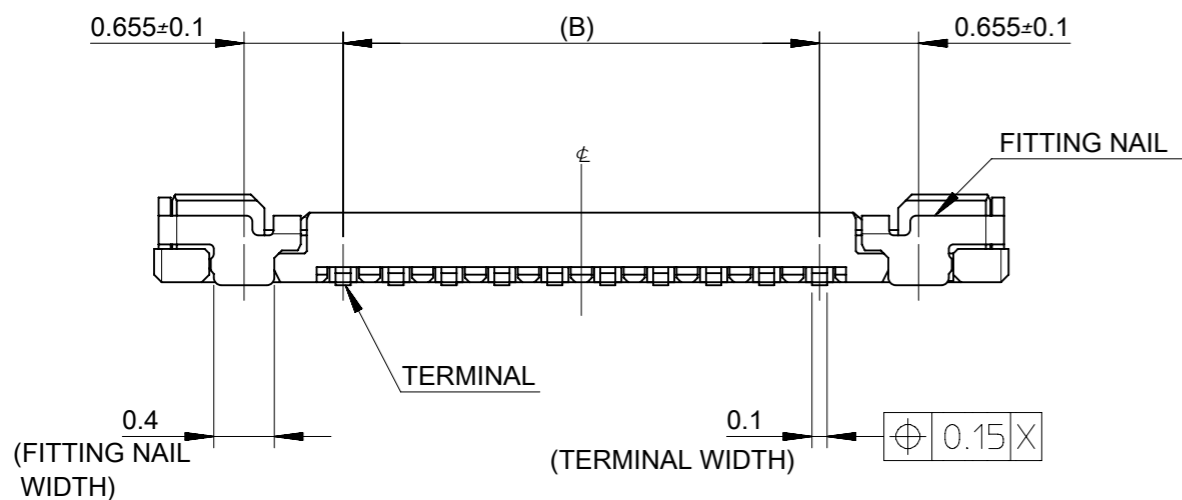
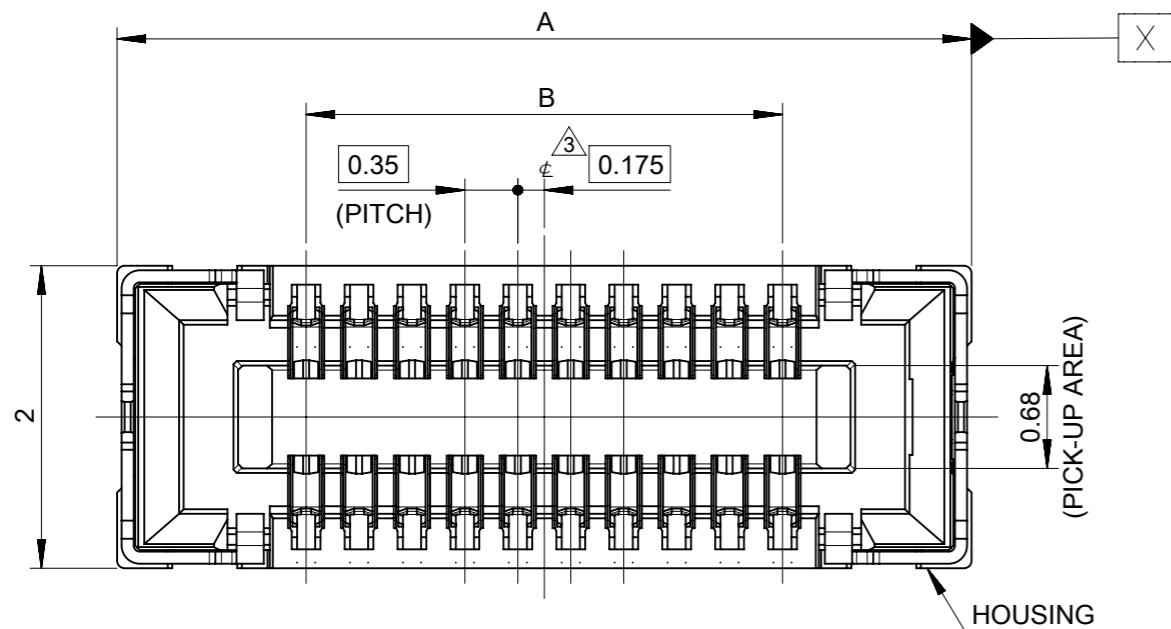
THIS DRAWING CONTAINS INFORMATION THAT IS PROPRIETARY TO MOLEX ELECTRONIC TECHNOLOGIES, LLC AND SHOULD NOT BE USED WITHOUT WRITTEN PERMISSION									
DIMENSION UNITS	SCALE	CURRENT REV DESC: REMOVED OBSOLETE PART NUMBERS AS PER PCN#516673							
mm	1:5								
GENERAL TOLERANCES (UNLESS SPECIFIED)									
ANGULAR TOL	± °	EC NO: 850267 DRWN: SAMPRS 2026/01/23 CHK'D: GGA 2026/03/13 APPR: GGA 2026/03/13							
4 PLACES	±	INITIAL REVISION:							
3 PLACES	±	DRWN: TNISHIDA02 2017/03/29							
2 PLACES	±	APPR: TKUSUHARA01 2017/04/03							
1 PLACE	±	DOCUMENT NUMBER							
0 PLACES	±	5046180000							
DRAFT WHERE APPLICABLE MUST REMAIN WITHIN DIMENSIONS		THIRD ANGLE PROJECTION	DRAWING	SERIES	MATERIAL NUMBER	CUSTOMER	DOC TYPE	DOC PART	REVISION
			A3-SIZE	504618	SEE CHART	GENERAL	PSD	004	A2
									SHEET NUMBER
									1 OF 2



16	21.4	17.4	5.79	504618-2012	○	---	20
キャリアテープ幅 CARRIER TAPE WIDTH	C	B	(A)	EMBOSSSED TAPE PACKAGE ORDER NO.	HIGH VOL. TOOL SAMPLE PREPARATION ○ : TOOLED △ : WORK IN PROCESS --- : TOOLING TO BE CONFIRMED	LOW VOL. TOOL	CIRCUIT
CONNECTOR SERIES NO.:504618-**09							

THIS DRAWING CONTAINS INFORMATION THAT IS PROPRIETARY TO MOLEX ELECTRONIC TECHNOLOGIES, LLC AND SHOULD NOT BE USED WITHOUT WRITTEN PERMISSION

DIMENSION UNITS mm	SCALE 2:1	CURRENT REV DESC: REMOVED OBSOLETE PART NUMBERS AS PER PCN#516673	molex		
GENERAL TOLERANCES (UNLESS SPECIFIED)					
ANGULAR TOL ± °		EC NO: 850267	PRODUCT CUSTOMER DRAWING		
4 PLACES ±		DRWN: SAMPRS 2026/01/23			
3 PLACES ±		CHK'D: GGA 2026/03/13	DOCUMENT NUMBER 5046180000		
2 PLACES ±		APPR: GGA 2026/03/13			
1 PLACE ±		INITIAL REVISION:	DOC TYPE PSD	DOC PART 004	REVISION A2
0 PLACES ±		DRWN: TNISHIDA02 2017/03/29	MATERIAL NUMBER SEE CHART		
		APPR: TKUSUHARA01 2017/04/03			
DRAFT WHERE APPLICABLE MUST REMAIN WITHIN DIMENSIONS	THIRD ANGLE PROJECTION	DRAWING A3-SIZE	SERIES 504618	CUSTOMER GENERAL	SHEET NUMBER 2 OF 2



NOTES

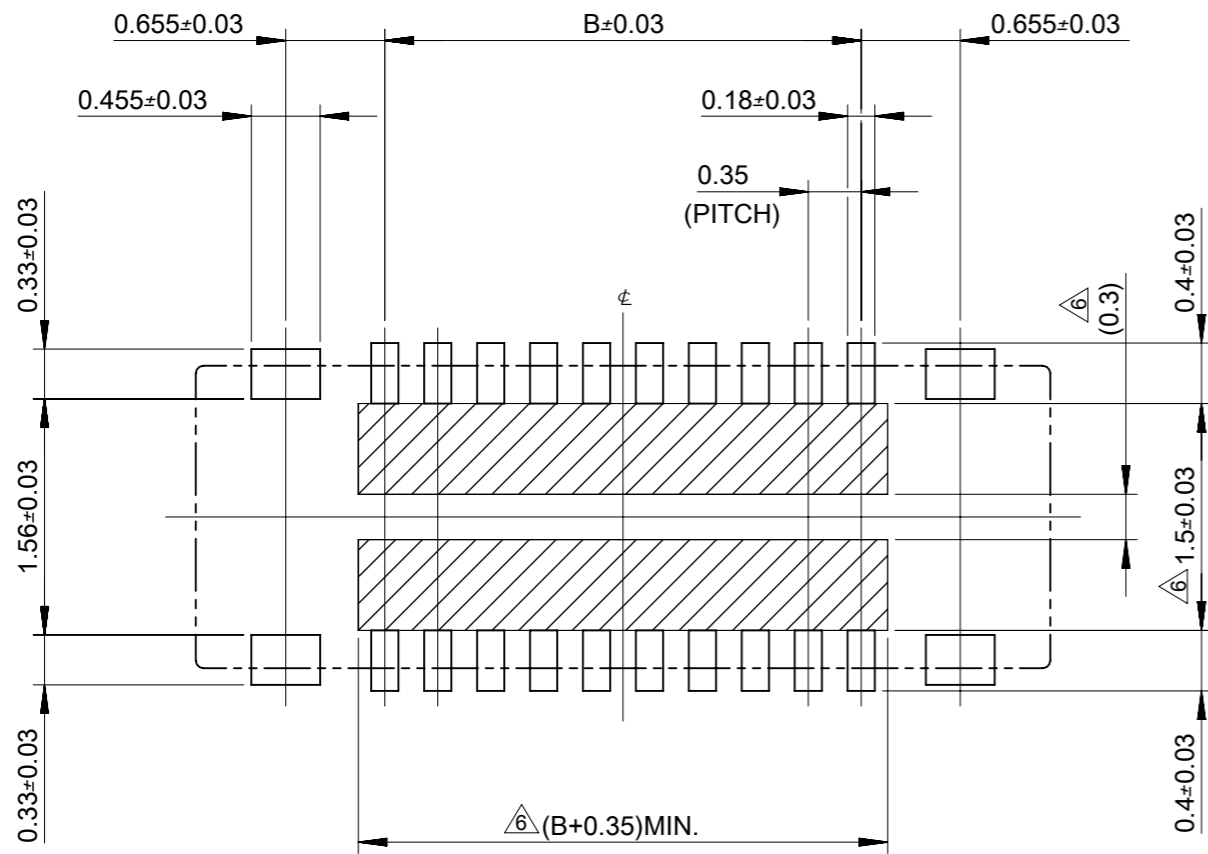
1. MATERIAL
HOUSING : LIQUID CRYSTAL POLYMER UL94V-0(COLOR : BLACK)
TERMINAL : COPPER ALLOY
FITTING NAIL : COPPER ALLOY
2. PLATING
TERMINAL
GOLD
UNDER PLATING : NICKEL
*DIVIDE INTO PARTS THE GOLD PLATING OF THE CONTACT AND THE TAIL PART BY THE NICKEL PLATING.
- FITTING NAIL
GOLD
UNDER PLATING : NICKEL
- ③ APPLY FOR (CIRCUIT/2)=EVEN.
4. MATE WITH : 504622-**12
5. TAIL AND FITTING NAIL COPLANARITY TO BE 0.08MAXIMUM.
- ⑥ PROHIBITED AREA OF PATTERN WIRING AND SOLDER.
(FOR EACH AREA, THE WIRING THAT TOUCHES ON THE SOLDER CAN BE ATTACHED, THEN COVERED WITH A FILM TO KEEP SOLDER OUT.)
7. ELECTRIC SPEC OF FITTING NAIL IS NOT GUARANTEED WHEN MATED.

3.15	5.65	504618-2012	○	---	20
B	A	EMBOSSED TAPE PACKAGE	HIGH VOL. TOOL	LOW VOL. TOOL	CIRCUIT
		ORDER NO.	SAMPLE PREPARATION ○ : TOOLED △ : WORK IN PROCESS --- : TOOLING TO BE CONFIRMED		

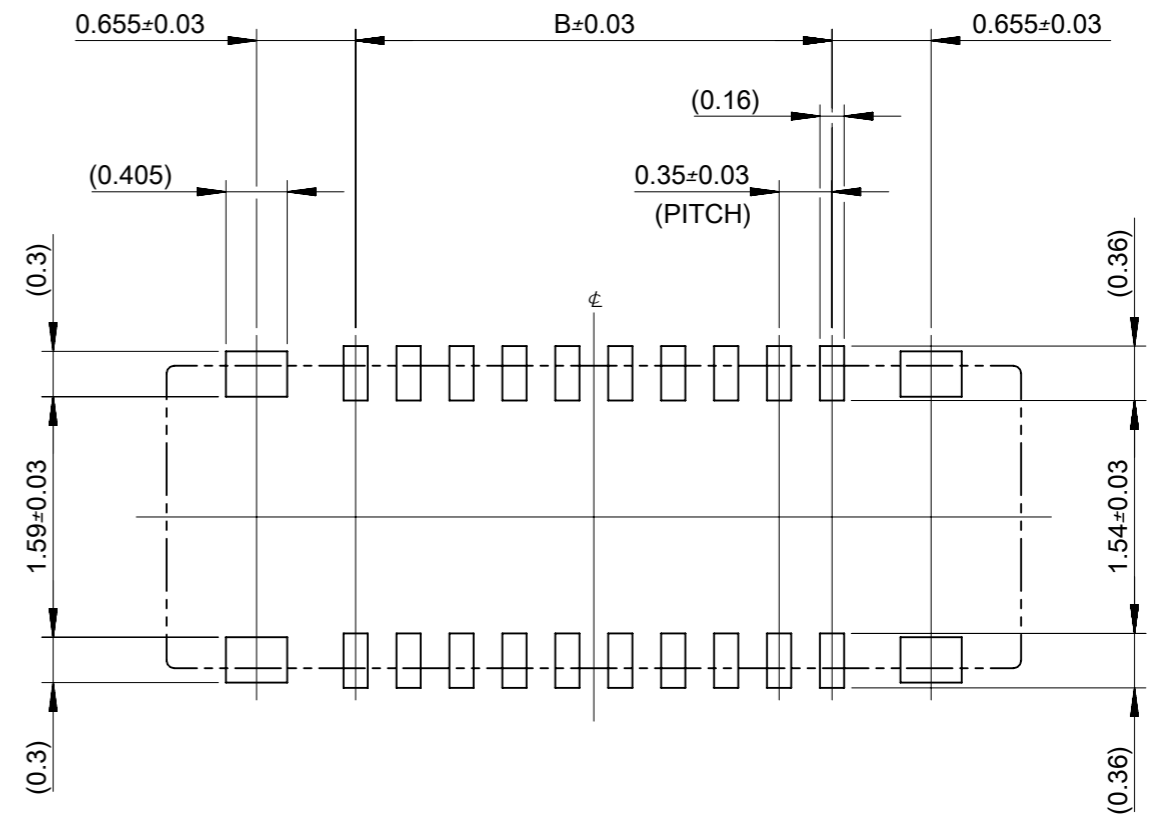
CONNECTOR SERIES No. : 504618-**09

THIS DRAWING CONTAINS INFORMATION THAT IS PROPRIETARY TO MOLEX ELECTRONIC TECHNOLOGIES, LLC AND SHOULD NOT BE USED WITHOUT WRITTEN PERMISSION					
DIMENSION UNITS	SCALE	CURRENT REV DESC: REMOVED OBSOLETE PART NUMBERS AS PER PCN#516673			
mm	20:1	<p>0.35 BB CONN. H=0.6 SSB6 REC. ASSY</p>			
GENERAL TOLERANCES (UNLESS SPECIFIED)					
ANGULAR TOL	± 1.0 °				
4 PLACES	± 0.2				
3 PLACES	± 0.2				
2 PLACES	± 0.2	EC NO: 850267	2026/01/23	PRODUCT CUSTOMER DRAWING	
1 PLACE	± 0.2	DRWN: SAMPRS	2026/03/13	INITIAL REVISION:	
0 PLACES	± 0.2	CHK'D: GGA	2026/03/13	DRWN: TNISHIDA02	
DRAFT WHERE APPLICABLE MUST REMAIN WITHIN DIMENSIONS		APPR: GGA	2026/03/13	2017/03/29	2017/04/03
THIRD ANGLE PROJECTION		DRAWING	SERIES	MATERIAL NUMBER	CUSTOMER
		A3-SIZE	504618	SEE CHART	GENERAL
DOCUMENT NUMBER		DOC TYPE	DOC PART	REVISION	
5046181000		PSD	003	A1	
SHEET NUMBER		1 OF 2			

DOCUMENT STATUS	P1	RELEASE DATE	2026/03/13	14:36:19
-----------------	----	--------------	------------	----------

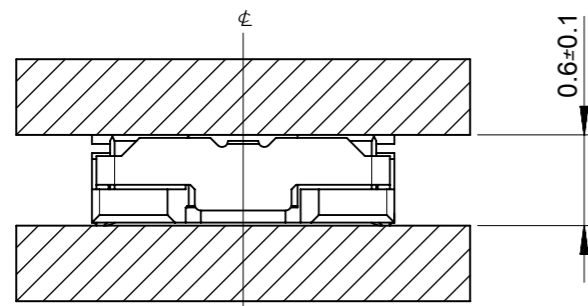


RECOMMENDED P.W.BOARD PATTERN LAYOUT(REFERENCE)


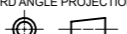


RECOMMENDED METAL MASK LAYOUT(REFERENCE)

RECOMMENDED THICKNESS OF METAL MASK : t=0.08mm
 RECOMMENDED OPEN APERTURE RATIO OF METAL MASK : 80%



MATED CONDITION

THIS DRAWING CONTAINS INFORMATION THAT IS PROPRIETARY TO MOLEX ELECTRONIC TECHNOLOGIES, LLC AND SHOULD NOT BE USED WITHOUT WRITTEN PERMISSION										
DIMENSION UNITS	SCALE	CURRENT REV DESC: REMOVED OBSOLETE PART NUMBERS AS PER PCN#516673								
mm	20:1	 0.35 BB CONN. H=0.6 SSB6 REC. ASSY								
GENERAL TOLERANCES (UNLESS SPECIFIED)										
ANGULAR TOL	± 1.0 °	PRODUCT CUSTOMER DRAWING								
4 PLACES	± 0.2	EC NO: 850267	DOCUMENT NUMBER							
3 PLACES	± 0.2	DRWN: SAMPRS	2026/01/23	5046181000					DOC TYPE	DOC PART
2 PLACES	± 0.2	CHK'D: GGA	2026/03/13	PSD					003	REVISION
1 PLACE	± 0.2	APPR: GGA	2026/03/13	A1						
0 PLACES	± 0.2	INITIAL REVISION:		MATERIAL NUMBER						CUSTOMER
DRAFT WHERE APPLICABLE MUST REMAIN WITHIN DIMENSIONS		THIRD ANGLE PROJECTION	DRAWING	SERIES	SHEET NUMBER					
			A3-SIZE	504618	2 OF 2					