

PRODUCT NUMBER
10079528-YXXXLF

EXTENDED RANGE

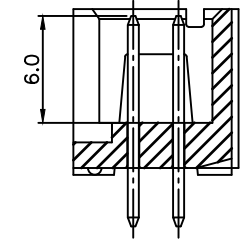
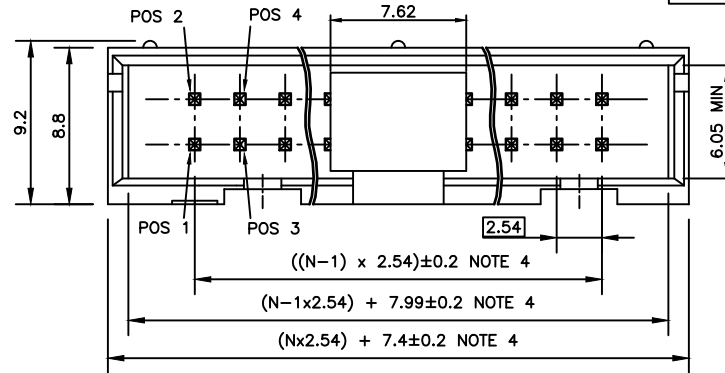
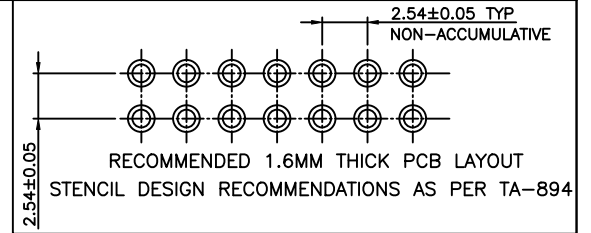
- TOOLING FEASIBILITY CONFIRMED
- SAMPLES ON DEMAND
- AVAILABILITY ON DEMAND

PLATING
(AS AVAILABLE)

- 1 - 0.76µm GOLD/GXT
(PdNi WITH GOLD FLASH) ON CONTACT AREA
2µm MIN MATTE TIN ON TAIL
1.27µm NICKEL MIN UNDERPLATING
- 3 - 0.38µm GOLD/GXT
(PdNi WITH GOLD FLASH) ON CONTACT AREA
2µm MIN MATTE TIN ON TAIL
1.27µm NICKEL MIN UNDERPLATING

- LEAD FREE, RoHS COMPATIBLE, SEE NOTE 8
- PACKAGING, SEE NOTE 5
(MAY BE SUBJECT TO TOOLING FEES)
- PIN STYLE, SEE TABLE
(AS AVAILABLE)

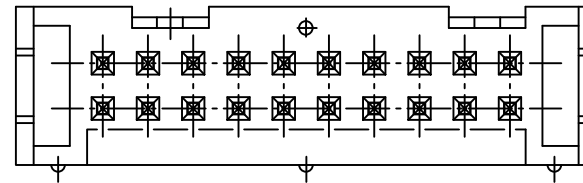
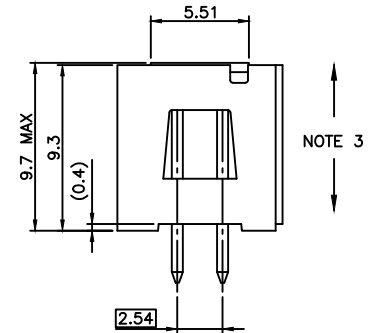
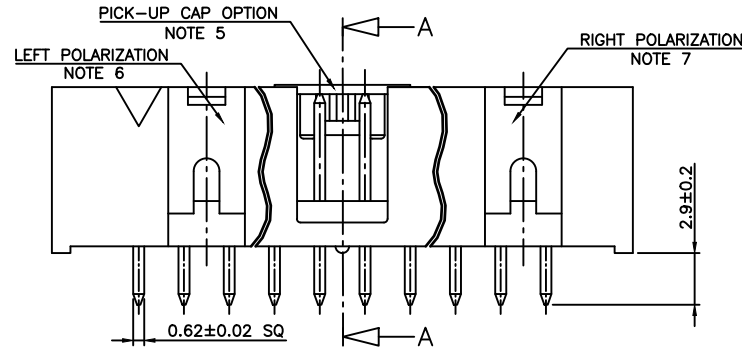
STYLE	SIZE	OMIT PINS
06	2x03	
08	2x04	
10	2x05	
11	2x05	7
14	2x07	
16	2x08	
20	2x10	
26	2x13	
30	2x15	
34	2x17	
40	2x20	
41	2x20	20



SECTION A-A
WITHOUT CAP

NOTES:

- HOUSING MATERIAL: HIGH TEMPERATURE THERMOPLASTIC, UL94 V-0 COLOR BLACK.
- CONTACT MATERIAL: COPPER ALLOY
- MINIMUM PUSH OUT FORCE OF PIN IN EITHER DIRECTION : 20N BEFORE SOLDERING.
- TO DETERMINE DIMENSIONS :
N = NUMBER OF POSITIONS PER ROW
EXAMPLE : 8 POS N x 2.54 = 20.32mm
- PACKAGING.
A = TAPE & REEL WITH PICK-UP CAP.
SEE TA-893 FOR PRODUCT AVAILABILITY.
= TUBE WITHOUT PICK-UP CAP
- NO LEFT POLARIZATION ON STYLE 06, 08, 10, 14.
- NO RIGHT POLARIZATION ON STYLE 06, 08.
- RoHS COMPLIANT & COMPATIBLE PRODUCT SPECIFICATIONS
 - PLATING:
- "LF" MEANS THE PRODUCT IS LEAD-FREE AND RoHS COMPLIANT 2µm MINIMUM MATTE TIN ON TAILS OVER 1.27µm MINIMUM NICKEL UNDERPLATE.
 - THIS PRODUCT MEETS EUROPEAN UNION DIRECTIVES AND OTHER COUNTRY REGULATIONS AS PER GS-47-0004
 - MANUFACTURING PROCESS COMPATIBILITY
- THE HOUSING WILL WITHSTAND EXPOSURE TO 260° PEAK TEMPERATURE FOR 10-30 SECONDS IN A CONVECTION INFRA-RED OR VAPOR PHASE REFLOW OVEN.
- THIS PART SERIES IS NOT INITIALLY INTENDED FOR AUTOMOTIVE APPLICATIONS. ADDITIONAL FEES ARE CHARGEABLE FOR ANY ADDITIONAL QUALIFICATION AND TEST REPORTS PERFORMED OUTSIDE THE SCOPE OF THE STANDARD PRODUCT SPECIFICATIONS.
- UNLESS OTHERWISE APPROVED BY AMPHENOL, ALL PARTS AND COMPONENTS ARE DESIGNED & BUILT ACCORDING TO AMPHENOL'S SPECIFICATIONS WHICH ARE SUBJECT TO CHANGE WITHOUT NOTICE.



mat'l. code		surface		tolerance		projection	product family	
NOTES 1, 2		ISO 1302		ISO 406 ISO 1101			QUICKIE HEADER	
ltr	ecn no	dr	date	tolerances unless otherwise specified			title	
A	F07-0257	LMU	07.09.18	angles	linear		QUICKIE HEADER	
B	F08-0146	YOV	08.04.11			scale 1:1	LOW PROFILE PIN IN PASTE 2.9	
C	B-19070	LMU	14.10.15				dwg no	
D	B-19564	BVE	14.11.27	dr	L.MULIN	07.08.21	sheet 1 of 1 size	
E	F-32955	LMU	19.03.18	engr	J.COMPAGNON	07.08.21	10079528 A3	
F	F-55025	DDE	25.03.19	chr	J.COMPAGNON	07.08.21	type CUSTOMER Drawing	
sheet index		revision sheet						