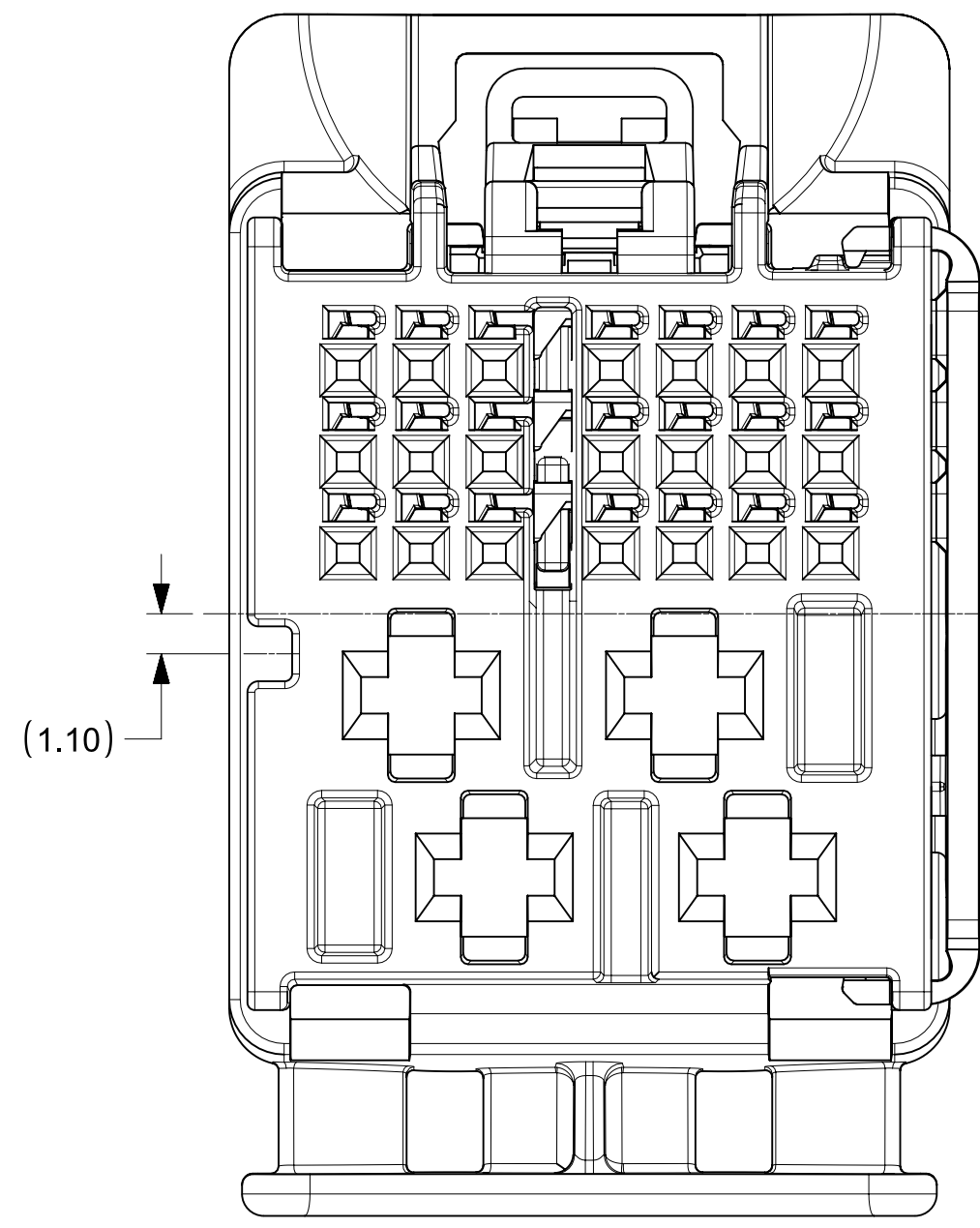
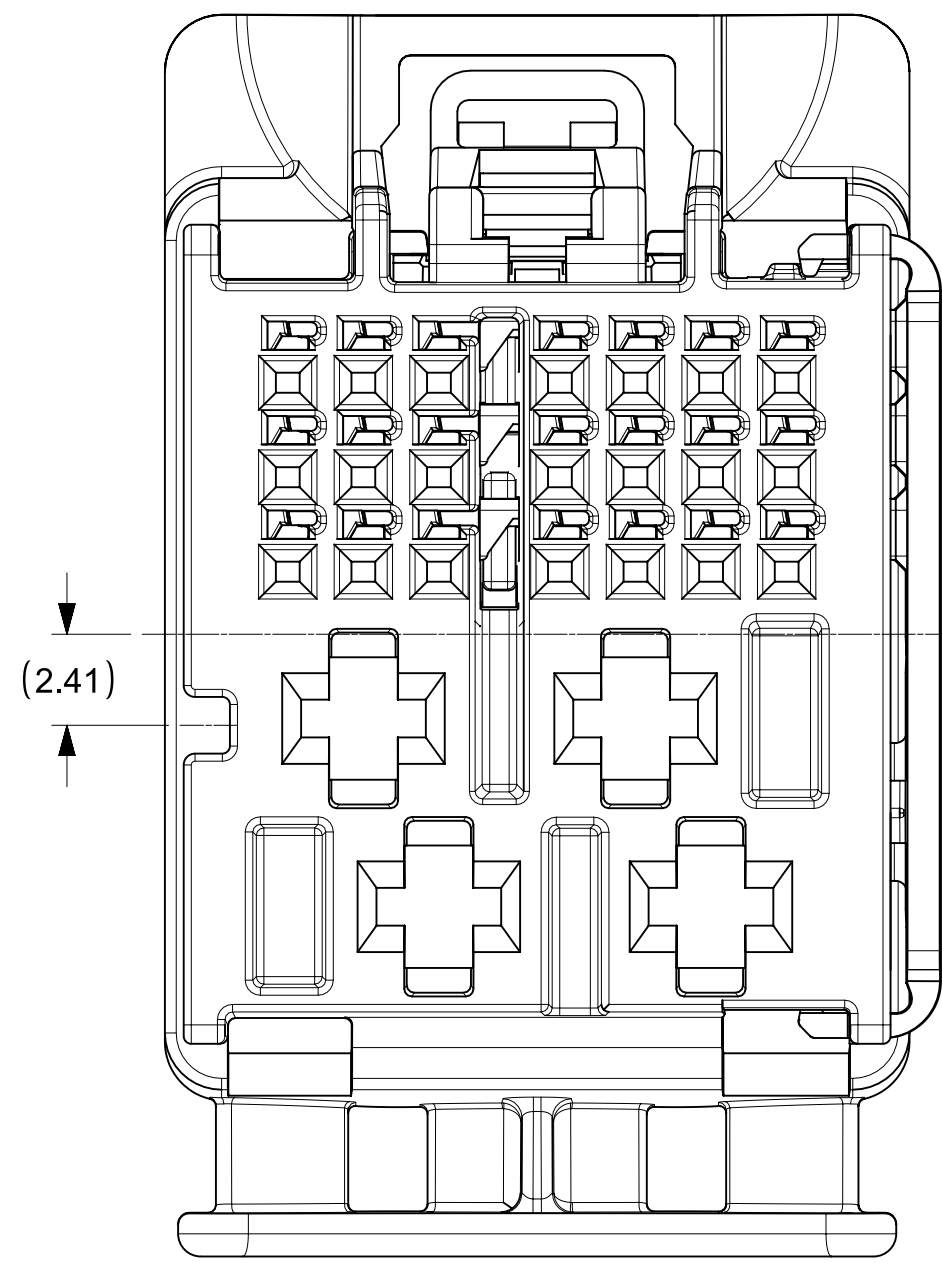


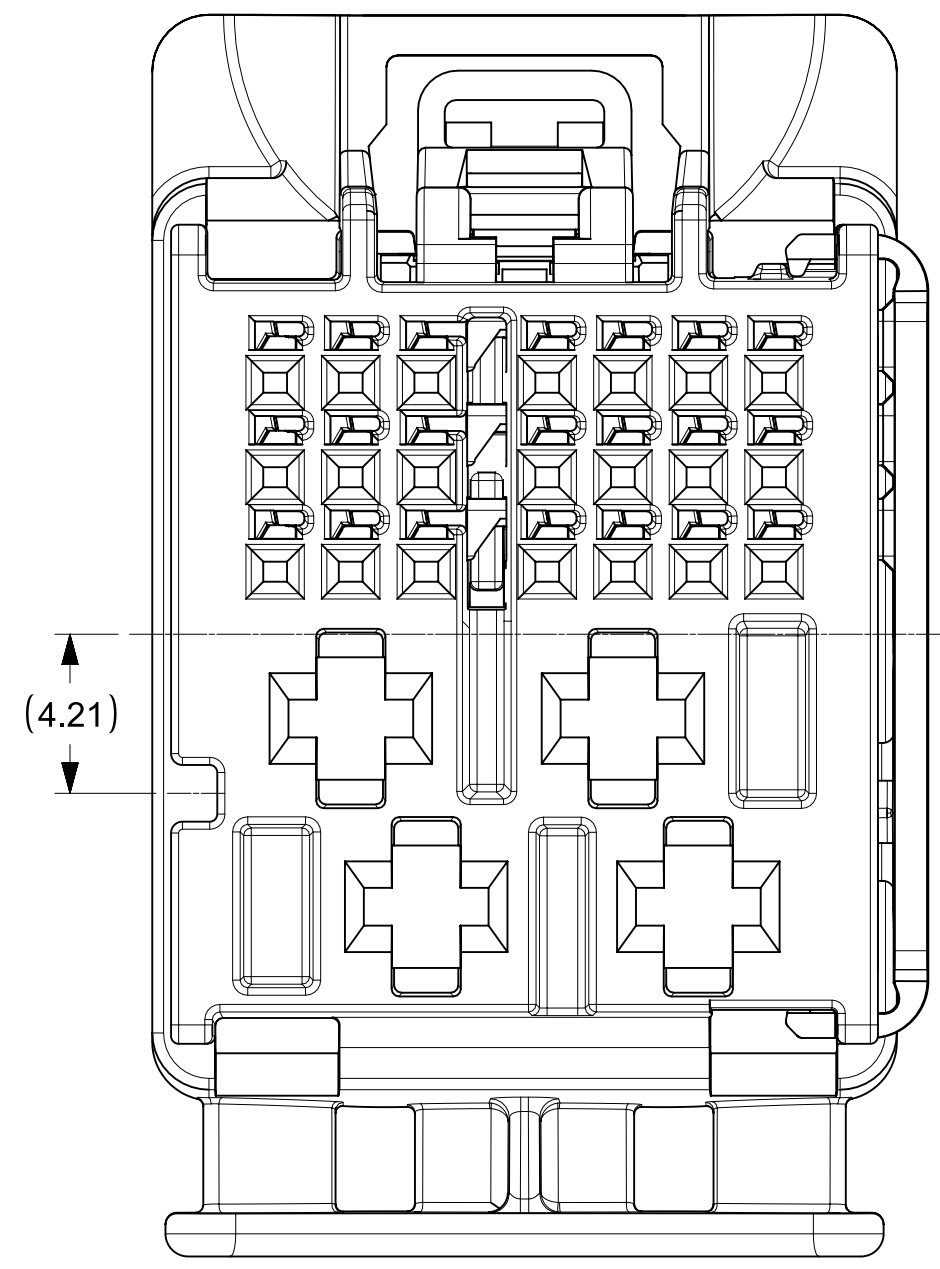
25 WAY CONNECTOR ASSEMBLY
KEY 1 & KEY 5



25 WAY CONNECTOR ASSEMBLY
KEY 2 & KEY 6



25 WAY CONNECTOR ASSEMBLY
KEY 3 & KEY 7



25 WAY CONNECTOR ASSEMBLY
KEY 4 & KEY 8

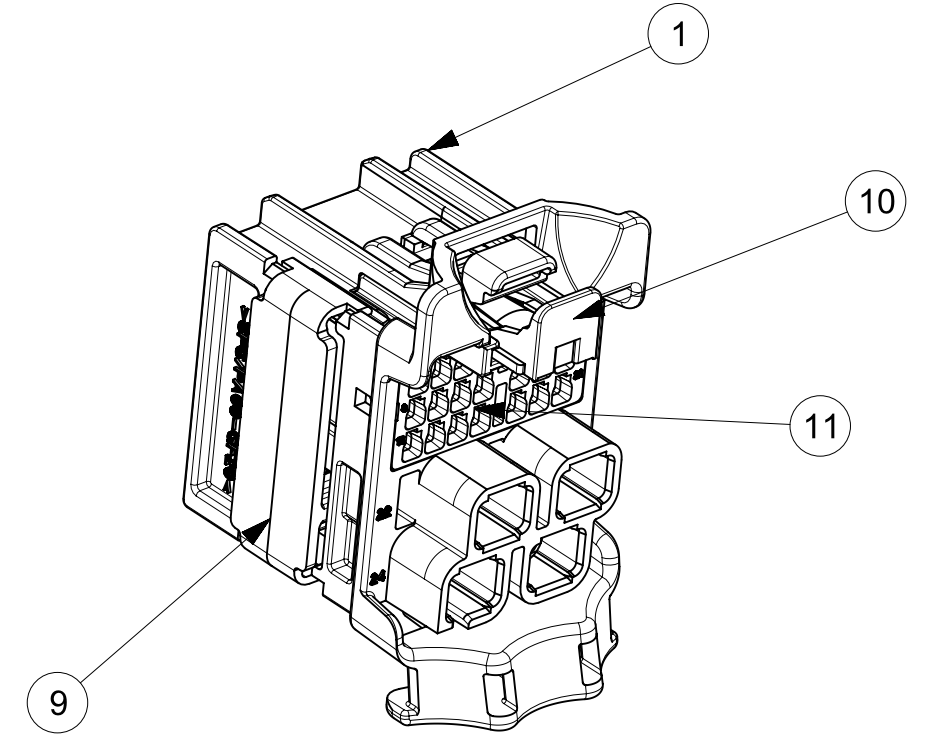
NOTES: VALID UNLESS OTHERWISE SPECIFIED

- GENERAL:
 - APPLICATION SPECIFICATION SEE: AS-160014-001
 - PRODUCT SPECIFICATION SEE: PS-160014-001
 - PACKAGING SPECIFICATION PER MOLEX DRAWING: PK-31302-266
 - PARTS MUST BE IN COMPLIANCE TO MOLEX CHEMICAL SUBSTANCES FOR PRODUCTS AND PACKAGING SPECIFICATION: ES-40000-5016
 - DATA MUST BE SUBMITTED UNDER THE MOLEX PART NUMBER TO IMDS (COMPANY ID#13255)
- DESIGN - MATERIALS:
 - SEE BOM TABLE
- DESIGN - GEOMETRY:
 - ALL GRAPHIC DATA IS BASIC (NO TOLERANCE) AND MUST BE TAKEN FROM THE DATA FILE AT ITS LATEST REVISION.
 - PRODUCT DESIGN MODEL NUMBER(S): SEE BOM TABLE
 - GEOMETRIC DIMENSIONS AND TOLERANCES PER ASME Y14.5-2009
 - EDGES AND UNDIMENSIONED DETAILS PER ISO13715
 - CORNERS SHOWN AS SHARP TO BE R 0.2 MAX.
 - MARKED TEXT TO INCLUDE RECYCLING CODE, CAVITY ID, VENDOR IDENTIFICATION AND CUSTOMER MATERIAL NUMBER.
 - LASER ETCHED DATE CODE
 - 1ST THROUGH 2ND DIGIT = CALENDAR YEAR
 - 3RD THROUGH 5TH DIGIT = "DAY #" OF YEAR
 - 6TH THROUGH 7TH DIGIT = HOUR OF DAY
 - 8TH THROUGH 9TH DIGIT = MINUTE OF HOUR
 - 10TH THROUGH 11TH DIGIT = SECOND OF MINUTE
 - LASER ETCHED ASSEMBLY LINE
 - "_X" DENOTES CAPACITY ASSEMBLY LINE SUCH AS "_2" OR MORE IN FUTURE
- DESIGN - MANUFACTURING:
 - VISUAL DEFECTS SHALL MEET COSMETIC STANDARD PS-45499-002 (Class B)

PART NUMBER	PLATING	SUPPLIER	WIRE GAGE (mm2)	TERMINAL FAMILY	WIRE SPECIFICATION
200096-3101	TIN PLATING	MOLEX	0.35	TAK FAMILY (0.5 mm)	A5 ISO 6722-1 THIN WALL INSULATION
200096-3201	TIN PLATING	MOLEX	0.13	TAK FAMILY (0.5 mm)	
2272196-2	TIN PLATING	TE	0.35	Generation 50 Locking Lance (0.5mm)	
2272196-1	TIN PLATING	TE	0.13	Generation 50 Locking Lance (0.5mm)	
1-968851-1	TIN PLATING	TE	1.0 - 2.5	AMP MCP 2.8	GMW 15626 INSULATION TYPE FLR (REGULAR THIN WALL)
1-968849-1	TIN PLATING	TE	0.5 - 1.0	AMP MCP 2.8	
15457849	TIN PLATING	DELPHI	1.5 - 2.5	CTS 2.8mm	
15457848	TIN PLATING	DELPHI	0.5 - 1.0	CTS 2.8mm	

ITEM	DESCRIPTION	COLOR	RECYCLING CODE	WEIGHT (GRAMS)	RIB OPTION	NO OF ITEMS REQUIRED																	
1	OUTER SHROUD - KEY 1	LIGHT GREEN B	SPS/PA66-GF20	4.1	A	1																	
2	OUTER SHROUD - KEY 2	STONE GRAY	SPS/PA66-GF20	4.1	A		1																
3	OUTER SHROUD - KEY 3	BLACK	SPS/PA66-GF20	4.1	A			1															
4	OUTER SHROUD - KEY 4	DARK GRAY	SPS/PA66-GF20	4.1	A				1														
5	OUTER SHROUD - KEY 5	DK PURPLE A	SPS/PA66-GF20	4.1	B					1													
6	OUTER SHROUD - KEY 6	TBD	SPS/PA66-GF20	4.1	B						1												
7	OUTER SHROUD - KEY 7	TBD	SPS/PA66-GF20	4.1	B							1											
8	OUTER SHROUD - KEY 8	LT GRAY	SPS/PA66-GF20	4.1	B									1									
9	ISL	NATURAL	SPS-GF30	0.37	N/A	1	1	1	1	1	1	1	1	1	1	1	1	1	1	1	1	1	1
10	CPA	NATURAL	PA66-GF50	0.08	N/A	1	1	1	1	1	1	1	1	1	1	1	1	1	1	1	1	1	1
11	INNER HOUSING	STONE GRAY	SPS/PA66-GF20	1.04	N/A	1	1	1	1	1	1	1	1	1	1	1	1	1	1	1	1	1	1
12	INNER HOUSING	STONE GRAY	SPS/PA66-GF20	1.04	N/A	1	1	1	1	1	1	1	1	1	1	1	1	1	1	1	1	1	1

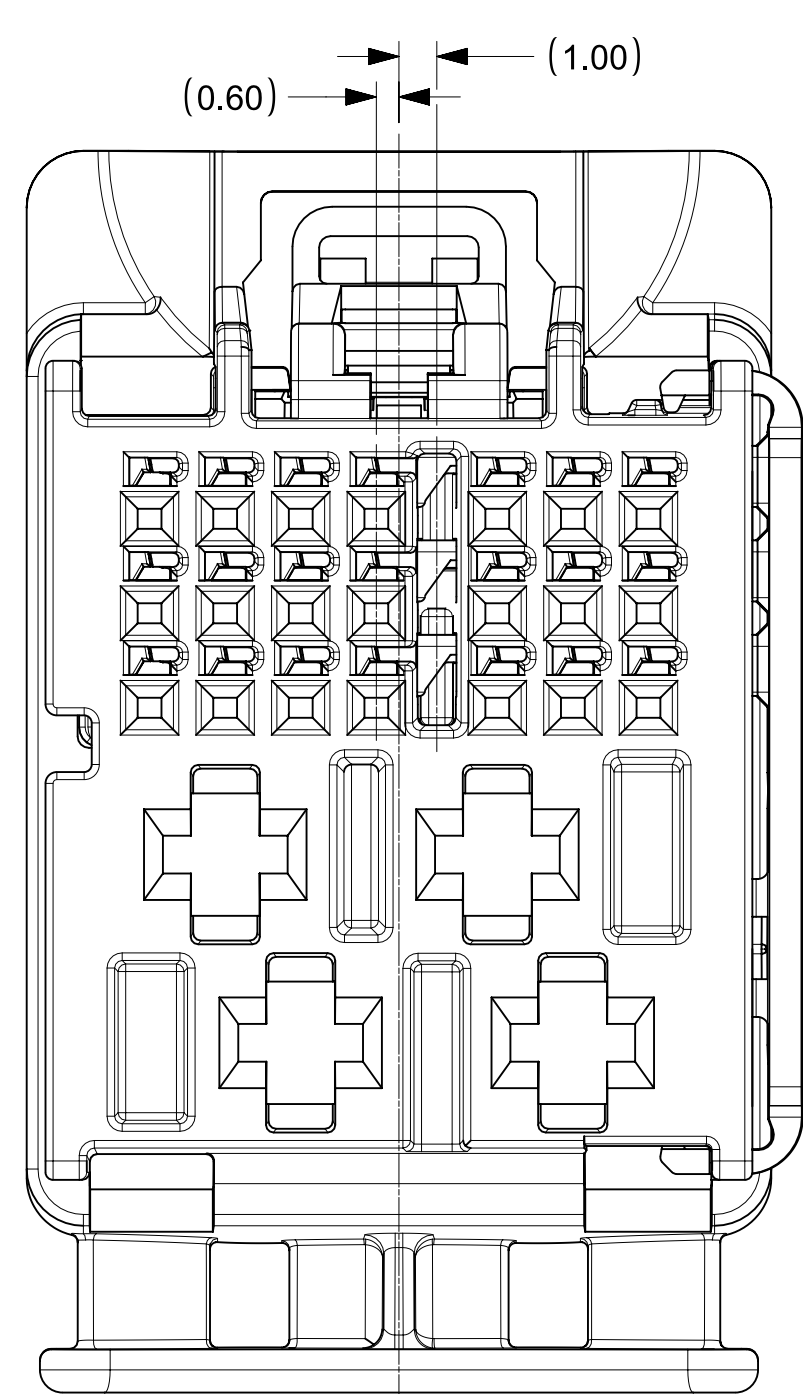
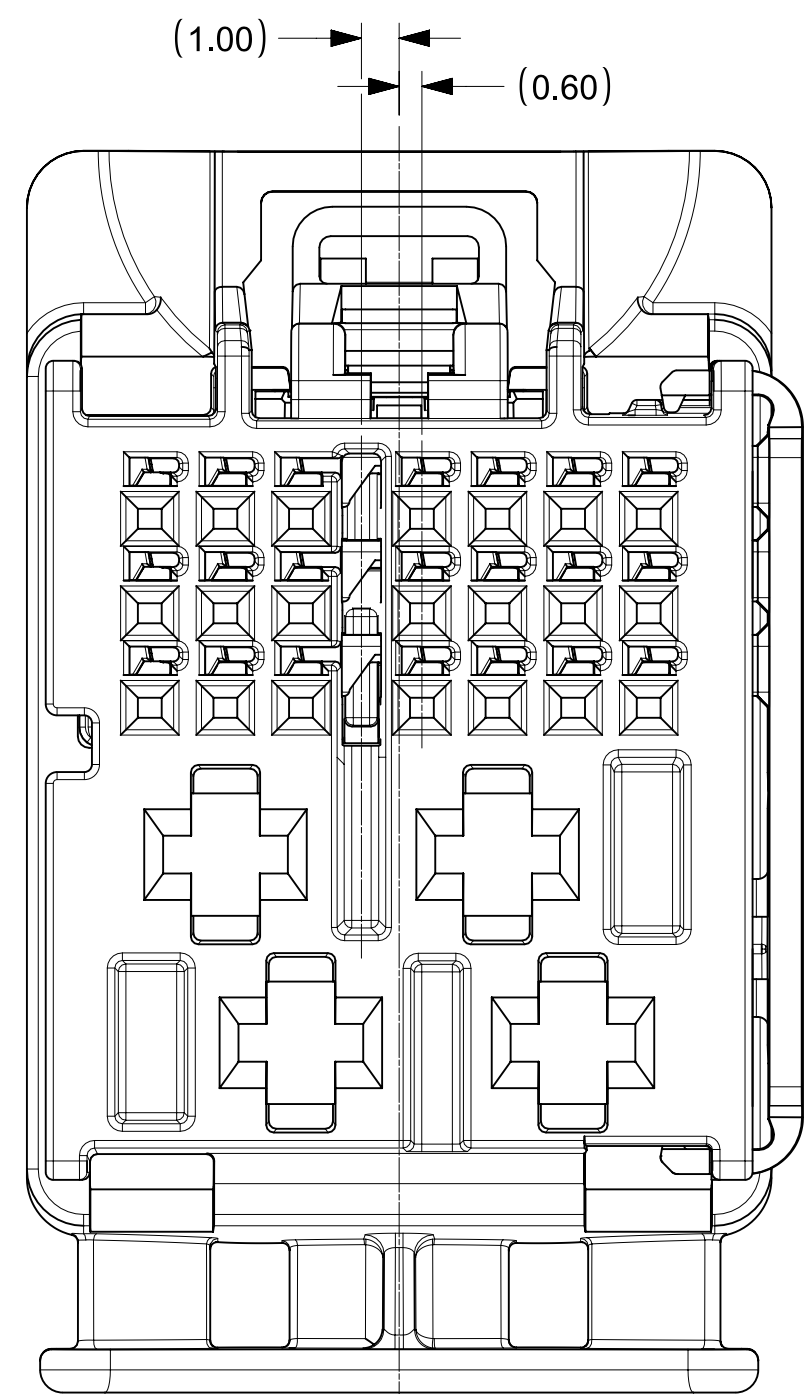
MOLEX ASSEMBLY PART NO.'S	
1600270011	KEY 1
1600270012	KEY 2
1600270013	KEY 3
1600270014	KEY 4
1600270015	KEY 5
1600270016	KEY 6
1600270017	KEY 7
1600270018	KEY 8



SCALE 2:1

RIB OPTION A

RIB OPTION B



INSPECTION BALLOON NUMBER LOG	
PER DRAWING REVISION:	A5
LAST BALLOON NUMBER:	2
ADDED BALLOON NUMBER:	NONE
DELETED BALLOON NUMBER:	NONE

FUNCTIONAL SYMBOLS FA = 0 FE = 0 FP = 0	THIS DRAWING CONTAINS INFORMATION THAT IS PROPRIETARY TO MOLEX ELECTRONIC TECHNOLOGIES, LLC AND SHOULD NOT BE USED WITHOUT WRITTEN PERMISSION	SCALE: 5:1	CURRENT REV DESC: Updated TE 2.8 terminal configuration
	DIMENSION UNITS: mm	GENERAL TOLERANCES (UNLESS SPECIFIED): ANGULAR TOL ± 3.0°	PHASE: CO NO: DRWN: Yann Chen 2025-09-03 CHK'D: Kenneth Dai 2026-05-15 APPR: Ringo Hu 2026-05-15
DIVISIONAL SYMBOLS	4 PLACES ± 3 PLACES ± 2 PLACES ± 0.300 1 PLACE ± 0.30 0 PLACES ± 0.30	DRAFT WHERE APPLICABLE MUST REMAIN WITHIN DIMENSIONS	INITIAL REVISION: DRWN: RCARLSON 2026-05-15 APPR: Ringo Hu
THIRD ANGLE PROJECTION		DRAWING: D-SIZE 160027	SERIES: 160027
MATERIAL NUMBER: 1600270011		CUSTOMER: GENERAL MARKET	SHEET NUMBER: 1 OF 2

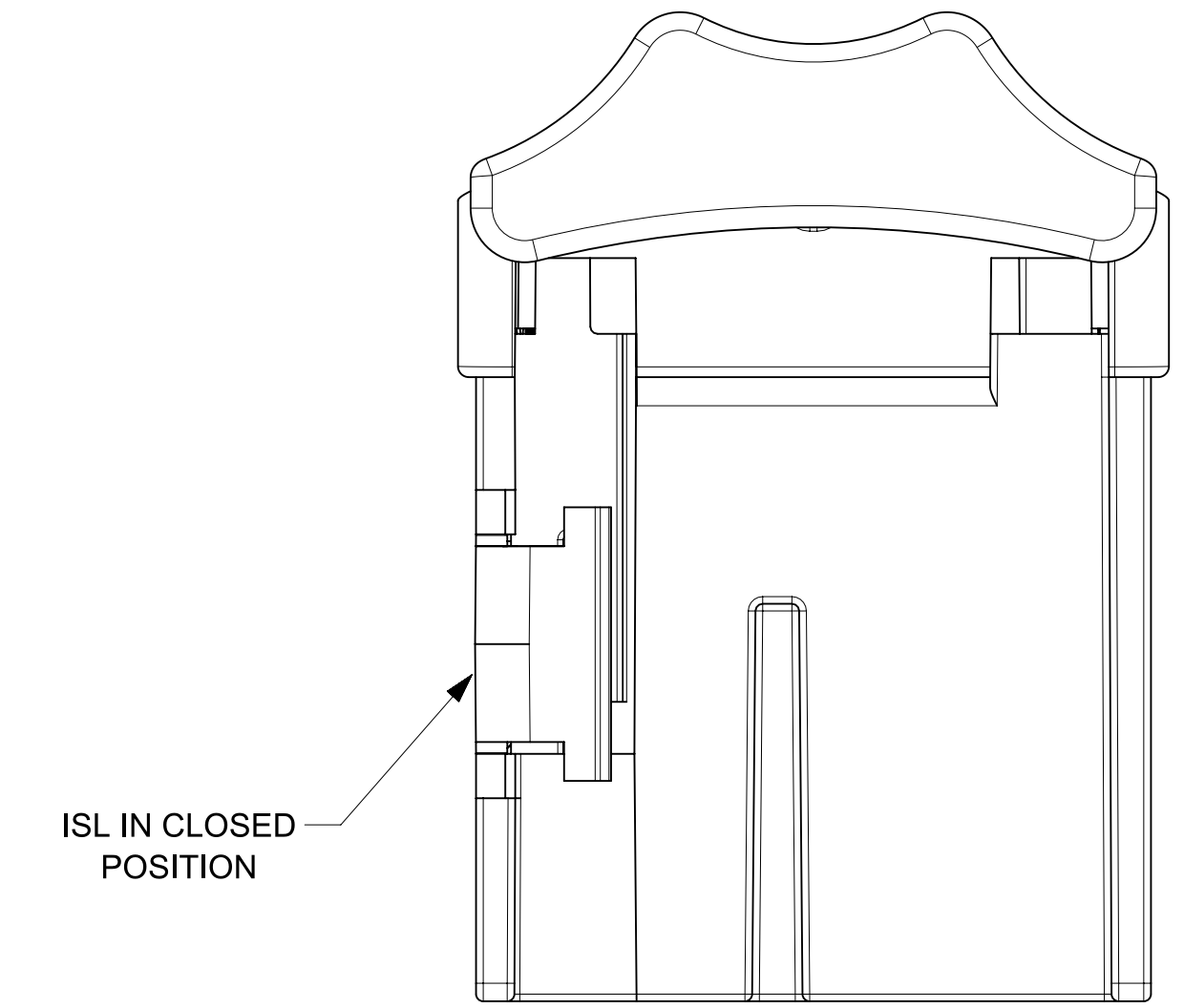
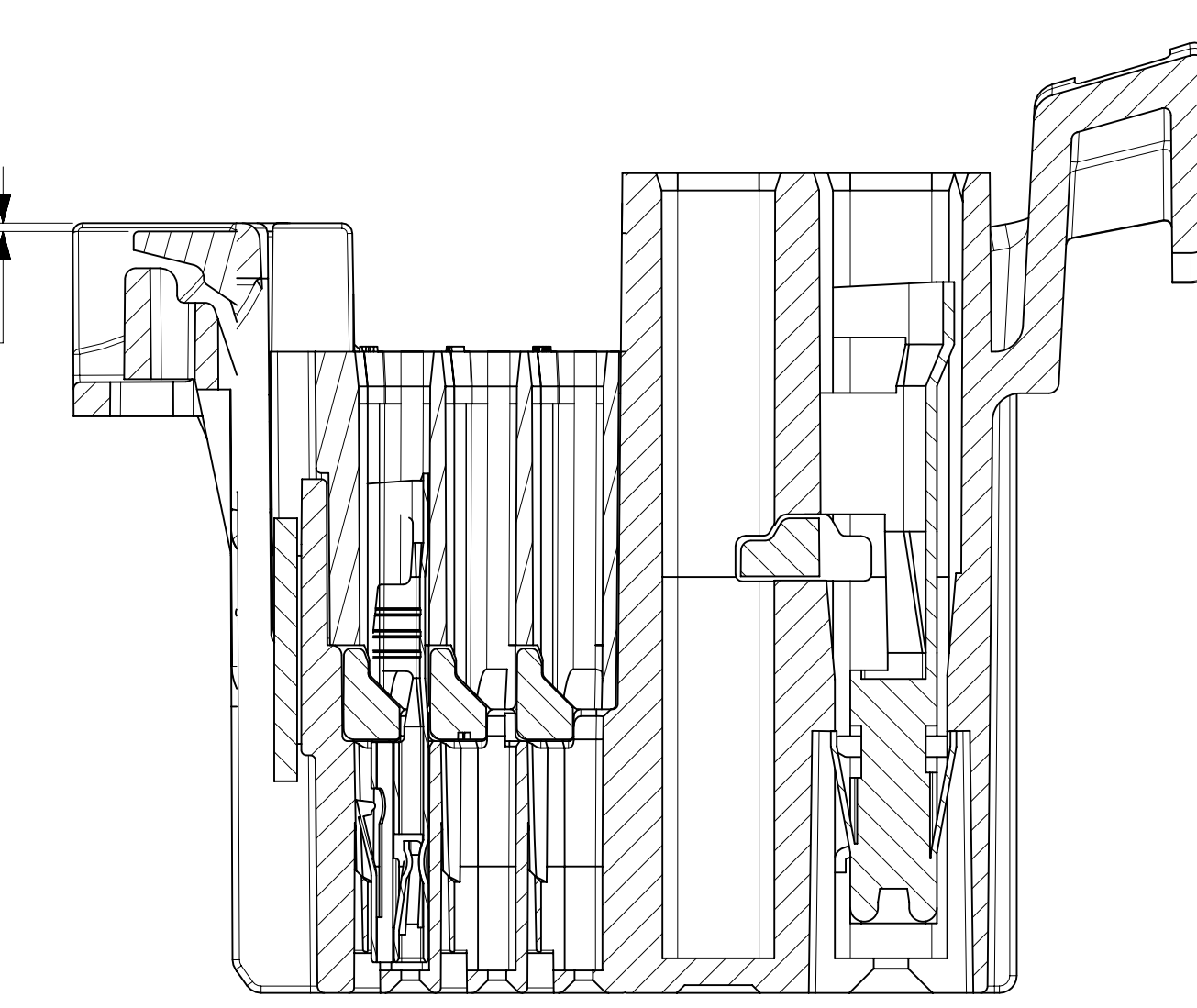
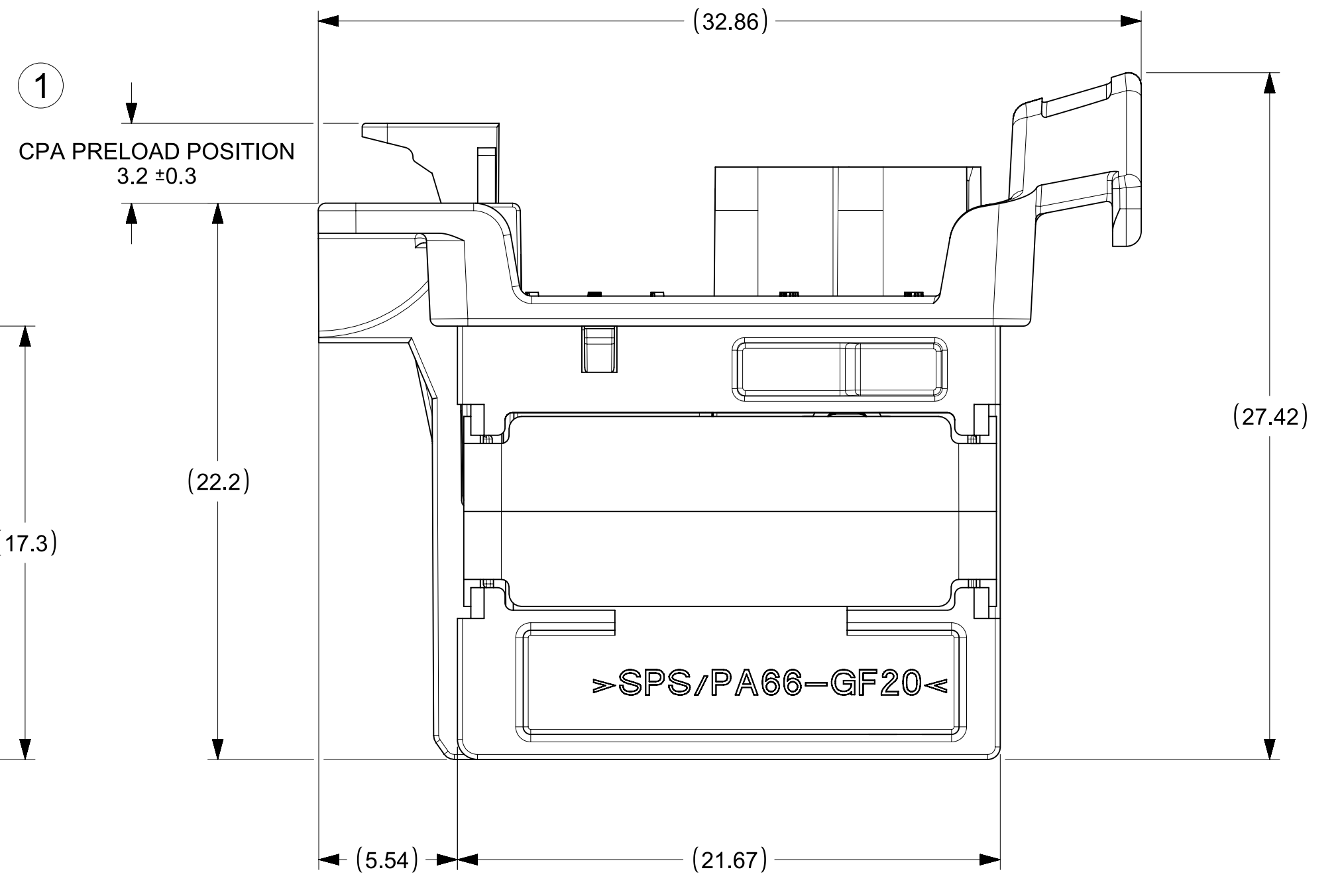
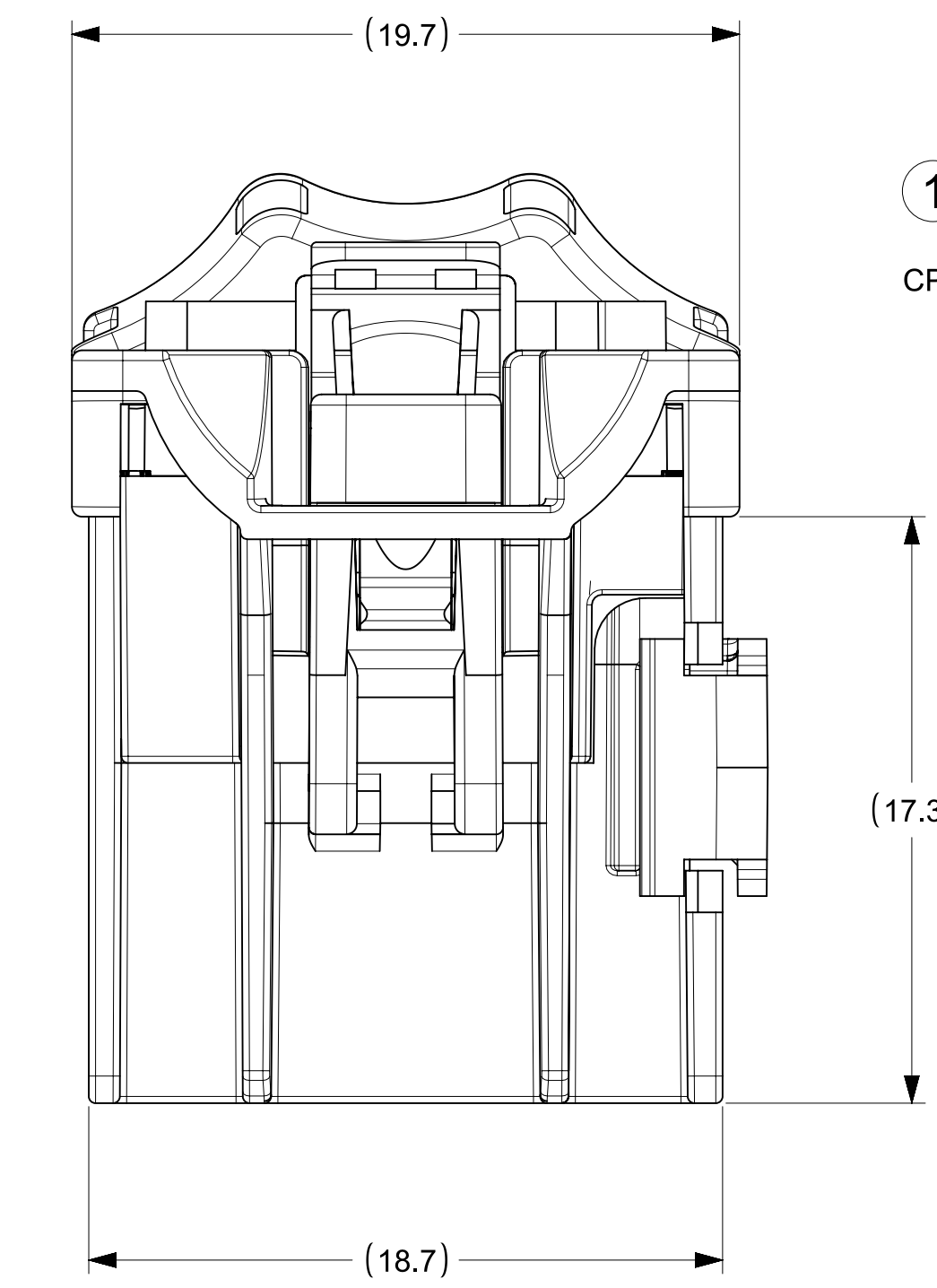
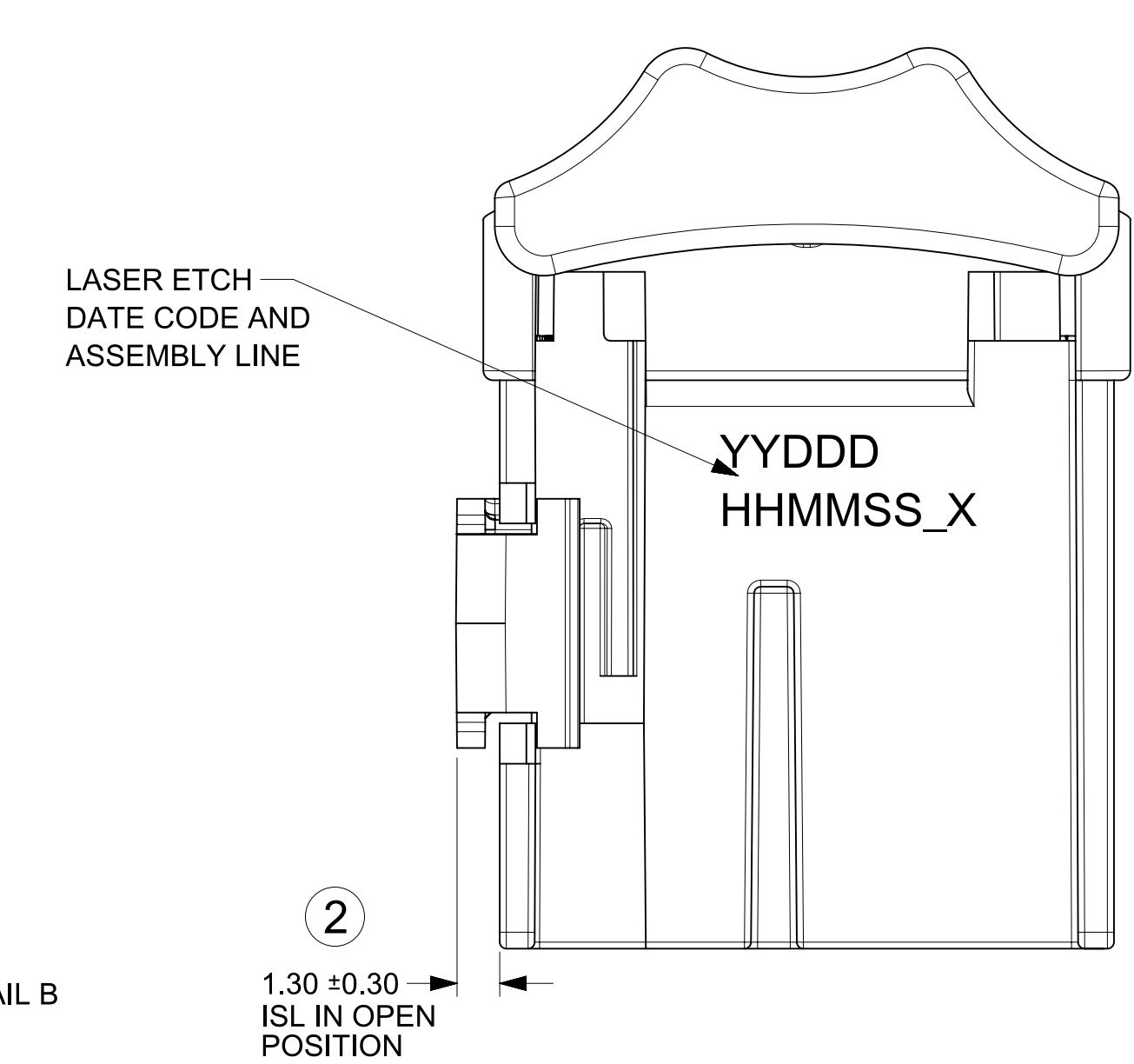
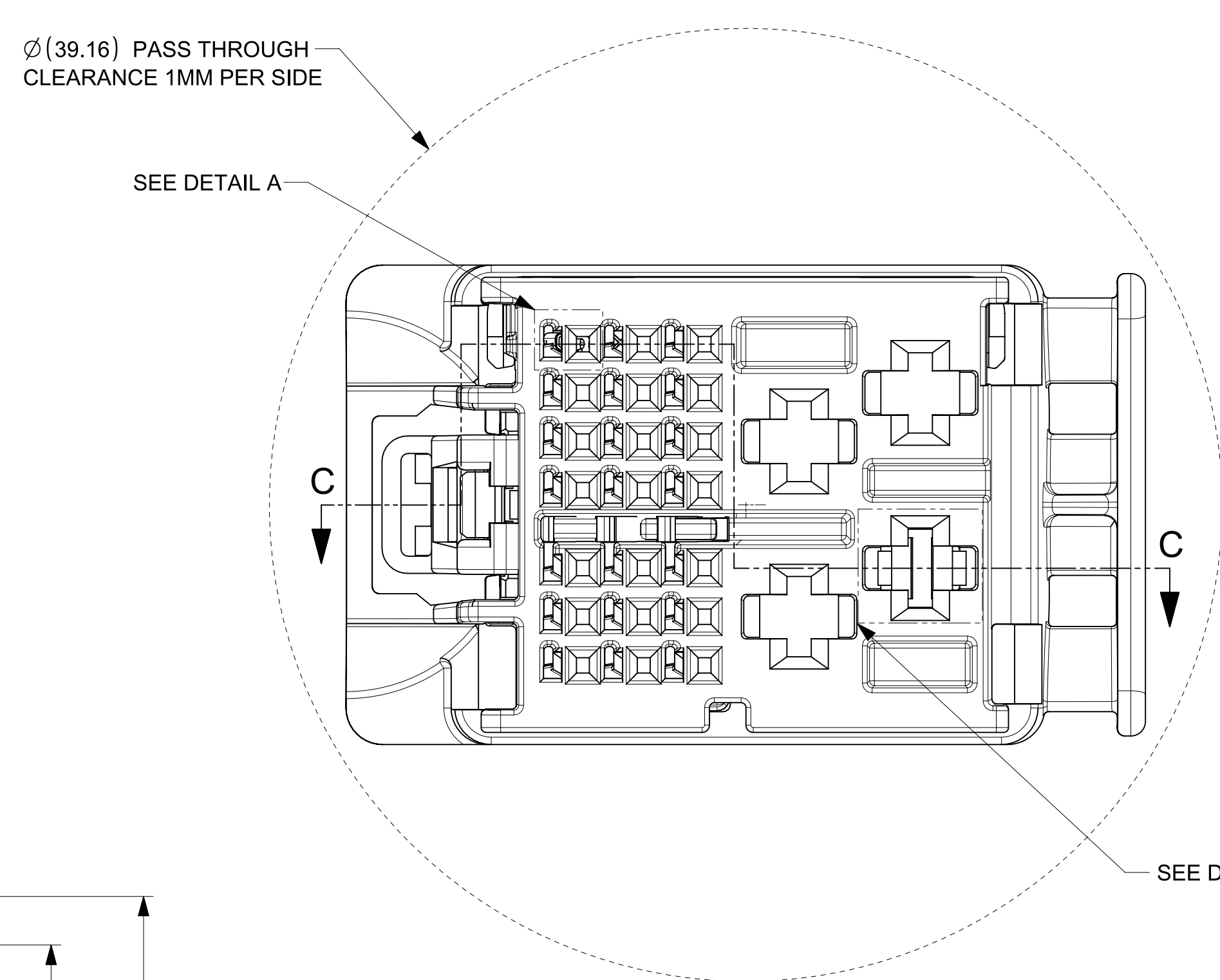
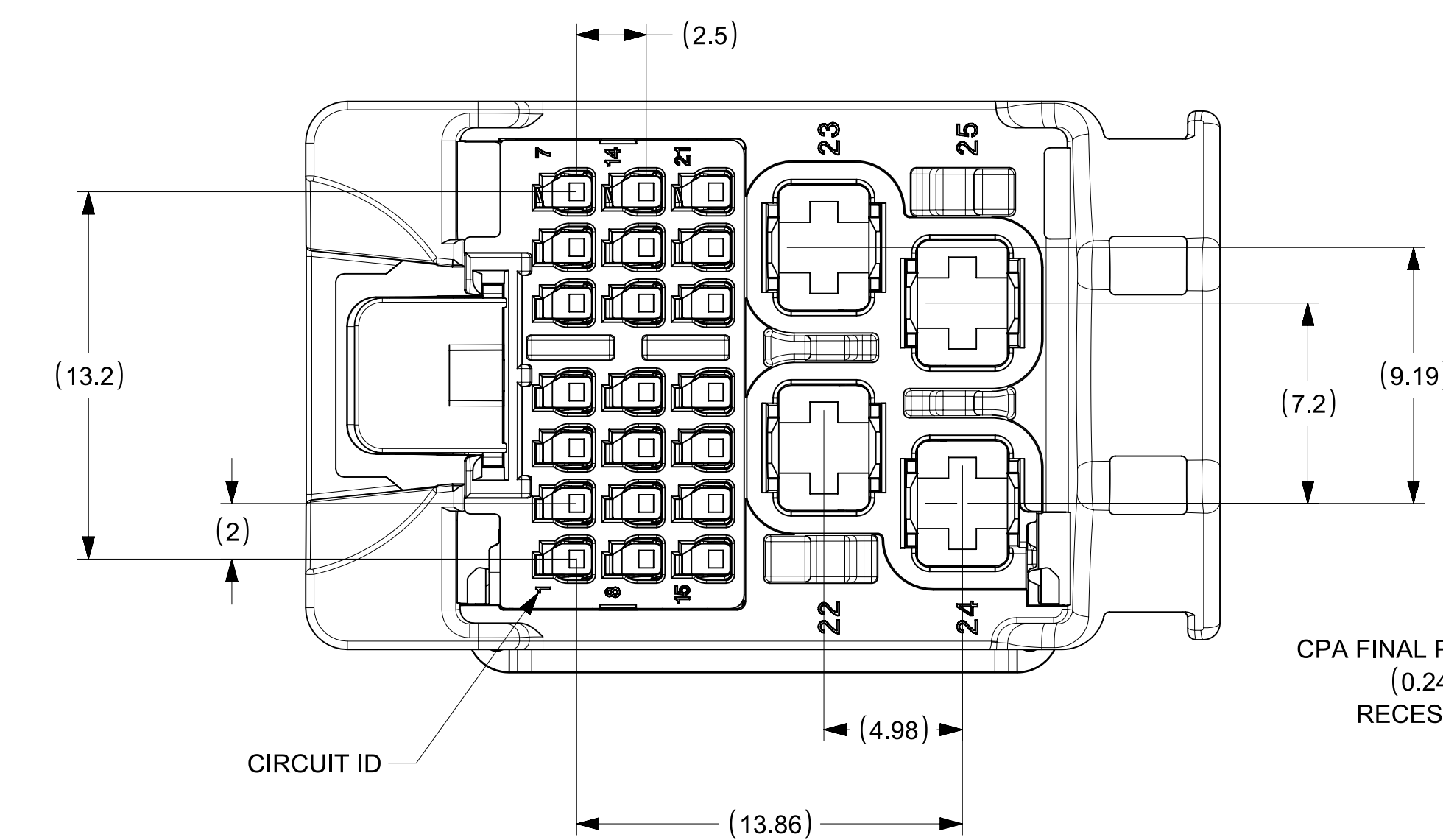
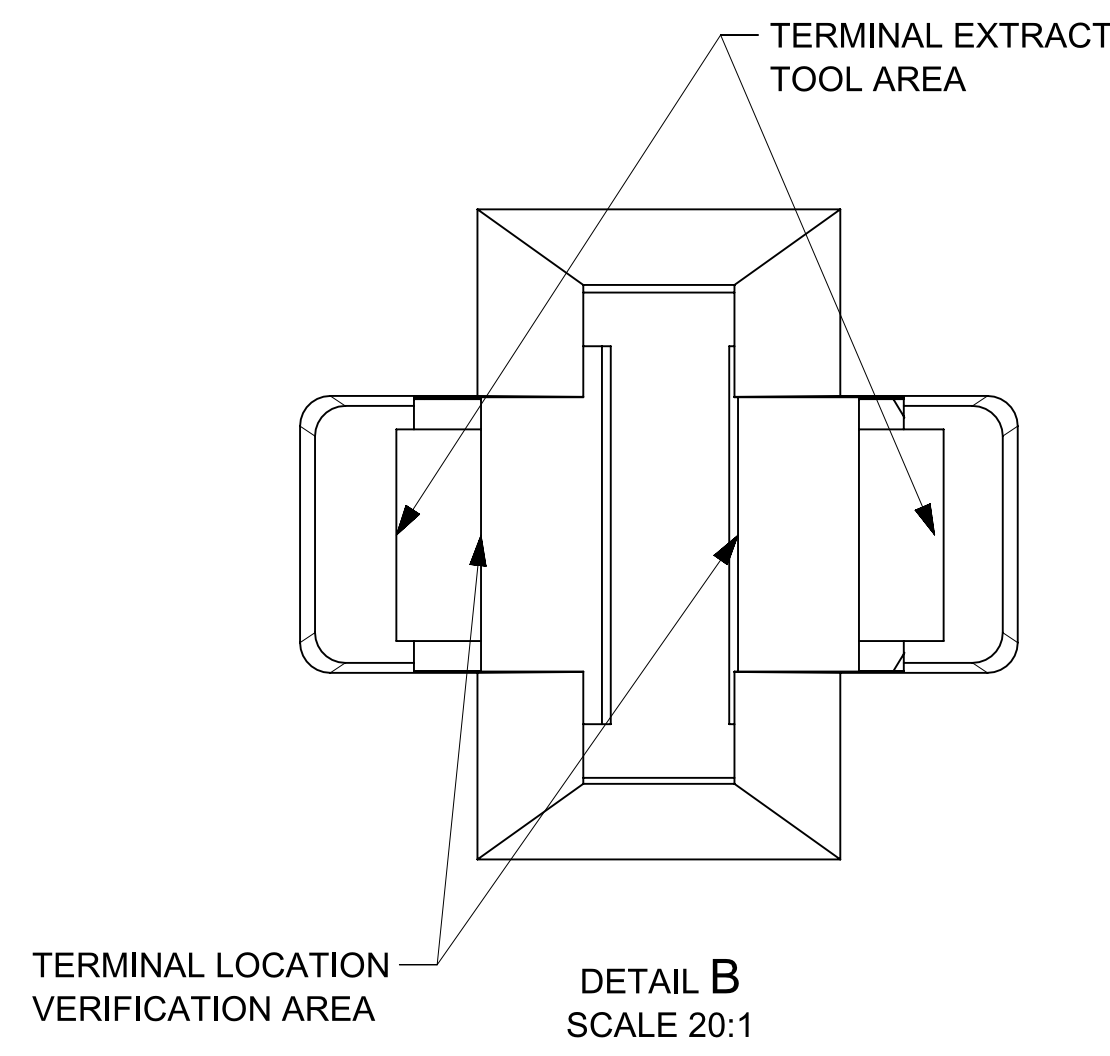
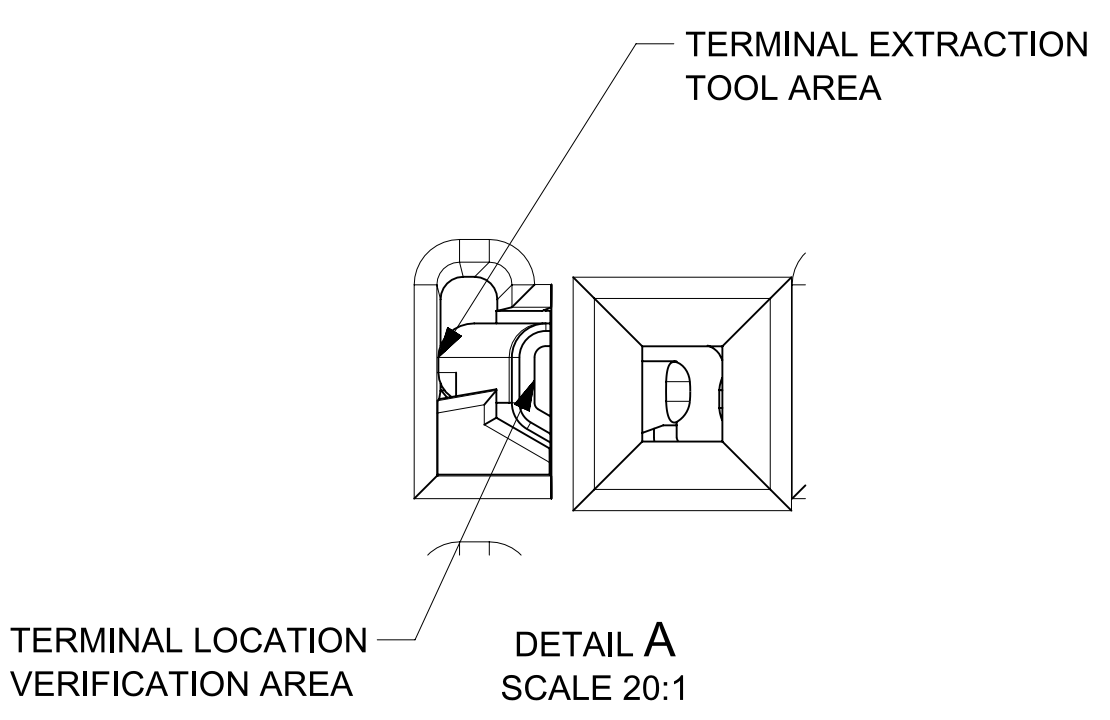
REVISION	DESCRIPTION
A5	UPDATED WIRE SPECIFICATION
A4	UPDATED LASER MARK TO INCLUDE NEW CAPACITY ASSEMBLY LINE
A3	UPDATED TAK50 TERMINAL PNS 21-July-2021 YPENG47 ECN 648438

molex

25WAY STAK50H HYBRID ASSEMBLY
CONNECTOR ASSEMBLY

PRODUCT CUSTOMER DRAWING

DOCUMENT NUMBER: 1600270011 DOC TYPE: PSD DOC PART: 000 REVISION: A5



FUNCTIONAL SYMBOLS	THIS DRAWING CONTAINS INFORMATION THAT IS PROPRIETARY TO MOLEX ELECTRONIC TECHNOLOGIES, LLC AND SHOULD NOT BE USED WITHOUT WRITTEN PERMISSION		CURRENT REV DESC: Updated TE 2.8 terminal configuration	
	DIMENSION UNITS	SCALE		
FA = 0	mm	5:1		
FC = 0	GENERAL TOLERANCES (UNLESS SPECIFIED)		PHASE:	
FD = 0	ANGULAR TOL ± 3.0°		CO NO:	
DIVISIONAL SYMBOLS	4 PLACES	±	DRWN: Yann Chen	2025-09-03
	3 PLACES	±	CHK'D: Kenneth Dai	2026-05-15
	2 PLACES	± 0.300	APPR: Ringo Hu	2026-05-15
	1 PLACE	± 0.30	INITIAL REVISION:	
	0 PLACES	± 0.30	DRWN: RCARLSON	2026-05-15
DRAFT WHERE APPLICABLE MUST REMAIN WITHIN DIMENSIONS		THIRD ANGLE PROJECTION	DRAWING	SERIES
			D-SIZE	160027
		MATERIAL NUMBER		CUSTOMER
		1600270011		GENERAL MARKET
		DOC TYPE	DOC PART	REVISION
		PSD	000	A5
		SHEET NUMBER		
		2 OF 2		

molex

25WAY STAK50H HYBRID ASSEMBLY
CONNECTOR ASSEMBLY

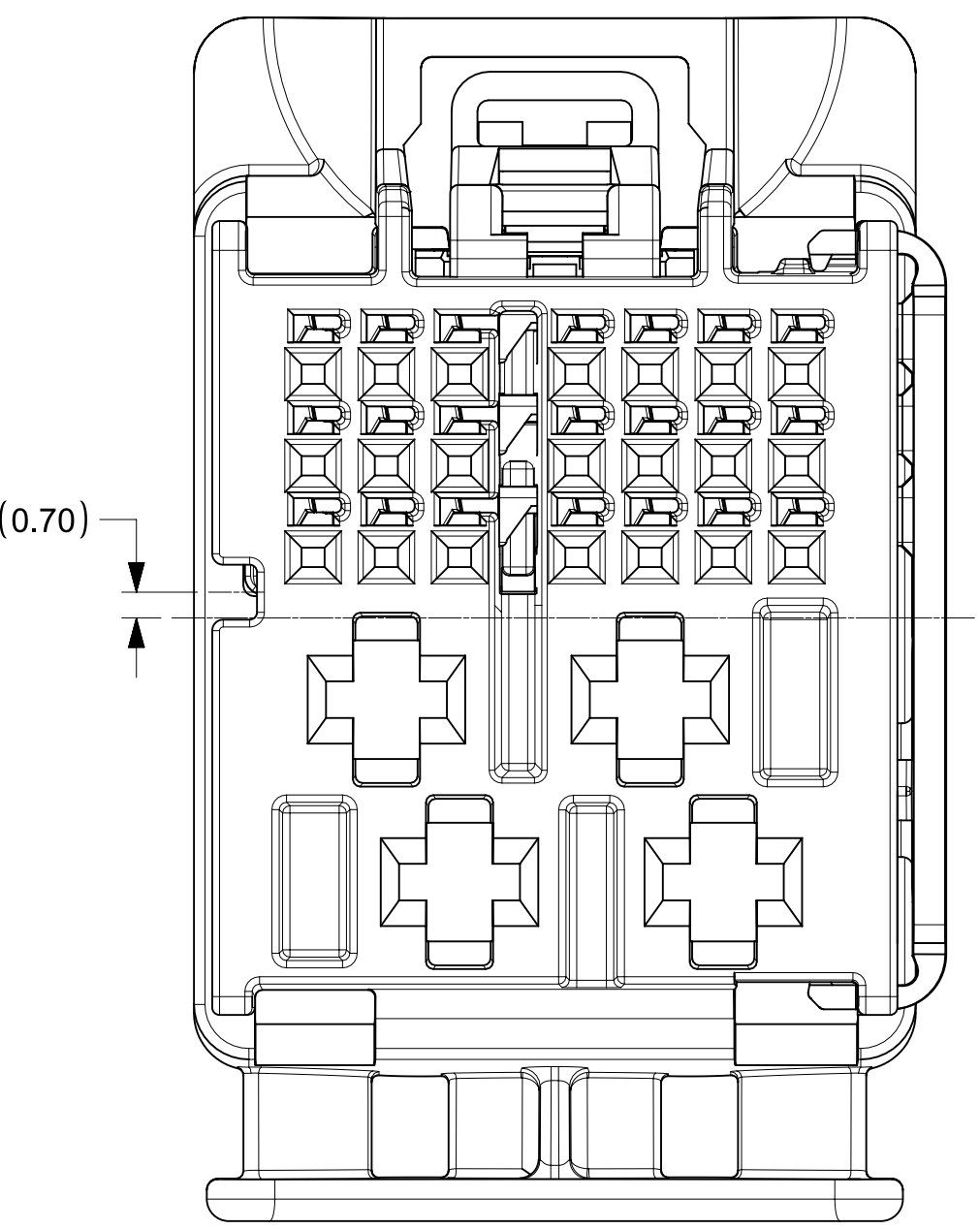
PRODUCT CUSTOMER DRAWING

DOCUMENT NUMBER: 1600270011
DOC TYPE: PSD
DOC PART: 000
REVISION: A5

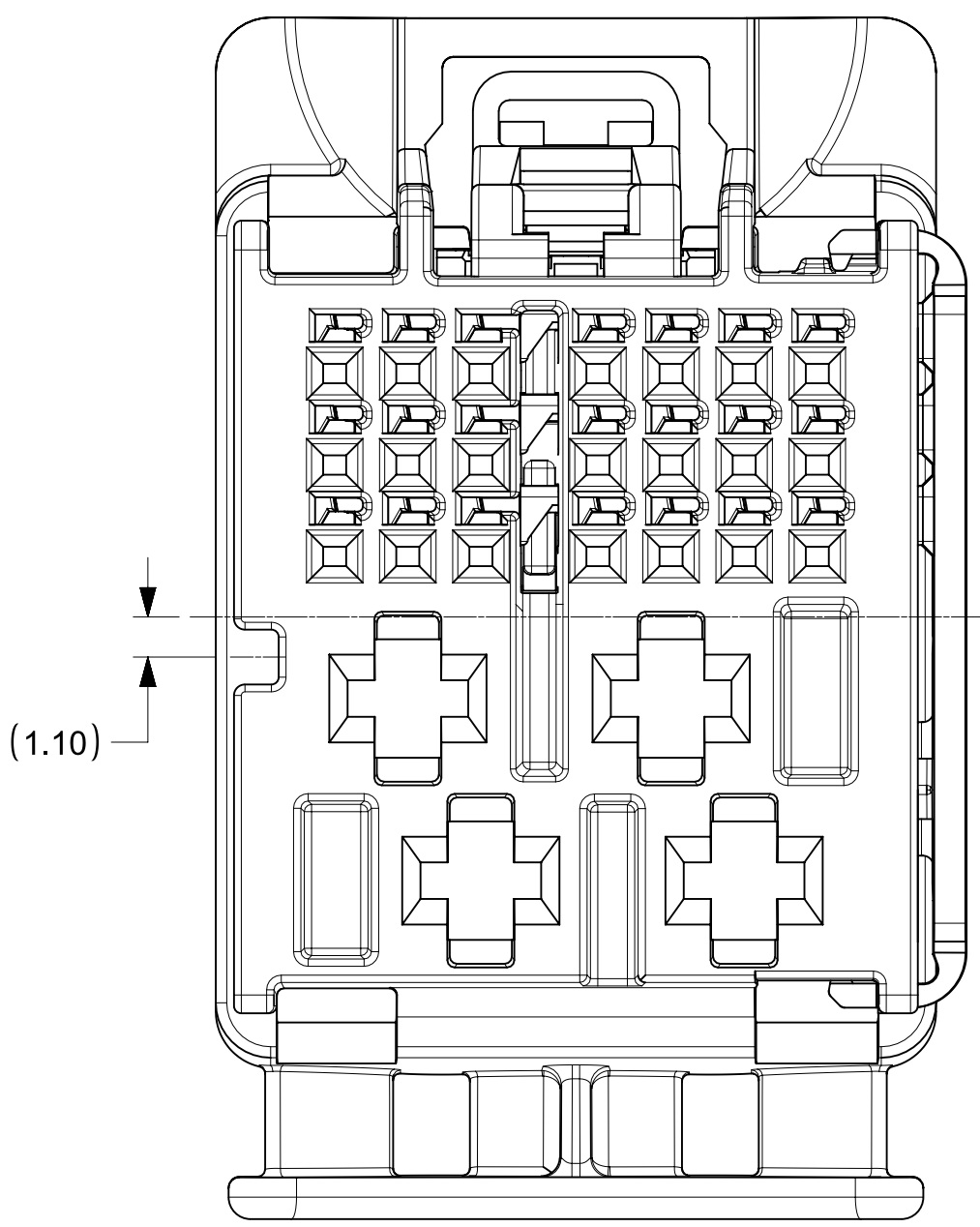
MATERIAL NUMBER: 160027
CUSTOMER: GENERAL MARKET
SHEET NUMBER: 2 OF 2

TABLE OF CONTENTS	
SHEET NO.	SHEET DESCRIPTION
1	NOTES AND TABLE OF CONTENTS
2	BILL OF MATERIALS
3	DIMENSIONS

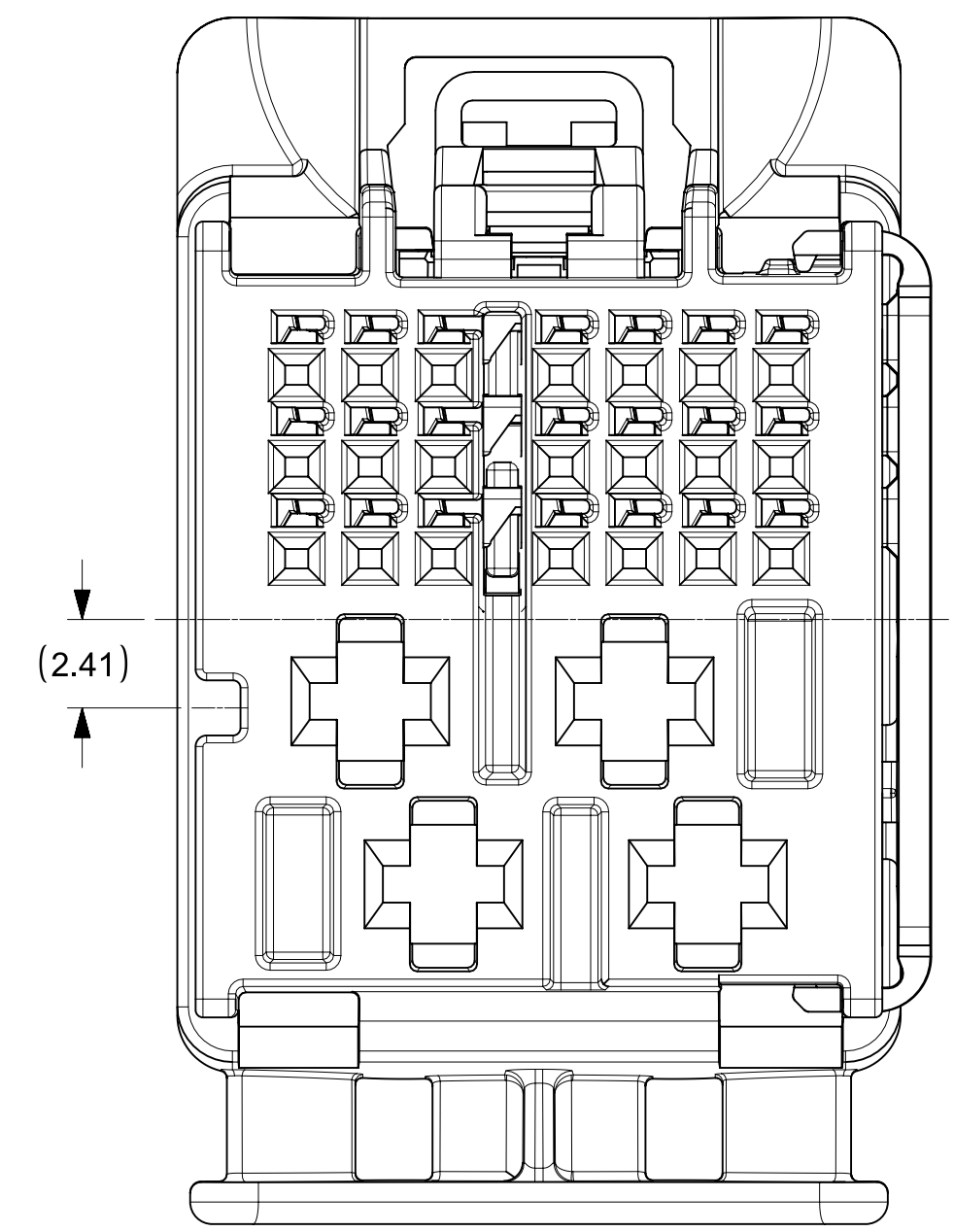
- NOTES: VALID UNLESS OTHERWISE SPECIFIED
- GENERAL:
 - APPLICATION SPECIFICATION SEE: AS-160014-001
 - PRODUCT SPECIFICATION SEE: PS-160014-001
 - PACKAGING SPECIFICATION PER MOLEX DRAWING: PK-31302-266
 - PARTS MUST BE IN COMPLIANCE TO MOLEX CHEMICAL SUBSTANCES FOR PRODUCTS AND PACKAGING SPECIFICATION: ES-40000-5016
 - DATA MUST BE SUBMITTED UNDER THE MOLEX PART NUMBER TO IMDS (COMPANY ID#13255)
 - DESIGN - MATERIALS:
 - SEE BOM TABLE
 - DESIGN - GEOMETRY:
 - ALL GRAPHIC DATA IS BASIC (NO TOLERANCE) AND MUST BE TAKEN FROM THE DATA FILE AT ITS LATEST REVISION.
 - PRODUCT DESIGN MODEL NUMBER(S): SEE BOM TABLE
 - GEOMETRIC DIMENSIONS AND TOLERANCES PER ASME Y14.5-2009
 - EDGES AND UNDIMENSIONED DETAILS PER ISO13715
 - CORNERS SHOWN AS SHARP TO BE R 0.2 MAX.
 - MARKED TEXT TO INCLUDE RECYCLING CODE, CAVITY ID, VENDOR IDENTIFICATION AND CUSTOMER MATERIAL NUMBER.
 - LASER ETCHED DATE CODE
 1ST THROUGH 2ND DIGIT = CALENDAR YEAR
 3RD THROUGH 5TH DIGIT = "DAY #" OF YEAR
 6TH THROUGH 7TH DIGIT = HOUR OF DAY
 8TH THROUGH 9TH DIGIT = MINUTE OF HOUR
 10TH THROUGH 11TH DIGIT = SECOND OF MINUTE
 - LASER ETCHED ASSEMBLY LINE
 "X" DENOTES CAPACITY ASSEMBLY LINE SUCH AS ".2" OR MORE IN FUTURE
 - DESIGN - MANUFACTURING:
 - VISUAL DEFECTS SHALL MEET COSMETIC STANDARD PS-45499-002 (Class B)



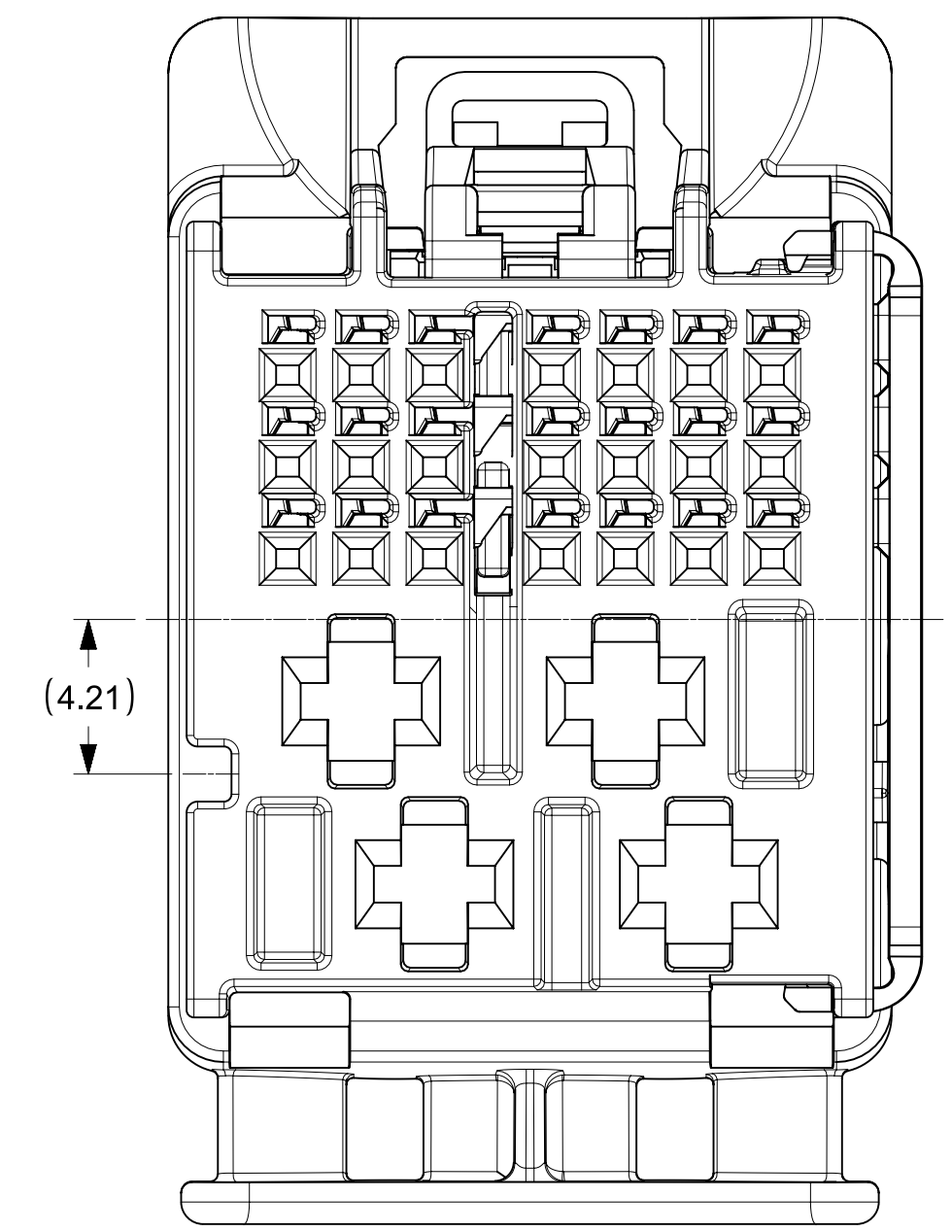
25 WAY CONNECTOR ASSEMBLY
KEY 1 & KEY 5



25 WAY CONNECTOR ASSEMBLY
KEY 2 & KEY 6

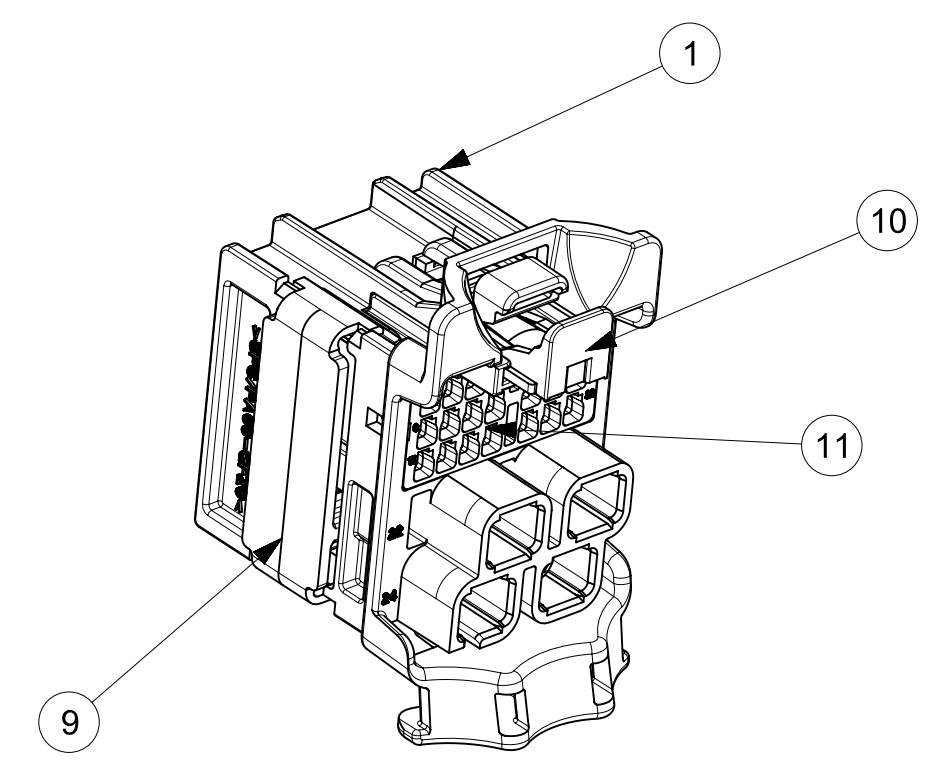


25 WAY CONNECTOR ASSEMBLY
KEY 3 & KEY 7



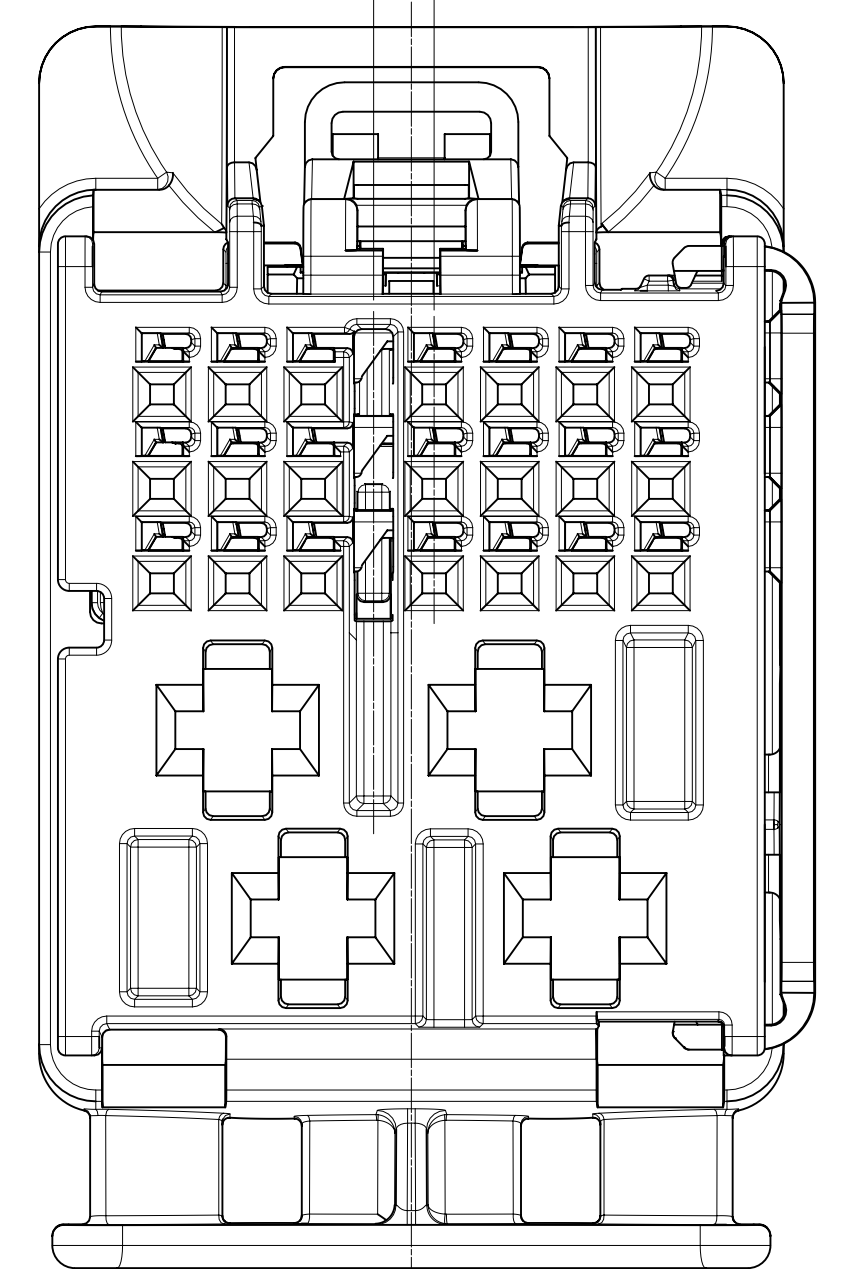
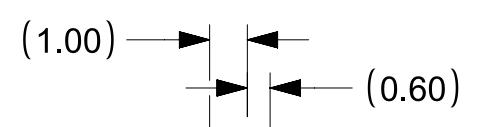
25 WAY CONNECTOR ASSEMBLY
KEY 4 & KEY 8

PART NUMBER	PLATING	SUPPLIER	WIRE GAGE (mm2)	TERMINAL FAMILY	WIRE SPECIFICATION
200096-3101	TIN PLATING	MOLEX	0.35	TAK FAMILY (0.5 mm)	ISO 6722-1 THIN WALL INSULATION
200096-3201	TIN PLATING	MOLEX	0.13	TAK FAMILY (0.5 mm)	
2272196-2	TIN PLATING	TE	0.35	Generation 50 Locking Lance (0.5mm)	
2272196-1	TIN PLATING	TE	0.13	Generation 50 Locking Lance (0.5mm)	
1-968851-1	TIN PLATING	TE	1.5 - 2.5	AMP MCP 2.8	GMW 15626 INSULATION TYPE FLR (REGULAR THIN WALL)
1-968849-1	TIN PLATING	TE	0.5 - 1.0	AMP MCP 2.8	
15457849	TIN PLATING	DELPHI	1.5 - 2.5	CTS 2.8mm	
15457848	TIN PLATING	DELPHI	0.5 - 1.0	CTS 2.8mm	

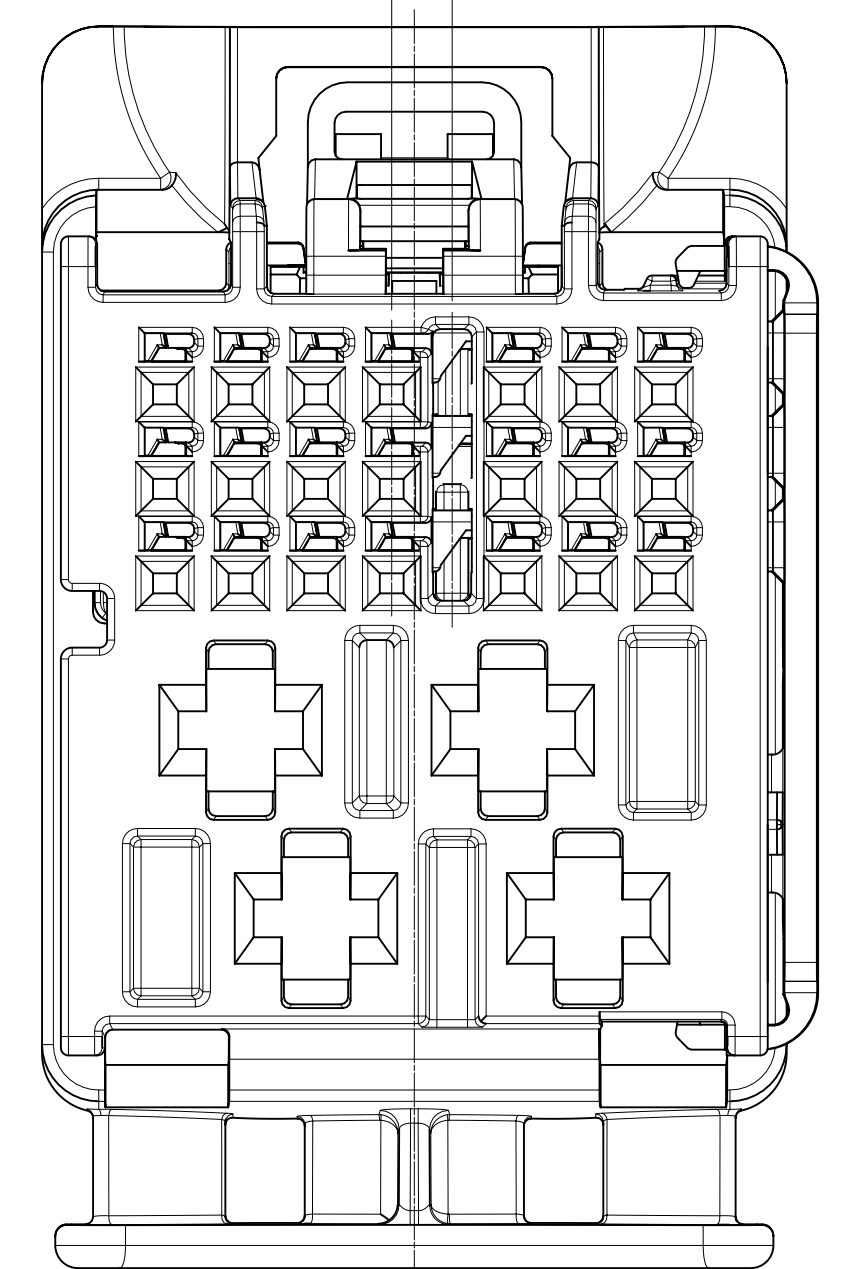
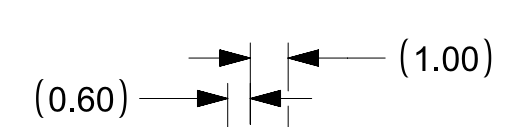


SCALE 2:1

RIB OPTION A



RIB OPTION B



INSPECTION BALLOON NUMBER LOG	
PER DRAWING REVISION:	A
LAST BALLOON NUMBER:	2
ADDED BALLOON NUMBER:	NONE
DELETED BALLOON NUMBER:	NONE

REVISION	DESCRIPTION
A	INITIAL RELEASE

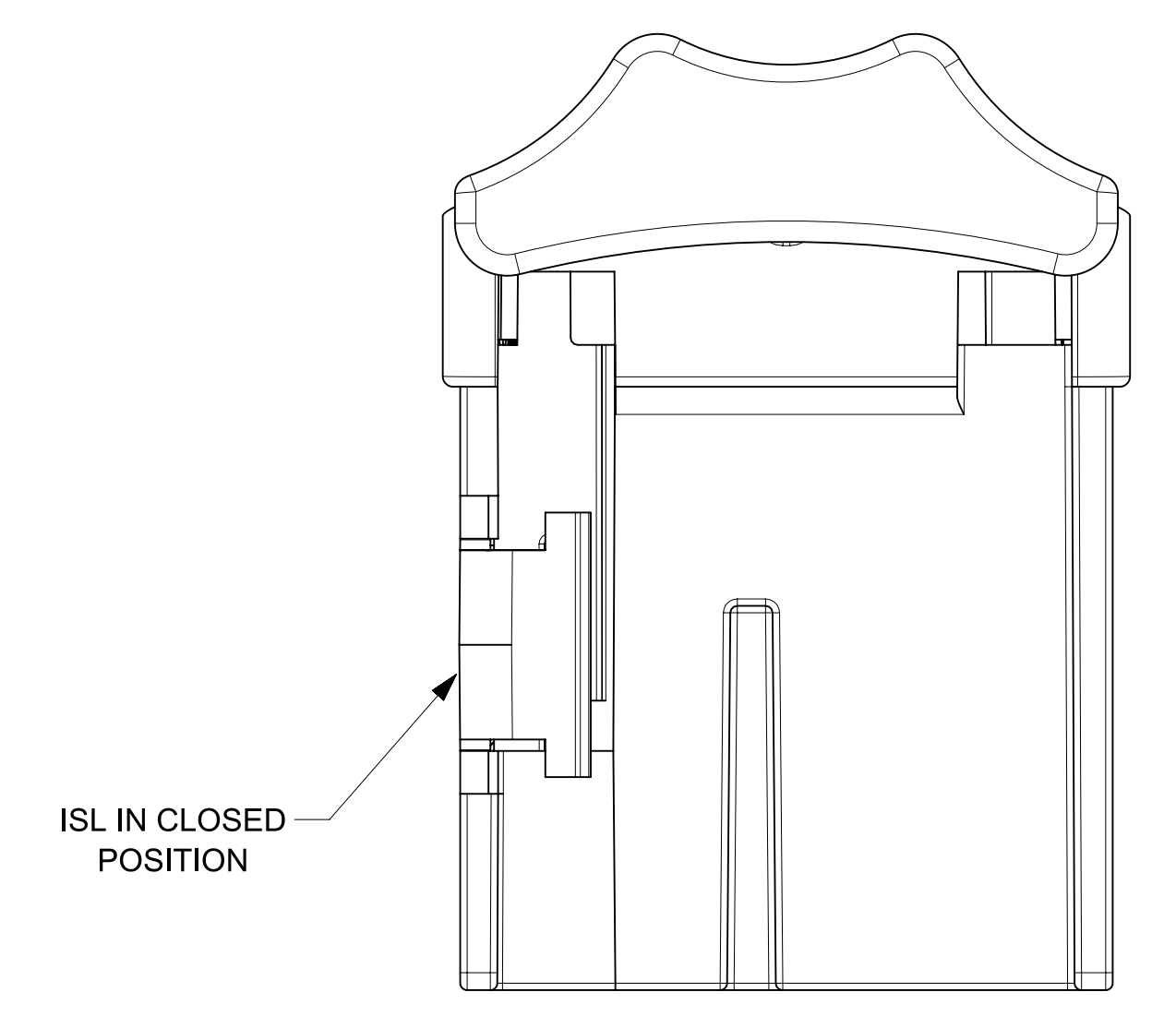
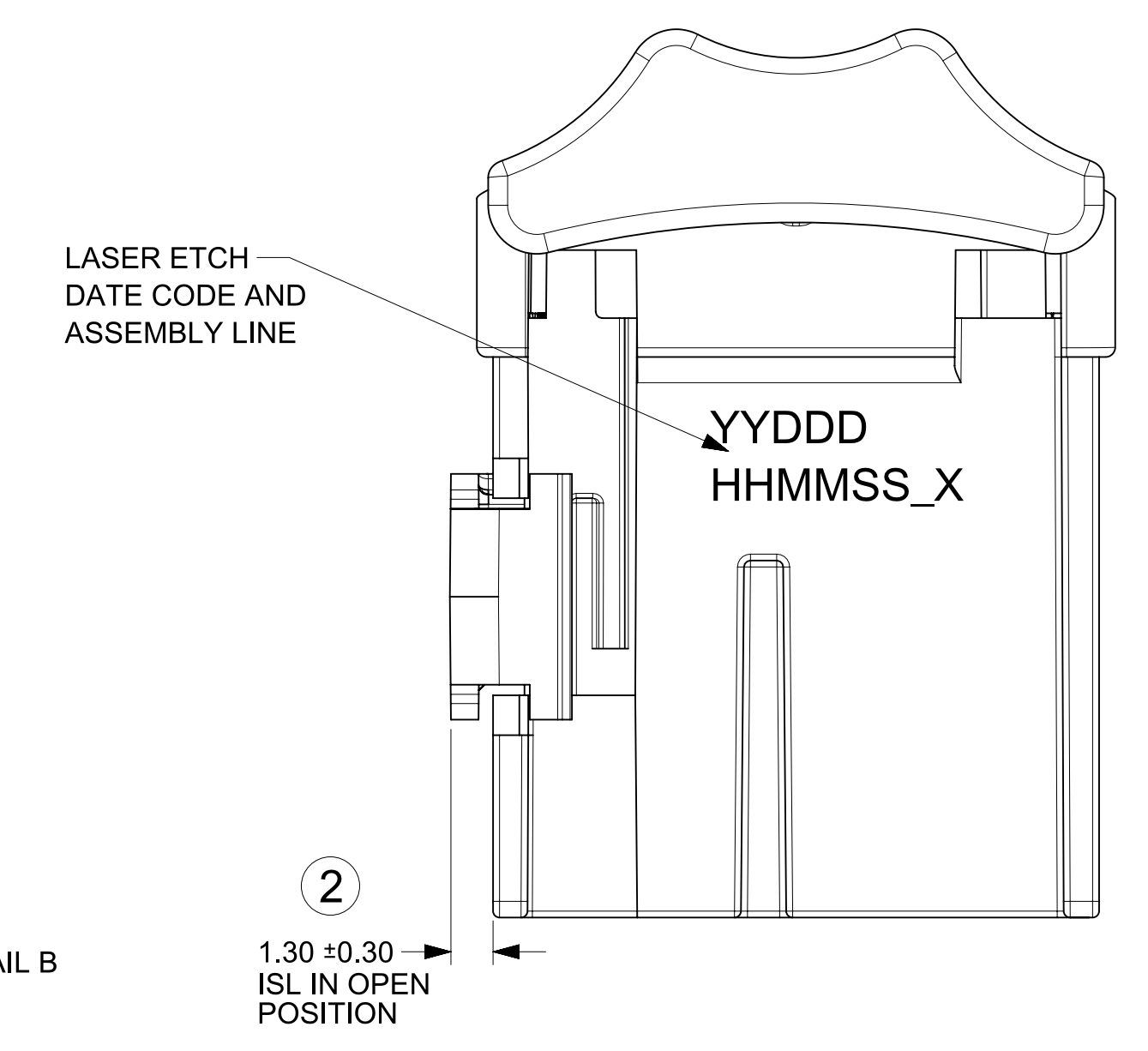
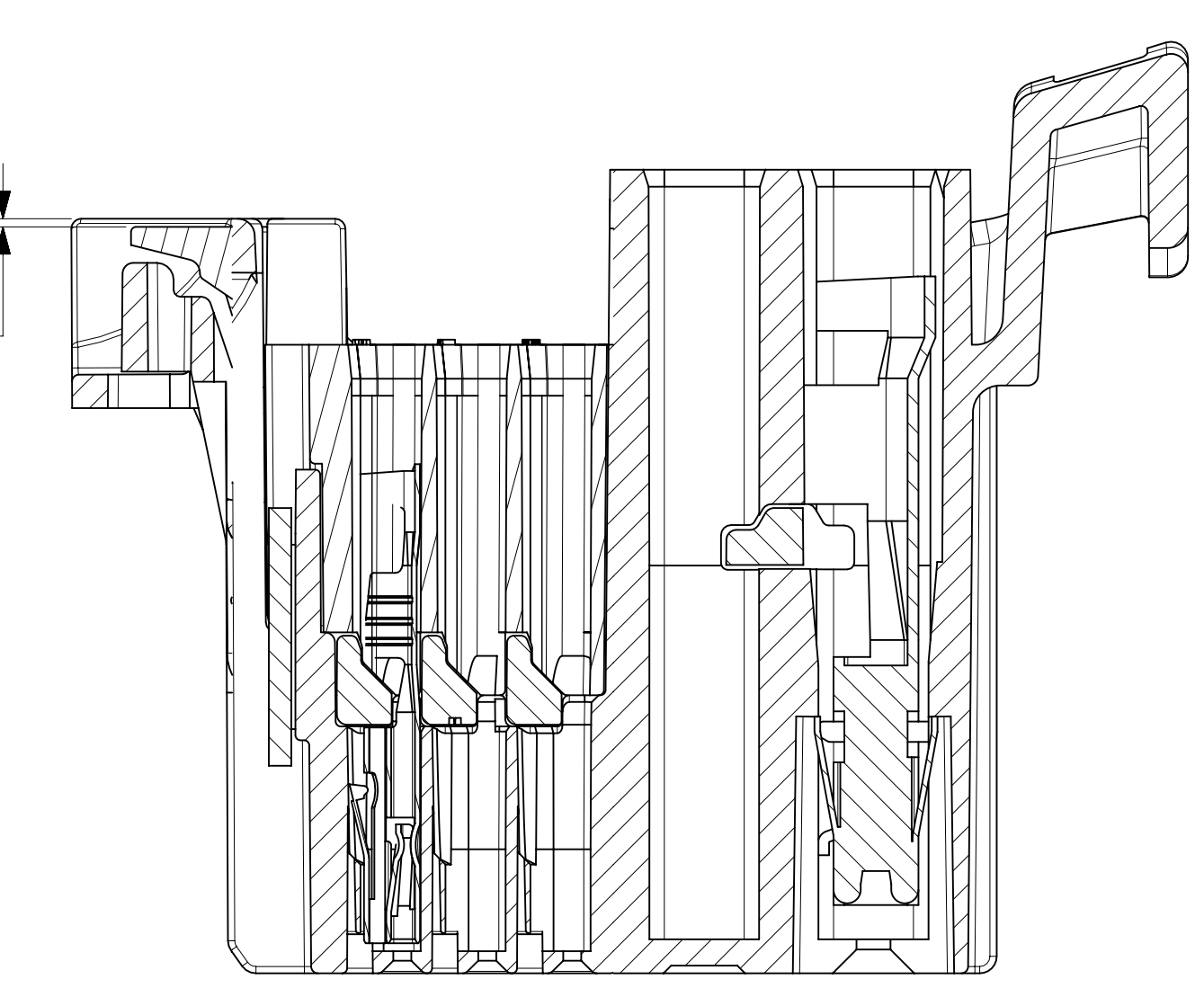
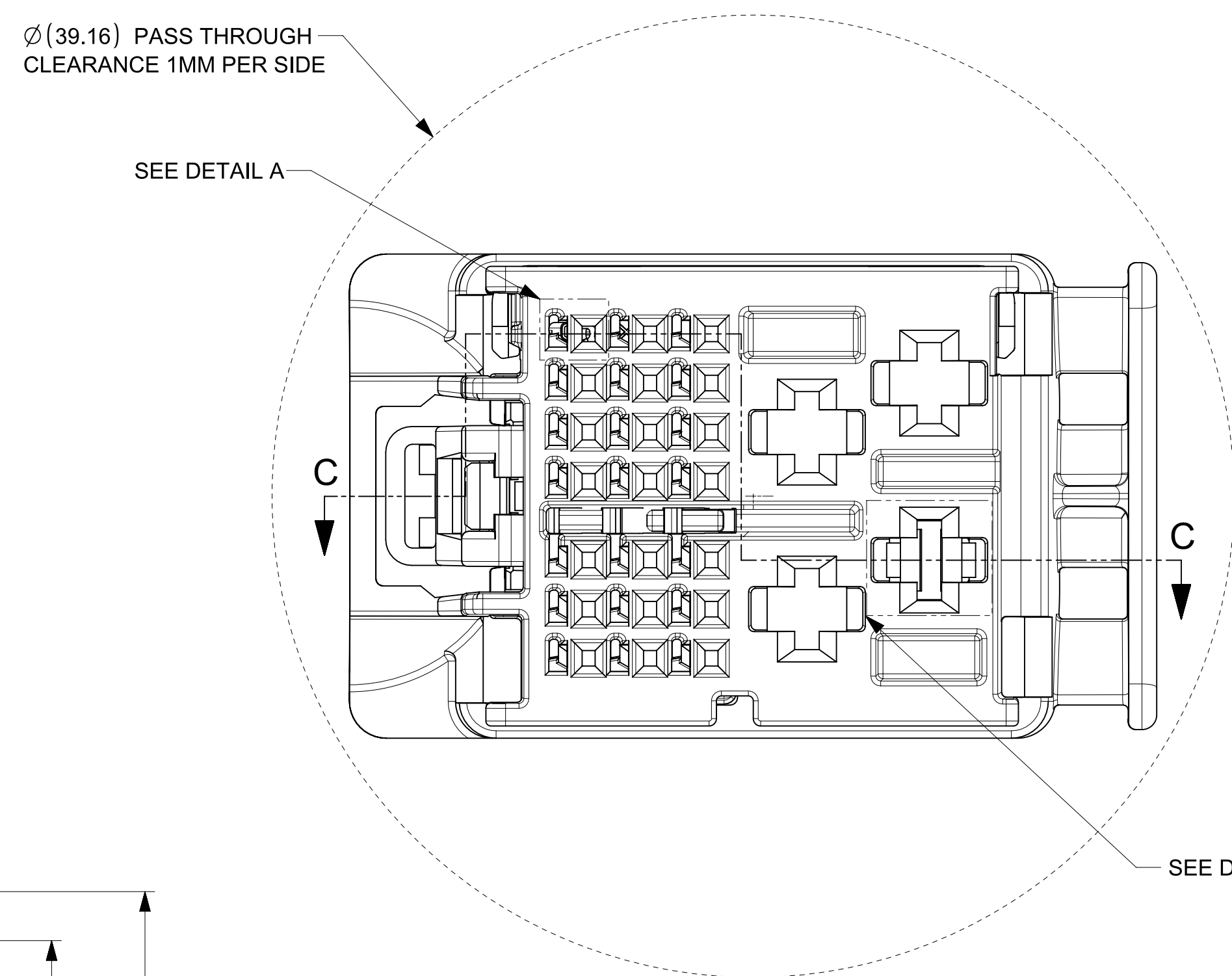
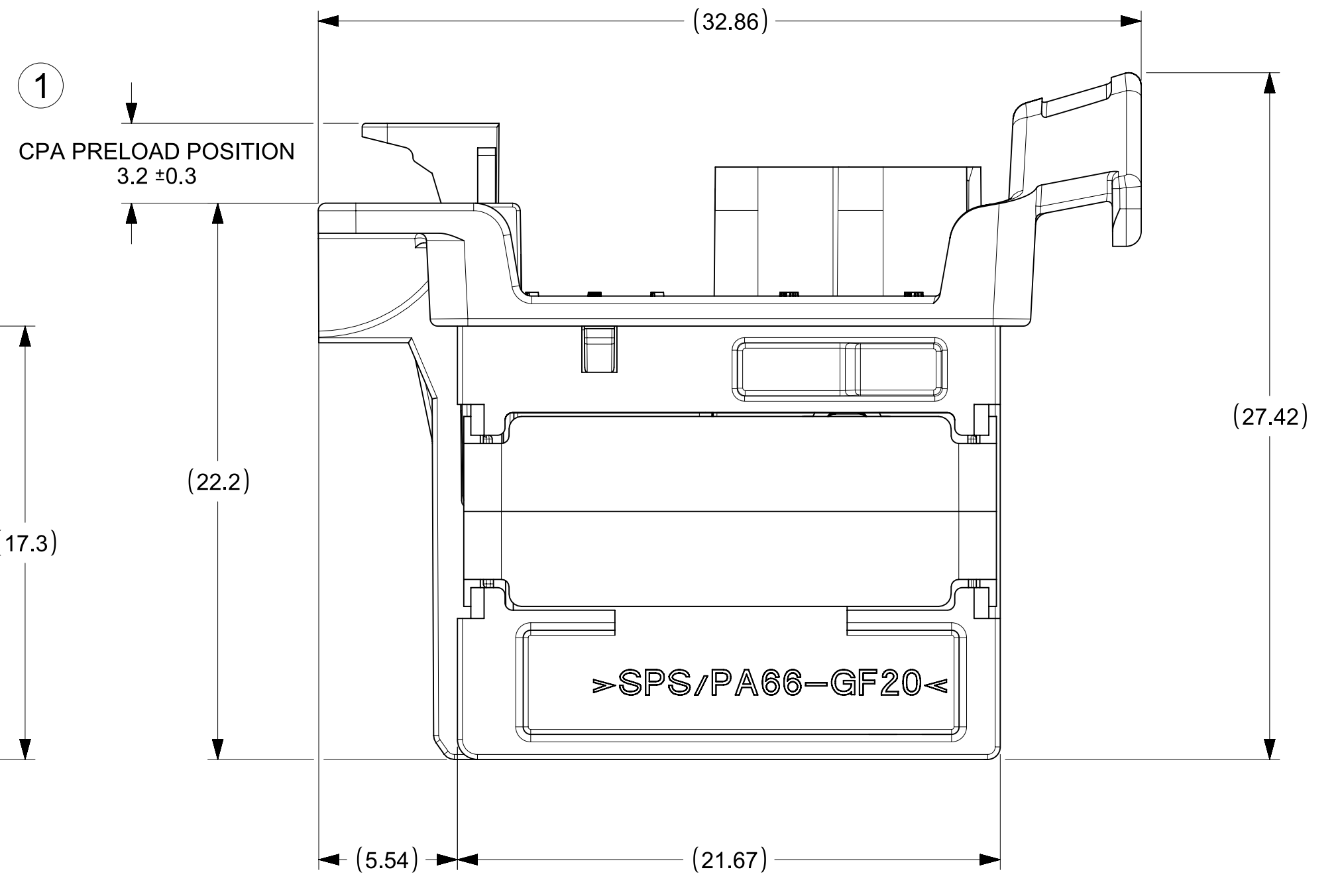
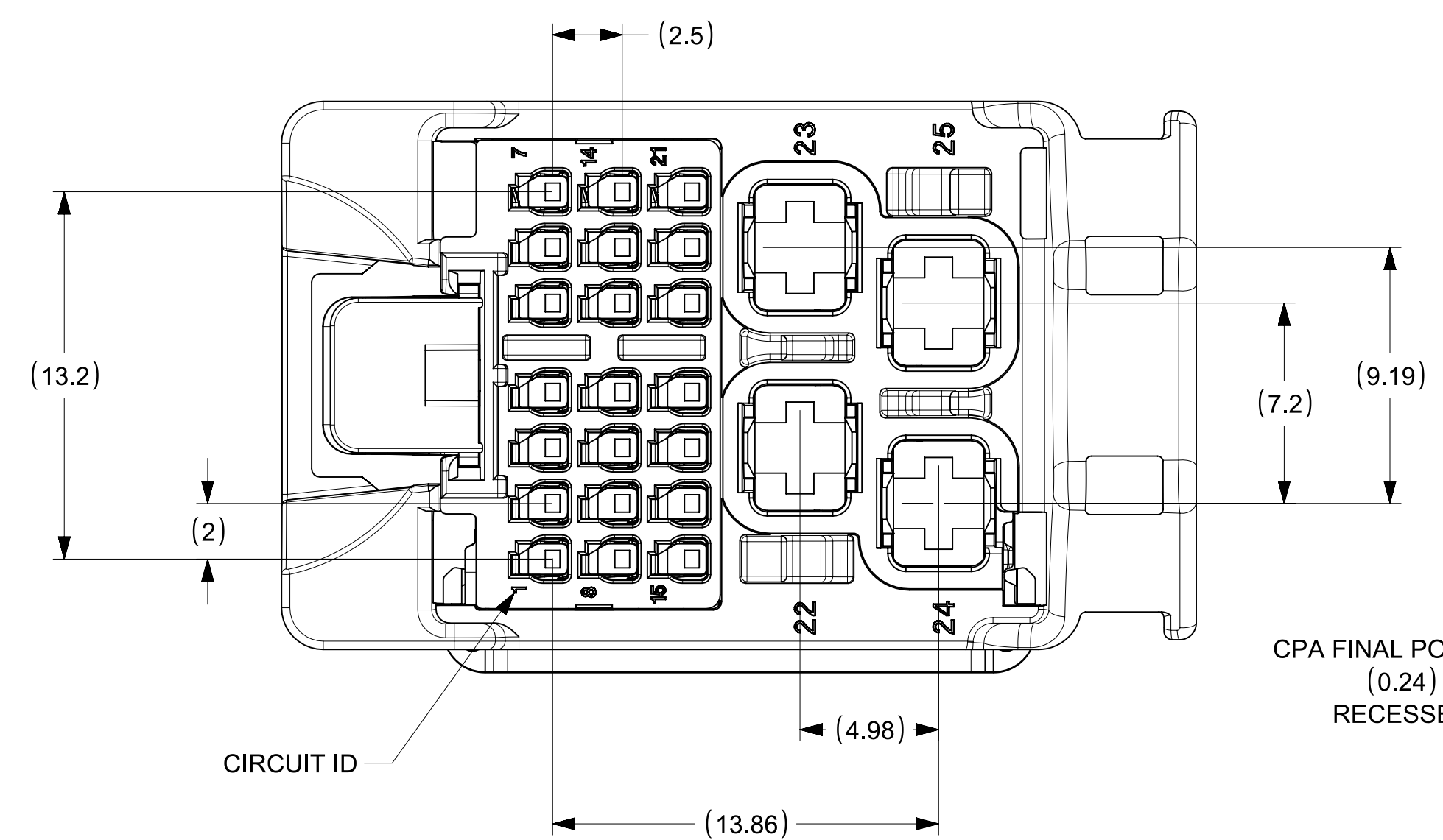
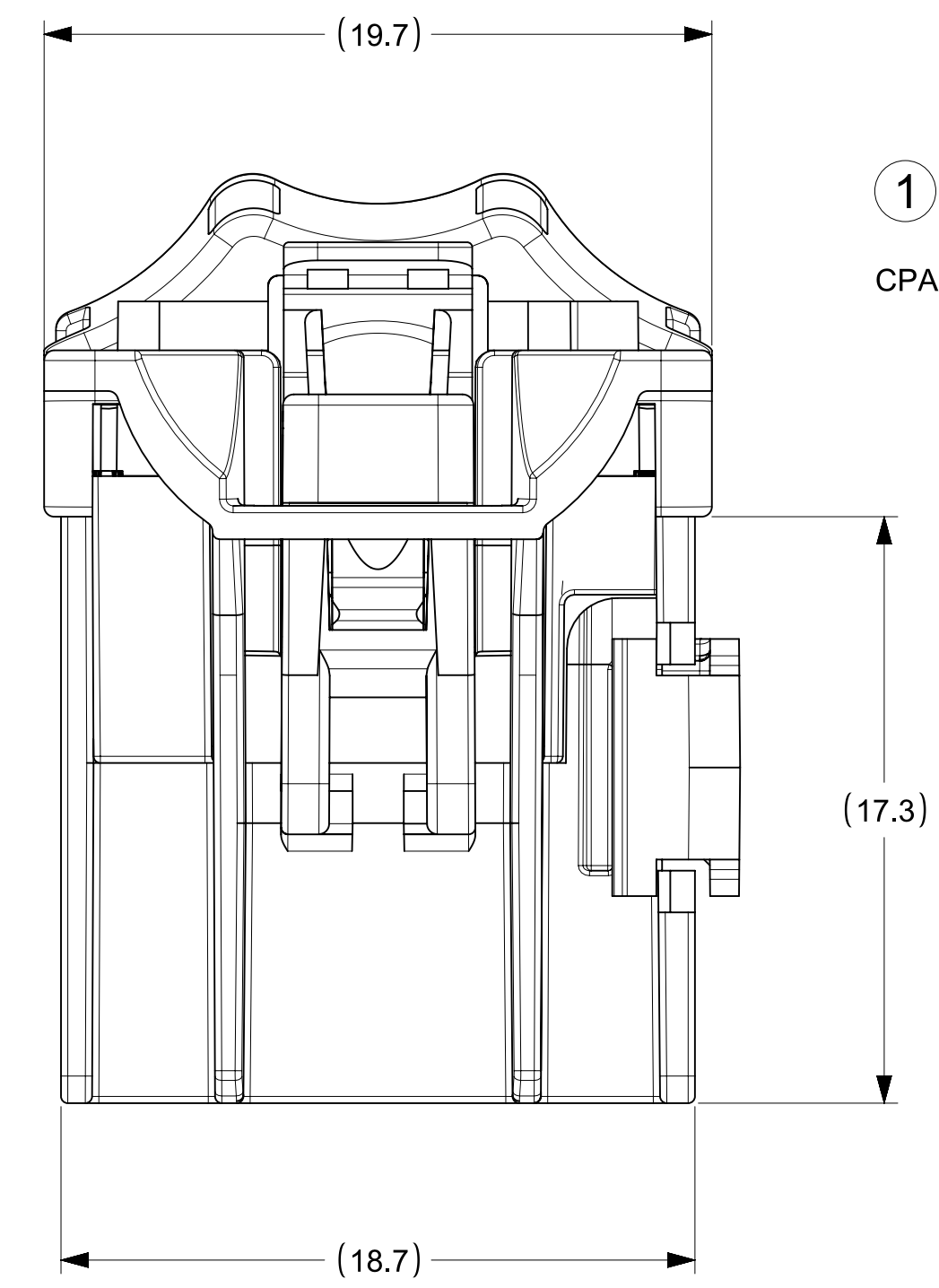
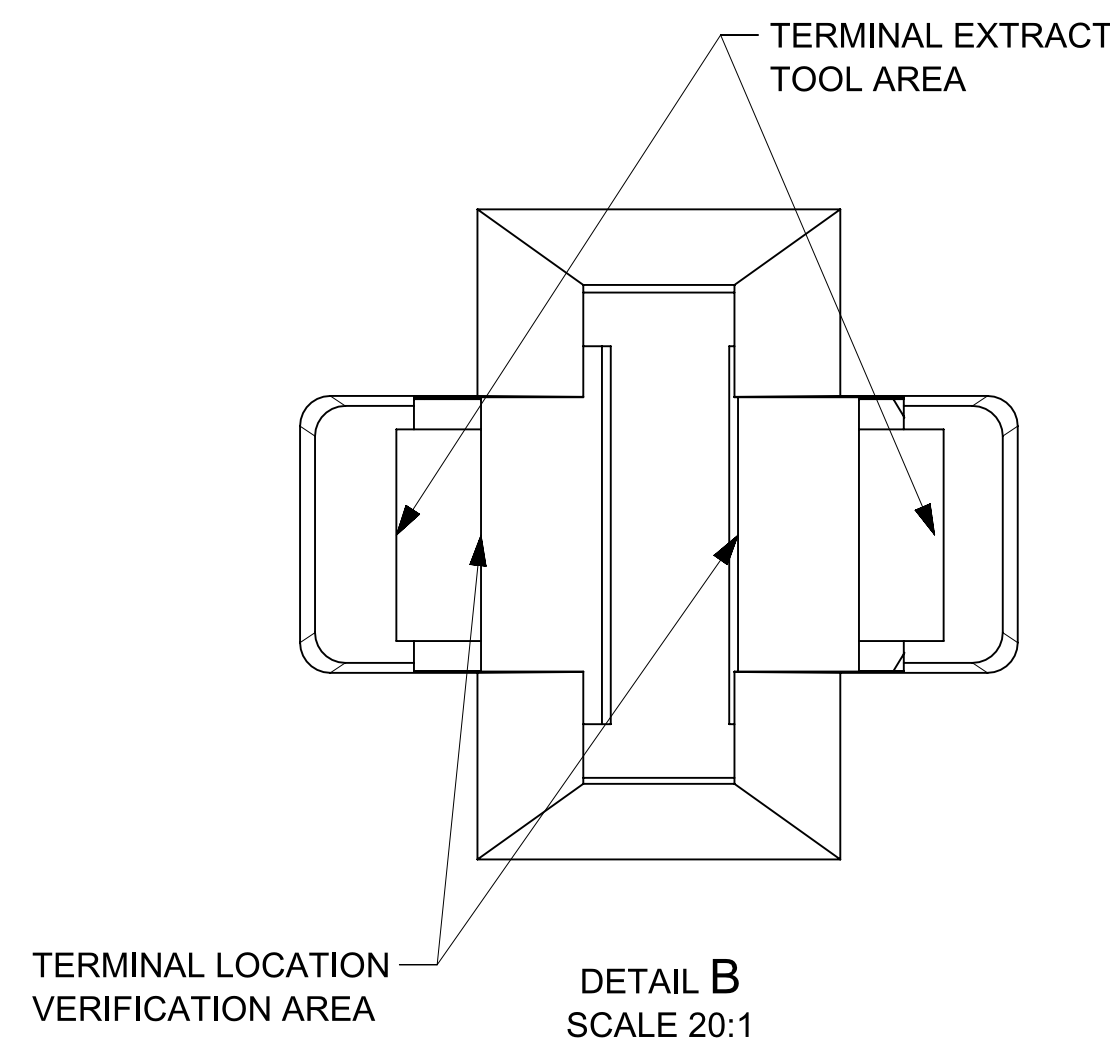
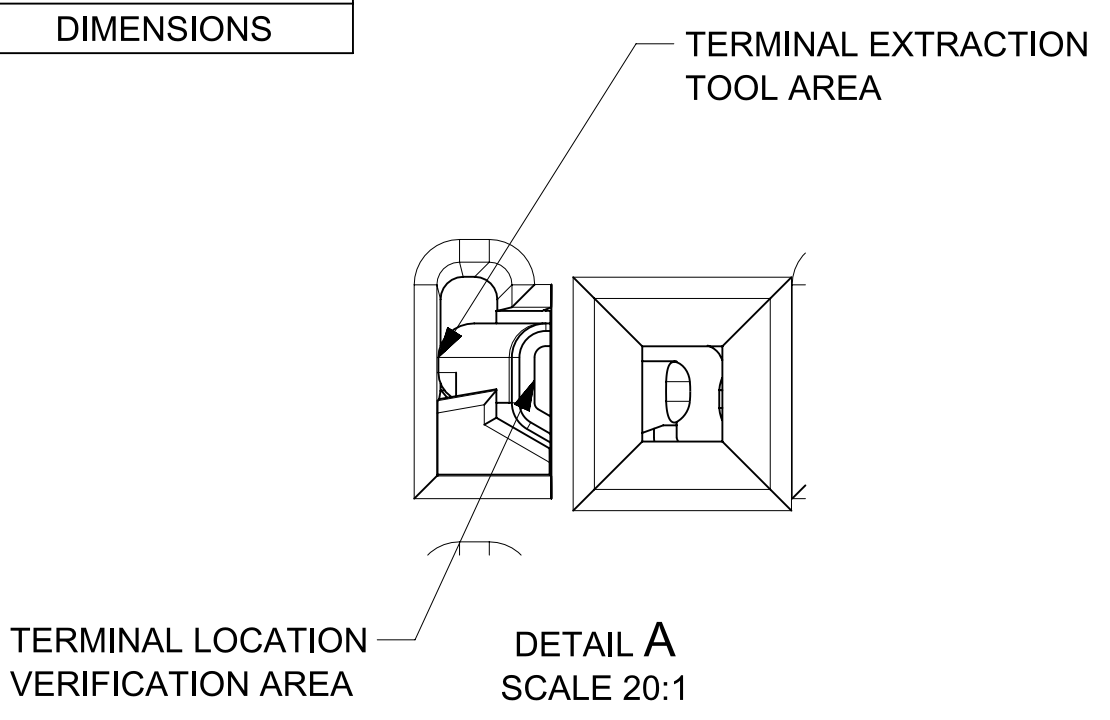
FUNCTIONAL SYMBOLS $F_A = 0$ $F_C = 0$ $F_D = 0$	THIS DRAWING CONTAINS INFORMATION THAT IS PROPRIETARY TO MOLEX ELECTRONIC TECHNOLOGIES, LLC AND SHOULD NOT BE USED WITHOUT WRITTEN PERMISSION DIMENSION UNITS: mm SCALE: 5:1 GENERAL TOLERANCES (UNLESS SPECIFIED): ANGULAR TOL $\pm 3^\circ$	CURRENT REV DESC: INITIAL RELEASE STATUS: Production DRWN: Vivian Liu1 CHK'D: Kenneth Dai APPR: Ringo Hu	2026-04-20 2026-05-15 2026-05-15
	DIVISIONAL SYMBOLS 4 PLACES \pm 3 PLACES \pm 2 PLACES ± 0.300 1 PLACE ± 0.30 0 PLACES ± 0.30	DRAFT WHERE APPLICABLE MUST REMAIN WITHIN DIMENSIONS	THIRD ANGLE PROJECTION

molex			
25WAY STAK50H HYBRID ASSEMBLY CONNECTOR ASSEMBLY			
PRODUCT CUSTOMER DRAWING			
DOCUMENT NUMBER	DOC TYPE	DOC PART	REVISION
1600270021	PSD	000	A
MATERIAL NUMBER	CUSTOMER	SHEET NUMBER	
		1 OF 3	

MOLEX ASSEMBLY PART NO.'S	CIRCUIT COUNT	KEY	OUTER SHROUD COLOR	COMPONENTS												
				ITEM 1								ITEM 2		ITEM 3		ITEM 4
				OUTER SHROUD KEY 1	OUTER SHROUD KEY 2	OUTER SHROUD KEY 3	OUTER SHROUD KEY 4	OUTER SHROUD KEY 5	OUTER SHROUD KEY 6	OUTER SHROUD KEY 7	OUTER SHROUD KEY 8	INNER HOUSING	INNER HOUSING	ISL	ISL	CPA
				SPS/PA66-GF20	SPS/PA66-GF20	SPS/PA66-GF20	SPS/PA66-GF20	SPS/PA66-GF20	SPS/PA66-GF20	SPS/PA66-GF20	SPS/PA66-GF20	SPS/PA66-GF20	SPS/PA66-GF20	SPS-GF30	SPS-GF30	PA66-GF50
				1600270511	1600270512	1600270513	1600270514	1600270515	1600270516	1600270517	1600270518	1600270701	1600271701	1600270601	1600271601	1600140703
1600270011	25CKT WITH CPA	1	LIGHT GREEN B	1								1		1		1
1600270012	25CKT WITH CPA	2	STONE GRAY		1							1		1		1
1600270013	25CKT WITH CPA	3	BLACK			1						1		1		1
1600270014	25CKT WITH CPA	4	DARK GRAY				1					1		1		1
1600270015	25CKT WITH CPA	5	DK PURPLE A					1					1		1	1
1600270016	25CKT WITH CPA	6	TBD						1				1		1	1
1600270017	25CKT WITH CPA	7	TBD							1			1		1	1
1600270018	25CKT WITH CPA	8	LT GRAY								1		1		1	1
1600270021	25CKT WITHOUT CPA	1	LIGHT GREEN B	1								1		1		
1600270022	25CKT WITHOUT CPA	2	STONE GRAY		1							1		1		
1600270023	25CKT WITHOUT CPA	3	BLACK			1						1		1		
1600270024	25CKT WITHOUT CPA	4	DARK GRAY				1					1		1		

THIS DRAWING CONTAINS INFORMATION THAT IS PROPRIETARY TO MOLEX ELECTRONIC TECHNOLOGIES, LLC AND SHOULD NOT BE USED WITHOUT WRITTEN PERMISSION

DIMENSION UNITS	SCALE	Material:	molex
mm	1:1	Heat treat:	
GENERAL TOLERANCES (UNLESS SPECIFIED)	Finish:	CURRENT REV DESC: INITIAL RELEASE	
ANGULAR TOL ± 3°			
4 PLACES ±		PRODUCT CUSTOMER DRAWING	
3 PLACES ±			
2 PLACES ± 0.300	STATUS: Production	DOCUMENT NUMBER	
1 PLACE ± 0.30	DRWN: Vivian Liu1 2026-04-20		
0 PLACES ± 0.30	CHK'D: Kenneth Dai 2026-05-15	1600270021	DOC TYPE
	APPR: Ringo Hu 2026-05-15	PSD	DOC PART
	ORIG DRWN BY: Vivian Liu1 2026-04-20	000	REVISION
TOOL NUMBER	THIRD ANGLE PROJECTION	160027	A
	DRAWING	MATERIAL NUMBER	CUSTOMER
	SERIES	1600270021	SHEET NUMBER
	D-SIZE		3 OF 3



FUNCTIONAL SYMBOLS FA = 0 FE = 0 FP = 0	THIS DRAWING CONTAINS INFORMATION THAT IS PROPRIETARY TO MOLEX ELECTRONIC TECHNOLOGIES, LLC AND SHOULD NOT BE USED WITHOUT WRITTEN PERMISSION		CURRENT REV DESC: INITIAL RELEASE	
	DIMENSION UNITS	SCALE		
	mm	5:1		
DIVISIONAL SYMBOLS	GENERAL TOLERANCES (UNLESS SPECIFIED)			
	ANGULAR TOL ± 3°			
	4 PLACES	±		
	3 PLACES	±		
	2 PLACES	± 0.300		
	1 PLACE	± 0.30		
	0 PLACES	± 0.30		
DRAFT WHERE APPLICABLE MUST REMAIN WITHIN DIMENSIONS		THIRD ANGLE PROJECTION	DRAWING	SERIES
			D-SIZE	160027
		STATUS: Production	DRWN: Vivian Liu1	2026-04-20
		CHK'D: Kenneth Dai	APPR: Ringo Hu	2026-05-15
				2026-05-15
		DOCUMENT NUMBER		DOC TYPE DOC PART REVISION
		1600270021		PSD 000 A
		MATERIAL NUMBER	CUSTOMER	SHEET NUMBER
				2 OF 3

molex

25WAY STAK50H HYBRID ASSEMBLY
CONNECTOR ASSEMBLY

PRODUCT CUSTOMER DRAWING