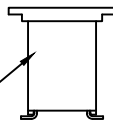


PRODUCT NUMBER  
95242-YXXZLF

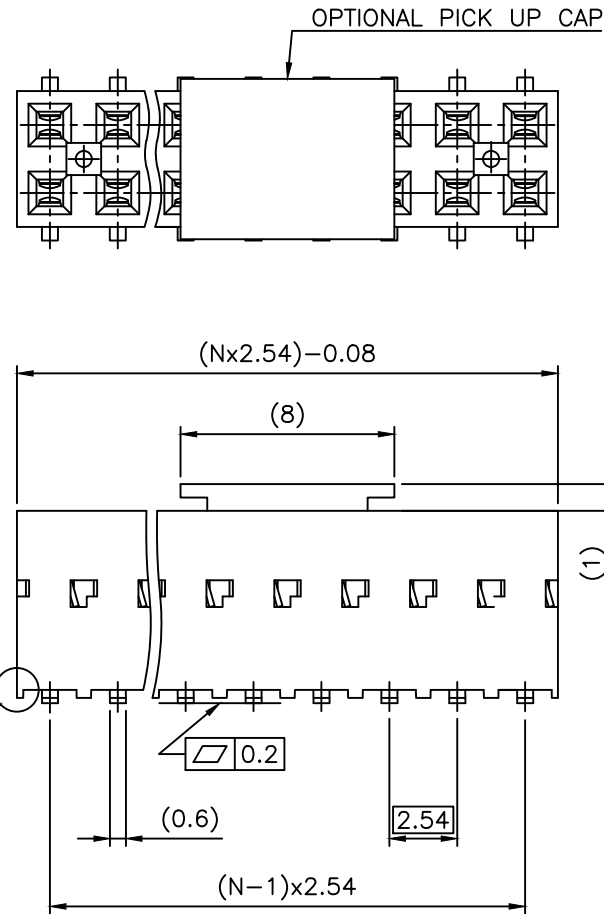
RoHS COMPATIBLE, SEE NOTE 7  
 OPTIONAL LETTER  
 A: PRODUCT WITH PICK UP CAP PACKED IN TAPE & REEL SEE TA856.  
 B: PRODUCT WITH PICK UP CAP PACKED IN TUBE.  
 NUMBER OF POSITIONS PER ROW: 02 TO 30.  
 MORE THAN 30 POSITIONS ON SPECIAL REQUEST.  
 PLATING CODE  
 3= 0.76µm GOLD ON CONTACT AREA.  
 2µm MIN MATTE TIN ON TAIL.  
 4= 2µm MIN MATTE TIN FULL PLATED  
 1.27µm Ni MIN UNDERPLATING

NOTES:

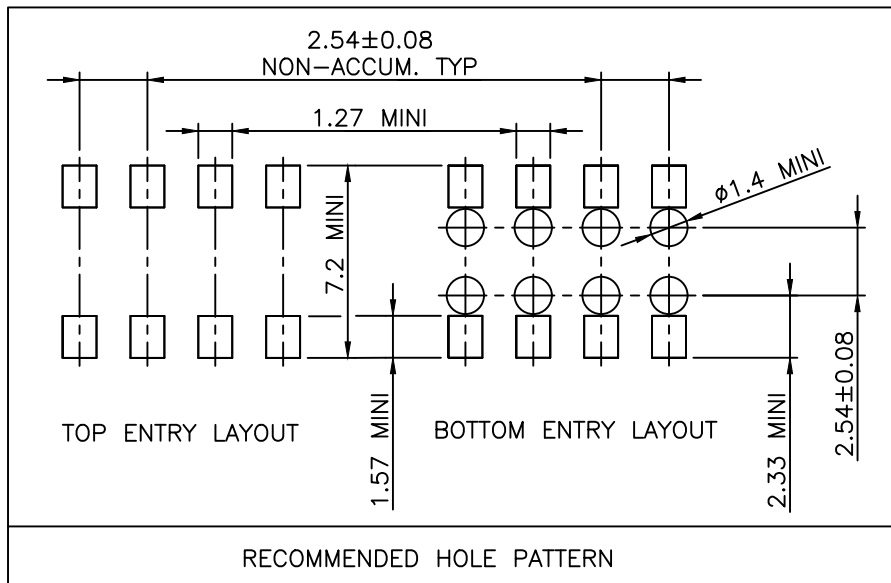
- 1 - HOUSING & PICK UP CAP MATERIAL: THERMOPLASTIC GLASS FILLED FLAME RETARDANT PER UL 94 V-0  
HIGH TEMPERATURE: COLOR BLACK.
- 2 - TERMINAL MATERIAL: PHOSPHOR BRONZE.
- 3 - 02 UP TO 04 POSITIONS PRODUCT PACKED IN PLASTIC BOX.  
05 UP TO 30 POSITIONS PRODUCT PACKED IN TUBE.  
WHOLE 95242-Y04B PACKED IN TUBE.
- 4 - TO DETERMINE DIMENSIONS:  
N = NUMBER OF POSITIONS PER ROW  
EXAMPLE: 8 POS: (N x 2.54) - 0.08 = 20.24 mm.
- 5 - RECOMMENDED IR PROFILE PER TA842.
- 6 - SPECIAL ORIENTATION OF CAP FOR 2x2 POSITIONS ONLY.
- 7 - RoHS COMPATIBLE PRODUCT SPECIFICATIONS
  - a - PLATING:  
- "LF" MEANS THE PRODUCT IS LEAD-FREE, 2µm MINIMUM MATTE TIN OVER 1.27µm MINIMUM NICKEL UNDERPLATE.
  - b - MANUFACTURING PROCESS COMPATIBILITY  
- THE HOUSING WILL WITHSTAND EXPOSURE TO 260°C PEAK TEMPERATURE FOR 30 SECONDS MAX IN A CONVECTION, INFRA-RED OR VAPOR PHASE OR REFLOW OVEN.
  - c - LABELING:  
- MEETS PACKAGING SPECS AS PER GS-14-920
  - d - LEGAL STATEMENT: SEE GS-47-0004
- 8 - END STAND-OFFS FOR 2x2 UP TO 2x4 POS  
NO END STAND-OFFS FOR 2x5 UP TO 2x50 POS
- 9 - THIS PART SERIES IS NOT INITIALLY INTENDED FOR AUTOMOTIVE APPLICATIONS. ADDITIONAL FEES ARE CHARGEABLE FOR ANY ADDITIONAL QUALIFICATION AND TEST REPORTS PERFORMED OUTSIDE THE SCOPE OF THE STANDARD PRODUCT SPECIFICATIONS.
- 10 - UNLESS OTHERWISE APPROVED BY AMPHENOL, ALL PARTS AND COMPONENTS ARE DESIGNED & BUILT ACCORDING TO AMPHENOL'S SPECIFICATIONS WHICH ARE SUBJECT TO CHANGE WITHOUT NOTICE.



NOTE 8



mat'l. code		surface		tolerance		projection		product family	
SEE NOTE 1 & 2		ISO 1302 ✓		ISO 406 ISO 1101		DUBOX		DUBOX	
ltr	ecn no	dr	date	tolerances unless otherwise specified		mm		title	
R	F-24429	AMA	16.07.01	±0.3		mm		BtB RECEPT. VERT DR SMT	
S	F-59290	DDE	26.02.02	angles	linear	scale 5:1		dwg no	
				±2'				sheet 1 of 2	
L	F06-0137	DLE	06.02.27	dr	P.NIZZI	95.06.21	Amphenol		size
M	F06-0204	DLE	06.06.28	enrg	JM.PHAMVAN	95.06.21	FCI		A3
N	F11-0043	JCO	12.02.22	chr	P.NIZZI	95.06.21	95242		
P	B-19123	LMU	14.10.21	appd	JM.PHAMVAN	95.06.21	CUSTOMER		Drawing
sheet	revision	S	C						
index	sheet	1	2						



mat'l. code		surface ISO 1302 ✓		tolerance ISO 406 ISO 1101		projection mm		product family DUBOX	
ltr	ecn no	dr	date	tolerances unless otherwise specified		mm		title BtB RECEPT. VERT DR SMT	
A	F04-0347	DLE	04.11.15	angles	linear	±0.3		dwg no 95242	
B	F06-0204	DLE	06.06.28	±2'		scale 5:1		sheet 1 of 2 A3	
C	F-59290	DDE	26.02.02					type CUSTOMER Drawing	
				dr	P.NIZZI	95.06.21	Amphenol FCI		
				enr	JM.PHAMVAN	95.06.21			
				chr	P.NIZZI	95.06.21			
				appd	JM.PHAMVAN	95.06.21			
sheet index	revision sheet								