

WE RECOMMEND THESE CONNECTORS FOR OPTIMAL SERVICE LEVEL



- SHORT LEAD-TIMES
- LOW MOQs
- QUICK SAMPLING
- AVAILABLE AT DISTRIBUTION



- 57202-G52-04ALF
- 57202-G52-06ALF
- 57202-G52-10ALF

PLATING
G = 0.76µm GOLD/GXT ON CONTACT AREA
2µm TIN MIN ON TAIL
1.27µm Ni MIN UNDERLAYER

RoHS COMPATIBLE
SEE NOTE 7

PACKAGING :
A = TAPE AND REEL WITH PICK UP CAP

PIN STYLE

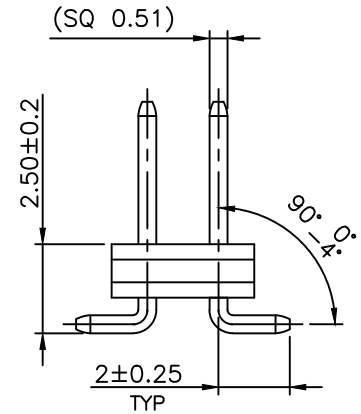
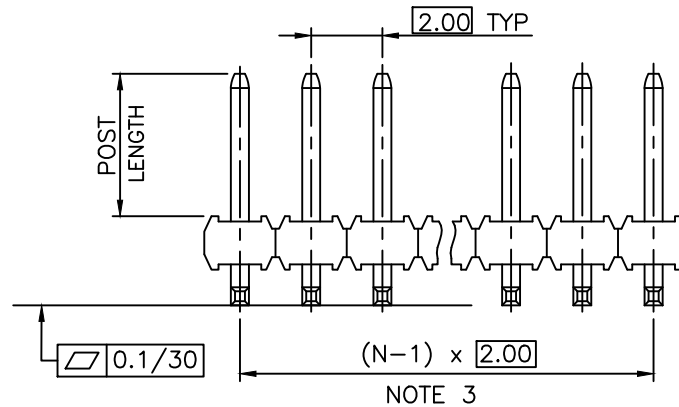
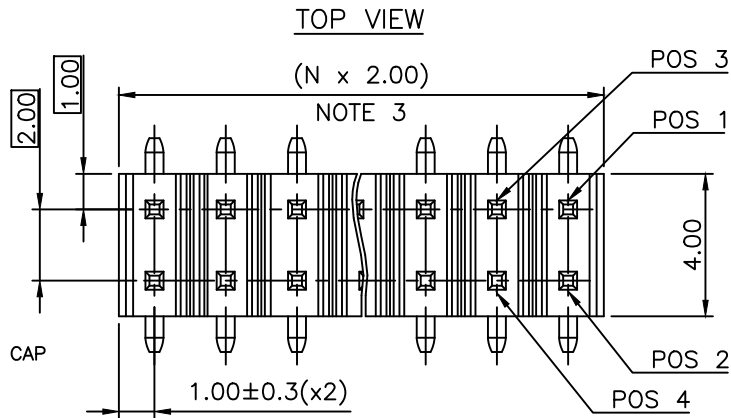
NB OF POSITIONS PER ROW

NOTES:

- MATERIAL HOUSING: HIGH TEMP. THERMOPLASTIC
UL 94V-0, COLOR BLACK
- MATERIAL TERMINAL: COPPER ALLOY
- TO DETERMINE DIMENSIONS:
N = NUMBER OF POSITIONS PER ROW.
- 7N MIN. PIN RETENTION IN EITHER DIRECTION.
- PACKAGING:
= STANDARD PACKAGING IN POLYBAGS
- = POLYBAGS PACKAGING WHEN POLARISATION FEATURE APPLICABLE.
U = TUBE AVAILABLE FROM 04 TO 25 POS PER ROW.
A = TAPE AND REEL WITH PICK UP CAP, AS AVAILABLE
K = TAPE AND REEL WITHOUT CAP, AS AVAILABLE.
ER = TAPE & REEL WITH CAP, FOR CUSTOMER DEDICATED PART AND SPECIFIC LABEL ON REEL
TR = TAPE & REEL WITH SMALL PICK UP CAP, SEE SHEET 2
- FOR POLARIZATION, SPECIFY POSITION NUMBER TO OMIT PIN.
EXAMPLE : 03 = OMIT PIN POSITION 3, SEE TOP VIEW.
OMIT FROM PRODUCT NUMBER IF THIS FEATURE IS NOT APPLICABLE.
- RoHS COMPATIBLE PRODUCT SPECIFICATIONS
 - PLATING:
- "LF" MEANS THE PRODUCT IS LEAD-FREE,
2µm MINIMUM MATTE TIN OVER 1.27µm
MINIMUM NICKEL UNDERPLATE.
 - MANUFACTURING PROCESS COMPATIBILITY
- THE HOUSING WILL WITHSTAND EXPOSURE TO
260°C PEAK TEMPERATURE FOR 30 SECONDES
IN A CONVECTION, INFRA-RED OR VAPOR
PHASE REFLOW OVEN.
 - LABELLING:
- MEETS PACKAGING SPECS AS PER GS-14-920
 - LEGAL STATEMENT : SEE GS-47-0004

8. THIS PART SERIES IS NOT INITIALLY INTENDED FOR AUTOMOTIVE APPLICATIONS.
ADDITIONAL FEES ARE CHARGEABLE FOR ANY ADDITIONAL QUALIFICATION AND TEST REPORTS PERFORMED OUTSIDE THE SCOPE OF THE STANDARD PRODUCT SPECIFICATIONS.

9. UNLESS OTHERWISE APPROVED BY AMPHENOL, ALL PARTS AND COMPONENTS ARE DESIGNED & BUILT ACCORDING TO AMPHENOL'S SPECIFICATIONS WHICH ARE SUBJECT TO CHANGE WITHOUT NOTICE.



mat'l. code SEE NOTES				surface ISO 1302 ✓		tolerance ISO 406 ISO 1101		projection mm		product family MINITEK	
ltr	ecn no	dr	date	tolerances unless otherwise specified						title	
U	F-49168	DDE	23.09.01	angles	linear	.x ±0.3	mm		UNSH HEADER		
V	F-49735	DDE	23.11.10			.xx ±0.15			2.00mm VERTICAL SMT		
W	F-52794	DDE	24.09.04			.xxx ±0.05	scale 5:1		dwg no		
X	F-54432	DDE	25.01.27	dr	L.MULIN	04.05.06			sheet 1 of 2		
Y	F-54544	DDE	25.02.07	enr	J.COMPAGNON	04.11.25			size		
AA	F-58496	DDE	25.12.05	chr	J.COMPAGNON	04.11.25			A3		
				appd	J.COMPAGNON	04.11.25			type		
sheet		revision		AA	Y						
index		sheet		1	2						

EXTENDED RANGE

PRODUCT NUMBER
57202-XXX-XXXXXLF

PLATING _____
(AS AVAILABLE)

S = 0.38µm GOLD/GXT ON CONTACT AREA
2µm MIN MATTE TIN ON TAIL

G = 0.76µm GOLD/GXT ON CONTACT AREA
2µm MIN MATTE TIN ON TAIL

F = GOLD FLASH ON CONTACT AREA
2µm MIN MATTE TIN ON TAIL

T = 2-6.0µm FULL MATTE TIN

1.27µm MIN NICKEL UNDERPLATING

RoHS COMPATIBLE
SEE NOTE 7

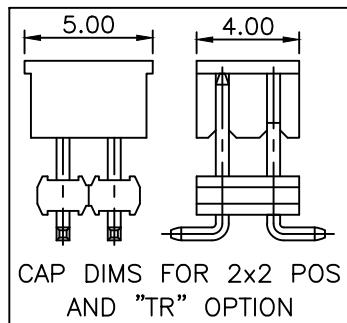
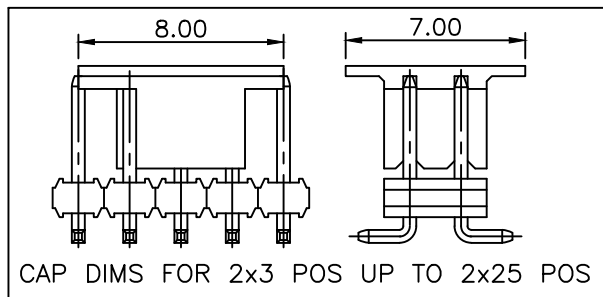
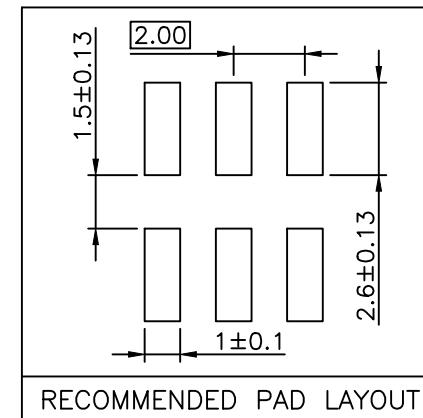
POLARIZATION, SEE NOTE 6

PACKAGING, SEE NOTE 5
(MAY BE SUBJECT TO TOOLING FEES)

NB OF POS PER ROW : 02 TO 25

PIN STYLE
(AS AVAILABLE)

PIN STYLE	POST LENGTH ±0.2
51	2.00
52	4.00
53	3.50
54	2.50
55	5.50



mat'l. code SEE NOTES		surface ISO 1302 ✓	tolerance ISO 406 ISO 1101	projection mm	product family MINITEK
ltr	ecn no	dr	date	tolerances unless otherwise specified	title
U	F-49168	DDE	23.09.01	angles linear .x ±0.3	UNSH HEADER 2.00mm VERTICAL SMT
V	F-49735	DDE	23.11.10	.xx ±0.15	
W	F-52794	DDE	24.09.04	.xxx ±0.05	
X	F-54432	DDE	25.01.27	dr L.MULIN 04.05.06	dwg no sheet 2 of 2 size
Y	F-58496	DDE	25.12.05	engr J.COMPAGNON 04.11.25	57202 A3
T	F-23051	AMA	16.01.15	chr J.COMPAGNON 04.11.25	type CUSTOMER Drawing
sheet index	revision sheet				