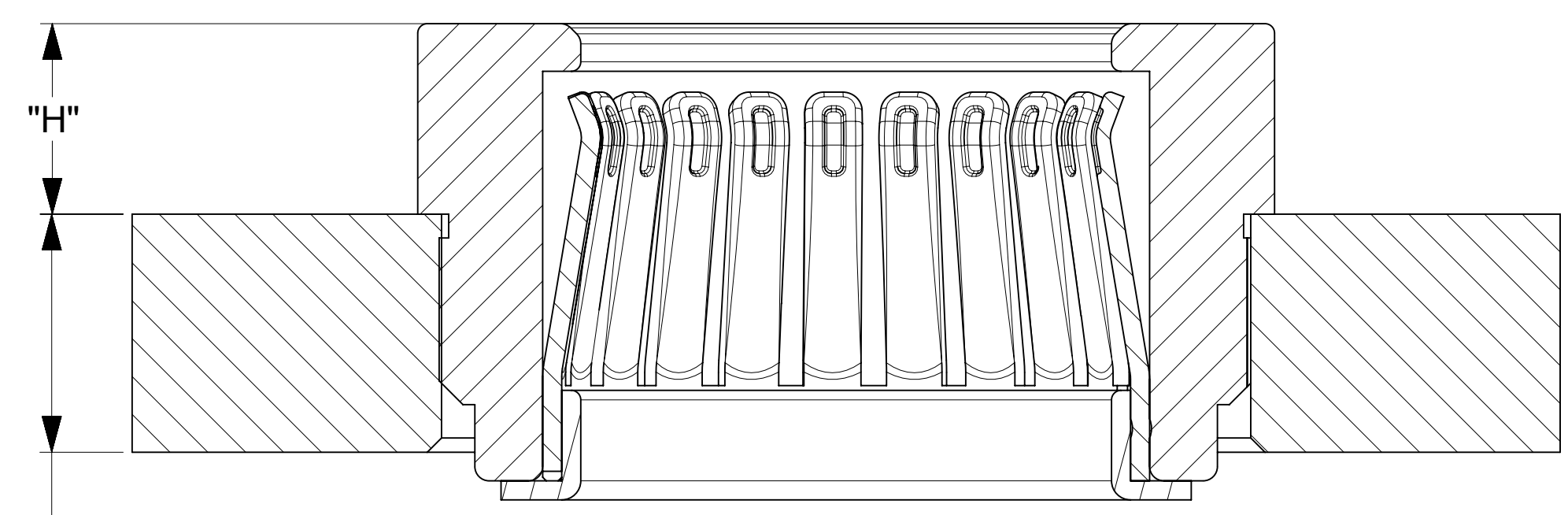
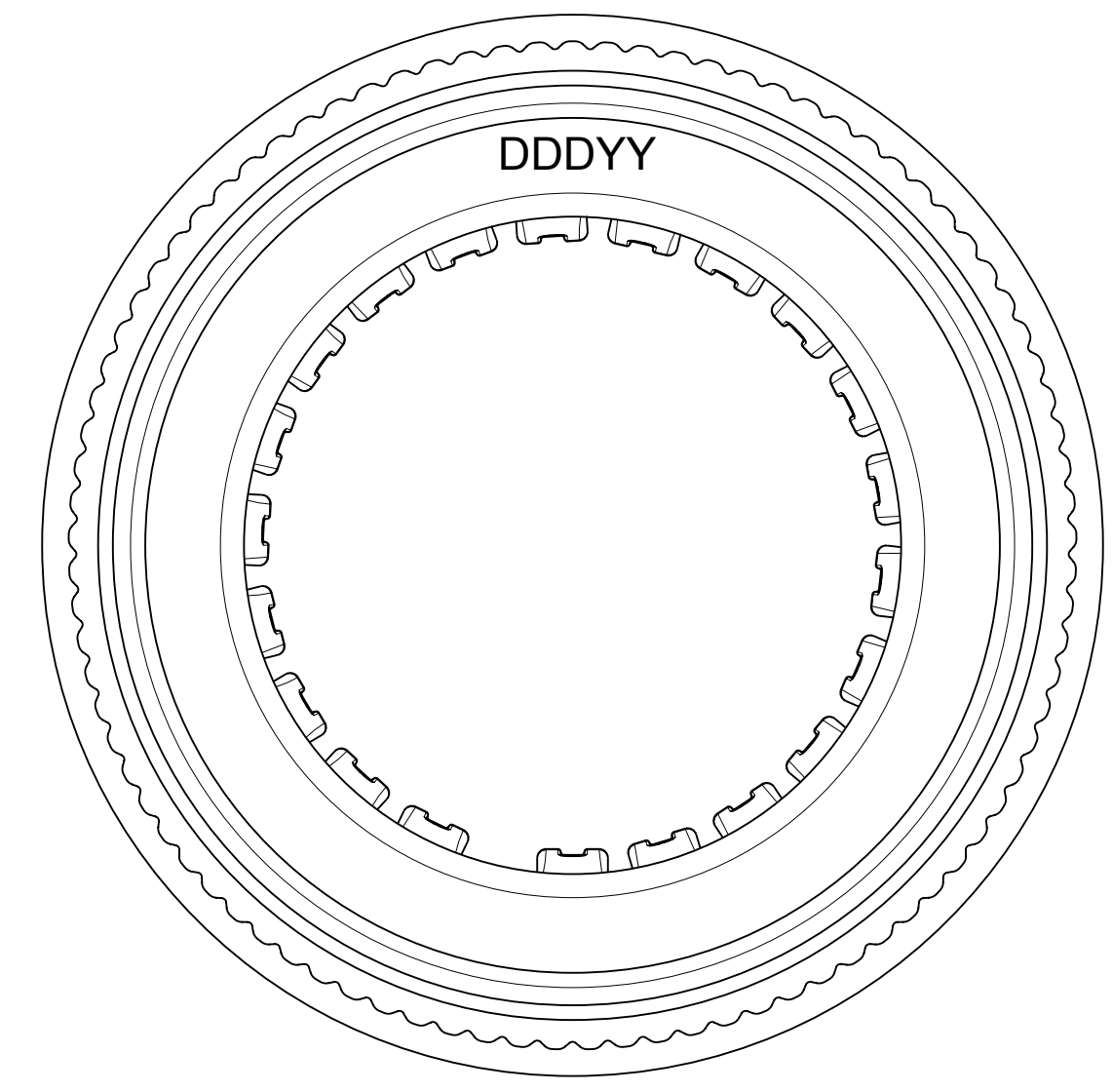
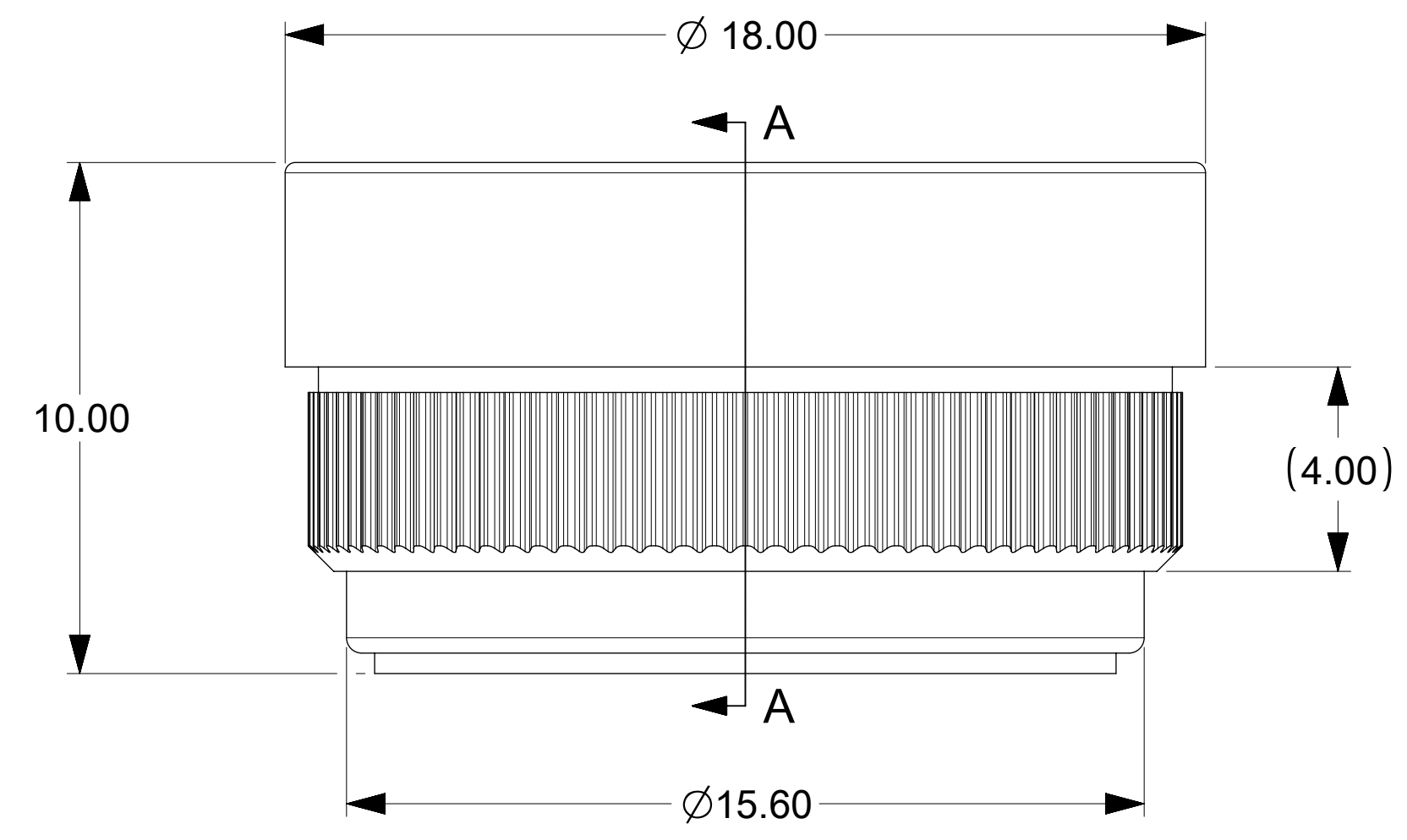
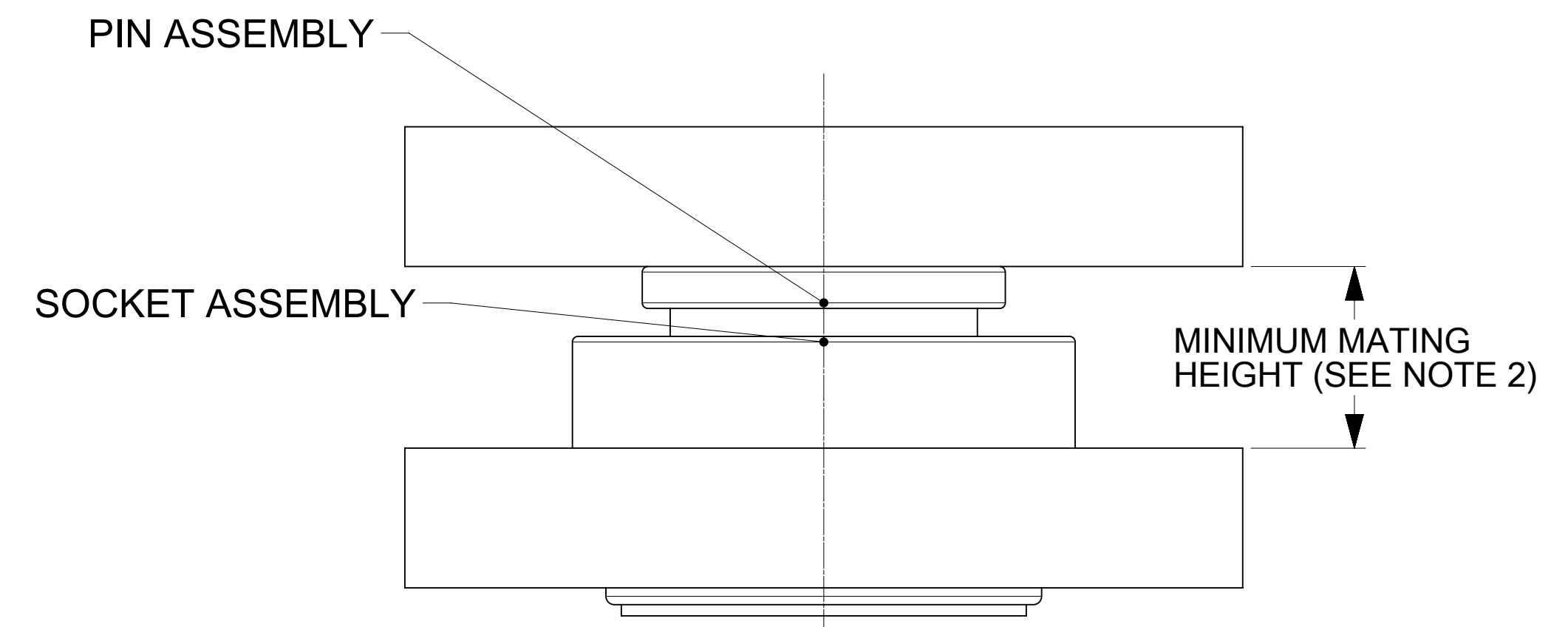
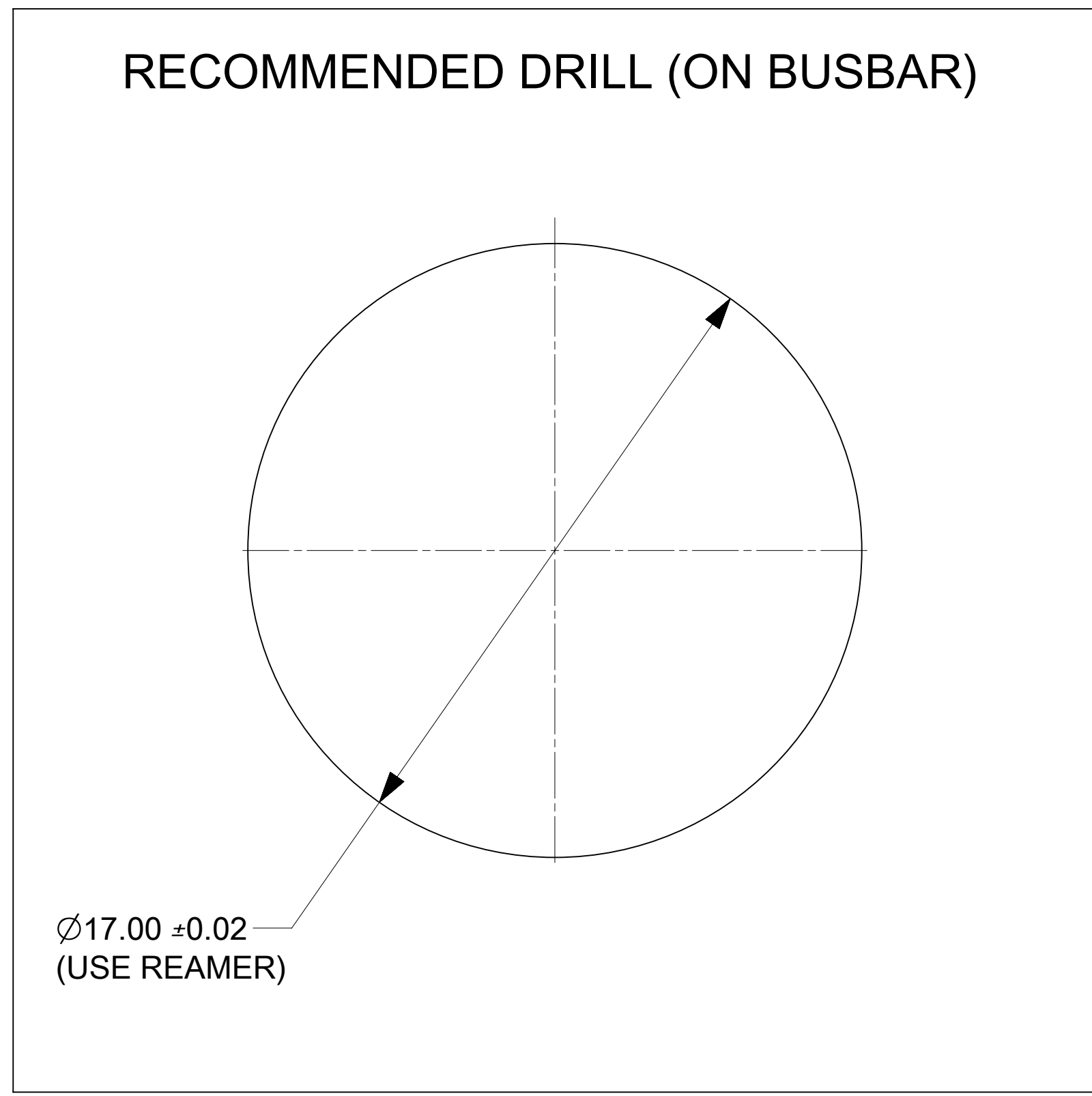
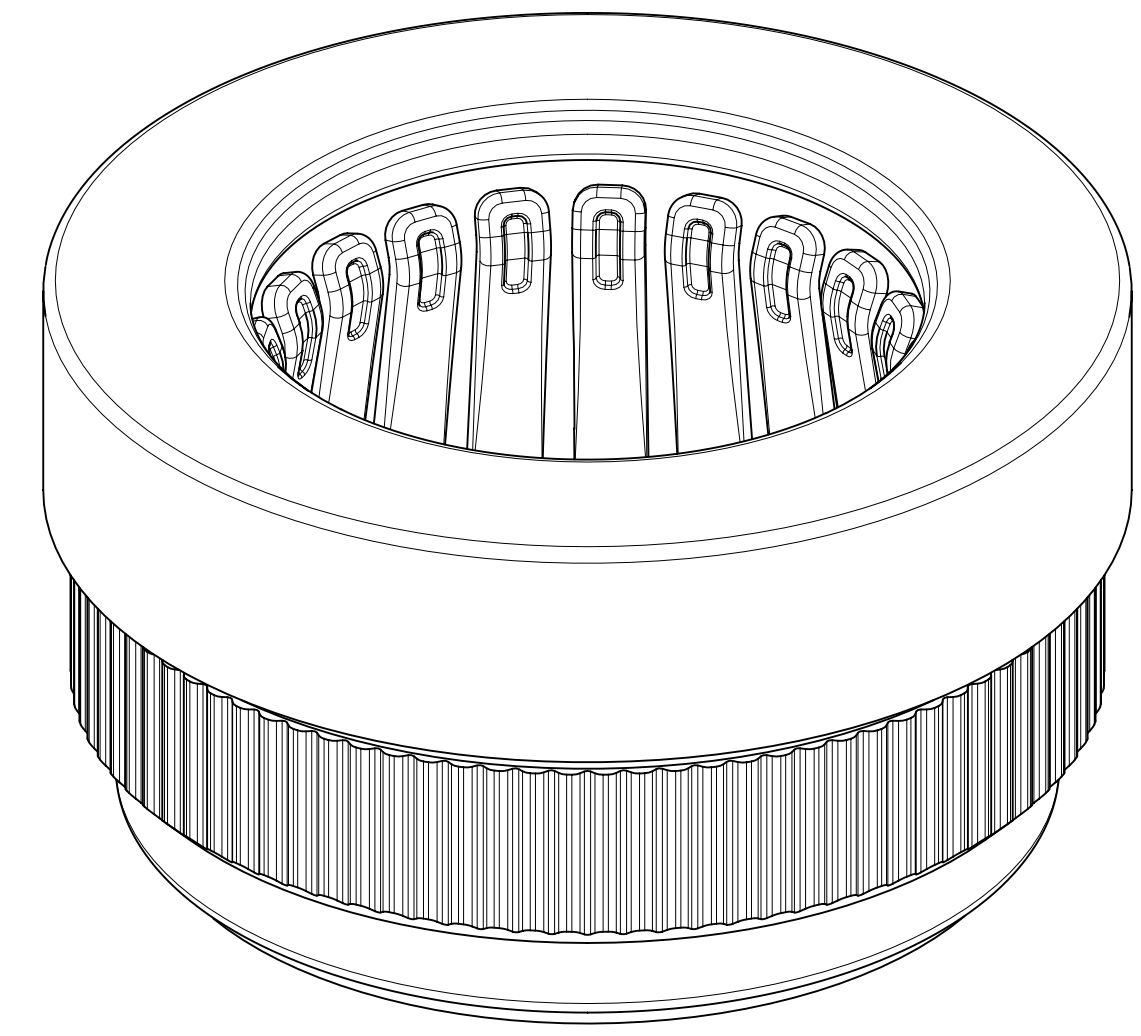


PART NUMBER	DIM "H"	NOTE
213780-0001	4.00± 0.3	

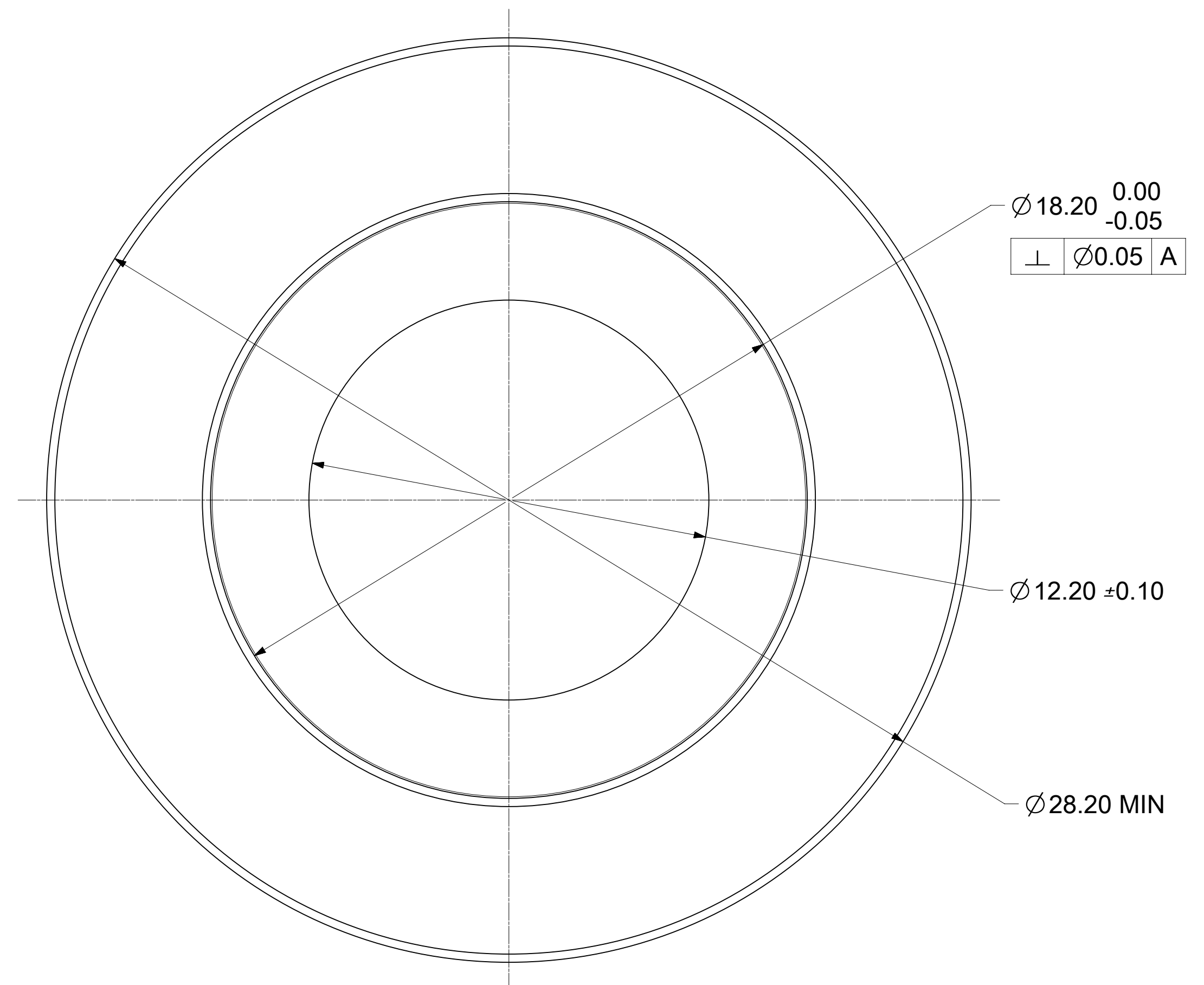
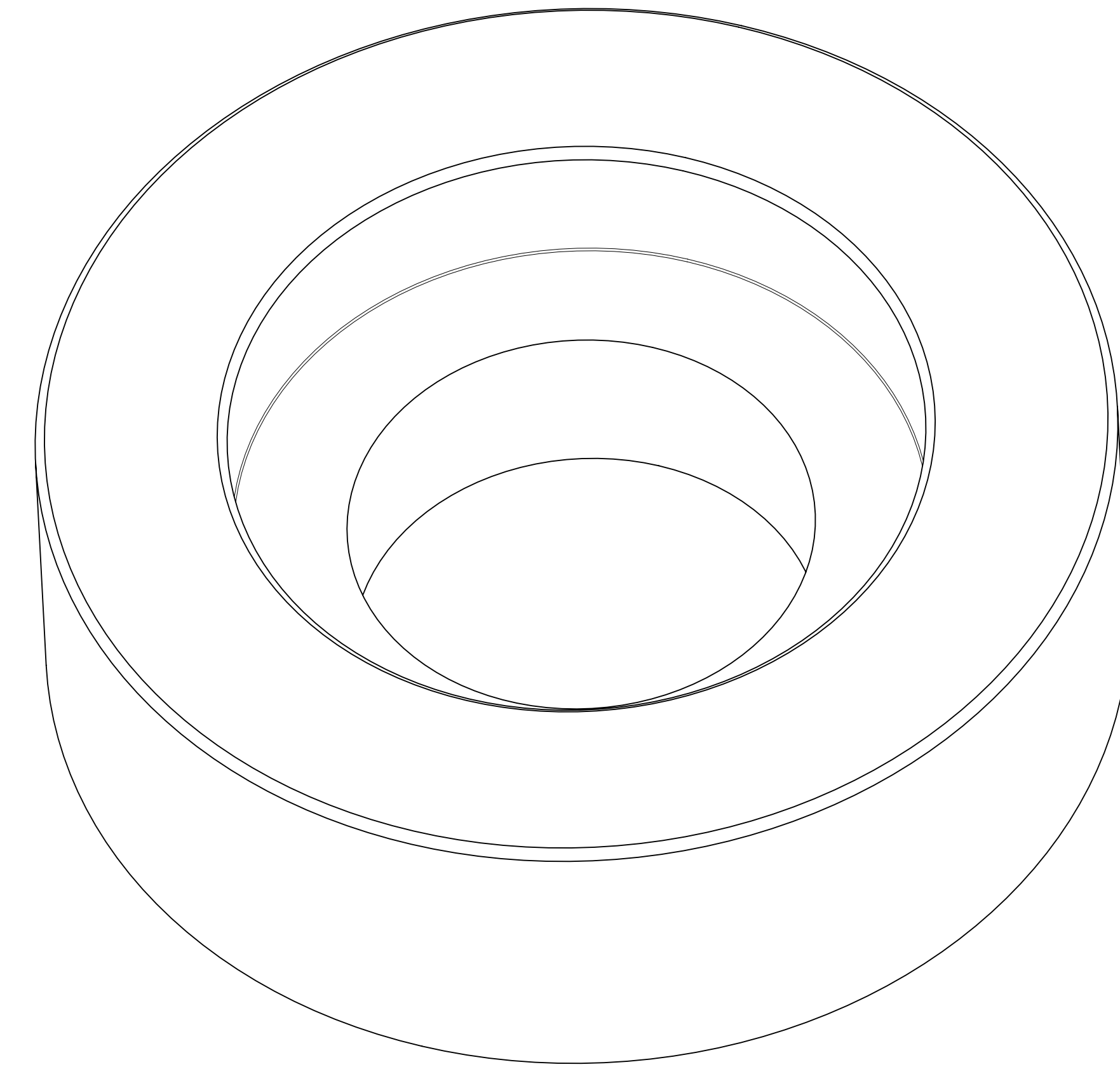
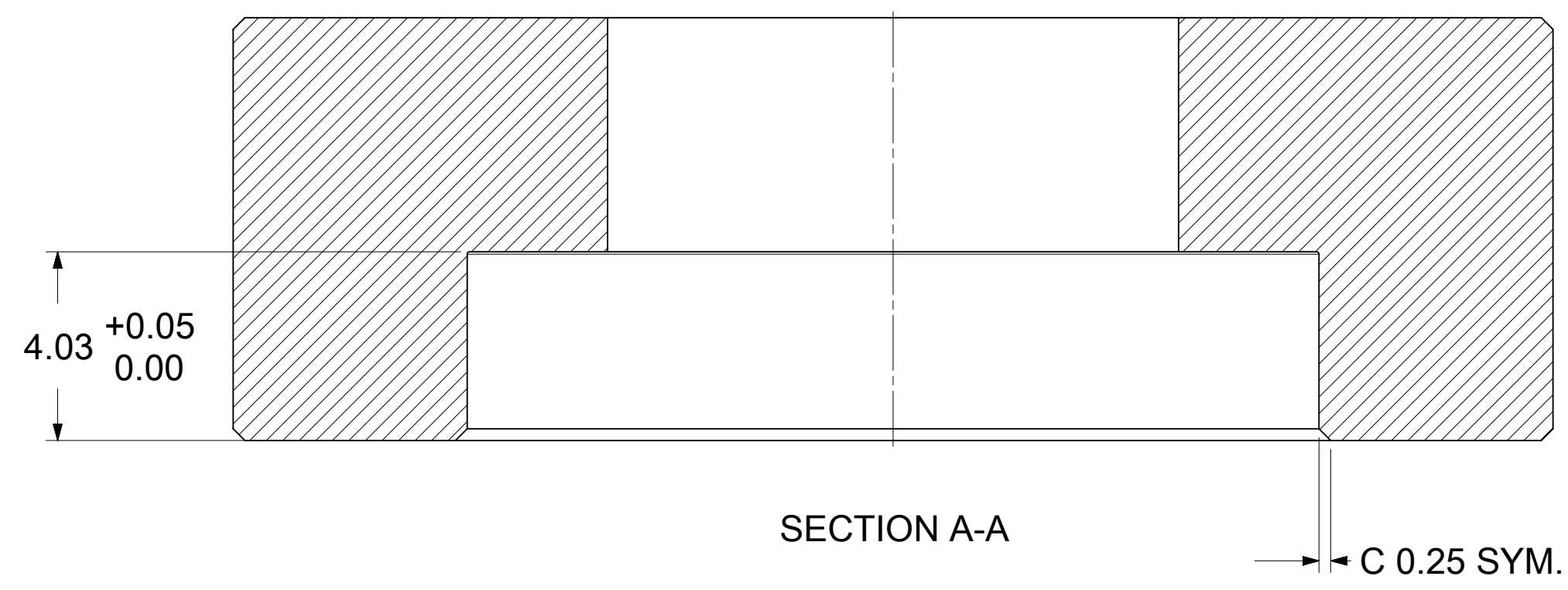
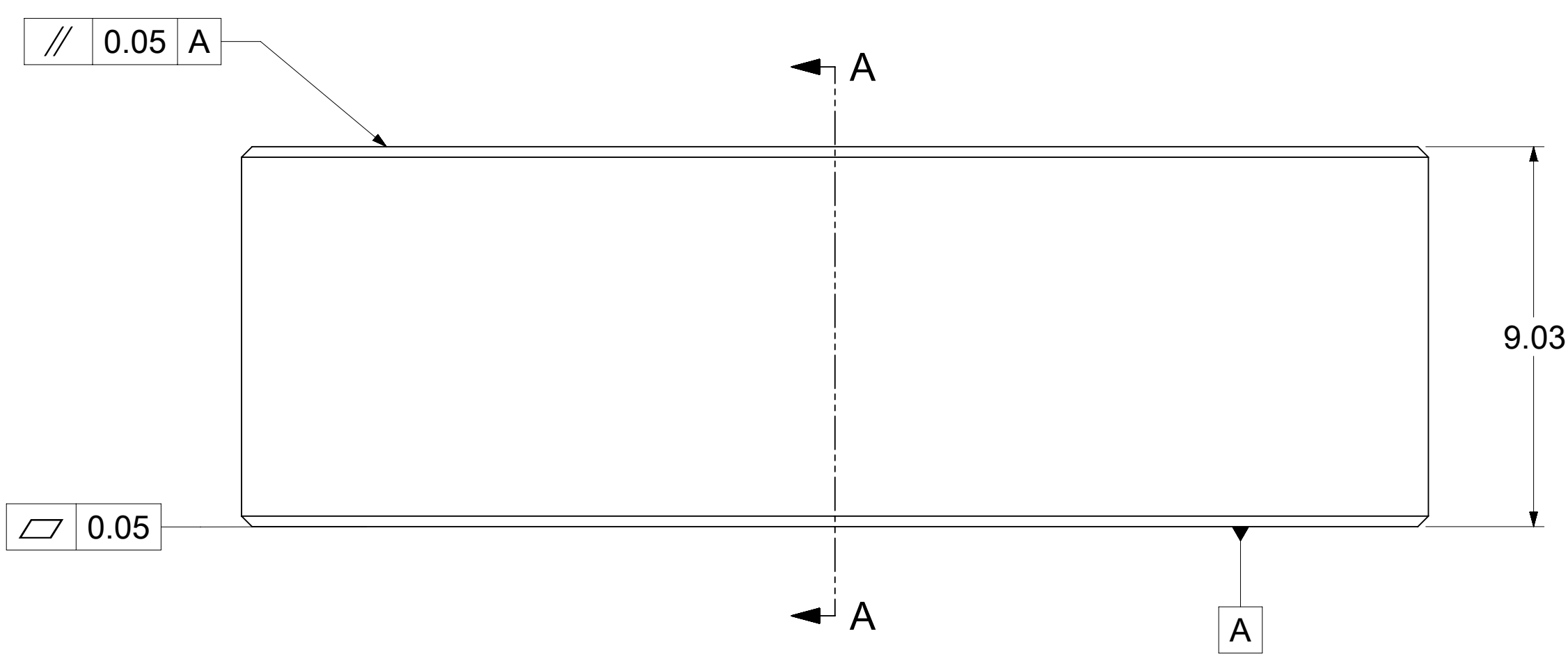


SECTION A-A

- NOTES:**
- MATERIALS:**
RETENTION CAP: STAINLESS STEEL
PICK AND PLACE CAP: LCP UL94, V-0 COLOR BLACK
BASE METAL: HIGH CONDUCTIVE COPPER ALLOY
PLATING ON CONTACTS: 0.75 MICRON MIN GOLD OVER
1.27 MICRON MIN NICKEL
PLATING ON BODY: 3.18 MICRON MIN SILVER OVER 1.27 MICRON MIN NICKEL
 - MATES WITH MOLEX 11MM MALE PIN:**
 - 11.0MM SMT MALE PIN DRAWING 213901-0000-SD, MIN. MATING DISTANCE 6.5MM
 - 11.0MM PRESS FIT MALE PIN DRAWING 213900-0000-SD, MIN. MATING DISTANCE 6.85MM
 - 11.0MM SCREW MOUNT MALE PIN DRAWING 213902-0000-SD, MIN. MATING DISTANCE 9.85MM
 - PRODUCT SPECIFICATION:** 21328800001-PS
 - APPLICATION SPECIFICATION:** 2138800001-AS
SEE APPLICATION SPEC FOR SOLDERING INFORMATION.
 - PACKAGING SPECIFICATION:** 2139520001-PK(TRAY)
 - SILVER COMPONENTS WILL BE SUPPLIED TARNISH FREE BUT MAY TARNISH OVER TIME.**
 - (B) DATECODE TO BE LASER WELDED APPROXIMATELY WHERE SHOWN USING DDYY FORMAT**

THIS DRAWING CONTAINS INFORMATION THAT IS PROPRIETARY TO MOLEX ELECTRONIC TECHNOLOGIES, LLC AND SHOULD NOT BE USED WITHOUT WRITTEN PERMISSION											
DIMENSION UNITS	SCALE	CURRENT REV DESC: SHORTENED PIN ASSEMBLY AT MATING PROFILE / UPDATED THE RECOMMENDED BUSBAR THICKNESS / ADDED NOTE 7				molex					
mm	NTS									11.0MM SENTRALITY TOP ENTRY PRESS-FIT STANDARD SOCKET IN TRAY	
GENERAL TOLERANCES (UNLESS SPECIFIED)						PRODUCT CUSTOMER DRAWING					
ANGULAR TOL	± 0.5°					DOCUMENT NUMBER					
4 PLACES	±	EC NO: 839833		2024/09/26		2137800001-SD		PSD 000 B			
3 PLACES	±	DRWN: SOURAJ		2025/12/01							
2 PLACES	± 0.15	CHK'D: MOHDSM6		2025/12/01		MATERIAL NUMBER		CUSTOMER			
1 PLACE	± 0.25	APPR: HTHYAGARAJ		2025/12/02							
0 PLACES	±	INITIAL REVISION:				2137800001		GENERAL MARKET			
DRAFT WHERE APPLICABLE MUST REMAIN WITHIN DIMENSIONS		DRWN: RLOW		2020/08/17						SHEET NUMBER	
		APPR: JJONIAK		2022/08/16							
		THIRD ANGLE PROJECTION		DRAWING		SERIES		MATERIAL NUMBER		CUSTOMER	
		D-SIZE		213780							

DOCUMENT STATUS	P1	RELEASE DATE	2025/12/02	07:20:32
-----------------	----	--------------	------------	----------



- NOTES:
 1. MATERIAL: STAINLESS STEEL
 2. BREAK ALL SHARP CORNERS AND EDGES
 3. THE TOOL SHOULD BE FABRICATED BY THE CUSTOMER

THIS DRAWING CONTAINS INFORMATION THAT IS PROPRIETARY TO MOLEX ELECTRONIC TECHNOLOGIES, LLC AND SHOULD NOT BE USED WITHOUT WRITTEN PERMISSION															
DIMENSION UNITS mm		SCALE 8:1		CURRENT REV DESC: UPDATED THE NOTES											
GENERAL TOLERANCES (UNLESS SPECIFIED)				molex CENTRALITY APPLICATION TOOLING FOR 11.0MM STANDARD SOCKET PRODUCT CUSTOMER DRAWING											
ANGULAR TOL		± 0.5°													
4 PLACES		±													
3 PLACES		±													
2 PLACES		± 0.05													
1 PLACE		± 0.1		EC NO: 813784 DRWN: SOURAJ 2024/12/05 CHK'D: SOURAJ 2025/02/25 APPR: HTHYAGARAJ 2025/02/26				DOCUMENT NUMBER 2192590101-SD							
0 PLACES		±		INITIAL REVISION: DRWN: SOURAJ 2023/04/04 APPR: KPRASAD 2023/12/19				DOC TYPE PSD		DOC PART 000		REVISION A1			
DRAFT WHERE APPLICABLE MUST REMAIN WITHIN DIMENSIONS				THIRD ANGLE PROJECTION		DRAWING D-SIZE		SERIES 219259		MATERIAL NUMBER 2192590101		CUSTOMER GENERAL MARKET		SHEET NUMBER 1 OF 1	

DOCUMENT STATUS	P1	RELEASE DATE	2025/02/26	03:40:03
-----------------	----	--------------	------------	----------