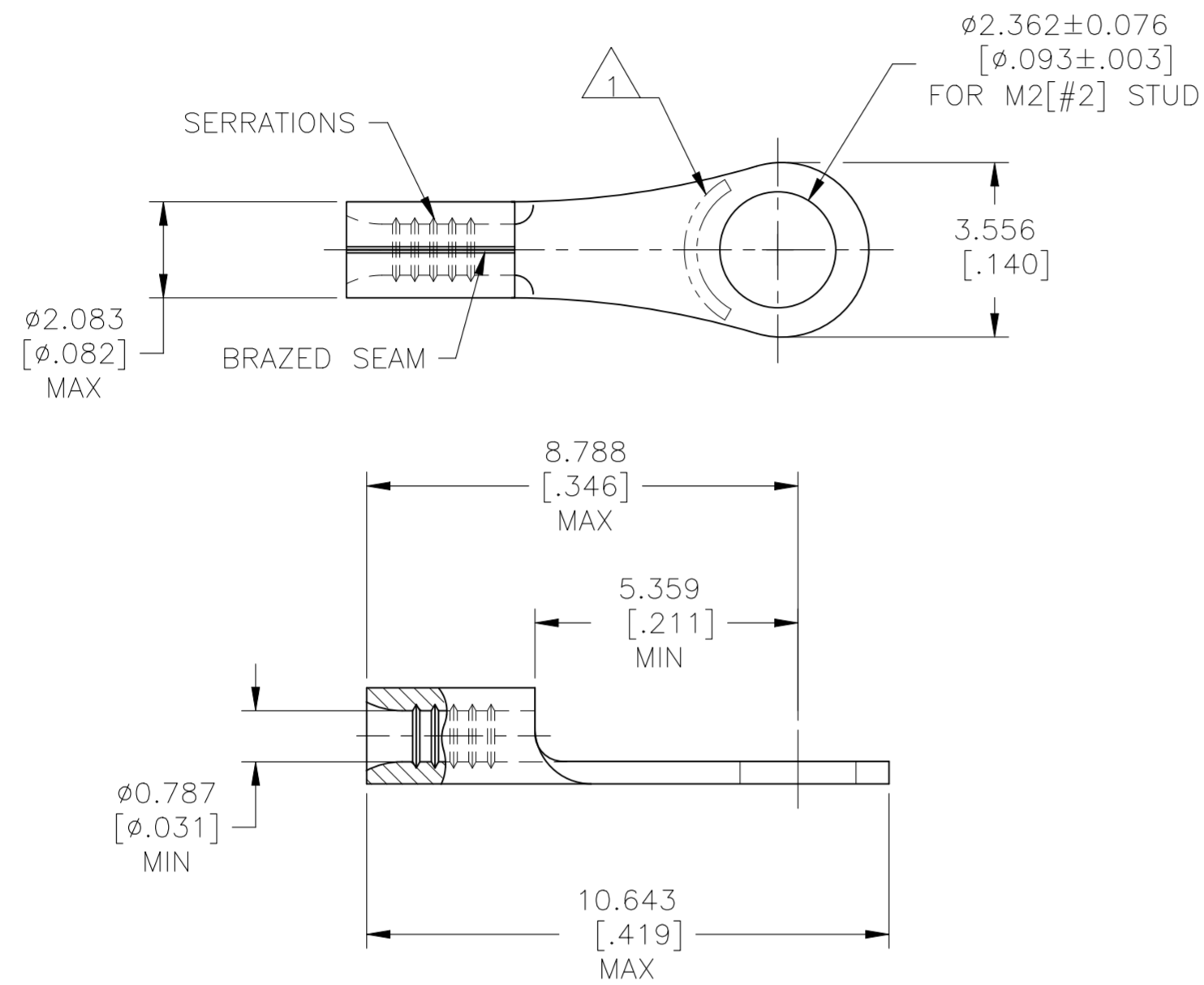


REVISIONS				
P	LTR	DESCRIPTION	DATE	APVD
H4		ECR-25-256732	18SEP2025	LP MFP

AMP
WIRE RANGE

26-22 AWG
SOLID OR STRANDED



- △1 STAMP AMP APPROX AS SHOWN
- △2 TIN PLATE 0.00254[.000100] MIN THK PER MIL-T-10727
- △3 GOLD PLATE 0.00254[.000100] MIN THK PER MIL-G-45204 OVER NICKEL PLATE 0.00127[.000050] MIN THK PER QQ-N-290
- △4 CLEANED, UNPLATED
- 5 MATERIAL THICKNESS 0.457 +/- 0.051 (.018 +/- .002)

**AMP INCORPORATED
CUSTOMER SERVICE SYSTEMS**

MAX RECOMMENDED OPERATING TEMPERATURE:
170° C[338°F] MAX

FOR ADDITIONAL PRODUCT INFORMATION OR COPIES OF DRAWINGS AND TECHNICAL DOCUMENTS

PRODUCT INFORMATION CENTER
1-800-522-6752

VOLTAGE RATING:
NOT APPLICABLE

FOR APPLICATION TOOLING INFORMATION

TOOLING ASSISTANCE CENTER
1-800-722-1111

WIRE CROSS SECTIONAL AREA RANGE:
0.1-0.41mm²[202-810] CIR MILS
SOLID OR STRANDED

FOR ORDER ENTRY

1-800-526-5142

THIS DRAWING IS A CONTROLLED DOCUMENT FOR AMP INCORPORATED. IT IS SUBJECT TO CHANGE AND THE CONTROLLING ENGINEERING ORGANIZATION SHOULD BE CONTACTED FOR THE LATEST REVISION.

1000	LOOSE PIECE	△4	50334-3
1000	LOOSE PIECE	△3	50334-2
1000	LOOSE PIECE	△2	50334
QTY	PACKAGE TYPE	FINISH	PART NUMBER

THIS DRAWING IS A CONTROLLED DOCUMENT.		DWN TA BRINKMAN 3-9-93	TE TE Connectivity	
DIMENSIONS: mm [INCHES]		CHK DA PATTERSON 3-9-93		
TOLERANCES UNLESS OTHERWISE SPECIFIED:		APVD -	NAME	
0 PLC ± -		PRODUCT SPEC -	TERMINAL, RING TONGUE, SOLISTRAND 26-22 AWG	
1 PLC ± -		APPLICATION SPEC -	SIZE A2	CAGE CODE 00779
2 PLC ± -		WEIGHT -	DRAWING NO C=50334	RESTRICTED TO -
3 PLC ± 0.127[.005]		CUSTOMER DRAWING		
4 PLC ± -		SCALE 8:1	SHEET 1 OF 1	REV H4
ANGLES ± -				
MATERIAL COPPER PER ASTM B-152	FINISH ANNEALED			