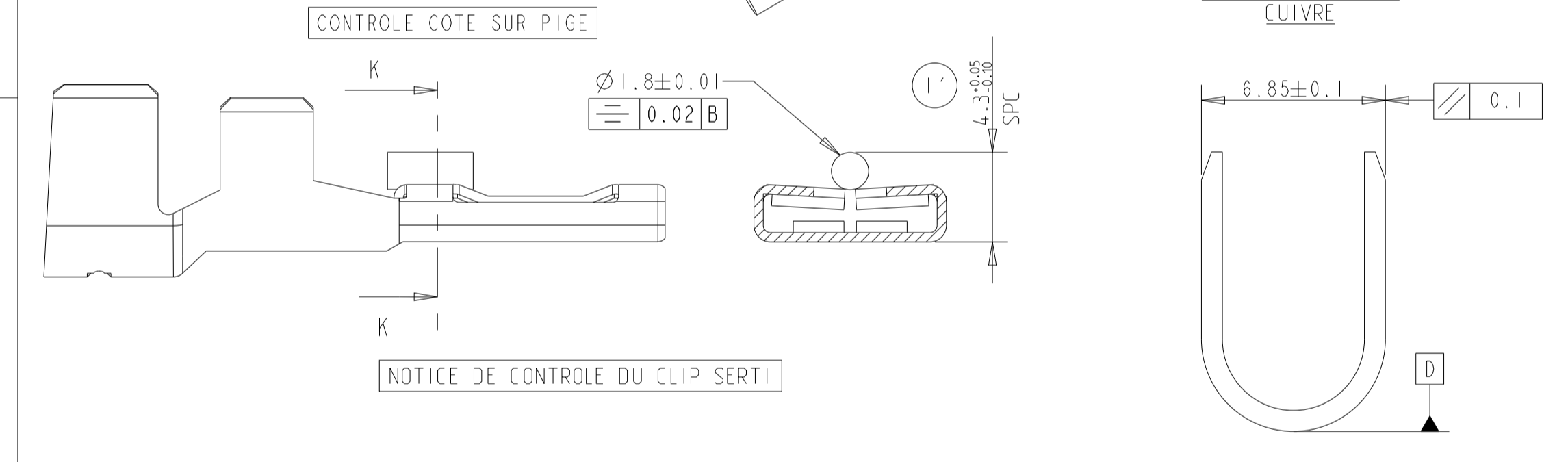
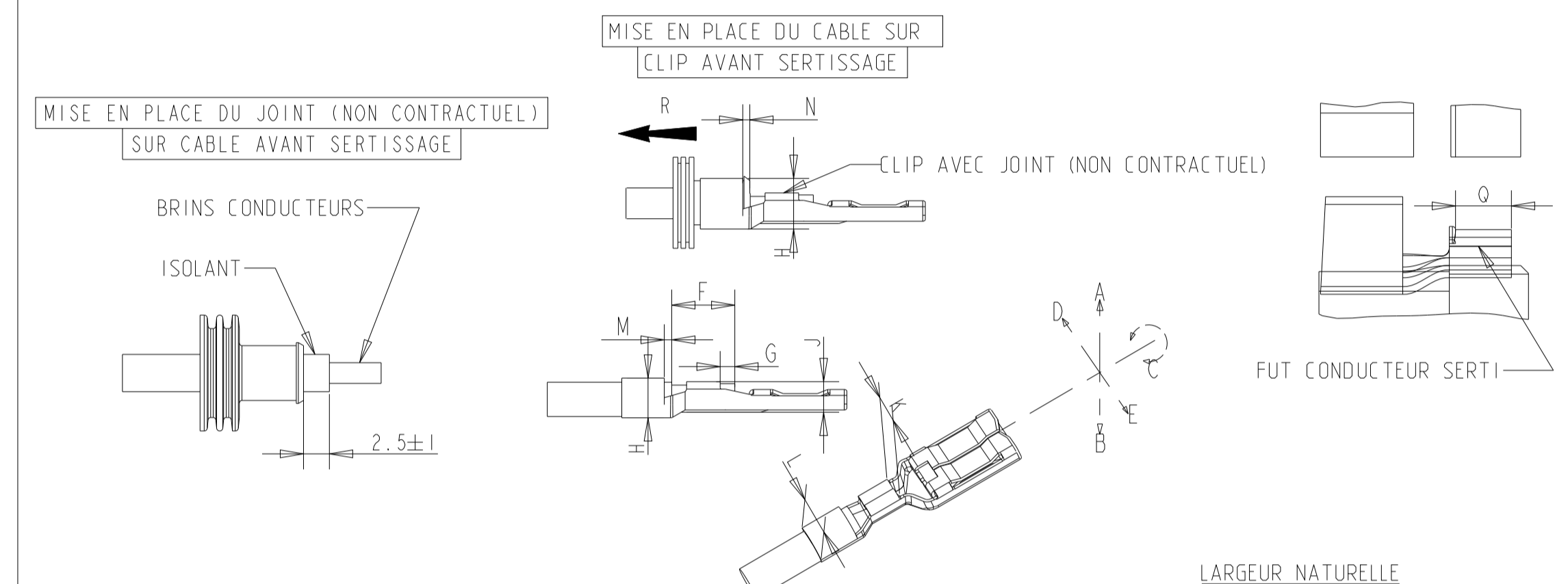
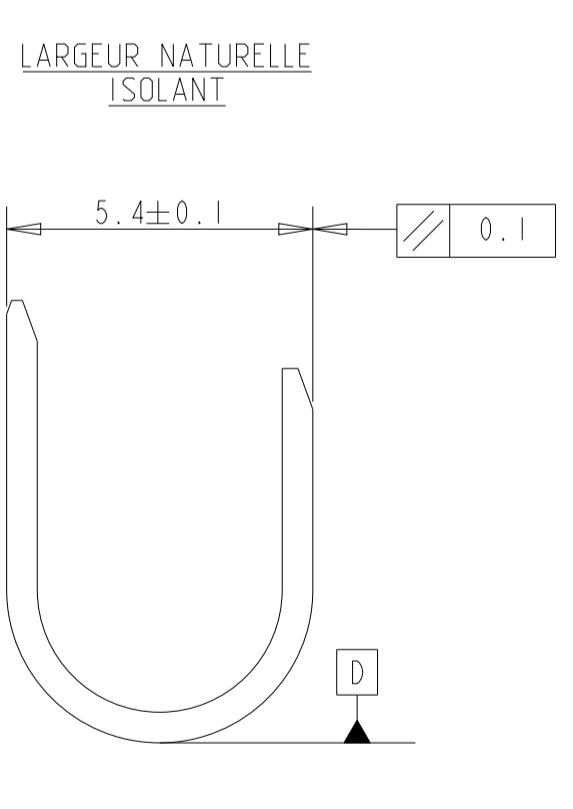
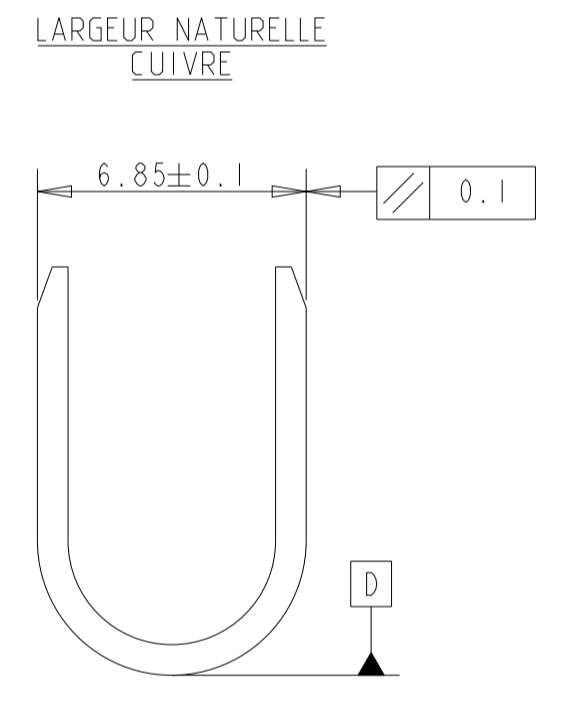


PARAMETRES DE SERTISSAGE

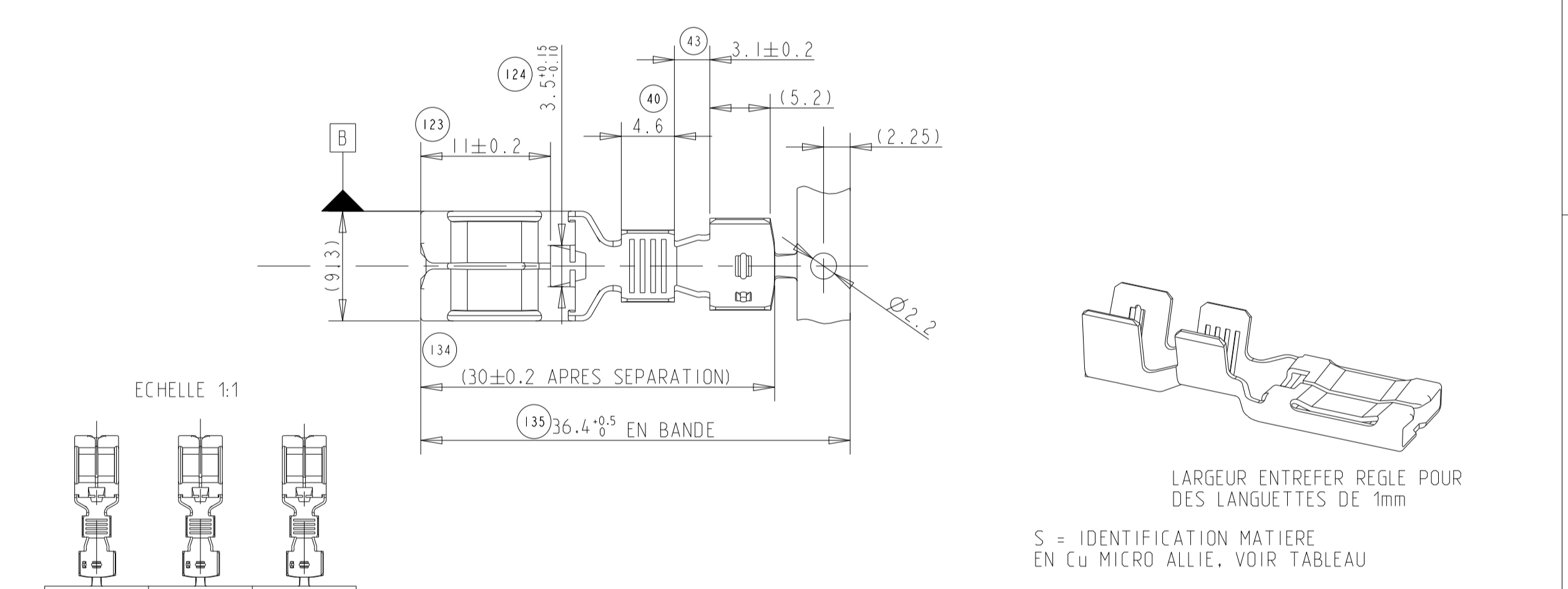
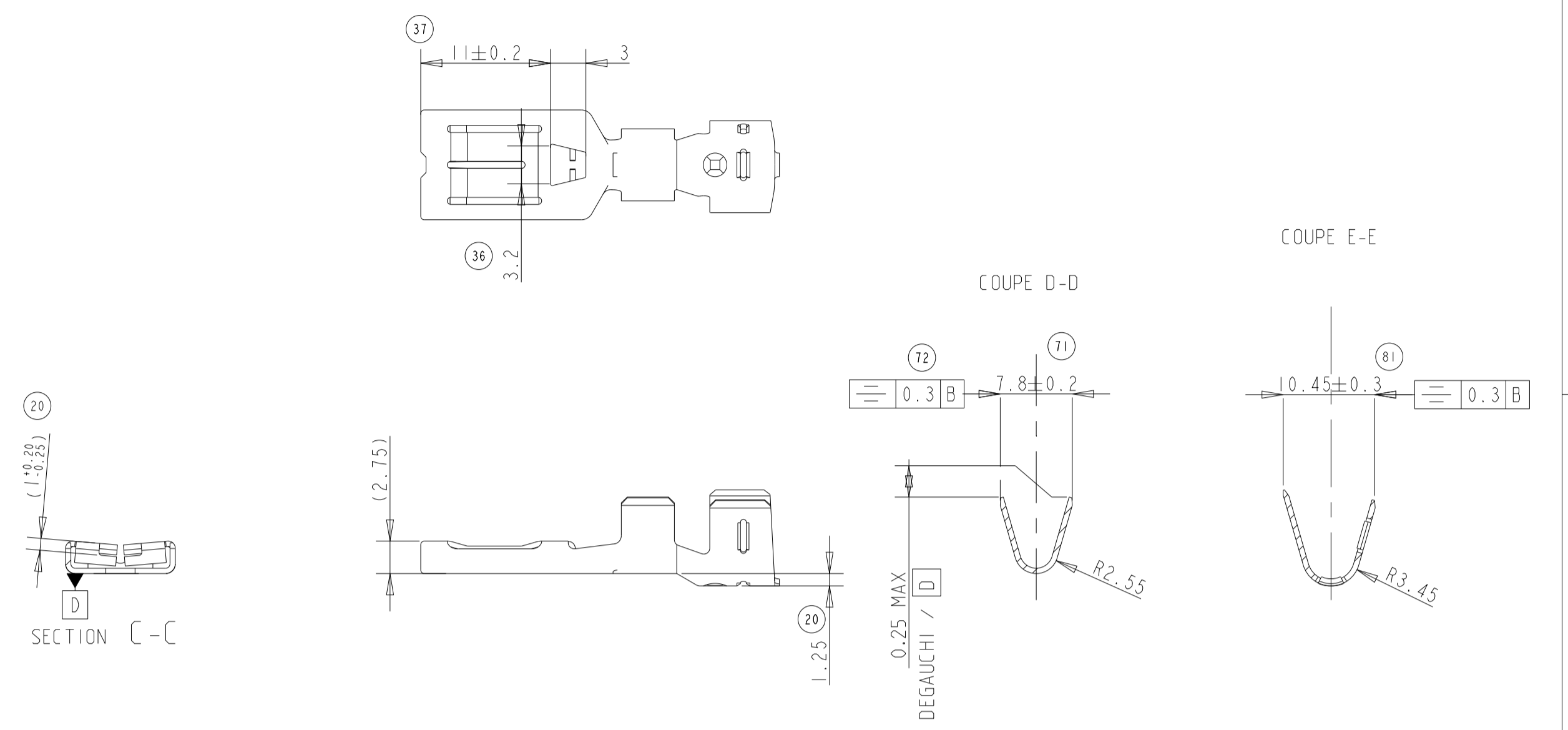
SERTISSAGE DU CONDUCTEUR					FRETTAGE DE L'ISOLANT						
TYPE DE FIL	REELLE mm <sup>2</sup>	LARGEUR K ± 0.1	HAUTEUR J ± 0.05	TRACTION (N)	LONGUEUR D'AILE : 17.5 EPAISSEUR METAL : 0.45			LONGUEUR D'AILE : 23.5 EPAISSEUR METAL : 0.45			
					TYPE DE FIL	Ø ISOLANT	SURFACE A FRETTER	SANS JOINT (PAR RECouvreMENT)	AVEC JOINT OU SUPER JOINT NGI		
7T3 - 7R3S	7.42	5.60	3.20	>630	7T3 - 7R3S	4.9	18.85	7	5.95	8.02	7.10
10T3 - 10R3S	10.18	5.64	3.52	>640	10T3 - 10R3S	5.9	27.33	7.05	6.75	8.22	7.80
7NI	7.26	5.58	3.18	>630	7NI	5.1 ± 0.2	20.42	7	5.85		
10NI	10.05	5.61	3.52	>640	10NI	6 ± 0.2	28.27	7.05	6.75		



CARACTERISTIQUES A VERIFIER		VALEURS A MESURER	REPERE
DEFORMATION APRES SERTISSAGE	FLEXION VERS LE HAUT	2°	A
	FLEXION VERS LE BAS	2°	B
	TORSION	5°	C
DEFORMATION SUIVANT L'AXE DE LA PIECE		2°	D - E
LONGUEUR DE DENUDAGE		(7)	F
DEPASSEMENT DU FIL		0.3 <sup>+0.8</sup> <sub>0</sub>	G
DEPASSEMENT DE L'ISOLANT		1.8 ± 0.5	M
DEPASSEMENT DU JOINT		1.8 ± 0.5	N
TEMOIN DE DECOUPE (après sertissage)		0.4 MAXI	P
LONGUEUR EFFECTIVE DE SERTISSAGE MINI (après remontage)		3.7	Q



REVISIONS					
P	LTN	DESCRIPTION	DATE	DMN	APVD
G		DIMENSIONS UPDATED	26NOV2025	SB	MG



NOTA:  
- (X) = POUR INFORMATION

REFERENCE PRODUIT	REF. TE
CLIP 8 NG1 7 A 10 mm <sup>2</sup>	1544228-1

PRODUIT ASSOCIE	REFERENCE JOINTS	REF. TE
	JOINT UNIFILAIRE 7 A 10 mm <sup>2</sup>	1544316-2

THIS DRAWING IS A CONTROLLED DOCUMENT.

DIMENSIONS: mm	TOLERANCES UNLESS OTHERWISE SPECIFIED: D: PLC ± P: PLC ±0.1 S: PLC ± R: PLC ± ANGLES FINISH ±2°	DMN: M. BOUMAHDI 19MAY2026 CHK: M. BOUMAHDI 19MAY2026 APVD: M. GUERIN 19MAY2026	NAME: CLIP 8 mm NGI CAPACITE 7 A 10 mm <sup>2</sup>
MATERIAL: Cu micro allie SM 182	WEIGHT: 1.8 g	SIZE: A   00779   C=1544228	RESTRICTED TO: -
CUSTOMER DRAWING	SCALE: 5:2	SHEET: 1 OF 1	REV: G

TE Connectivity