

THIS DRAWING CONTAINS INFORMATION THAT IS PROPRIETARY TO MOLEX ELECTRONIC TECHNOLOGIES, LLC AND SHOULD NOT BE USED WITHOUT WRITTEN PERMISSION									
DIMENSION UNITS <b>IN/MM</b>		SCALE <b>2:1</b>		CURRENT REV DESC: REMOVED OBSOLETE PART NUMBER AS PER PCN #518060					
GENERAL TOLERANCES (UNLESS SPECIFIED)				STATUS: Production DRWN: Pranav Arunkumar 2026-04-24 CHK'D: Ganesh Rao B 2026-04-28 APPR: Gurunandan GA 2026-04-28 INITIAL REVISION: DRWN: KBW 1989/01/03 APPR: FSMITH 2014/11/13					
		MM	INCH						
4 PLACES	±								
3 PLACES	±	0.0100							
2 PLACES	±	0.250	0.014						
1 PLACE	±	0.35							
0 PLACES	±								
ANGULAR TOL		± 2'		THIRD ANGLE PROJECTION		DRAWING		SERIES	
DRAFT WHERE APPLICABLE MUST REMAIN WITHIN DIMENSIONS						C-SIZE		1360	
				DOCUMENT NUMBER		DOC TYPE		DOC PART	
				SD-1360-X		PSD		001	
				MATERIAL NUMBER		CUSTOMER		REVISION	
				SEE CHART		GENERAL MARKET		AE5	
				SHEET NUMBER				1 OF 2	

**molex**

.093/(2.36) HOUSINGS  
PLUG AND RECEPTACLE 12 CKT, .198/(5.03)CTR.

PRODUCT CUSTOMER DRAWING

SD-1360-X PSD 001 AE5

GENERAL MARKET

1 OF 2

RECEPTACLE

ORDER NO	ENG NO
03-09-1121	I360-R <sup>6</sup>
03-09-1125	I360-R2 <sup>6</sup>
03-09-6121	I360-RBK
03-09-6125	I360-R2BK
03-09-6126	I360-R3BK

LEGEND: PLUG

1360-P\*\*\*

P = PLUG

BLANK = WITHOUT EARS  
I = WITH MOUNTING EARS

COLOR:

BLANK = NATURAL COLOR  
AM = AMBER BK = BLACK BU = BLUE  
BN = BROWN GY = GRAY GN = GREEN  
OR = ORANGE RD = RED YW = YELLOW

LEGEND: RECEPTACLE

1360-R\*\*\*

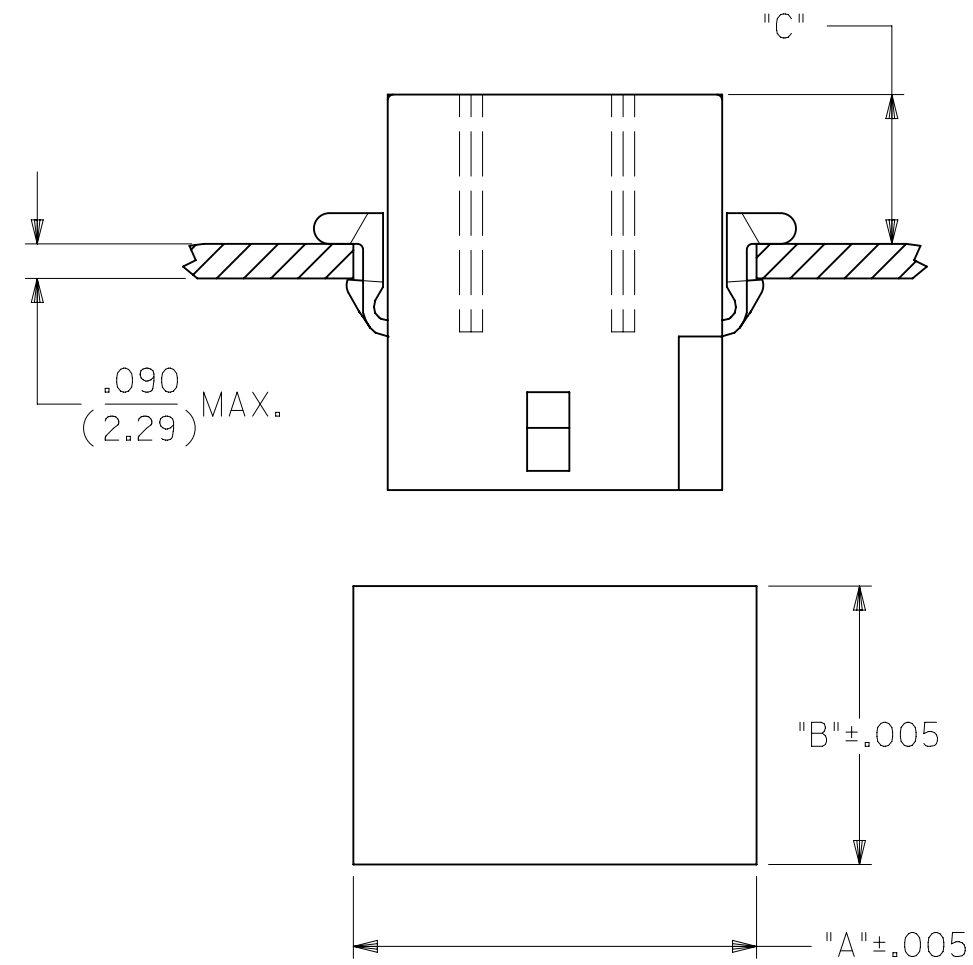
R = RECEPTACLE

OPTION	PREBENT EARS	LOCKING RAMP
BLANK	X	
1		
2	X	X
3		X

X = PRESENT

COLOR:

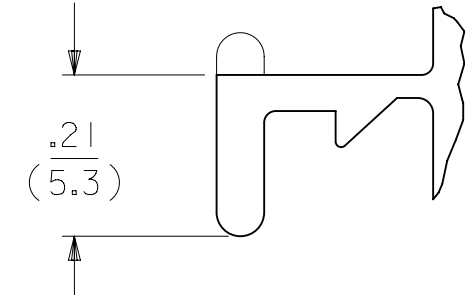
BLANK = NATURAL COLOR  
AM = AMBER BK = BLACK BU = BLUE  
BN = BROWN GY = GRAY GN = GREEN  
OR = ORANGE RD = RED YW = YELLOW



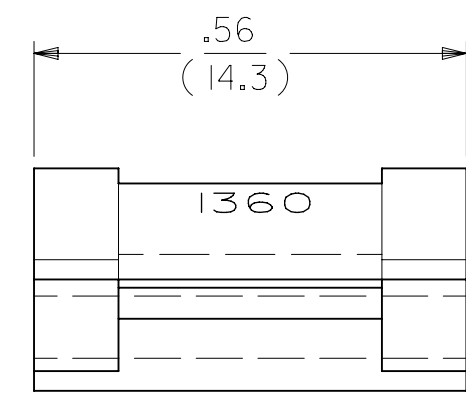
RECOMMENDED PANEL OPENING

HOUSING	DIM. "A"	DIM. "B"	"C" PREBENT EAR	"C" STANDARD EAR
PLUG	1.155/(29.34)	.760/(19.30)	.40/(10.2)	.36/(9.1)
RECEPT.	1.050/(26.67)	.725/(18.42)	.41/(10.4)	.37/(9.4)

- NOTES:
- MATERIAL: NYLON TYPE 6/6, UL94V-2
  - FINISH: N/A
  - PRODUCT SPECIFICATION: PS-02-09, PS-43660-9999
  - PACKAGING SPECIFICATION: PK-1360-001
  - <sup>5</sup> CIRCUIT I.D. NUMBERS ON SIDE OF HOUSING APPEAR ON PARTS FROM TOOLS BUILT AFTER 10/22/91
  - <sup>6</sup> WHERE DENOTED IN CHART, TOOLS ARE BUILT WITH PREBENT MOUNTING EARS PER DETAIL B AND SUPERSEDE ALL TOOLS PREVIOUSLY BUILT WITH THE STANDARD EARS.
  - PARTS CONFORM TO CLASS B REQUIREMENTS OF COSMETIC SPECIFICATION PS-45499-002.



DETAIL A  
.093/(2.36) STANDARD MOUNTING EAR  
(SCALE 4:1)



DETAIL B  
.093/(2.36) PREBENT MOUNTING EAR  
(SCALE 4:1)

THIS DRAWING CONTAINS INFORMATION THAT IS PROPRIETARY TO MOLEX ELECTRONIC TECHNOLOGIES, LLC AND SHOULD NOT BE USED WITHOUT WRITTEN PERMISSION

DIMENSION UNITS <b>IN/MM</b>	SCALE <b>2:1</b>	CURRENT REV DESC: REMOVED OBSOLETE PART NUMBER AS PER PCN #518060	<b>molex</b>			
GENERAL TOLERANCES (UNLESS SPECIFIED)		STATUS: Production				.093/(2.36) HOUSINGS PLUG AND RECEPTACLE 12 CKT, .198/(5.03)CTR.
4 PLACES ±	±	DRWN: Pranav Arunkumar 2026-04-24	PRODUCT CUSTOMER DRAWING			
3 PLACES ±	± 0.0100	CHK'D: Ganesh Rao B 2026-04-28	DOCUMENT NUMBER	DOC TYPE	DOC PART	REVISION
2 PLACES ±	0.250 ± 0.014	APPR: Gurunandan GA 2026-04-28	SD-1360-X	PSD	001	AE5
1 PLACE ±	0.35 ±	INITIAL REVISION:	MATERIAL NUMBER	CUSTOMER	SHEET NUMBER	
0 PLACES ±	±	DRWN: KBW 1989/01/03	SEE CHART	GENERAL MARKET	2 OF 2	
ANGULAR TOL ±	2'	APPR: FSMITH 2014/11/13				
DRAFT WHERE APPLICABLE MUST REMAIN WITHIN DIMENSIONS	THIRD ANGLE PROJECTION	DRAWING	SERIES			
		<b>C-SIZE</b>	<b>1360</b>			