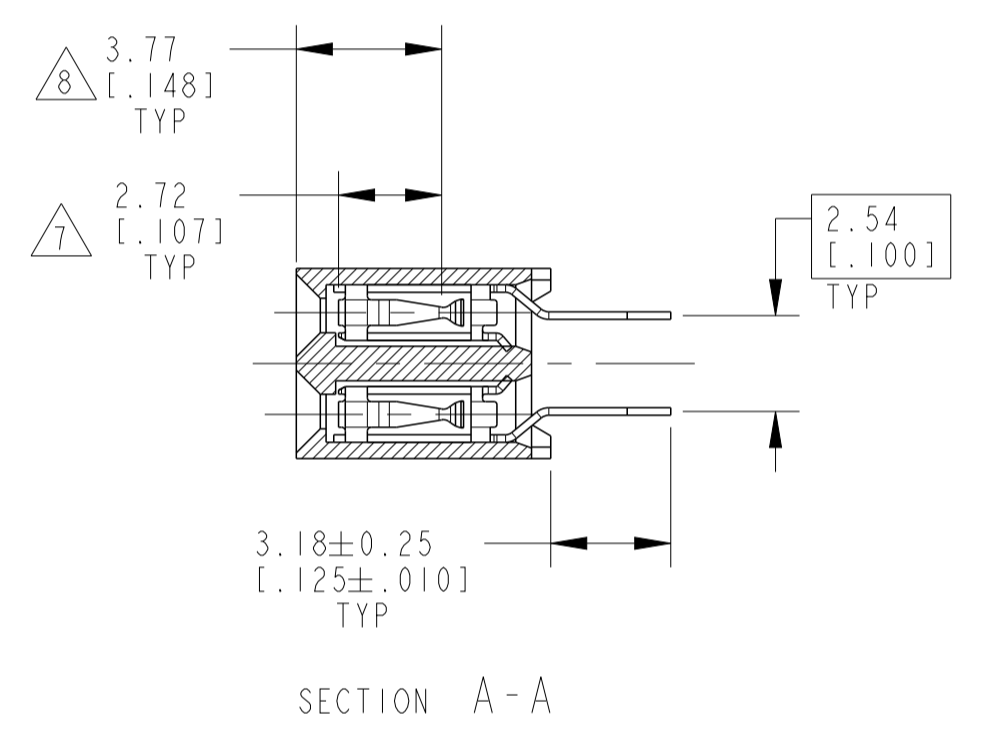
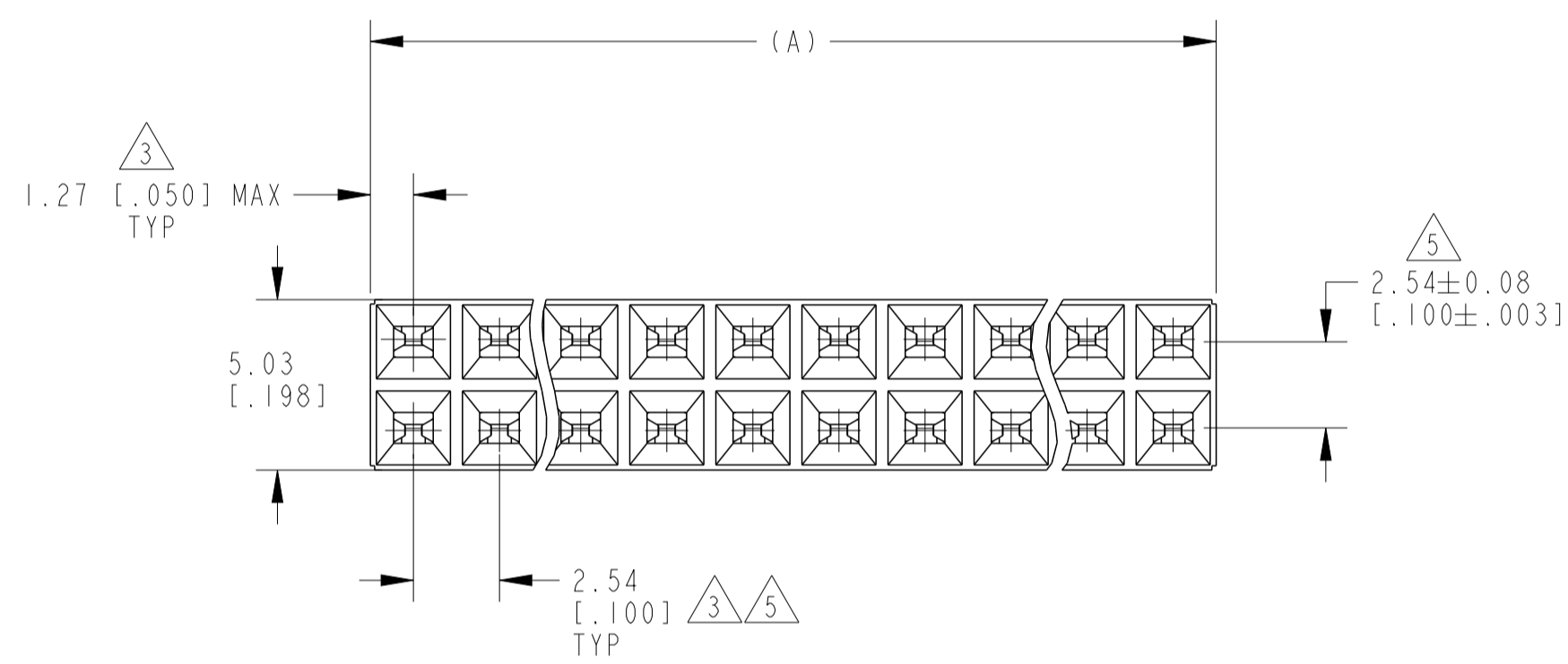
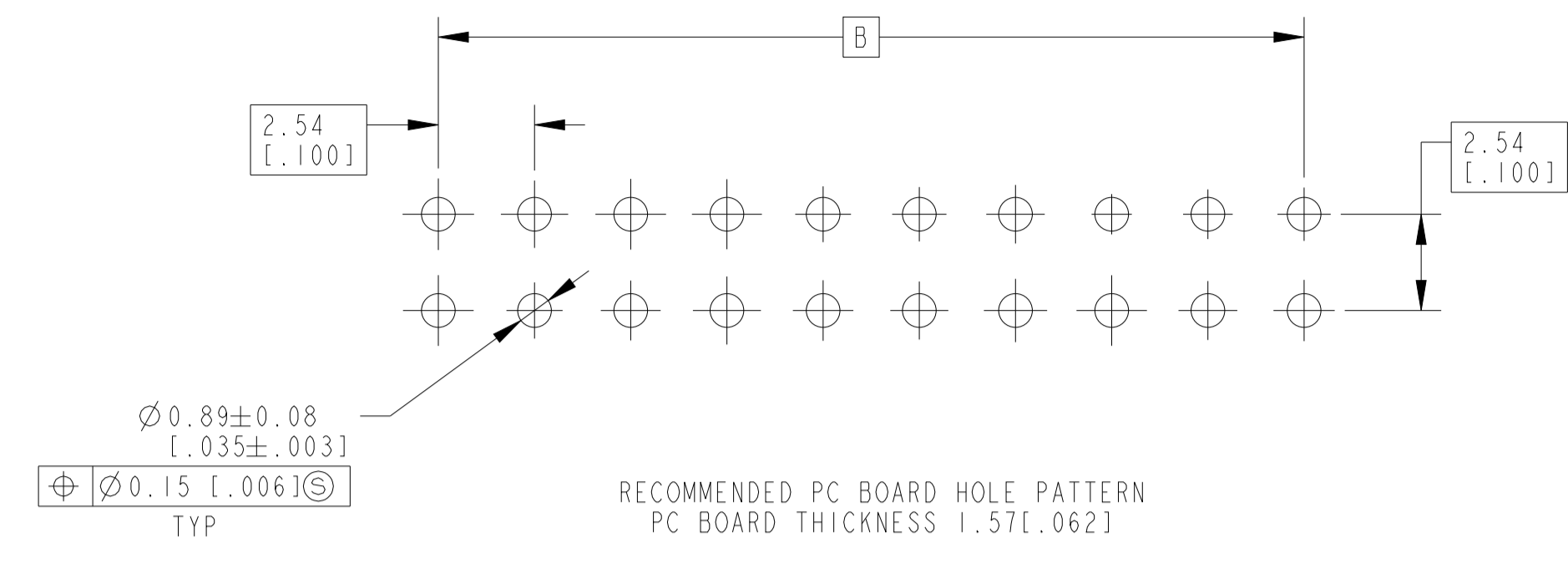
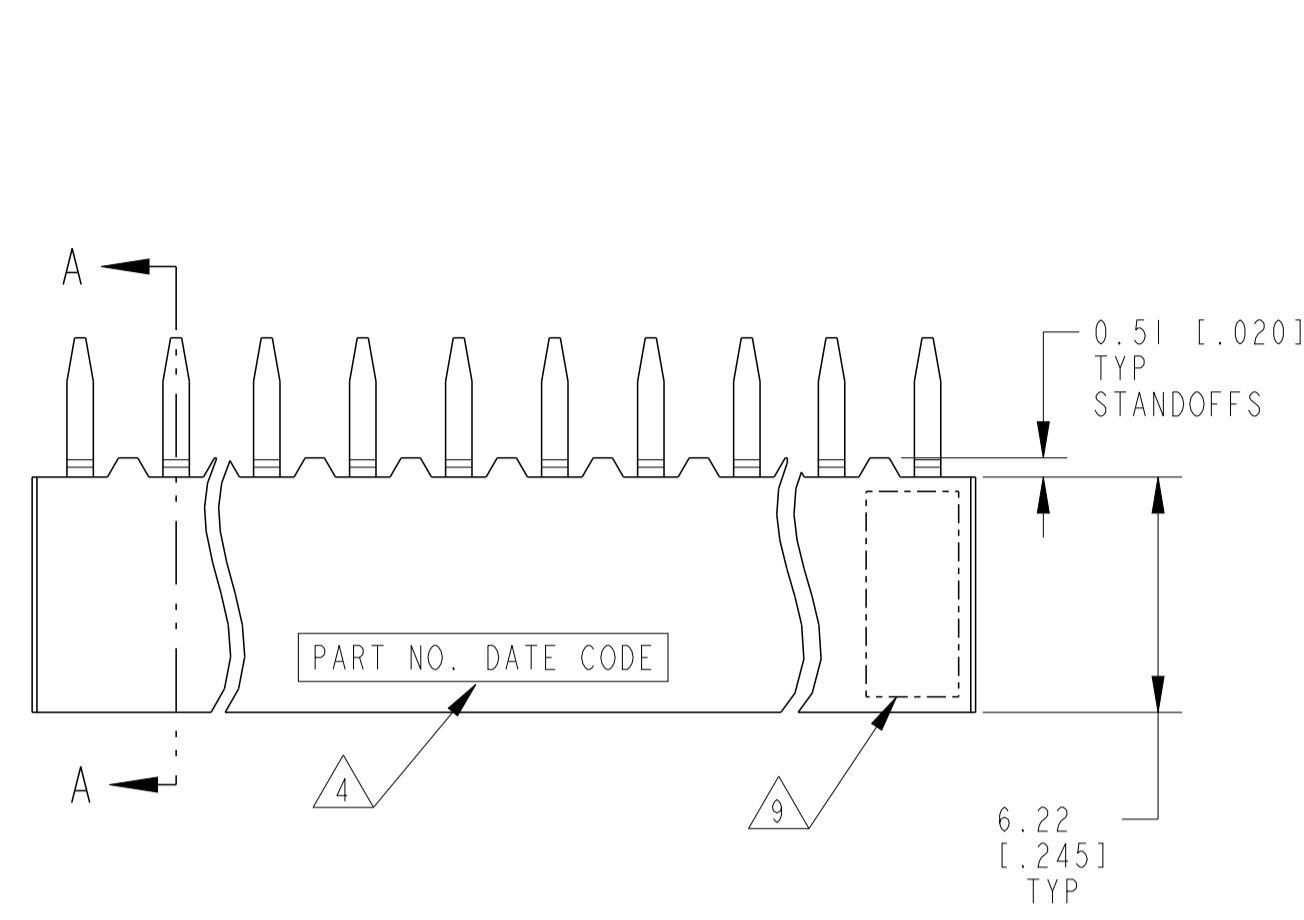


REVISIONS				
P	LTN	DESCRIPTION	DATE	OWN APVD
R		RESIN SUPPLIER CHANGE FOR THE HOUSING	03DEC2021	SCB KJK
S		RIB FEATURE IS ADDED IN THE STANDOFF FEATURE	18JUN2025	RS GVP



- △ HOUSING: FLAME RETARDANT, GLASS FILLED, POLYESTER, COLOR: BLACK.
CONTACT: PHOSPHOR BRONZE
- △ CONTACT: DUPLEX PLATED 0.00025[.000010] MIN GOLD IN CONTACT AREA, 0.00381-0.00762[.000150 -.000300] BRIGHT TIN-LEAD ON LEADS, ALL OVER 0.00127[.000050] NICKEL.
- △ THESE DIMENSIONS PERTAIN TO CAVITY CENTERLINES ONLY - NOT TO CONTACT LOCATIONS
- △ MARK PART NUMBER AND DATE CODE ARE IN APPROXIMATE LOCATION SHOWN, EITHER SIDE.
- △ TOLERANCE IS NON-CUMULATIVE.
- △ 2 POSITION DATE CODE IS MARKED OPPOSITE SIDE OF TE CONNECTIVITY LOGO.
- △ POINT-OF-MEASUREMENT DIMENSION FOR PLATING THICKNESS (INSIDE CONTACT BEAM).
- △ POINT-OF-CONTACT DIMENSION.
- △ TE CONNECTIVITY TRADEMARK AND CSA LOGO ARE MOLDED INTO HOUSING, THIS LOCATION.
- △ NO PART NUMBER MARKING REQUIRED FOR THIS PART.
- △ CONTACT: DUPLEX PLATED 0.00025[.000010] MIN GOLD IN CONTACT AREA, 0.00381-0.00762[.000150 -.000300] MATTE TIN ON LEADS, ALL OVER 0.00127[.000050] MIN NICKEL
- △ ROHS 2002/95/EC COMPLIANT
- △ OBSOLETE

FINISH	B	A	NO OF POSN	PART NUMBER
△	△	△	78	9-535598-0
△	△	△	76	8-535598-9
△	△	△	74	8-535598-8
△	△	△	72	8-535598-7
△	△	△	70	8-535598-6
△	△	△	68	8-535598-5
△	△	△	66	8-535598-4
△	△	△	64	8-535598-3
△	△	△	62	8-535598-2
△	△	△	58	8-535598-1
△	△	△	56	8-535598-0
△	△	△	54	7-535598-9
△	△	△	52	7-535598-8
△	△	△	48	7-535598-7
△	△	△	46	7-535598-6
△	△	△	44	7-535598-5
△	△	△	42	7-535598-4
△	△	△	80	7-535598-3
△	△	△	60	7-535598-2
△	△	△	50	7-535598-1
△	△	△	40	7-535598-0
△	△	△	38	6-535598-9
△	△	△	36	6-535598-8
△	△	△	34	6-535598-7
△	△	△	32	6-535598-6
△	△	△	30	6-535598-5
△	△	△	28	6-535598-4
△	△	△	26	6-535598-3
△	△	△	24	6-535598-2
△	△	△	22	6-535598-1
△	△	△	20	6-535598-0
△	△	△	18	5-535598-9
△	△	△	16	5-535598-8
△	△	△	12	5-535598-7
△	△	△	10	5-535598-6
△	△	△	8	5-535598-5
△	△	△	6	5-535598-4
△	△	△	4	5-535598-3
△	△	△	2	5-535598-2
△	△	△	14	5-535598-1
△	△	△	78	4-535598-0
△	△	△	76	3-535598-9
△	△	△	74	3-535598-8
△	△	△	72	3-535598-7
△	△	△	70	3-535598-6
△	△	△	68	3-535598-5
△	△	△	66	3-535598-4
△	△	△	64	3-535598-3
△	△	△	62	3-535598-2
△	△	△	58	3-535598-1
△	△	△	56	3-535598-0
△	△	△	54	2-535598-9
△	△	△	52	2-535598-8
△	△	△	48	2-535598-7
△	△	△	46	2-535598-6
△	△	△	44	2-535598-5
△	△	△	42	2-535598-4
△	△	△	80	2-535598-3
△	△	△	60	2-535598-2
△	△	△	50	2-535598-1
△	△	△	40	2-535598-0
△	△	△	38	1-535598-9
△	△	△	36	1-535598-8
△	△	△	34	1-535598-7
△	△	△	32	1-535598-6
△	△	△	30	1-535598-5
△	△	△	28	1-535598-4
△	△	△	26	1-535598-3
△	△	△	24	1-535598-2
△	△	△	22	1-535598-1
△	△	△	20	1-535598-0
△	△	△	18	535598-9
△	△	△	16	535598-8
△	△	△	12	535598-7
△	△	△	10	535598-6
△	△	△	8	535598-5
△	△	△	6	535598-4
△	△	△	4	535598-3
△	△	△	2	535598-2
△	△	△	14	535598-1

SUPERSEDED BY 7-535598-3

THIS DRAWING IS A CONTROLLED DOCUMENT. DWG: M. BINNER 06NOV02
 CHK: J. OLSON 06NOV02
 APVD: J. OLSON 06NOV02

DIMENSIONS: mm [INCHES]
 TOLERANCES UNLESS OTHERWISE SPECIFIED:
 0 PLC ±
 1 PLC ±0.131(.005)
 2 PLC ±
 3 PLC ±
 4 PLC ±
 ANGLES ±
 FINISH SEE TABLE

MATERIAL: △

TE Connectivity
 RCPT ASSY, MOD IV, DBL-ROW, DOUBLE ROW, DUAL ENTRY, .100X.100CL, VERTICAL MOUNT, AMPMODU

SIZE: 114-25018
 WEIGHT: -
 CUSTOMER DRAWING

SCALE: 5:1 SHEET 1 OF 1 REV S