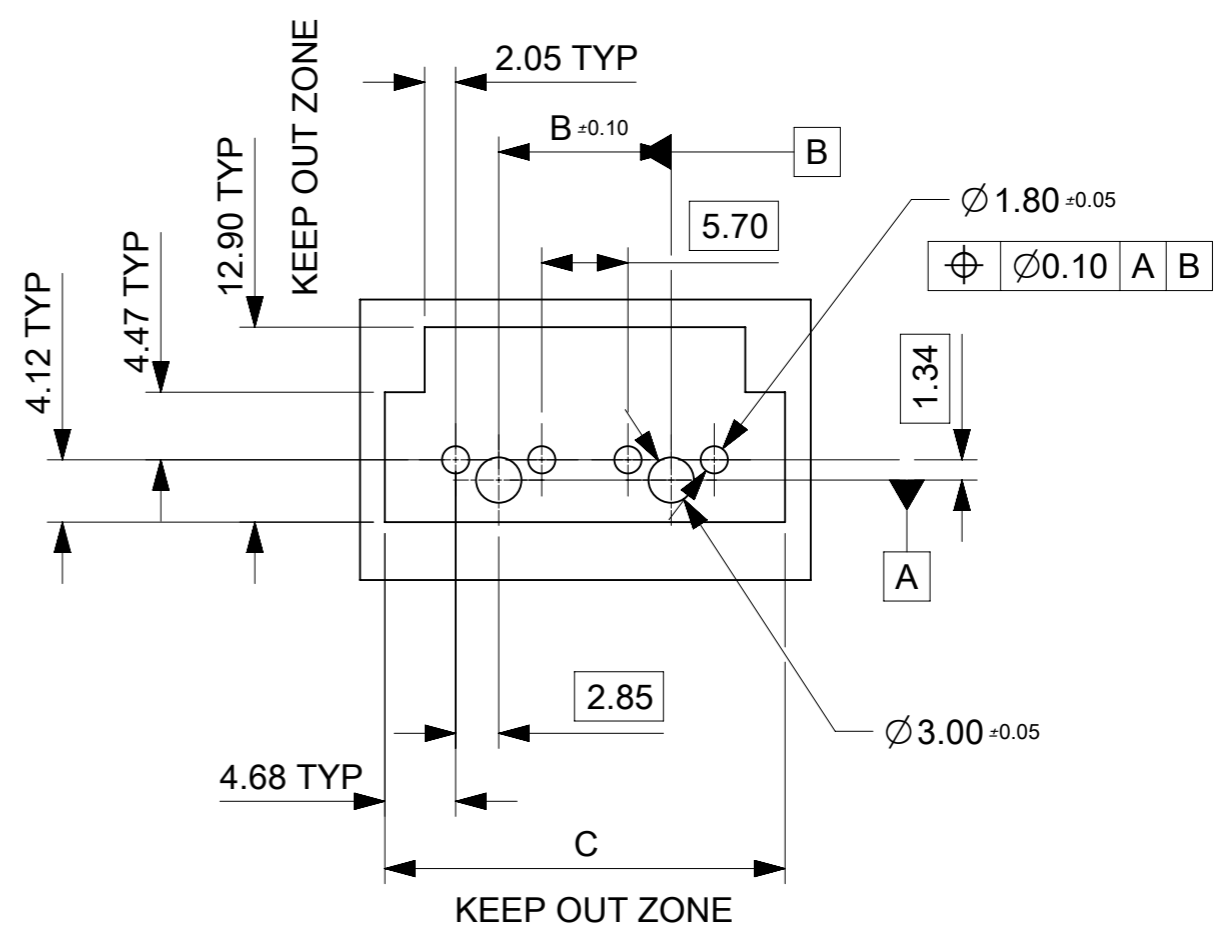
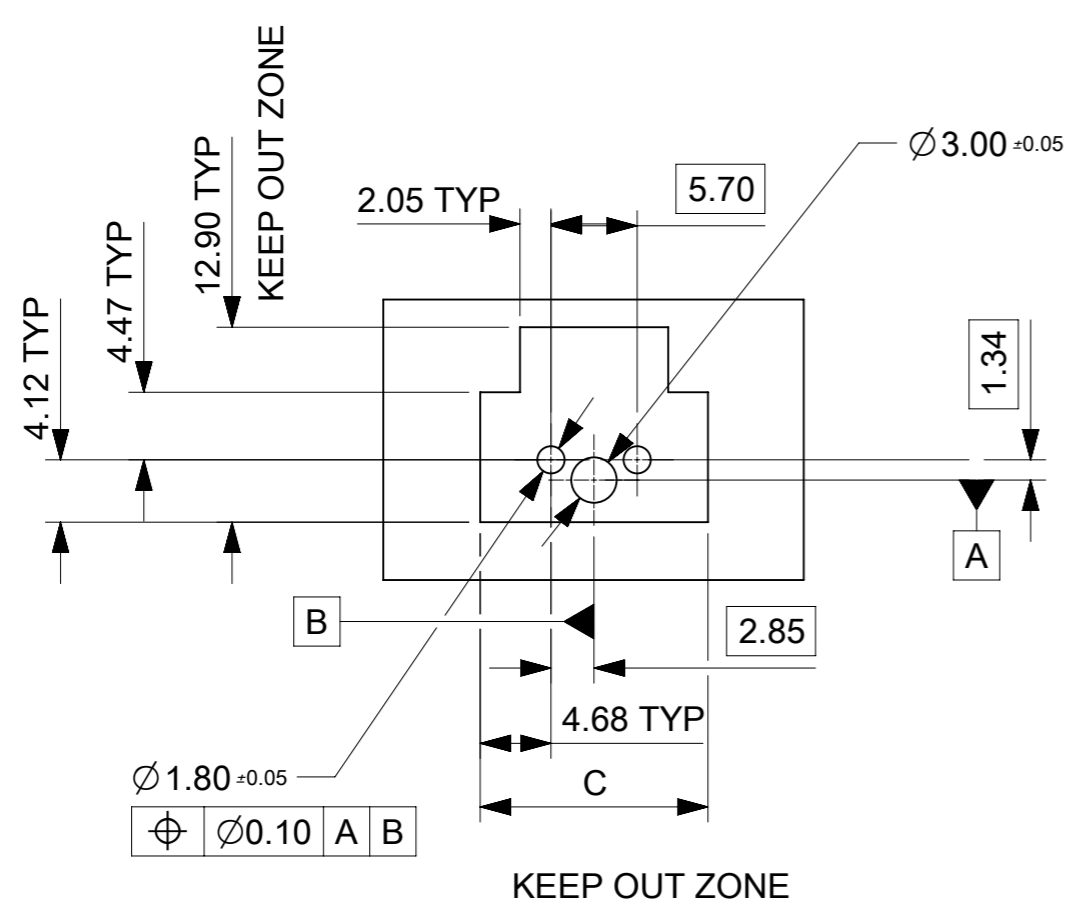
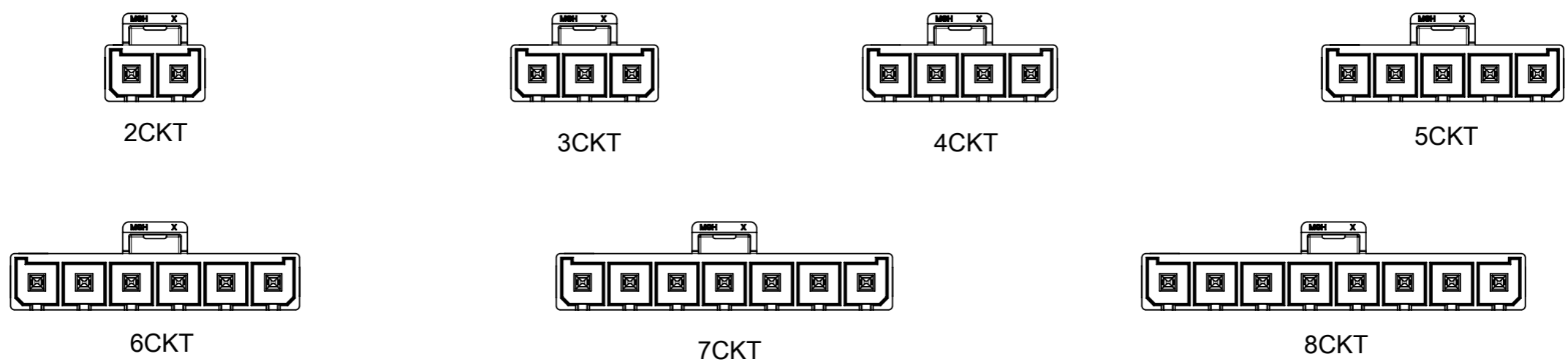


NOTES:

- MATERIAL:
HOUSING LCP, UL94V-0 AND GLOW WIRE CAPABLE PER IEC 60335-1, COLOR: SEE CHART.
TERMINAL COPPER.
- FINISH (PLATING):
(TIN) 1.52 MICROMETER MIN (60 MICROINCH MIN) REFLOWED MATTE TIN OVER
1.27 MICROMETER MIN (50 MICROINCH MIN) MIN NICKEL OVERALL.
(15 GOLD) 0.38 MICROMETER MIN (15 MICROINCH MIN) SELECTIVE GOLD ON CONTACT AREA
WITH 2.54 MICROMETER MIN (100 MICROINCHES MIN) SELECTIVE TIN ON SOLDER AREA
BOTH OVER 1.27 MICROMETER MIN (50 MICROINCHES MIN) NICKEL OVERALL.
(30 GOLD) 0.76 MICROMETER MIN (30 MICROINCH MIN) SELECTIVE GOLD ON CONTACT AREA
WITH 2.54 MICROMETER MIN (100 MICROINCHES MIN) SELECTIVE TIN ON SOLDER AREA
BOTH OVER 1.27 MICROMETER MIN (50 MICROINCHES MIN) NICKEL OVERALL.
- PRODUCT SPECIFICATION: 1720631000-PS.
- PART MATES WITH MOLEX PART NUMBER 200456 SERIES.
- PARTS CONFORM TO CLASS "B" REQUIREMENTS OF COSMETIC SPECIFICATION PS-45499-002.
- PACKAGING SPECIFICATION: TRAY PER 2002411000; T&R WITHOUT KAPTON PER 2002411700;
T&R WITH KAPTON PER 2002411600.
- APPLICATION SPECIFICATION: 768232000-AS.

THIS DRAWING CONTAINS INFORMATION THAT IS PROPRIETARY TO MOLEX ELECTRONIC TECHNOLOGIES, LLC AND SHOULD NOT BE USED WITHOUT WRITTEN PERMISSION		CURRENT REV DESC:		molex	
DIMENSION UNITS	SCALE				
mm	NTS			MEGA-FIT HDR ASMY TOP LATCH, VERT, 2-8CKT	
GENERAL TOLERANCES (UNLESS SPECIFIED)				PRODUCT CUSTOMER DRAWING	
ANGULAR TOL ± 3.0°				DOCUMENT NUMBER	
4 PLACES ±		EC NO: 850632	2025/05/15	2002411000	PSD 000 C5
3 PLACES ±		DRWN: JERRYW8	2026/03/25		
2 PLACES ±	0.4	CHK'D: XQZHANG	2026/03/25		
1 PLACE ±	0.5	APPR: XQZHANG			
0 PLACES ±		INITIAL REVISION:			
DRAFT WHERE APPLICABLE MUST REMAIN WITHIN DIMENSIONS		DRWN: YXZHENG	2018/07/18		
THIRD ANGLE PROJECTION		APPR: YXZHENG	2018/08/06		
DRAWING		SERIES	MATERIAL NUMBER	CUSTOMER	SHEET NUMBER
A3-SIZE		200241	SEE TABLE	GENERAL MARKET	1 OF 3


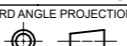


PCB LAYOUT: COMPONENT SIDE
RECOMMENDED PCB THICKNESS: 1.58 MM/.062 IN
TO 2.36 MM/.093 IN

THIS DRAWING CONTAINS INFORMATION THAT IS PROPRIETARY TO MOLEX ELECTRONIC TECHNOLOGIES, LLC AND SHOULD NOT BE USED WITHOUT WRITTEN PERMISSION											
DIMENSION UNITS		SCALE		CURRENT REV DESC:				molex		MEGA-FIT HDR ASMY TOP LATCH, VERT, 2-8CKT	
mm		NTS									
GENERAL TOLERANCES (UNLESS SPECIFIED)										PRODUCT CUSTOMER DRAWING	
ANGULAR TOL ± 3.0°											
4 PLACES		±		EC NO: 850632		2025/05/15		DOCUMENT NUMBER		DOC TYPE DOC PART REVISION	
3 PLACES		±		DRWN: JERRYW8		2026/03/25					
2 PLACES		± 0.4		CHK'D: XQZHANG		2026/03/25		2002411000		PSD 000 C5	
1 PLACE		± 0.5		APPR: XQZHANG				MATERIAL NUMBER		CUSTOMER	
0 PLACES		±		INITIAL REVISION:		2018/07/18		SEE TABLE		GENERAL MARKET	
DRAFT WHERE APPLICABLE MUST REMAIN WITHIN DIMENSIONS		THIRD ANGLE PROJECTION		DRAWING		SERIES		SHEET NUMBER			
		A3-SIZE		200241		2 OF 3					

10		9			8			7		6			5			4		3			2			1						
CKT	PLATING CODE	COLOR	PART NUMBER	DIM-A	DIM-B	DIM-C	PK SPEC	CKT	PLATING CODE	COLOR	PART NUMBER	DIM-A	DIM-B	DIM-C	PK SPEC	CKT	PLATING CODE	COLOR	PART NUMBER	DIM-A	DIM-B	DIM-C	PK SPEC							
F	TIN	BLACK	2002411112	12.05	N/A	15.06	TRAY (2002411000)	2	TIN	BLACK	2002411712	12.05	N/A	15.06	TAPE&REEL WITHOUT KAPTON (2002411700)	2	TIN	BLACK	2002411612	12.05	N/A	15.06	TAPE&REEL WITH KAPTON (2002411600)							
3			2002411113	17.75	5.7	20.76		3			2002411713	17.75	5.7	20.76		3			2002411613	17.75	5.7	20.76								
4			2002411114	23.45	11.4	26.46		4			2002411714	23.45	11.4	26.46		4			2002411614	23.45	11.4	26.46								
5			2002411115	29.15	17.1	32.16		5			2002411715	29.15	17.1	32.16		5			2002411615	29.15	17.1	32.16								
6			2002411116	34.85	22.8	37.86		6			2002411716	34.85	22.8	37.86		6			2002411616	34.85	22.8	37.86								
7			2002411117	40.55	28.5	43.56		7			2002411717	40.55	28.5	43.56		7			2002411617	40.55	28.5	43.56								
8			2002411118	46.25	34.2	49.26		8			2002411718	46.25	34.2	49.26		8			2002411618	46.25	34.2	49.26								
2			15"GOLD	BLACK	2002411122	12.05		N/A			15.06	2	15"GOLD	BLACK		2002411722			12.05	N/A	15.06	2		15"GOLD	BLACK	2002411622	12.05	N/A	15.06	2
3	2002411123	17.75			5.7	20.76		3	2002411723	17.75	5.7	20.76				3	2002411623	17.75	5.7	20.76										
4	2002411124	23.45			11.4	26.46		4	2002411724	23.45	11.4	26.46				4	2002411624	23.45	11.4	26.46										
5	2002411125	29.15			17.1	32.16		5	2002411725	29.15	17.1	32.16				5	2002411625	29.15	17.1	32.16										
6	2002411126	34.85			22.8	37.86		6	2002411726	34.85	22.8	37.86				6	2002411626	34.85	22.8	37.86										
7	2002411127	40.55			28.5	43.56		7	2002411727	40.55	28.5	43.56				7	2002411627	40.55	28.5	43.56										
8	2002411128	46.25			34.2	49.26		8	2002411728	46.25	34.2	49.26				8	2002411628	46.25	34.2	49.26										
E	30"GOLD	BLACK			2002411132	12.05		N/A	15.06	2	30"GOLD	BLACK				2002411732	12.05	N/A	15.06	2	30"GOLD	BLACK				2002411632	12.05	N/A	15.06	2
3			2002411133	17.75	5.7	20.76		3	2002411733	17.75			5.7	20.76		3	2002411633	17.75	5.7	20.76										
4			2002411134	23.45	11.4	26.46		4	2002411734	23.45			11.4	26.46		4	2002411634	23.45	11.4	26.46										
5			2002411135	29.15	17.1	32.16		5	2002411735	29.15			17.1	32.16		5	2002411635	29.15	17.1	32.16										
6			2002411136	34.85	22.8	37.86		6	2002411736	34.85			22.8	37.86		6	2002411636	34.85	22.8	37.86										
7			2002411137	40.55	28.5	43.56		7	2002411737	40.55			28.5	43.56		7	2002411637	40.55	28.5	43.56										
8			2002411138	46.25	34.2	49.26		8	2002411738	46.25			34.2	49.26		8	2002411638	46.25	34.2	49.26										

D																							
C																							
B																							
A																							

THIS DRAWING CONTAINS INFORMATION THAT IS PROPRIETARY TO MOLEX ELECTRONIC TECHNOLOGIES, LLC AND SHOULD NOT BE USED WITHOUT WRITTEN PERMISSION																					
DIMENSION UNITS		SCALE		CURRENT REV DESC:																	
mm		NTS																			
GENERAL TOLERANCES (UNLESS SPECIFIED)				EC NO: 850632 DRWN: JERRYW8 2025/05/15 CHK'D: XQZHANG 2026/03/25 APPR: XQZHANG 2026/03/25 INITIAL REVISION: DRWN: YXZHENG 2018/07/18 APPR: YXZHENG 2018/08/06								MEGA-FIT HDR ASMY TOP LATCH,VERT,2-8CKT									
ANGULAR TOL ± 3.0 °												PRODUCT CUSTOMER DRAWING									
4 PLACES ±												DOCUMENT NUMBER				DOC TYPE		DOC PART		REVISION	
3 PLACES ±												2002411000				PSD		000		C5	
2 PLACES ± 0.4																					
1 PLACE ± 0.5																					
0 PLACES ±																					
DRAFT WHERE APPLICABLE MUST REMAIN WITHIN DIMENSIONS				THIRD ANGLE PROJECTION		DRAWING		SERIES		MATERIAL NUMBER		CUSTOMER		SHEET NUMBER							
						A3-SIZE		200241		SEE TABLE		GENERAL MARKET		3 OF 3							