

PRODUCT NUMBER  
95296-YXXLF

RoHS COMPATIBLE, SEE NOTE 5

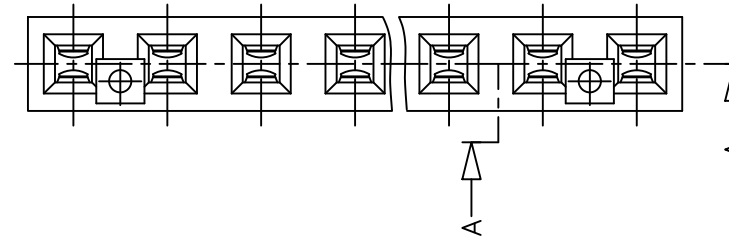
OPTION, SEE NOTE 7  
(AS AVAILABLE)

NB OF POSITIONS, SEE TABLE SHEET 2/2

PLATING CODE, SEE TABLE  
(AS AVAILABLE)

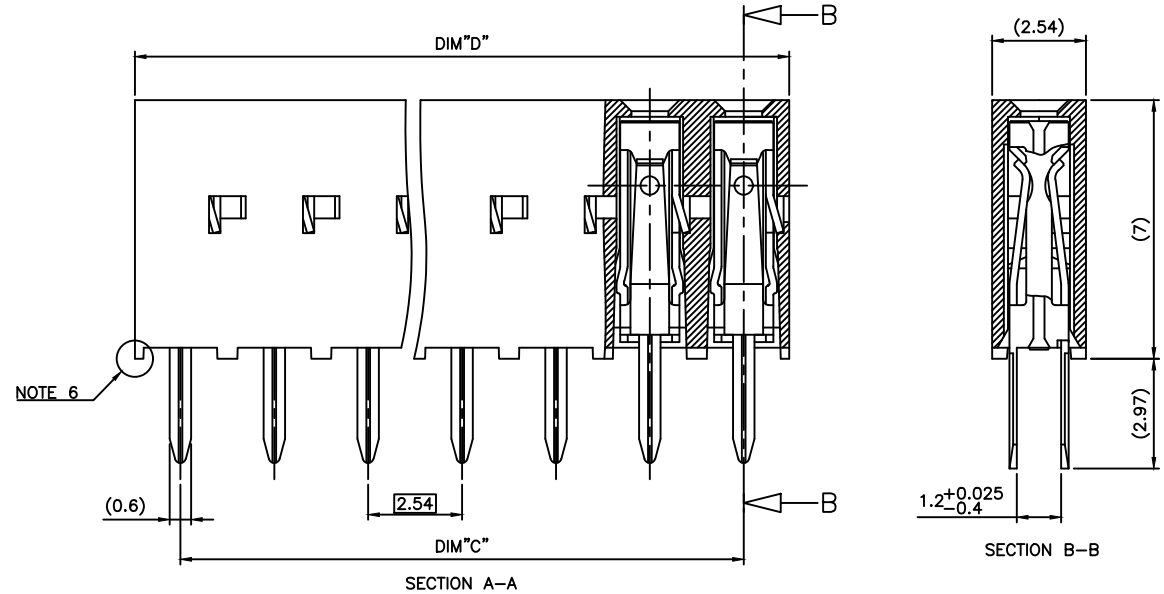
**EXTENDED RANGE**

- TOOLING FEASIBILITY CONFIRMED
- SAMPLES ON DEMAND
- AVAILABILITY ON DEMAND



**NOTES:**

- 1 - MATERIAL HOUSING: PCT HIGH TEMPERATURE  
30% GLASS FILLED, COLOUR GREY  
FLAME RETARDANT PER UL-94 CATEGORY V0
- 2 - MATERIAL TERMINAL: PHOSPHOR BRONZE 3/4 HARD
- 3 - RECOMMENDED PC BOARD THICKNESS FOR TROUGH  
MOUNT APPLICATION: 1.6 mm
- 4 - RECOMMENDED PC BOARD THICKNESS FOR STRADDLE  
MOUNT APPLICATION: 1.2 mm
- 5 - RoHS COMPATIBLE PRODUCT SPECIFICATIONS
  - a - PLATING:
    - "LF" MEANS THE PRODUCT IS LEAD-FREE,  
2µm MINIMUM MATTE TIN OVER 1.27µm  
MINIMUM NICKEL UNDERPLATE.
  - b - MANUFACTURING PROCESS COMPATIBILITY
    - THE HOUSING WILL WITHSTAND EXPOSURE TO  
260°C ±5°C SOLDER BATH TEMPERATURE FOR  
5 SECONDS IN A WAVE SOLDER APPLICATION  
WITH A 1.6mm MIN THICK CIRCUIT BOARD.
  - c - LABELING:
    - MEETS PACKAGING SPECS AS PER GS-14-920
  - d - LEGAL STATEMENT: SEE GS-47-0004
- 6 - END STAND-OFFS FOR 1x2 UP TO 1x5 POS  
NO END STAND-OFFS FOR 1x6 UP TO 1x50 POS
- 7 - BLANK= PACKAGING:
  - 2 UP TO 4 POSITIONS PRODUCT PACKED IN PLASTIC BOX.
  - 5 UP TO 30 POSITIONS PRODUCT PACKED IN TUBE.
 ERT= PACKAGING (AS AVAILABLE):  
5 UP TO 30 POSITIONS PRODUCT PACKED IN TUBE  
FOR DEDICATED CUSTOM PART & SPECIFIC LABEL
- 8 - THIS PART SERIES IS NOT INITIALLY INTENDED FOR  
AUTOMOTIVE APPLICATIONS. ADDITIONAL FEES ARE  
CHARGEABLE FOR ANY ADDITIONAL QUALIFICATION AND  
TEST REPORTS PERFORMED OUTSIDE THE SCOPE OF  
THE STANDARD PRODUCT SPECIFICATIONS.
- 9 - UNLESS OTHERWISE APPROVED BY AMPHENOL, ALL  
PARTS AND COMPONENTS ARE DESIGNED & BUILT  
ACCORDING TO AMPHENOL'S SPECIFICATIONS WHICH  
ARE SUBJECT TO CHANGE WITHOUT NOTICE.



|              |                                  |             |
|--------------|----------------------------------|-------------|
| 95296-5XXLF  | 2 µm GOLD                        | Sn          |
| 95296-3XXLF  | 0.76 µm GOLD                     | Sn          |
| PLATING CODE | CONTACT AREA                     | SOLDER TAIL |
|              | PLATING THICKNESS OVER 1.27µm Ni |             |

|             |          |            |          |                                       |        |            |  |                           |  |
|-------------|----------|------------|----------|---------------------------------------|--------|------------|--|---------------------------|--|
| mat'l. code |          | surface    |          | tolerance                             |        | projection |  | product family            |  |
| SEE NOTES   |          | ISO 1302 ✓ |          | ISO 406 ISO 1101                      |        |            |  | DUBOX VCC SR              |  |
| ltr         | ecn no   | dr         | date     | tolerances unless otherwise specified |        | mm         |  | title                     |  |
| H           | B-19123  | LMU        | 14.10.21 | angles                                | linear | ±0.3       |  | DUAL ENTRY<br>DOUBLE TAIL |  |
| J           | B-19923  | BVE        | 15.01.06 | ±Z                                    |        | scale 5:1  |  | dwg no                    |  |
| K           | F-52780  | DDE        | 24.09.04 | P.NIZZI                               |        | 97.02.28   |  | sheet 1 of 2              |  |
| L           | F-55263  | DDE        | 25.04.03 | enrg                                  |        | JM.PHAMVAN |  | size                      |  |
| F           | F07-027  | LMU        | 07.12.06 | chr                                   |        | P.NIZZI    |  | 95296                     |  |
| G           | F11-0043 | JCO        | 12.02.22 | appd                                  |        | JM.PHAMVAN |  | 97.02.28                  |  |
| sheet       | revision | L          | G        |                                       |        |            |  | type                      |  |
| index       | sheet    | 1          | 2        |                                       |        |            |  | CUSTOMER Drawing          |  |

| PRODUCT NUMBER | NUMBER OF POS. | DIM"C" | DIM"D" |
|----------------|----------------|--------|--------|
| 95296-Y02LF    | 1 x 02         | 2.54   | 5.00   |
| 95296-Y03LF    | 1 x 03         | 5.08   | 7.54   |
| 95296-Y04LF    | 1 x 04         | 7.62   | 10.08  |
| 95296-Y05LF    | 1 x 05         | 10.16  | 12.62  |
| 95296-Y06LF    | 1 x 06         | 12.70  | 15.16  |
| 95296-Y07LF    | 1 x 07         | 15.24  | 17.70  |
| 95296-Y08LF    | 1 x 08         | 17.78  | 20.24  |
| 95296-Y09LF    | 1 x 09         | 20.32  | 22.78  |
| 95296-Y10LF    | 1 x 10         | 22.86  | 25.32  |
| 95296-Y11LF    | 1 x 11         | 25.40  | 27.86  |
| 95296-Y12LF    | 1 x 12         | 27.94  | 30.40  |
| 95296-Y13LF    | 1 x 13         | 30.48  | 32.94  |
| 95296-Y14LF    | 1 x 14         | 33.02  | 35.48  |
| 95296-Y15LF    | 1 x 15         | 35.56  | 38.02  |
| 95296-Y16LF    | 1 x 16         | 38.10  | 40.56  |
| 95296-Y17LF    | 1 x 17         | 40.64  | 43.10  |
| 95296-Y18LF    | 1 x 18         | 43.18  | 45.64  |
| 95296-Y19LF    | 1 x 19         | 45.72  | 48.18  |
| 95296-Y20LF    | 1 x 20         | 48.26  | 50.72  |
| 95296-Y21LF    | 1 x 21         | 50.80  | 53.26  |
| 95296-Y22LF    | 1 x 22         | 53.34  | 55.80  |
| 95296-Y23LF    | 1 x 23         | 55.88  | 58.34  |
| 95296-Y24LF    | 1 x 24         | 58.42  | 60.88  |
| 95296-Y25LF    | 1 x 25         | 60.96  | 63.42  |
| 95296-Y26LF    | 1 x 26         | 63.50  | 65.96  |
| 95296-Y27LF    | 1 x 27         | 66.04  | 68.50  |
| 95296-Y28LF    | 1 x 28         | 68.58  | 71.04  |
| 95296-Y29LF    | 1 x 29         | 71.12  | 73.58  |
| 95296-Y30LF    | 1 x 30         | 73.66  | 76.12  |

| PRODUCT NUMBER | NUMBER OF POS. | DIM"C" | DIM"D" |
|----------------|----------------|--------|--------|
| 95296-Y31LF    | 1 x 31         | 76.20  | 78.66  |
| 95296-Y32LF    | 1 x 32         | 78.74  | 81.20  |
| 95296-Y33LF    | 1 x 33         | 81.28  | 83.74  |
| 95296-Y34LF    | 1 x 34         | 83.82  | 86.28  |
| 95296-Y35LF    | 1 x 35         | 86.36  | 88.82  |
| 95296-Y36LF    | 1 x 36         | 88.90  | 91.36  |
| 95296-Y37LF    | 1 x 37         | 91.44  | 93.90  |
| 95296-Y38LF    | 1 x 38         | 93.98  | 96.44  |
| 95296-Y39LF    | 1 x 39         | 96.52  | 98.98  |
| 95296-Y40LF    | 1 x 40         | 99.06  | 101.52 |
| 95296-Y41LF    | 1 x 41         | 101.60 | 104.06 |
| 95296-Y42LF    | 1 x 42         | 104.14 | 106.60 |
| 95296-Y43LF    | 1 x 43         | 106.68 | 109.14 |
| 95296-Y44LF    | 1 x 44         | 109.22 | 111.68 |
| 95296-Y45LF    | 1 x 45         | 111.76 | 114.22 |
| 95296-Y46LF    | 1 x 46         | 114.30 | 116.76 |
| 95296-Y47LF    | 1 x 47         | 116.84 | 119.30 |
| 95296-Y48LF    | 1 x 48         | 119.38 | 121.84 |
| 95296-Y49LF    | 1 x 49         | 121.92 | 124.38 |
| 95296-Y50LF    | 1 x 50         | 124.46 | 126.92 |

Amphenol  
FCI  
FCIconnect.com

Copyright FCI

|             |          |  |          |                                       |            |            |  |                  |  |
|-------------|----------|--|----------|---------------------------------------|------------|------------|--|------------------|--|
| mat'l. code |          | surface                                      |          | tolerance                             |            | projection |  | product family   |  |
| SEE NOTES   |          | ISO 1302 <input checked="" type="checkbox"/> |          | ISO 406 ISO 1101                      |            |            |  | DUBOX VCC SR     |  |
| ltr         | ecn no   | dr   | date     | tolerances unless otherwise specified |            | mm         |  | title            |  |
| C           | F04-0347 | DLE  | 04.11.17 | angles                                | linear     | $\pm 0.3$  |  | DUAL ENTRY       |  |
| D           | F06-0214 | DLE  | 06.06.29 |                                       |            | mm         |  | DOUBLE TAIL      |  |
| E           | B-19123  | BVE  | 14.10.21 | $\pm 2$                               |            | scale 5:1  |  | dwg no           |  |
| F           | B-19923  | BVE  | 15.01.08 | dr                                    | P.NIZZI    | 97.02.28   |  | sheet 2 of 2     |  |
| G           | F-55263  | DDE  | 25.04.03 | engr                                  | JM.PHAMVAN | 97.02.28   |  | size             |  |
|             |          |  |          | chr                                   | P.NIZZI    | 97.02.28   |  | A3               |  |
|             |          |  |          | appd                                  | JM.PHAMVAN | 97.02.28   |  | type             |  |
|             |          |  |          |                                       |            |            |  | CUSTOMER Drawing |  |
| sheet       | revision |  |          |                                       |            |            |  |                  |  |
| index       | sheet    |  |          |                                       |            |            |  |                  |  |