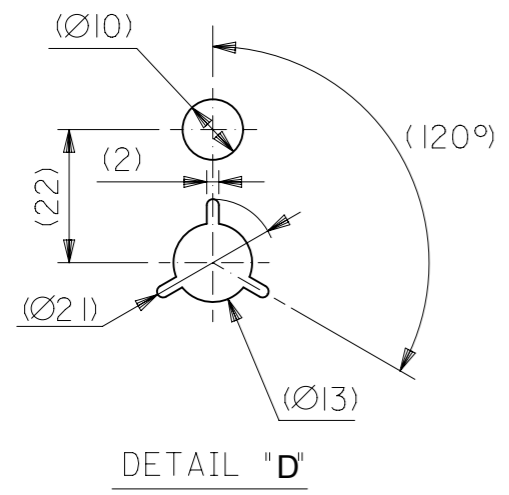


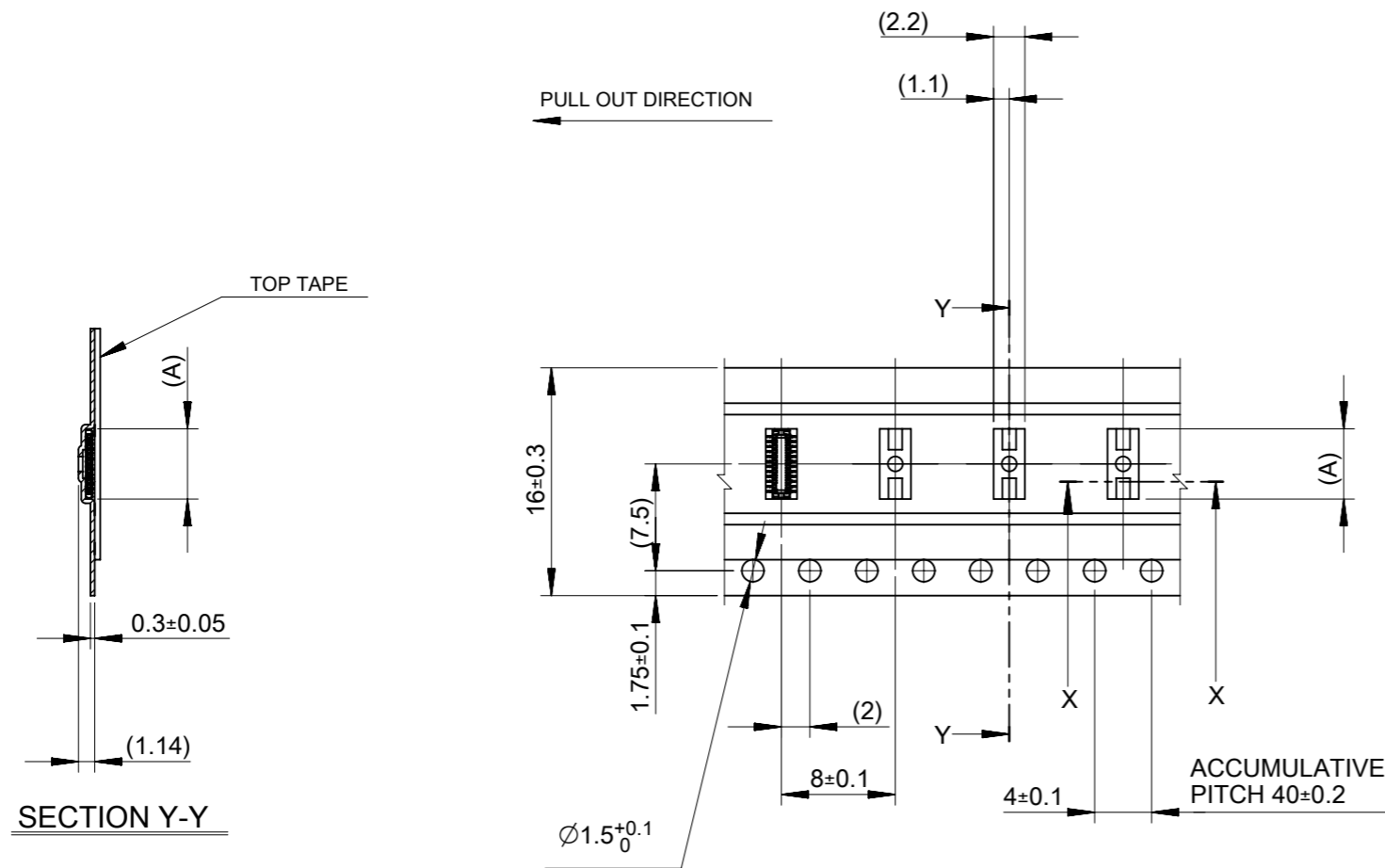
NOTES

1. DETAIL DIMENSIONS, SEE PRODUCT DRAWING.
2. NUMBER OF CONNECTORS : 8000PCS/REEL
3. LEAD TAPE LENGTH
4. TOP TAPE PEEL FORCE IS DEFINED BY IEC60286-3.
5. MATERIAL
 CARRIER TAPE : POLYSTYRENE
 TOP TAPE : PET , OTHER
 REEL : POLYSTYRENE (PS) <RECYCLE MATERIAL CONTAINED>



MODEL NO. 504622-**12

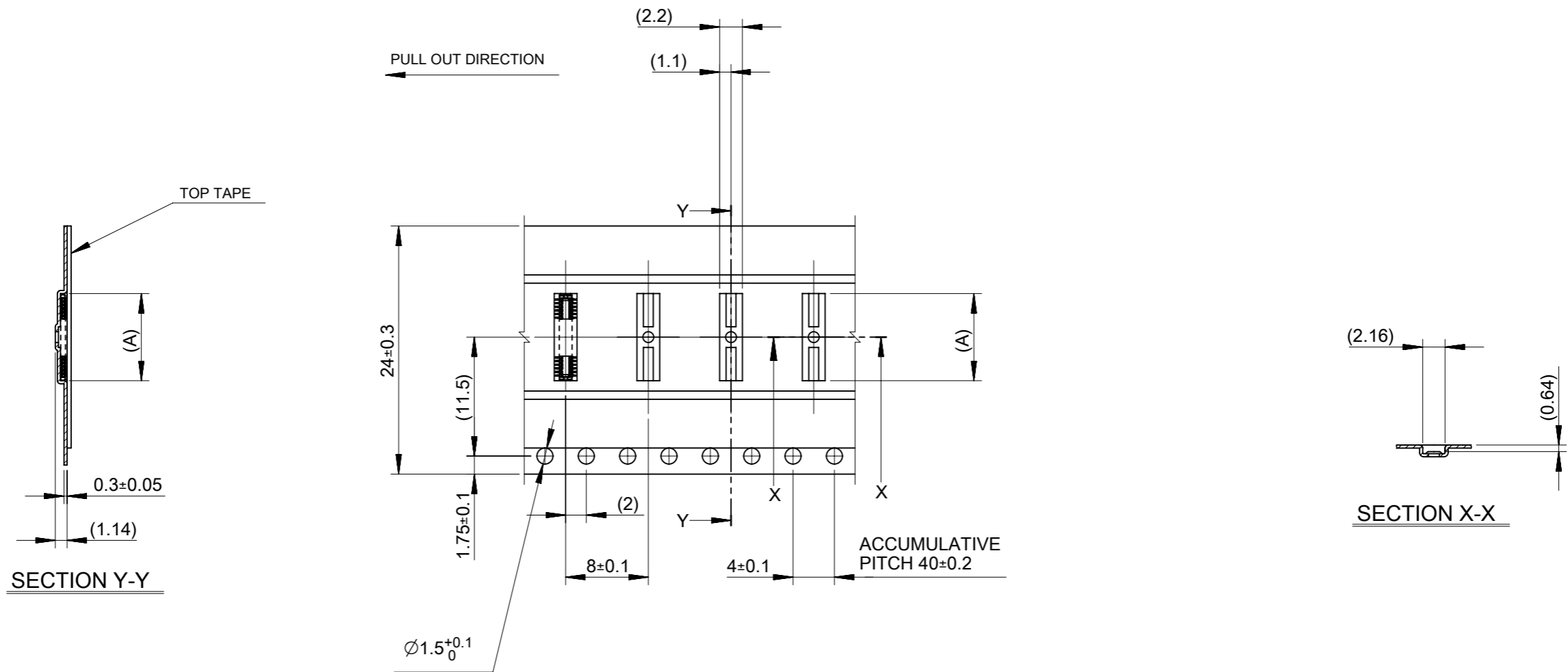
THIS DRAWING CONTAINS INFORMATION THAT IS PROPRIETARY TO MOLEX ELECTRONIC TECHNOLOGIES, LLC AND SHOULD NOT BE USED WITHOUT WRITTEN PERMISSION															
DIMENSION UNITS mm		SCALE 1:5		CURRENT REV DESC: REMOVED OBSOLETE PART NUMBERS AS PER PCN#513389											
GENERAL TOLERANCES (UNLESS SPECIFIED)				molex 0.35 BB CONN. H=0.6 SSB6 PLUG ASSY EMBSTP PKG PRODUCT CUSTOMER DRAWING											
ANGULAR TOL ± °															
4 PLACES ±		EC NO: 781755								2024/03/18		DOCUMENT NUMBER		DOC TYPE	
3 PLACES ±		DRWN: MADHAM5								2024/04/10		5046220000		PSD 004	
2 PLACES ±		CHK'D: GGA								2024/04/10		REVISION		A1	
1 PLACE ±		APPR: GGA								INITIAL REVISION:		MATERIAL NUMBER		CUSTOMER	
0 PLACES ±		DRWN: TNISHIDA02		2017/03/29		504622		GENERAL							
0 PLACES ±		APPR: TKUSUHARA01		2017/04/03		SEE CHART		1 OF 3							
DRAFT WHERE APPLICABLE MUST REMAIN WITHIN DIMENSIONS				THIRD ANGLE PROJECTION		DRAWING		SHEET NUMBER							
						A3-SIZE		504622							



16	21.4	17.4	6.68	---	○	---	30	
			5.63	---	○	---	24	
			4.93	504622-2012	○	---	20	
			4.58	---	---	---	18	
			4.23	---	---	---	16	
			3.53	---	---	---	12	
			3.18	504622-1012	○	---	10	
			2.48	---	---	---	6	
キャリアテープ幅 CARRIER TAPE WIDTH		C	B	(A)	EMBOSSED TAPE PACKAGE	HIGH VOL. TOOL	LOW VOL. TOOL	CIRCUIT
					ORDER NO.	SAMPLE PREPARATION ○ : TOOLED △ : WORK IN PROCESS --- : TOOLING TO BE CONFIRMED		
CONNECTOR SERIES NO.:504622-**09								

THIS DRAWING CONTAINS INFORMATION THAT IS PROPRIETARY TO MOLEX ELECTRONIC TECHNOLOGIES, LLC AND SHOULD NOT BE USED WITHOUT WRITTEN PERMISSION

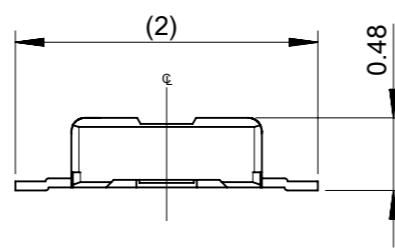
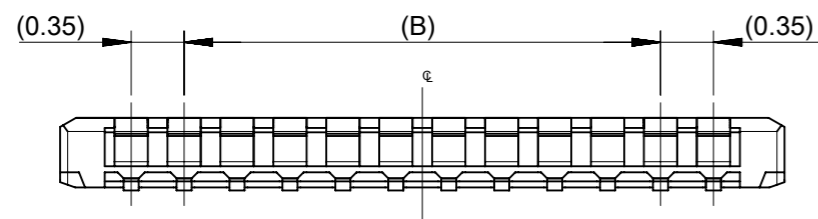
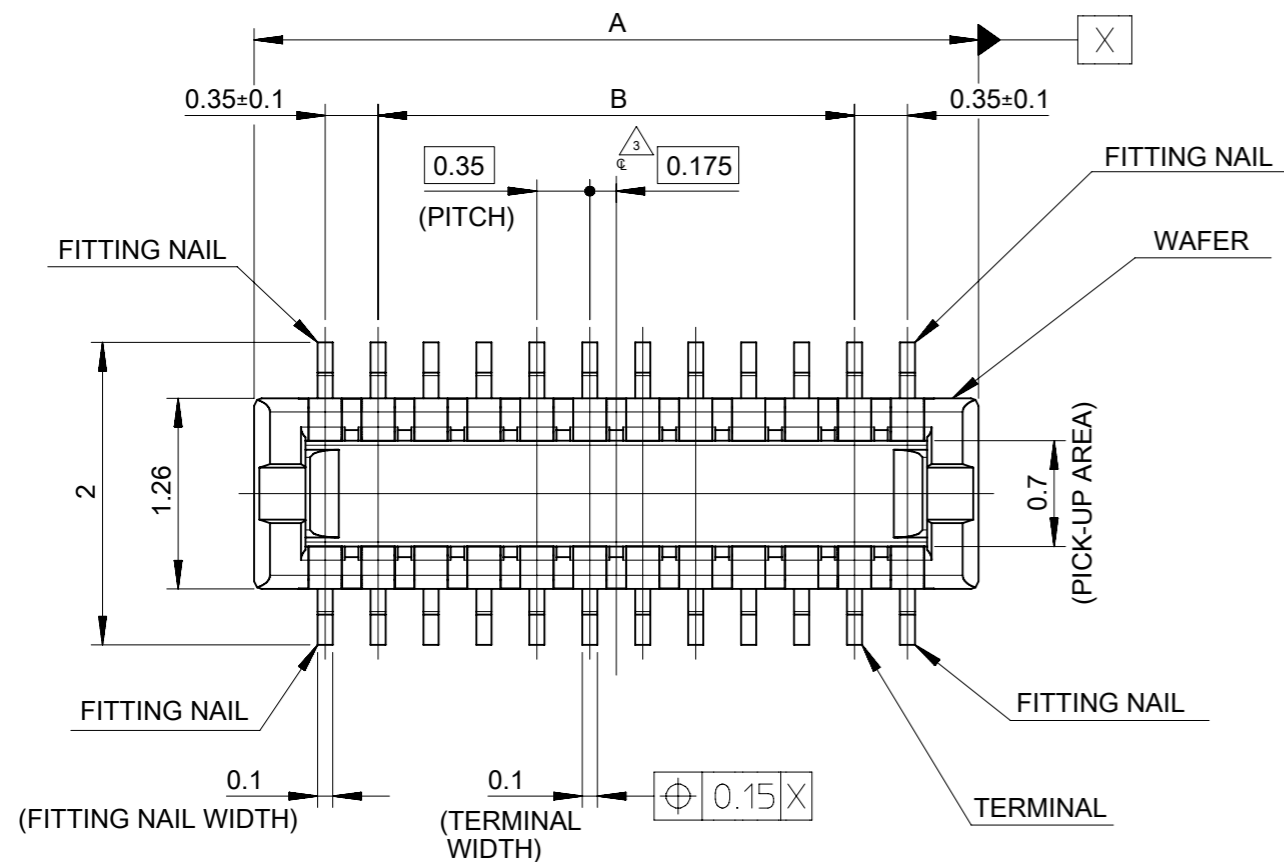
DIMENSION UNITS mm	SCALE 2:1	CURRENT REV DESC: REMOVED OBSOLETE PART NUMBERS AS PER PCN#513389	molex			
GENERAL TOLERANCES (UNLESS SPECIFIED)						
ANGULAR TOL ± °			0.35 BB CONN. H=0.6 SSB6 PLUG ASSY EMBSTP PKG			
4 PLACES ±		EC NO: 781755	PRODUCT CUSTOMER DRAWING			
3 PLACES ±		DRWN: MADHAM5 2024/03/18	DOCUMENT NUMBER			
2 PLACES ±		CHK'D: GGA 2024/04/10	5046220000			
1 PLACE ±		APPR: GGA 2024/04/10	DOC TYPE DOC PART REVISION			
0 PLACES ±		INITIAL REVISION:	PSD 004 A1			
		DRWN: TNISHIDA02 2017/03/29	MATERIAL NUMBER			
		APPR: TKUSUHARA01 2017/04/03	CUSTOMER			
DRAFT WHERE APPLICABLE MUST REMAIN WITHIN DIMENSIONS	THIRD ANGLE PROJECTION	DRAWING	SERIES	MATERIAL NUMBER	CUSTOMER	SHEET NUMBER
		A3-SIZE	504622	SEE CHART	GENERAL	2 OF 3



24	29.4	25.4	13.68	504622-7012	○	---	70	
			12.63	504622-6412	○	---	64	
			11.93	---	---	---	60	
			11.58	---	---	---	58	
			10.88	---	---	---	54	
			10.18	---	○	---	50	
			9.83	---	---	---	48	
			8.78	---	---	---	42	
			8.43	504622-4012	○	---	40	
			8.08	---	---	---	38	
7.38	---	○	---	34				
キャリアテープ幅 CARRIER TAPE WIDTH		C	B	(A)	EMBOSSED TAPE PACKAGE	HIGH VOL. TOOL	LOW VOL. TOOL	CIRCUIT
				ORDER NO.	SAMPLE PREPARATION ○ : TOOLED △ : WORK IN PROCESS --- : TOOLING TO BE CONFIRMED			
CONNECTOR SERIES NO.:504622-**09								

THIS DRAWING CONTAINS INFORMATION THAT IS PROPRIETARY TO MOLEX ELECTRONIC TECHNOLOGIES, LLC AND SHOULD NOT BE USED WITHOUT WRITTEN PERMISSION

DIMENSION UNITS mm	SCALE 2:1	CURRENT REV DESC: REMOVED OBSOLETE PART NUMBERS AS PER PCN#513389	molex			
GENERAL TOLERANCES (UNLESS SPECIFIED)		EC NO: 781755				0.35 BB CONN. H=0.6 SSB6 PLUG ASSY EMBSTP PKG
ANGULAR TOL ± °		DRWN: MADHAM5 2024/03/18	PRODUCT CUSTOMER DRAWING			
4 PLACES ±		CHK'D: GGA 2024/04/10	DOCUMENT NUMBER			
3 PLACES ±		APPR: GGA 2024/04/10	5046220000			
2 PLACES ±		INITIAL REVISION:	DOC TYPE	DOC PART	REVISION	
1 PLACE ±		DRWN: TNISHIDA02 2017/03/29	PSD	004	A1	
0 PLACES ±		APPR: TKUSUHARA01 2017/04/03				
DRAFT WHERE APPLICABLE MUST REMAIN WITHIN DIMENSIONS	THIRD ANGLE PROJECTION	DRAWING	SERIES	MATERIAL NUMBER	CUSTOMER	SHEET NUMBER
		A3-SIZE	504622	SEE CHART	GENERAL	3 OF 3



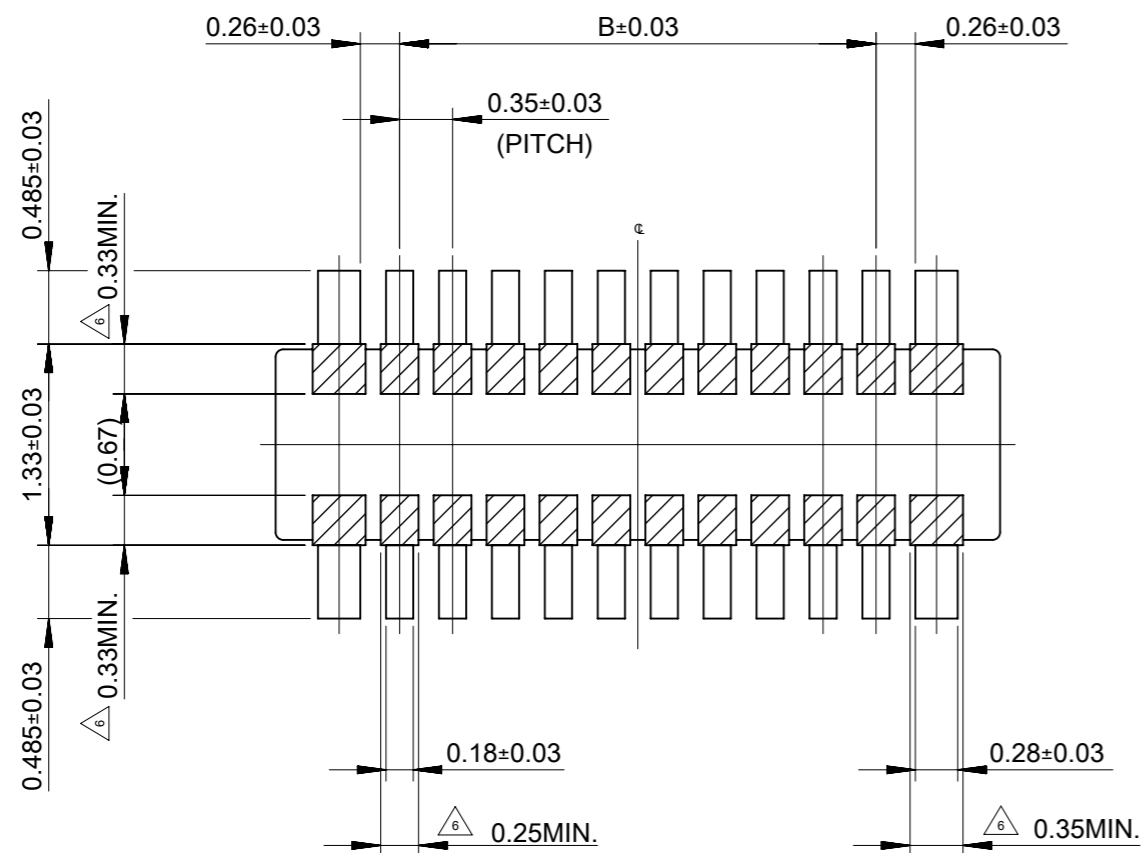
NOTES

1. MATERIAL
 WAFER : LIQUID CRYSTAL POLYMER UL94V-0(COLOR : BLACK)
 PIN : COPPER ALLOY
 FITTING NAIL : COPPER ALLOY
2. PLATING
 TERMINAL
 GOLD
 UNDER PLATING : NICKEL
 *DIVIDE INTO PARTS THE GOLD PLATING OF THE CONTACT AND THE TAIL PART BY THE NICKEL PLATING.
 FITTING NAIL
 GOLD
 UNDER PLATING : NICKEL
3. APPLY FOR (CIRCUIT/2)=EVEN.
4. MATE WITH : 504618-**12
5. TAIL AND FITTING NAIL COPLANARITY TO BE 0.08MAXIMUM.
6. PROHIBITED AREA OF PATTERN WIRING AND SOLDER.
 (FOR EACH AREA, THE WIRING THAT TOUCHES ON THE SOLDER CAN BE ATTACHED, THEN COVERED WITH A FILM TO KEEP SOLDER OUT.)
7. ELECTRIC SPEC OF FITTING NAIL IS NOT GUARANTEED WHEN MATED.

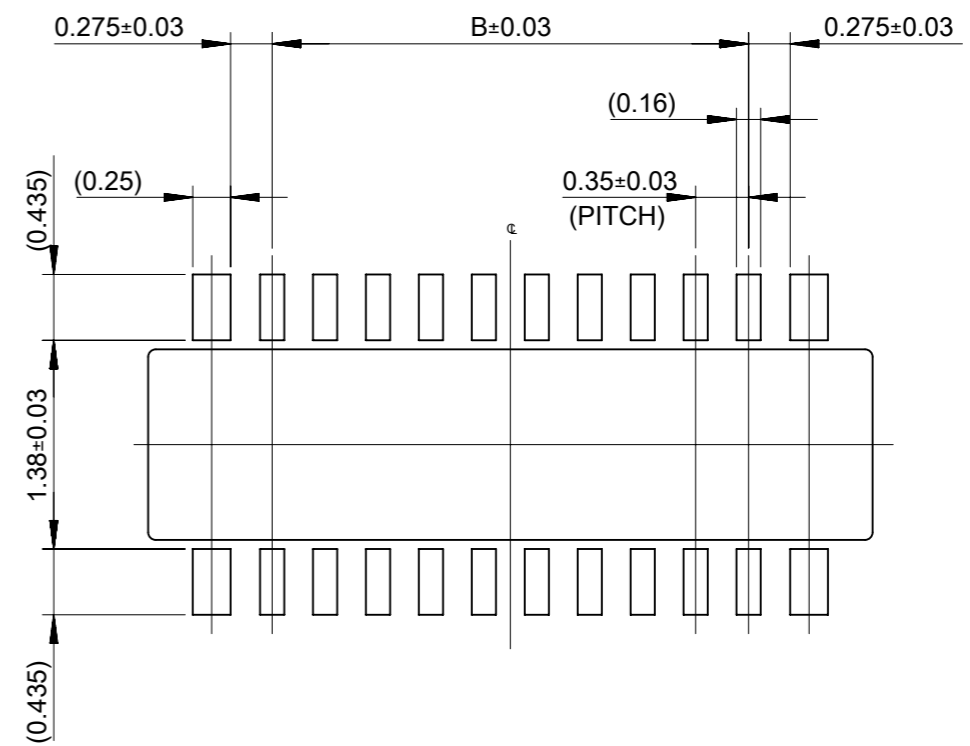
11.90±0.25	13.54±0.25	504622-7012	○	---	70
10.85±0.25	12.49±0.25	504622-6412	○	---	64
10.15±0.25	11.79±0.25	---	---	---	60
9.80	11.44±0.25	---	---	---	58
9.10	10.74±0.25	---	---	---	54
8.40	10.04±0.25	---	○	---	50
8.05	9.69	---	---	---	48
7.00	8.64	---	---	---	42
6.65	8.29	504622-4012	○	---	40
6.30	7.94	---	---	---	38
5.60	7.24	---	○	---	34
4.90	6.54	---	○	---	30
3.85	5.49	---	○	---	24
3.15	4.79	504622-2012	○	---	20
2.80	4.44	---	---	---	18
2.45	4.09	---	---	---	16
1.75	3.39	---	---	---	12
1.40	3.04	504622-1012	○	---	10
0.70	2.34	---	---	---	6
B	A	EMBOSSED TAPE PACKAGE	HIGH VOL. TOOL	LOW VOL. TOOL	CIRCUIT
ORDER NO.		SAMPLE PREPARATION			
		○ : TOOLED			
		△ : WORK IN PROCESS			
		--- : TOOLING TO BE CONFIRMED			

CONNECTOR SERIES No. : 504622-09**

THIS DRAWING CONTAINS INFORMATION THAT IS PROPRIETARY TO MOLEX ELECTRONIC TECHNOLOGIES, LLC AND SHOULD NOT BE USED WITHOUT WRITTEN PERMISSION									
DIMENSION UNITS	SCALE	CURRENT REV DESC: REMOVED OBSOLETE PART NUMBERS AS PER PCN#513389							
mm	20:1								
GENERAL TOLERANCES (UNLESS SPECIFIED)									
ANGULAR TOL	± 1.0 °	0.35 BB CONN. H=0.6 SSB6 PLUG ASSY							
4 PLACES	± 0.2								
3 PLACES	± 0.2	PRODUCT CUSTOMER DRAWING							
2 PLACES	± 0.2								
1 PLACE	± 0.2	5046221000							
0 PLACES	± 0.2								
DRAFT WHERE APPLICABLE MUST REMAIN WITHIN DIMENSIONS		THIRD ANGLE PROJECTION	DRAWING	SERIES	MATERIAL NUMBER	CUSTOMER	SHEET NUMBER		
			A3-SIZE	504622	SEE CHART	GENERAL	1 OF 2		

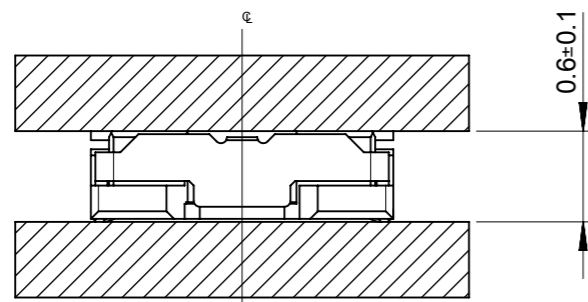


RECOMMENDED P.W.BOARD PATTERN LAYOUT(REFERENCE)



RECOMMENDED METAL MASK LAYOUT(REFERENCE)

RECOMMENDED THICKNESS OF METAL MASK : $t=0.08\text{mm}$
 RECOMMENDED OPEN APERTURE RATIO OF METAL MASK : 80%



MATED CONDITION

THIS DRAWING CONTAINS INFORMATION THAT IS PROPRIETARY TO MOLEX ELECTRONIC TECHNOLOGIES, LLC AND SHOULD NOT BE USED WITHOUT WRITTEN PERMISSION										
DIMENSION UNITS	SCALE	CURRENT REV DESC: REMOVED OBSOLETE PART NUMBERS AS PER PCN#513389								
mm	20:1									
GENERAL TOLERANCES (UNLESS SPECIFIED)										
ANGULAR TOL	± 1.0 °	0.35 BB CONN. H=0.6 SSB6 PLUG ASSY								
4 PLACES	± 0.2	PRODUCT CUSTOMER DRAWING								
3 PLACES	± 0.2	DOCUMENT NUMBER								
2 PLACES	± 0.2	5046221000								
1 PLACE	± 0.2	DOC TYPE								
0 PLACES	± 0.2	PSD								
DRAFT WHERE APPLICABLE MUST REMAIN WITHIN DIMENSIONS		THIRD ANGLE PROJECTION		DRAWING	SERIES	MATERIAL NUMBER	CUSTOMER	DOC PART	REVISION	
				A3-SIZE	504622	SEE CHART	GENERAL	003	A1	
DOCUMENT STATUS		P1	RELEASE DATE	2024/04/10	10:13:37					
		9	8	7	6	5	4	3	2	1