

QUICK REFERENCE GUIDE

AMPLIMITE RIGHT ANGLE POSTED D-SUBMINIATURE CONNECTORS

TE offers one of the broadest and most versatile portfolios of D-subminiature connectors in the market. Our reliable AMPLIMITE connectors are available in a variety of plating types to satisfy different applications. These connectors are intermateable with any size 20 or size 22 D-subminiature connectors dimensionally complying with MIL-C-24308 standard.



FEATURES

- Flame retardant thermoplastic housing material, UL 94V-0 rated.
- HD-20 right angle connectors are available in 9, 15, 25, and 37 positions in both plug and receptacle versions; some versions are available in 50 position.
- HD-22 right angle receptacle connectors are available in 15, 26, 44, 62, and 78 positions.
- Low cost front metal-shell design compatible with full metal-shell connectors.

APPLICATIONS

- Computers and peripherals
- Industrial machinery
- Medical instrumentation
- RAID storage arrays
- File servers/routers
- Tape storage systems
- Work stations
- On-machine industrial communications
- Personal and handheld devices

HOW TO SELECT AN AMPLIMITE CONNECTOR PART NUMBER

The charts on the following pages highlight the AMPLIMITE part numbers with the key product attributes to help identify the correct part for your application. Each section also includes a list of materials to characterize the composition of each part.

HOW TO SELECT AN AMPLIMITE CONNECTOR PART NUMBER

MATERIALS

Housing: 94V-0 rated thermoplastic, black **Shell:** Steel, nickel plated

Contact Plating:

A: Gold flash on mating end, tin on solder tails with overall nickel underplated

B: .000015 gold plating on mating end, tin on solder end tails with overall nickel underplated

Boardlocks: Brass, tin plated

Female Screwlocks: Brass, nickel plated

Threaded Screwlocks: Brass, nickel plated

Shell Size	Contact Finish	Female Screwlocks	Threaded Inserts
9	A	2311765-1	-
	B	2311765-2	
15	A	-	2311767-1
25	A	2311766-1	2311762-1

All part numbers are RoHS compliant.

AMPLIMITE HD-22 RIGHT ANGLE POSTED SUBMINIATURE D CONNECTORS

MATERIALS

Housing: 94V-0 rated thermoplastic, black

VESA Std. 15-position Receptacle

Housing Material: Thermoplastic 94V0 blue per VESA standard

Shell: Steel, nickel plated

Contacts:

Pins: Brass

Sockets: Phosphor Bronze

Contact Plating: Gold Flash, .000015 or .000030 gold plating on mating end, tin on solder tails with overall nickel underplate

Boardlocks: Brass, tin plated

Female Screwlocks: Brass, nickel plated

Threaded Inserts: Brass, nickel plated

Right Angle Plugs

# of Contact Positions	Mounting Hardware	Mounting Style	Part Number
15	4-40 inserts	boardlocks	2311774-1
15	4-40 screwlocks	boardlocks	2311775-1
26	4-40 inserts	boardlocks	2311776-1
44	4-40 inserts	boardlocks	2311777-1
62	4-40 inserts	boardlocks	2311773-1

All part numbers are RoHS compliant.



Right Angle Receptacle



Right Angle Plug

Right Angle Receptacles

Contact Positions	Mounting Hardware	Mounting Style	Gold Flash	15µ gold	30µ gold
15	4-40 inserts	boardlocks	2311763-2	-	2311763-3
15	4-40 screwlocks	boardlocks	-	-	2311763-1
15 VESA	4-40 inserts	boardlocks	2311586-4	-	2311586-5
15 VESA	4-40 screwlocks	boardlocks	2311586-1	-	
26	4-40 screwlocks	boardlocks	-	-	2311768-1
26	4-40 screwlock	boardlocks	-	-	2311768-2
44	4-40 inserts	boardlocks	-	-	2311770-1
44	4-40 screwlocks	boardlocks	-	2311770-2	
62	4-40 inserts	boardlocks	-	-	2311771-1
78	4-40 inserts	boardlocks	-	-	2311772-1

HD-20 FRONT METAL SHELL RIGHT ANGLE POSTED CONNECTORS 318 MOUNT

Plugs

Shell Size	# of Contact Positions	Contact Finish	Without Boardlocks		With Boardlocks		
			Threaded inserts	Fixed Female Screwlocks	Standard Mounting Holes	Threaded inserts	Fixed Female Screwlocks
1	9	A	5747250-4	5747250-6	5747840-2	5747840-4	5747840-6
		B	5747250-3	-	-	5747841-6	5747840-5
2	15	A	5747236-4	5747236-6	5747841-2	5747841-4	5747841-6
		B	5747236-4	-	-	5747841-3	-
3	25	A	5747238-4	5747238-6	5747842-2	5747842-4	5747842-6
		B	5747238-3	-	-	5747842-3	5747842-5
4	37	A	5747252-4	-	5747843-2	5747843-4	5747843-6
		B	-	-	-	5747843-3	-

Receptacles

Shell Size	# of Contact Positions	Contact Finish	Without Boardlocks			With Boardlocks		
			Standard Mounting Holes	Threaded inserts	Fixed Female Screwlocks	Standard Mounting Holes	Threaded inserts	Fixed Female Screwlocks
1	9	A	5745781-2	5745781-4	5745781-6	5747844-2	5747844-4	5747844-6
		B	-	-	-	-	5747844-3	5747844-5
2	15	A	5745782-2	5745782-4	5745782-6	-	5747845-4	5747845-6
		B	-	-	-	-	5747845-3	5747845-5
3	25	A	-	5745783-4	5745783-6	5747846-3	5747846-4	5747846-6
		B	-	5745783-3	5745783-5	5747847-4	5747846-3	5747846-5
4	37	A	-	5745784-4	-	-	5747847-4	5747847-6

1. All plug connectors are preloaded with size 20 DF posted pin contacts.
2. Recommended PC board thickness is .062 [1.58] for connectors with boardlocks and .093 [2.36] max for all others.
3. Male screw retainers are used as mating hardware for connectors with 4-40 female screwlocks.
4. All part numbers are RoHS compliant.

MATERIALS

Front Shell: Steel, tin plated **Housing:** 94V-0 rated thermoplastic

Eyelets: Brass, tin plated

Threaded Inserts: Zinc

Female Screwlocks: Zinc

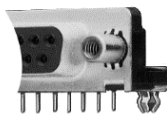
Boardlocks: Copper alloy, tin plated

Socket Contacts (Posted): Phosphor bronze, duplex plated

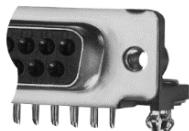
Pin contacts (posted): Brass, duplex plated as follows:

A: .000030 gold plating on mating end, tin on termination end, with entire contact nickel underplated

B: Gold flash on mating end, tin on termination end, with entire contact nickel underplated



With Fixed Female Screwlock



With Threaded Inserts



With Standard Mounting Holes

HD-20 FRONT METAL SHELL RIGHT ANGLE POSTED CONNECTORS 318 MOUNT

MATERIALS

Front Shell: Steel, tin plated

Housing: 94V-0 rated thermoplastic, compatible with standard wave, vapor phase, and infra-red reflow (SMT) soldering, black

Eyelets: Brass, tin plated

Threaded Inserts: Zinc

Female Screwlocks: Zinc

Boardlocks: Copper alloy, tin plated

Pin Contacts (Posted): Brass, duplex plated as follows:

A: .000030 gold plating on mating end, tin on termination end, with entire contact nickel underplated

B: Gold flash on mating end, tin on termination end, with entire contact nickel underplated

Plugs with Boardlocks

Shell Size	# of Contact Positions	Contact Finish	Threaded Inserts	Fixed Female Screwlocks
1	9	A	5788792-1	5788793-1
		B	5788792-2	5788793-2
3	25	A	5788794-1	5788795-1

1. All plug connectors are preloaded with size 20 DF posted pin contacts.
2. Recommended PC board thickness is .062 [1.58] for connectors with boardlocks and .093 [2.36] max for all others.
3. Male screw retainers are used as mating hardware for connectors with 4-40 female screwlocks.
4. All part numbers are RoHS compliant.

HD-20 FRONT METAL SHELL RIGHT ANGLE POSTED CONNECTORS 318 MOUNT

MATERIALS

Front Shell: Steel, tin plated

Housing: 94V-0 rated thermoplastic, compatible with standard wave, vapor phase, and infra-red reflow (SMT) soldering, black

Eyelets: Brass, tin plated

Threaded Inserts: Zinc

Female Screwlocks: Zinc

Boardlocks: Copper alloy, tin plated Pin Contacts (Posted):

Phosphor bronze, duplex plated as follows:

A: .000030 gold plating on mating end, tin on termination end, with entire contact nickel underplated

B: Gold flash on mating end, tin on termination end, with entire contact nickel underplated

Receptacles

Shell Size	# of Contact Positions	Contact Finish	Without Boardlocks	With Boardlocks	
			Fixed Female Screwlocks	Threaded Inserts	Fixed Female Screwlocks
1	9	A	5788803-1	5788796-1	5788797-1
		B	-	5788796-2	-
2	15	A	-	5788798-1	5788799-1
		B	-	5788798-1	-
3	25	A	-	5788800-1	5788801-1
		B	-	5788800-2	5788801-2
4	37	A	-	5788802-1	-

HD-20 FULL METAL SHELL RIGHT ANGLE POSTED CONNECTOR 454 MOUNT

MATERIAL AND FINISH

Shell: Steel, tin plated

Insert: 94V-0 rated thermoplastic, black

Contacts (Posted):

Pin: Brass

Socket: Phosphor bronze

Contact Plating:

A: .000030 gold plating on mating end, tin on termination end, with entire contact nickel underplated

Receptacles

Shell Size	# of Contact Positions	Contact Finish	Part #
1	9	A	5745438-4
3	25	A	5745440-4

HD-20 FULL METAL SHELL RIGHT ANGLE POSTED CONNECTOR 454 MOUNT

MATERIAL AND FINISH

Shell: Steel, tin plated

Insert: 94V-0 rated thermoplastic, black

Contacts (Posted):

Pin: Brass

Socket: Phosphor bronze

Contact Plating:

A: .000030 gold plating on mating end, tin on termination end, with entire contact nickel underplated



Plug without Grounding Indents

Plugs

Shell Size	# of Contact Positions	Contact Finish	Part #
1	9	A	5745438-8

1. All connectors are preloaded with size 20 DF posted contacts; plugs with pin contacts and receptacles with socket contacts
2. .125 [3.18] post length is recommended for PC board thickness of .093 [2.36] max; .220 [5.59] post length is recommended for PC board thickness of .125 [3.18] max.
3. All part numbers are RoHS compliant.

MATERIAL AND FINISH

Front Shell: Steel, tin plated

Housing: 94V-0 rated thermoplastic, compatible with standard wave, vapor phase, and infra-red reflow (SMT) soldering, black

Eyelets: Brass, tin plated

Threaded Inserts: Zinc

Female Screwlocks: Zinc

Boardlocks: Copper alloy, tin plated

Socket Contacts (Posted): Phosphor bronze, duplex plated as follows:

A: .000030 gold plating on mating end, tin on termination end, with entire contact nickel underplated

Shell Size	# of Contact Positions	Dim. A	Dim. B	Contact Finish	Threaded Inserts
15	9	1.213	0.984	A	5747852-4

1. All receptacle connectors are preloaded with size 20 DF posted socket contacts.
2. Recommended PC board thickness is .062 [1.58] for connectors with boardlocks and .093 [2.36] max for all others.
3. Male screw retainers are used as mating hardware for connectors with 4-40 female screwlocks.
4. All part numbers are RoHS compliant.



Plug with Grounding Indents

HD-20 FULL METAL SHELL RIGHT ANGLE POSTED CONNECTOR 545 MOUNT



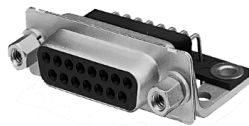
Plug without Grounding Indents



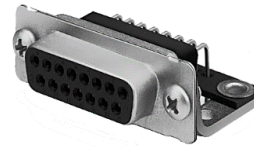
Plug with Grounding Indents



Plug with 4-40 Female Screwlocks



Receptacle with 4-40 Female Screwlocks



Receptacle with Standard Mounting Screw

MATERIAL AND FINISH

Shell: Steel, tin plated **Insert:** 94V-0 rated thermoplastic, black

Female Screwlock: Steel, zinc plated

Pin Contacts (Posted): Brass, duplex plated as follows:

A: .000030 gold plating on mating end, tin on termination end, with entire contact nickel underplated

Plugs

Shell Size	# of Contact Positions	Contact Finish	Without Grounding Indents	Grounding Indents	
			Standard Mounting Screws	Standard Mounting Screws	Female Screwlocks
1	9	A	-	5745351-4	5747197-4
4	37	A	-	5745354-4	-
5	50	A	-	5745355-4	5747497-4

MATERIAL AND FINISH

Shell: Steel, tin plated

Insert: 94V-0 rated thermoplastic, black

Female Screwlocks: Steel, zinc plated

Socket Contacts (Posted): Phosphor bronze, duplex plated as follows:

A: .000030 gold plating on mating end, tin on termination end, with entire contact nickel underplated

B: Gold flash on mating end, tin on termination end, with entire contact nickel underplated

Receptacles

Shell Size	# of Contact Positions	Contact Finish	Standard Mounting Screws	Female Screwlocks
1	9	A	5745112-2	5747020-2
		B	-	5747020-1
3	25	A	5745114-2	5745536-2
4	37	A	5745115-2	-
5	50	A	5745116-2	5747193-2
		B	5745116-1	5747193-1

1. All plugs are preloaded with size 20 DF posted pin contacts.
2. Recommended PC boards thickness is 0.93 [2.36] max.
3. Male screw retainers are used as mating hardware for connectors with 4-40 female screwlocks.

HD-20 FRONT METAL SHELL RIGHT ANGLE POSTED CONNECTOR 590 MOUNT

MATERIALS

Front Shell: Steel, tin plated

Housing: 94V-0 rated thermoplastic, black

Eyelets: Brass, tin plated

Threaded Inserts: Zinc

Female Screwlocks: Zinc

Boardlocks: Copper alloy, tin plated

Pin Contacts (Posted): Phosphor bronze, duplex plated as follows:

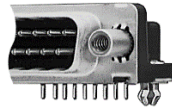
- A: .000030 gold plating on mating end, tin on termination end, with entire contact nickel underplated
- B: Gold flash on mating end, tin on termination end, with entire contact nickel underplated

Shell Size	# of Contact Positions	Contact Finish	Without Boardlocks	With Boardlocks	
			Threaded Inserts	Threaded Inserts	Fixed Female Screwlocks
1	9	A	5745990-4	5747832-4	5747832-6
		B	5745990-3	-	-
2	15	A	-	-	5747833-6
3	25	A	-	5747834-4	-
4	37	A	-	5747835-4	5747835-6

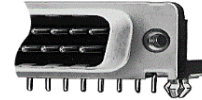
HD-20 FRONT METAL SHELL RIGHT ANGLE POSTED CONNECTOR 590 MOUNT



Plug with Grounding Indents and Grounding Straps



Plug with Fixed Female Screwlocks



Plug with Threaded Inserts

MATERIALS

Front Shell: Steel, tin plated

Housing: 94V-0 rated thermoplastic, black

Eyelets: Brass, tin plated

Threaded Inserts: Zinc

Female Screwlocks: Zinc

Boardlocks: Copper alloy, tin plated

Pin Contacts (Posted): Phosphor bronze, duplex plated as follows:

- A: .000030 gold plating on mating end, tin on termination end, with entire contact nickel underplated
- B: Gold flash on mating end, tin on termination end, with entire contact nickel underplated

Shell Size	# of Contact Positions	Contact Finish	Without Boardlocks		With Boardlocks	
			Threaded Inserts	Fixed Female Screwlocks	Threaded Inserts	Fixed Female Screwlocks
1	9	A	5745988-4	5745988-6	5747836-4	5747836-6
2	15	A	5745984-4	-	5747837-4	-
3	25	A	-	5745992-6	5747838-4	-
		B	5745992-3	-	5747838-3	-
4	37	A	5745996-4	-	5747839-4	-

- All plug connectors are preloaded with size 20 DF posted pin contacts.
- Recommended PC board thickness is .062 [1.58] for connectors with boardlocks and .093 [2.36] max for others.
- Male screw retainers are used as mating hardware for connectors with 4-40 female screwlocks.

HD-20 ALL-PLASTIC RIGHT ANGLE POSTED CONNECTORS 318 MOUNT

*Consult TE Connectivity for all availability

MATERIAL AND FINISH

Housing: 94V-0 rated thermoplastic, black

Eyelets: Brass, tin plated

Threaded Inserts: Zinc

Female Screwlocks: Zinc

Boardlocks: Copper alloy, tin plated

Socket Contacts (Posted): Phosphor bronze, duplex plated as follows:

- A: .000030 gold plating on mating end, tin on termination end, with entire contact nickel underplated

Pin Contacts (Posted)- Copper alloy, duplex plated as follows:

- A: .000030 gold plating on mating end, tin on termination end, with entire contact nickel underplated

Shell Size	# of Contacts	Contact Finish	Threaded Inserts	Fixed Female Screwlocks
1	9	A	-	5748979-1
3	25	A	-	5748981-1

With Threaded Inserts

Shell Size	# of Contacts	Contact Finish	Boardlocks	Without Boardlocks
2	15	A	5748904-1	-
3	25	A	-	5748865-3

- All connectors are preloaded with size 20 DF posted contacts; plugs with pin contacts and receptacles with socket contacts
- .125 [3.18] post length is recommended for PC board thickness of .093 [2.36] max; .220 [5.59] post length is recommended for PC board thickness of .125 [3.18] max.
- All part numbers are RoHS compliant.

MATERIAL AND FINISH

Housing: 94V-0 rated thermoplastic, black

Threaded Inserts: Zinc, chromate coated

Female Screwlocks: Zinc, chromate coated

Socket Contacts (Posted): Phosphor bronze, duplex plated as follows:

A: .000030 gold plating on mating end, tin on termination end, with entire contact nickel underplated

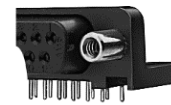
B: Gold flash on mating end, tin on termination end, with entire contact nickel underplated



With Threaded Insert



With Standard Mounting Holes



With Fixed Female Screwlocks

Shell Size	# of Contact Positions	Contact Finish	Threaded Inserts	Fixed Female Screwlocks	With .125 [3.18] Mounting Holes
1	9	A	5745394-2	5745395-2	
		B			5745131-1
2	15	A		5745396-2	5745396-2
3	25	A	5745392-2	5745397-2	5745132-2

1. All plug connectors are preloaded with size 20 DF posted socket contacts.
2. Recommended PC board thickness is .093 [2.36].
3. Male screw retainers are used as mating hardware for connectors with 4-40 female screwlocks.
4. All part numbers are RoHS compliant.

HD-20 ALL-PLASTIC RIGHT ANGLE POSTED CONNECTORS 590 MOUNT

MATERIAL AND FINISH

Housing: 94V-0 rated thermoplastic, black

Eyelets: Brass, tin plated

Threaded Inserts: Zinc

Female Screwlocks: Zinc

Boardlocks: Copper alloy, tin plated

Socket Contacts (Posted): Phosphor bronze, duplex plated as follows:

A: .000030 gold plating on mating end, tin on termination end, with entire contact nickel underplated

Shell Size	# of Contacts	Contact Finish	Boardlocks	Without Boardlocks
3	25	A	-	5748989-1

1. All receptacle connectors are preloaded with size 20 DF posted socket contacts.
2. Recommended PC board thickness is .062 [1.58].
3. Male screw retainers are used as mating hardware for connectors with 4-40 female screwlocks.
4. All part numbers are RoHS compliant.

MATERIAL AND FINISH

Housing: 9V-0 rated thermoplastic, black

Threaded Inserts: Zinc, chromate coated

Female Screwlocks: Zinc, chromate coated

Socket Contacts (Posted): Phosphor bronze, duplex plated as follows:

A: .000030 gold plating on mating end, tin on termination end, with entire contact nickel underplated

B: Gold flash on mating end, tin on termination end, with entire contact nickel underplated

Pin Contacts (Posted): Phosphor bronze, duplex plated as follows:

A: .000030 gold plating on mating end, tin on termination end, with entire contact nickel underplated

B: Gold flash on mating end, tin on termination end, with entire contact nickel underplated

Receptacle without Boardlocks

Shell Size	# of Contact Positions	Contact Finish	Threaded Inserts	Fixed Female Screwlocks	.125 [3.18] Mounting Holes
1	9	A	5747459-4	5747459-6	-
		B	-	5747459-5	-
2	15	A	-	-	-
		B	5747460-3	-	-
3	25	A	-	5747461-6	-
		B	5747461-3	5747461-5	-
4	37	A	5747462-4	-	5747462-2

MATERIAL AND FINISH

Housing: 9V-0 rated thermoplastic, black

Threaded Inserts: Zinc, chromate coated

Female Screwlocks: Zinc, chromate coated

Socket Contacts (Posted): Phosphor bronze, duplex plated as follows:

A: .000030 gold plating on mating end, tin on termination end, with entire contact nickel underplated

B: Gold flash on mating end, tin on termination end, with entire contact nickel underplated

Pin Contacts (Posted): Phosphor bronze, duplex plated as follows:

A: .000030 gold plating on mating end, tin on termination end, with entire contact nickel underplated

B: Gold flash on mating end, tin on termination end, with entire contact nickel underplated

Shell Size	# of Contact Positions	Contact Finish	Threaded Inserts	Fixed Female Screwlocks	.125 [3.18] Mounting Holes
1	9	A	5747467-4	-	5747467-2
		B	-	-	5747467-1
2	15	A	5748872-1	-	-
3	25	A	5748873-1	5748953-1	-
		B	-	-	-

1. All receptacle connectors are preloaded with size 20 DF posted socket contacts.
2. Recommended PC board thickness is .093 [2.36] max.
3. Male screw retainers are used as mating hardware for connectors with 4-40 female screwlocks.
4. Dimension 1.115 [28.32] for size 5 d-sub, GPL 244.
5. All part numbers are RoHS compliant.

HD-20 RIGHT ANGLE RECEPTACLE

# of Contact Positions	Mounting Hardware	PCB Mounting Style	Part Number
9	4-40 inserts	boardlocks	2301844-1
9	4-40 screwlocks	boardlocks	2301844-2
15	4-40 inserts	boardlocks	2301845-1
15	4-40 screwlocks	boardlocks	2301845-2
25	4-40 screwlocks	boardlocks	2301846-1

HD-20 RIGHT ANGLE PLUG

MATERIALS

Front Shell: 94V-0 rated thermoplastic, black

Housing: Black glass-filled polyester

Flammability: UL 94V-0

Contact Material:

Pin: Phosphor Bronze

Socket: Phosphor Bronze

Contact Area Plating: 0.76mm Gold Plating

Current Rating: 6A max.

Insulation Resistance: 5000 MΩ min.

Dielectric Strength: 1000V AC min.

Temperature Rating: -55 °C to +105 °C



Right Angle
Europe Solder

Plug with Boardlocks - Solder Termination

# of Contacts	3mm Hole	4-40 Inserts	4-40 Screwlocks	M3 Inserts
9	338168-2	1-338168-2	3-338168-2	2-338168-2
15	338169-2	1-338169-2	3-338169-2	2-338169-2
25	338170-2	1-338170-2	3-338170-2	2-338170-2

Plug without Boardlocks - Solder Termination

# of Contacts	3mm Hole	4-40 Inserts	4-40 Screwlocks
9	5-338168-2	6-338168-2	8-338168-2
15	5-338169-2	6-338169-2	8-338169-2
25	5-338170-2	6-338170-2	8-338170-2

Socket without Boardlocks - Solder Termination

# of Contacts	3mm Hole	4-40 Inserts	4-40 Screwlocks
9	5-106505-2	6-106505-2	8-106505-2
15	5-106506-2	6-106506-2	8-106506-2
25	5-106507-2	6-106507-2	8-106507-2

Sockets with Boardlocks - Solder Termination

# of Contacts	3mm Hole	4-40 Inserts	4-40 Screwlocks	M3 Inserts
9	106505-2	1-106505-2	3-106505-2	2-106505-2
15	106506-2	1-106506-2	3-106506-2	2-106506-2
25	106507-2	1-106507-2	3-106507-2	2-106507-2

RIGHT ANGLE MOUNTING CONNECTORS-EUROSTYLE FOOTPRINT

MATERIAL AND FINISH

Front Shell: Steel, tin plated

Housing: Grey thermoplastic PBTP

Flammability: UL 94V-0

Contact Material:

Pin: Copper alloy

Socket: Copper alloy

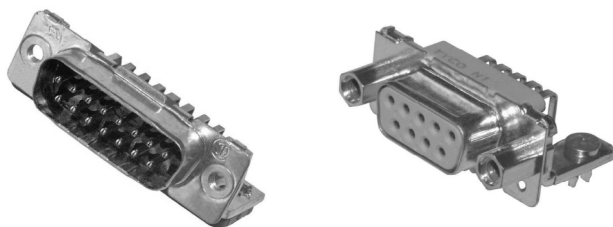
Contact Area Plating: Nickel/gold (>250 mating cycles)

Current Rating: 2.2A

Insulation Resistance: 5000 MΩ min.

Dielectric Strength: 1000V AC

Temperature Rating: -55 °C to +125 °C



Plug with Boardlocks - Solder Termination

# of Contacts	3mm Hole	4-40 Inserts	M3 Screwlocks
9	-	8-1393480-5	-
15	-	8-1393480-6	-
25	On Inquiry	8-1393480-7	-
37	On Inquiry	-	On Inquiry

Socket with Boardlocks - Solder Termination

# of Contacts	3mm Hole	4-40 Inserts	4-40 Screwlocks	M3 Screwlocks
9	-	-	9-1393480-9	-
37	On Inquiry	8-1393480-4	-	On Inquiry

Plug without Boardlocks - Solder Termination

# of Contacts	3mm Hole	4-40 Inserts	4-40 Screwlocks	M3 Inserts	M3 Screwlocks
9	2-1393480-1	-	-	-	On Inquiry
5	-	-	-	-	On Inquiry
25	-	-	-	-	On Inquiry
37	-	-	-	-	On Inquiry

Socket without Boardlocks - Solder Termination

# of Contacts	3mm Hole	4-40 Inserts	4-40 Screwlocks	M3 Inserts	M3 Screwlocks
9	-	3-1393480-6	-	-	On Inquiry
5	-	-	-	-	On Inquiry
25	-	-	-	-	On Inquiry
37	-	-	-	-	On Inquiry

RESOURCES:**PRODUCT SPECIFICATION**

108-1228
108-1226
108-40025
108-1092
108-57541

APPLICATION SPECIFICATION









114-40029
114-40015
114-40027
114-40010
114-40013
114-13198

INSTRUCTION SHEET

408-9427



Additional Resources

<p>AMPLIMITE Home Page</p> <p>CLICK TO EXPLORE OUR COMPLETE LINE OF AMPLIMITE D-SUBMINIATURE CONNECTORS </p>	<p>AMPLIMITE Cable Connector Accessories Quick Reference Guide</p> <p>CLICK TO DOWNLOAD THE DOCUMENT </p>
<p>AMPLIMITE Straight Posted Connectors Quick Reference Guide</p> <p>CLICK TO DOWNLOAD THE DOCUMENT </p>	<p>Amplimite D-Subminiature Stacked Pcb Connectors</p> <p>CLICK TO DOWNLOAD THE DOCUMENT </p>
<p>AMPLIMITE .050 Series Connectors Quick Reference Guide</p> <p>CLICK TO DOWNLOAD THE DOCUMENT </p>	<p>AMPLIMITE Accessory Parts</p> <p>CLICK TO DOWNLOAD THE DOCUMENT </p>
<p>AMPLIMITE Cable Connectors and Shielding Hardware Kits Quick Reference Guide</p> <p>CLICK TO DOWNLOAD THE DOCUMENT </p>	<p>AMPLIMITE Virtual Sample Kit</p> <p>CLICK TO DOWNLOAD THE DOCUMENT </p>

Connect With Us

We make it easy to connect with our experts and are ready to provide all the support you need. Visit te.com/support to chat with a Product Information Specialist.

TE Connectivity
Digital Data Networks

te.com

TE, TE Connectivity, TE connectivity (logo), and EVERY CONNECTION COUNTS are trademarks owned or licensed by the TE Connectivity plc family of companies. Other product names, logos, and company names mentioned herein may be trademarks of their respective owners. While TE has made every reasonable effort to ensure the accuracy of the information in this document, TE does not guarantee that it is error-free, nor does TE make any other representation, warranty or guarantee that the information is accurate, complete, correct, reliable or current. TE reserves the right to make any adjustments to the information contained herein at any time without notice. TE EXPRESSLY DISCLAIMS ALL IMPLIED WARRANTIES REGARDING THE INFORMATION CONTAINED HEREIN, INCLUDING, BUT NOT LIMITED TO, ANY IMPLIED WARRANTIES OF MERCHANTABILITY OR FITNESS FOR A PARTICULAR PURPOSE. In no event will TE be liable for any direct, indirect, incidental, special or consequential damages arising from or related to recipient's use of the information. It is the sole responsibility of recipient of this information to verify the results of this information using their engineering and product environment. Recipient assumes any and all risks associated with the use of the information. TE is a component manufacturer, and customer and/or end-user is responsible for all end-use compliance and regulatory requirements. These marketing materials do not constitute an offer or agreement of sale, and TE Connectivity shall be bound by and subject to only those terms and conditions set forth in a written agreement referencing specific products and signed by an authorized representative of TE.

©2026 TE Connectivity. All Rights Reserved.
03-26