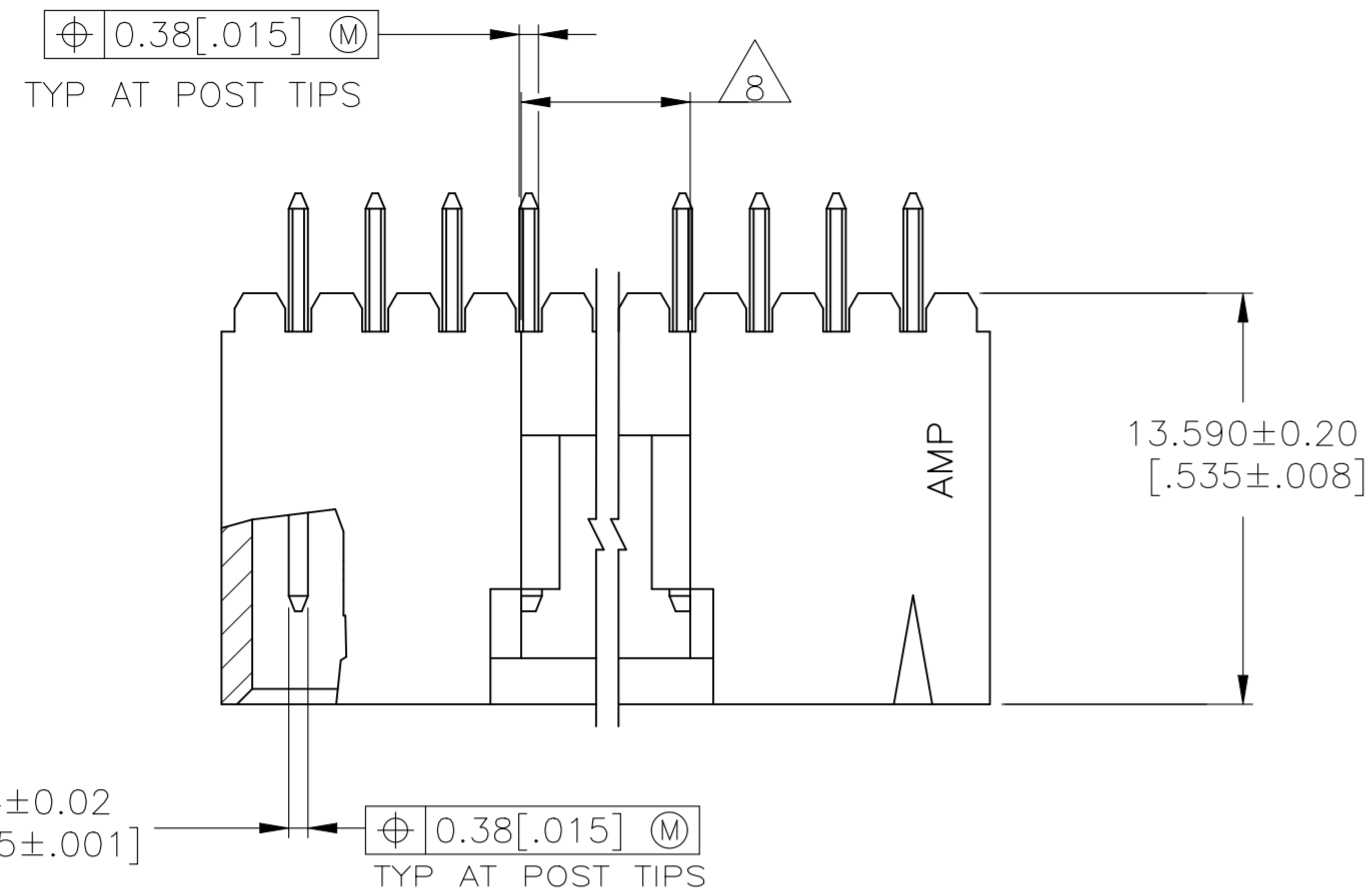
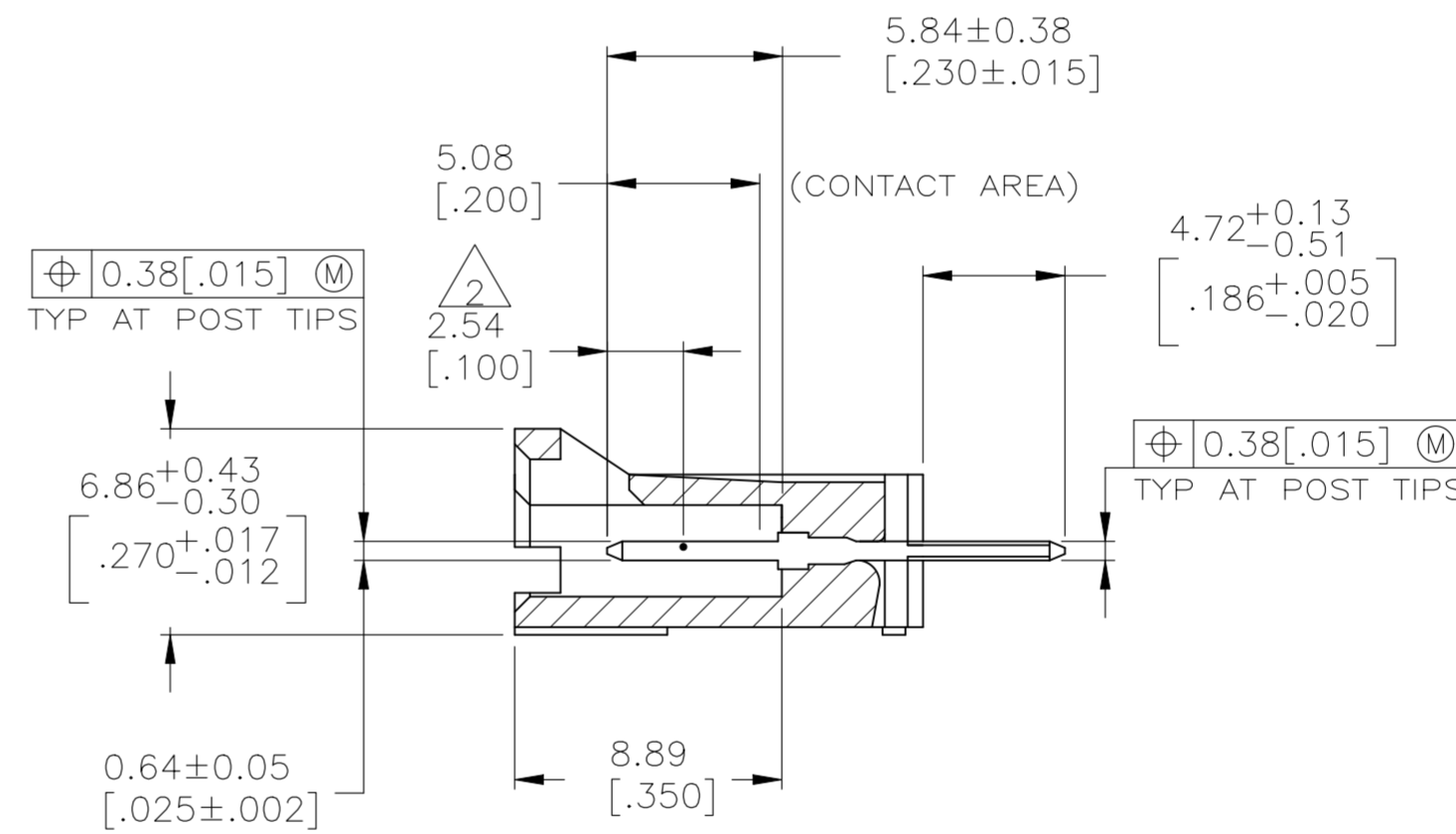
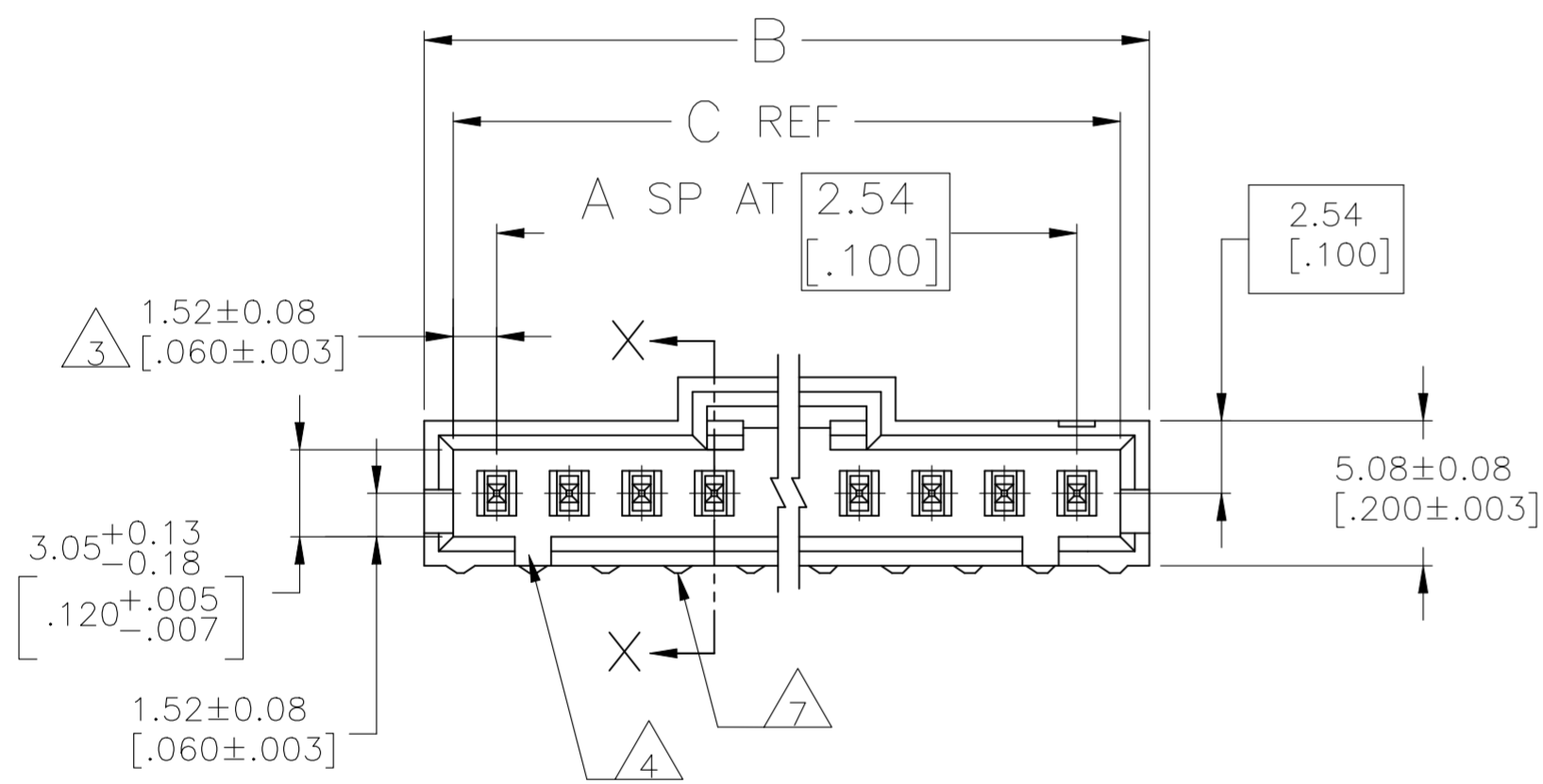


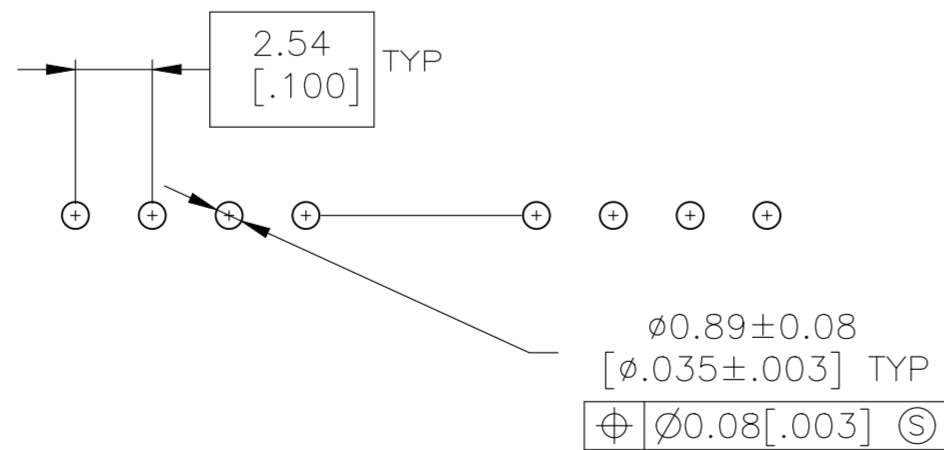
REVISIONS					
P	LTR	DESCRIPTION	DATE	DWN	APVD
H1		ECR-25-239014	11NOV2025	ABS	PS



- 1 .00038[.000015] GOLD IN THE CONTACT AREA, .00254[.000100] MATTE TIN-LEAD ON REMAINDER OF CONTACT, ALL OVER .00127[.000050] NICKEL.
- 2 POINT OF MEASUREMENT FOR PLATING THICKNESS.
- 3 THE NOTED DIMENSIONS APPLY AT THE INTERSECTION OF THE POST AND THE HOUSING.
- 4 ON ASSEMBLIES WITH FOUR OR MORE POSITIONS, TWO POLARIZATION SLOTS. ON ASSEMBLIES WITH TWO OR THREE POSITIONS, ONE POLARIZATION SLOT.
- 5 .00038[.000015] GOLD IN THE CONTACT AREA, .00254[.000100] MATTE TIN ON REMAINDER OF CONTACT, ALL OVER .00127[.000050] NICKEL.
- 6 HIGH TEMPERATURE CONFIGURATION.
- 7 STANDOFF NOT PRESENT ON UNDERSIDE OF ASSEMBLY
- 8 0.25 [.010] RECESS PERMISSIBLE IN THIS AREA FOR MOLD SHUT OFF



SECTION X-X



RECOMMENDED HOLE LAYOUT

OBSOLETE	6 7	5	13.21 [0.520]	15.11 [0.595]	4	5	5-104911-1
	6	1	13.21 [0.520]	15.11 [0.595]	4	5	104911-1
REMARKS	PLATING	C	B	A	NO. OF POSN	PART NO.	

THIS DRAWING IS A CONTROLLED DOCUMENT.		DWN E. BRANDBERG 13-6-94	TE Connectivity				
DIMENSIONS: mm [INCHES]		CHK J.GESFORD 13-6-94	NAME HDR ASSY, VERT, SINGLE ROW 2.54[.100] C/L,0.64[0.025]SQ POST, WITH PLZN&LATCHING, AMPMODU MTE				
TOLERANCES UNLESS OTHERWISE SPECIFIED:		APVD J.GESFORD 13-6-94	PRODUCT SPEC 108-25034	SIZE A2	CAGE CODE 00779	DRAWING NO C=104911	RESTRICTED TO -
MATERIAL: HOUSING: FLAME RETARDANT LCP, COLOR - BLACK CONTACTS: BRASS		FINISH SEE TABLE	APPLICATION SPEC 114-25026	WEIGHT -	SCALE 4:1	SHEET 1 OF 1	REV H1