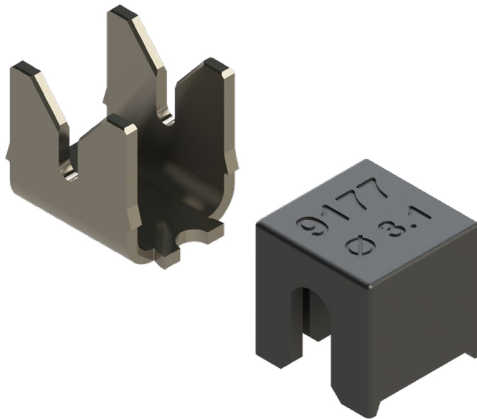


SINGLE IDC CONTACT 12-18 AWG: 9177-500



General Information



The 917X series of surface mount Insulation Displacement Connectors (IDC) were developed to meet the harsh requirements of automotive and industrial applications. This industry proven series of connectors provides a robust, reliable, and efficient method to connect individual wires ranging from 12 AWG to 30 AWG directly to a PCB. The single contact design can function as a standalone component. It provides our designers access to IDC technology in an easy-to-use form factor allowing them to bring power and signal to a PCB in a wide range of applications.

The 9177-500 series of IDC contacts are an extension of the popular 9176-400/500 series to accommodate 12 to 18 AWG solid or stranded wires. The Single IDC contacts have been tested to various levels of shock, vibration, and temperature cycling to prove their reliability and robustness. The simplicity of inserting a wire into an SMT contact with a small tool or optional retention / termination cap allows a wide range of devices to be connected to the PCB without soldering. The IDC contact provides a gas-tight connection to the wire and the optional cap provides a positive strain relief even in the harshest conditions. In case of repair, the wires can be removed and replaced up to three times.

APPLICATIONS

- Industrial motor controls, drives & pumps
- Commercial building wiring and electrical systems
- Outdoor/Transportation lighting
- Solar and alternative energy
- Application Notes: Refer to 201-01-209
- Product Specification: Refer to 201-01-208

FEATURES AND BENEFITS

- Proven “gas tight” cold welded wire termination
- Redundant contact systems provides enhanced wire retention and high current carrying capabilities
- Cost effective insulator-less contact system
- Optional termination cap provides additional strain relief for severe environments

ELECTRICAL

- Current Rating: 15 Amps / Contact
- Voltage Rating: 300 VAC (RMS) or DC Equivalent

ENVIRONMENTAL

- Operating Temperature: -40°C to +130°C
- Storage Temperature: -40°C to +70°C

MECHANICAL

- Cap Insulator Material, High Temperature Nylon, UL94V-0
- Contact Material: Phosphor Bronze
- Contact Plating: Pure tin over nickel
- Durability: 3 termination cycles

HOW TO ORDER – CONTACT OPTIONS

70	9177	001	5XX	006
Prefix	Series	No. of Ways 001 = 1	Description 591 = 12 AWG Stranded and Solid 501 = 14 AWG Stranded and Solid 512 = 16 AWG Stranded and Solid 522 = 18 AWG Stranded and Solid	Plating 006 = Pure Tin all over



SALES DRAWINGS
CLICK TO DOWNLOAD

Safety Standards: UL 1977-File #E90723, CSA C22.2 NO. 182.3



HOW TO ORDER – CAP OPTIONS

60	9177	001	5XX	X00
Prefix	Series	No. of Ways 001 = 1	Description (See Table Below)	Color 100 = White (Standard) 000 = Black (Special)

PARTNUMBER	DIM. A	TEXT	WIRE	COLOR
60-9177-001-542-100	3.90	ø 4.2	12 AWG	WHITE (STANDARD)
60-9177-001-542-000				BLACK (SPECIAL ORDER)
60-9177-001-531-100	2.75	ø 3.1	12 AWG	WHITE (STANDARD)
60-9177-001-531-000				BLACK (SPECIAL ORDER)
60-9177-001-526-100	2.25	ø 2.6	14 AWG	WHITE (STANDARD)
60-9177-001-526-000				BLACK (SPECIAL ORDER)
60-9177-001-522-100	1.90	ø 2.2	16 AWG	WHITE (STANDARD)
60-9177-001-522-000				BLACK (SPECIAL ORDER)
60-9177-001-519-100	1.65	ø 1.9	18 AWG	WHITE (STANDARD)
60-9177-001-519-000				BLACK (SPECIAL ORDER)

ASSEMBLY TOOLING

Wire Gauge	Max Insulation (Dimensions 'A')	Tool Number Metal Tool for High Volume	Tool Number Plastic Tool for Small to Medium Volume
12-18 AWG	ø 4.25	06-9177-7020-01-001	06-9177-7022-01-001
12-18 AWG	ø 3.50	06-9177-7020-02-001	06-9177-7022-02-001
12-18 AWG	ø 2.75	06-9177-7020-03-001	06-9177-7022-03-001