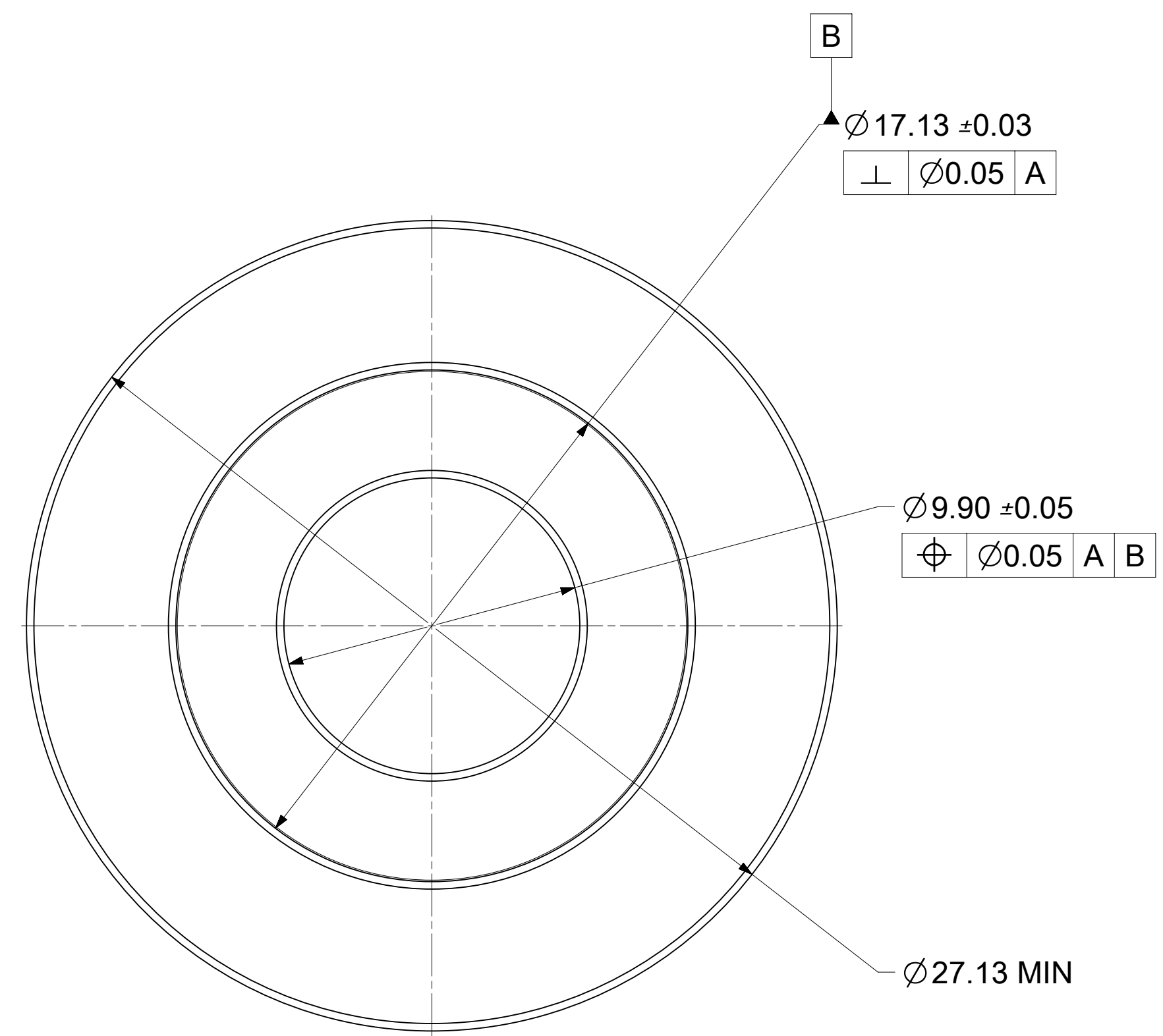
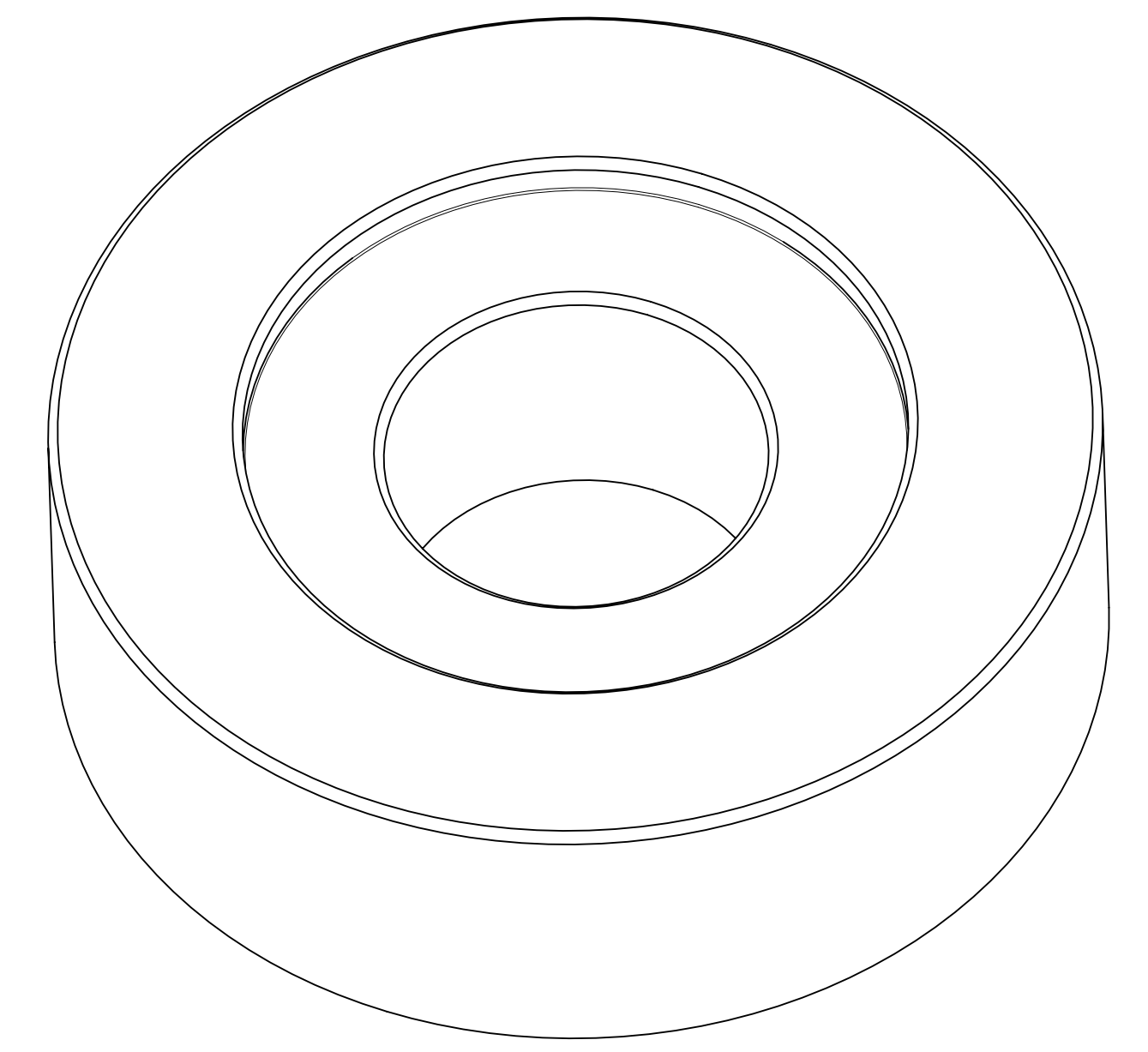
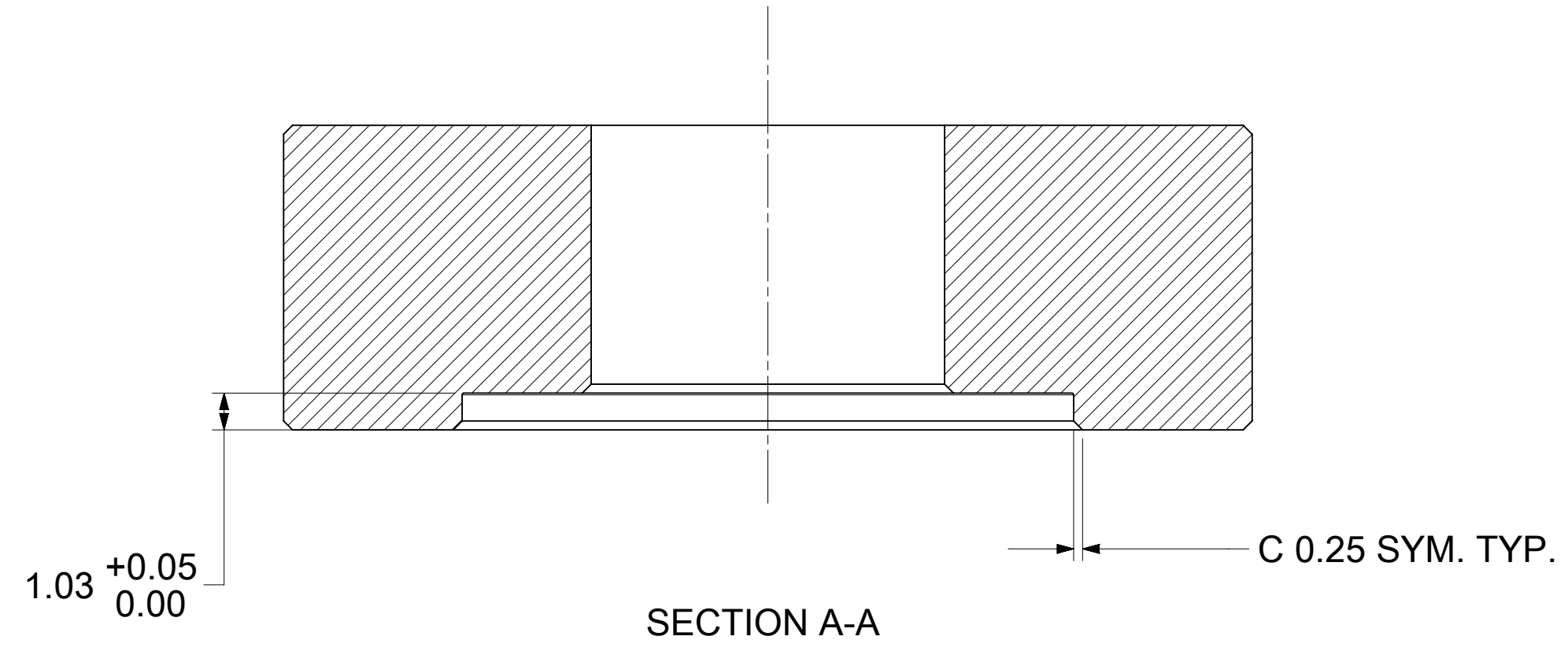
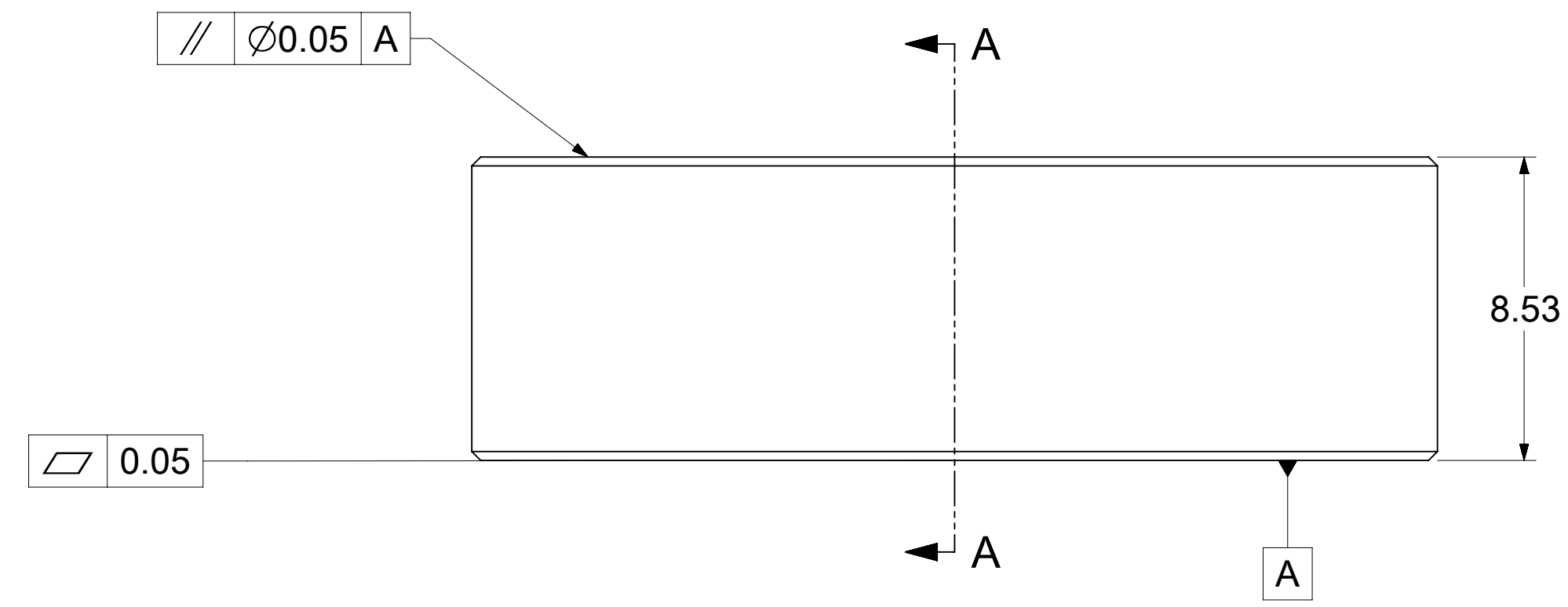


NOTES:

1. MATERIALS: COPPER ALLOY
RETENTION CAP: STAINLESS STEEL
2. PLATING:
 - i. CONTACT AREA: GOLD.
 - ii. REST AREA: SILVER WITH TARNISH INHIBITOR
3. MATES WITH THE STANDARD PIN DRAWINGS:
 - i. 3.4MM SMT DRAWING 2032631134-SD, MIN MATING DISTANCE 5.9MM
 - ii. 3.4MM PRESS FIT DRAWING 2032630034-SD, MIN MATING DISTANCE 6.15MM
4. PRODUCT SPECIFICATION: 2043130018-PS
5. APPLICATION SPECIFICATION: 2043130018-AS
6. PACKAGING SPECIFICATION: 2043130018-PK
7. SILVER COMPONENTS WILL BE SUPPLIED TARNISH FREE BUT MAY TARNISH OVER TIME.
8. DATE CODE TO BE LASER MARKED APPROXIMATELY WHERE SHOWN USING DDYY FORMAT

THIS DRAWING CONTAINS INFORMATION THAT IS PROPRIETARY TO MOLEX ELECTRONIC TECHNOLOGIES, LLC AND SHOULD NOT BE USED WITHOUT WRITTEN PERMISSION											
DIMENSION UNITS mm		SCALE NTS		CURRENT REV DESC: ADDED RECOMMENDED BUSBAR THICKNESS / SHORTENED PIN AT MATING PROFILE							
GENERAL TOLERANCES (UNLESS SPECIFIED)				EC NO: 832626							
ANGULAR TOL ± 0.5°				DRWN: CHETHH2 2024/07/17				3.4MM CENTRALITY TOP ENTRY PRESS-FIT SOCKET WITH FLOAT IN TRAY			
4 PLACES ±				CHK'D: SOURAJ 2026/01/14							
3 PLACES ±				APPR: HTHYAGARAJ 2026/02/03				PRODUCT CUSTOMER DRAWING			
2 PLACES ± 0.15				INITIAL REVISION:							
1 PLACE ± 0.25				DRWN: JJONIAK 2017/08/04				DOCUMENT NUMBER: 2043130018-SD DOC TYPE: PSD DOC PART: 000 REVISION: B3			
0 PLACES ±				APPR: BPISZCZOR 2019/05/30							
DRAFT WHERE APPLICABLE MUST REMAIN WITHIN DIMENSIONS		THIRD ANGLE PROJECTION		DRAWING: D-SIZE		SERIES: 204313		MATERIAL NUMBER: 2043130018		CUSTOMER: GENERAL MARKET	
SHEET NUMBER: 1 OF 1											



- NOTES:
1. MATERIAL: STAINLESS STEEL
 2. BREAK ALL SHARP CORNERS AND EDGES
 3. THE TOOL SHOULD BE FABRICATED BY THE CUSTOMER

THIS DRAWING CONTAINS INFORMATION THAT IS PROPRIETARY TO MOLEX ELECTRONIC TECHNOLOGIES, LLC AND SHOULD NOT BE USED WITHOUT WRITTEN PERMISSION									
DIMENSION UNITS mm		SCALE 6:1		CURRENT REV DESC: UPDATED THE NOTES					
GENERAL TOLERANCES (UNLESS SPECIFIED)				molex CENTRALITY APPLICATION TOOLING FOR 3.4MM SOCKET WITH FLOAT PRODUCT CUSTOMER DRAWING					
ANGULAR TOL		± 0.5°							
4 PLACES		±							
3 PLACES		±							
2 PLACES		± 0.05							
1 PLACE		± 0.1		EC NO: 813784		DRWN: SOURAJ 2024/12/05		2025/02/25	
0 PLACES		±		APPR: HTHYAGARAJ 2025/02/26		INITIAL REVISION:		2023/12/19	
DRAFT WHERE APPLICABLE MUST REMAIN WITHIN DIMENSIONS				THIRD ANGLE PROJECTION		DRAWING		SERIES	
DOCUMENT NUMBER		DOC TYPE		DOC PART		REVISION			
2192590113-SD		PSD		000		A1			
MATERIAL NUMBER		CUSTOMER		SHEET NUMBER					
2192590113		GENERAL MARKET		1 OF 1					