

EXTENDED RANGE

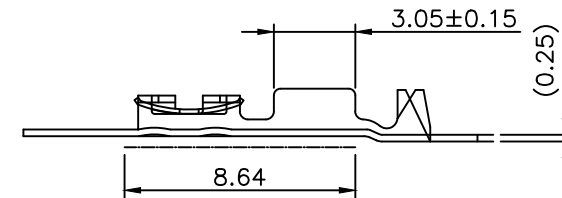
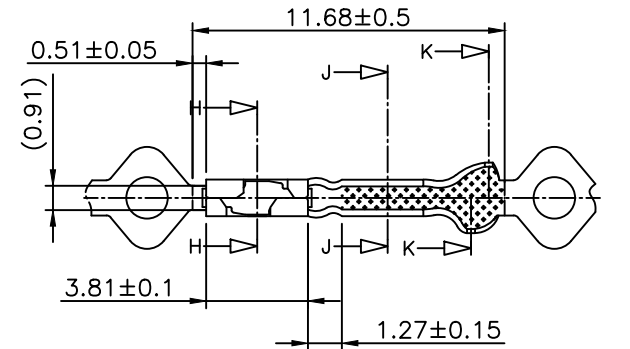
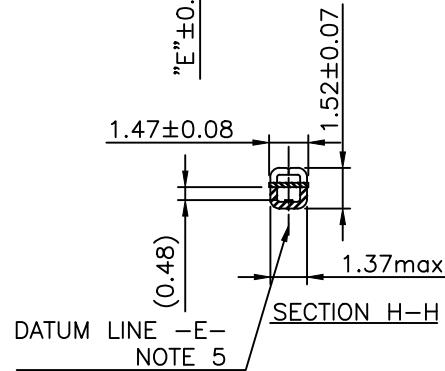
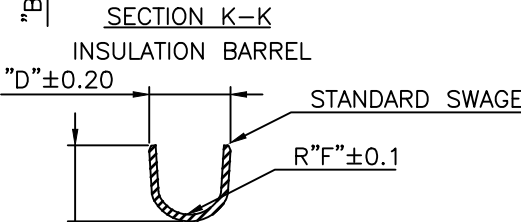
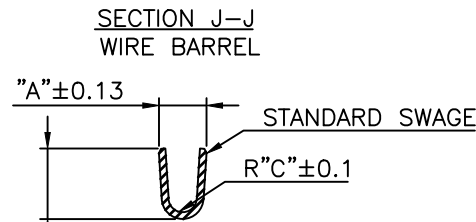
- TOOLING FEASIBILITY CONFIRMED
- SAMPLES ON DEMAND
- AVAILABILITY ON DEMAND

PRODUCT NO. (AS AVAILABLE)	PLATING CODE	AWG RANGE	SPRING THICKNESS
75231-032LF	A	22-26	0.17
75231-031LF	A	22-26	0.09
75231-030LF	A	22-26	0.12
75231-029LF	A	28-32	0.17
75231-028LF	A	28-32	0.12
75231-027LF	B	22-26	0.17
75231-026LF	B	22-26	0.09
75231-025LF	B	22-26	0.12
75231-024LF	B	28-32	0.17
75231-023LF	B	28-32	0.12
75231-015LF	C	22-26	0.17
75231-014LF	C	22-26	0.09
75231-013LF	C	22-26	0.12
75231-004LF	C	28-32	0.17
75231-003LF	C	28-32	0.09
75231-002LF	C	28-32	0.12

RoHS COMPATIBLE, SEE NOTE 9

AWG RANGE	WIRE BARREL			INSULATION BRL.			INSULATION RANGE
	A	B	C	D	E	F	
22-26	1.78	1.78	0.43	1.70	1.93	0.56	0.51-1.14
28-32	1.37	1.47	0.28	1.70	1.93	0.56	0.51-1.14

PLATING CODE	PLATING THICKNESS			UNDER LAYER
	CONTACT AREA	INSIDE BOX	REMAINDER	
A	0.76µm Au	0.2µm Au	GOLD FLASH	1.3µm Ni
B	1.0µm Au	0.2µm Au	GOLD FLASH	1.3µm Ni
C	1.0µm Au	0.2µm Au	0.2µm Au	1.3µm Ni



NOTES:

- MATERIAL BOX: BRASS ASTM B36, ALLOY C26000-H01.
- MATERIAL SPRING: BERYLLIUM COPPER ASTM B194, ALLOY C17200-TF00.
- PART TO BE LUBRICATED TO FACILITATE CRIMPING.
- MAXIMUM BURR ANY EDGE 0.08.
- BOTTOM SURFACE OF TERMINAL SHALL BE WITHIN 0.08 OVER 8.64 REF. LENGTH AS MEASURED ALONG DATUM LINE -E- ESTABLISHED AT C OF 1.37 DIMENSION PERFECT FORM NOT REQUIRED AT MMC.
- TAB CUT-OFF DIMENSION IS VERY CRITICAL WHEN USED IN CONJUNCTION WITH MINI-ROD AND MINI-LATCH HOUSING.
- PART TO MATE WITH 0.64±0.05 SQUARE PIN.
- APPLICATION SPECIFICATIONS:
BUS-20-025 PRODUCT SPECIFICATION.
- RoHS COMPATIBLE PRODUCT SPECIFICATIONS
 - a- PLATING:
- "LF" MEANS THE PRODUCT IS LEAD-FREE,
 - b- LABELING:
MEETS PACKAGING SPECS AS PER GS-14-920
 - c- LEGAL STATEMENT: SEE GS-22-008
- THIS PART SERIES IS NOT INITIALLY INTENDED FOR AUTOMOTIVE APPLICATIONS. ADDITIONAL FEES ARE CHARGEABLE FOR ANY ADDITIONAL QUALIFICATION AND TEST REPORTS PERFORMED OUTSIDE THE SCOPE OF THE STANDARD PRODUCT SPECIFICATIONS.
- UNLESS OTHERWISE APPROVED BY AMPHENOL, ALL PARTS AND COMPONENTS ARE DESIGNED & BUILT ACCORDING TO AMPHENOL'S SPECIFICATIONS WHICH ARE SUBJECT TO CHANGE WITHOUT NOTICE.

mat'l. code		surface		tolerance		projection		product family	
SEE NOTES		ISO 1302		ISO 406 ISO 1101		mm		BERGCON	
ltr	ecn no	dr	date	tolerances unless otherwise specified		mm		title	
J	---	DDE	25.03.13	angles	linear	.X ±0.3 .XX ±0.13 .XXX ±0.05		CTW MINI PV SMALL INSULATION	
D	F05-0286	DLE	05.11.07	0±2'		scale 3:1		dwg no	
E	F06-0217	DLE	06.07.11	dr	D.LEGRAND	05.08.30		sheet 1 of 1	
F	F06-0276	DLE	06.09.14	engr	P.NIZZI	05.08.30		size	
G	F08-0160	PNZ	08.04.21	chr	J.COMPAGNON	05.08.30		75231	
H	F-54568	DDE	25.02.10	appd	P.NIZZI	05.08.30		A3	
sheet	revision							type	
index	sheet							CUSTOMER Drawing	