

171551-1 ✓ ACTIVE



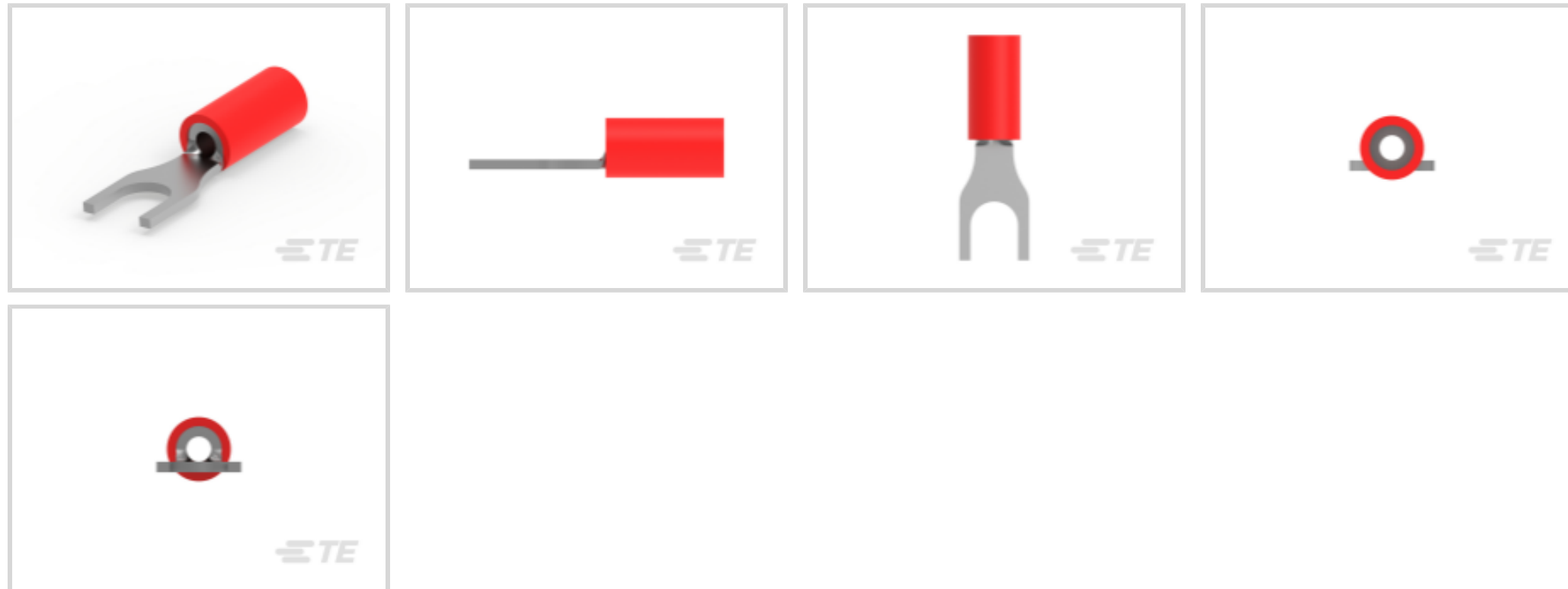
PLASTI-GRIP

TE Internal #: 171551-1

Spade Tongue Terminal, 22 – 18 AWG, #8 / M4 Stud Size, 4.3 mm [.169 in] Stud Diameter, Closed Barrel, Straight, Tin, Partially Insulated, PLASTI-GRIP

[View on TE.com >](#)

Terminals & Splices > Spade Terminals



Spade Terminal Type: **Spade Tongue Terminal**

Wire Size: **509 – 3260 CMA**

Stud Size: **#8, M4**

Features

Contact Features

| | |
|---------------------------|-----------------------|
| Spade Terminal Type | Spade Tongue Terminal |
| Barrel Type | Closed |
| Terminal Orientation | Straight |
| Terminal Plating Material | Tin |

Dimensions

| | |
|--------------------------------------|------------------------------|
| Wire Size | 509 – 3260 CMA |
| Stud Diameter | 4.3 mm[.169 in] |
| Tongue Thickness | .79 mm[.031 in] |
| Product Length | 22 mm[.866 in] |
| Compatible Insulation Diameter (Max) | 3.6 mm[.141 in] |
| Compatible Insulation Diameter Range | 2.7 – 3.6 mm[.106 – .141 in] |

Product Type Features

| | |
|--|--------------------|
| Stud Size | #8, M4 |
| Sealable | No |
| Wire Insulation Support Retention Type | Insulation Support |



Usage Conditions

| | |
|-----------------------------|---------------------|
| Insulation Option | Partially Insulated |
| Operating Temperature Range | 105 °C[221 °F] |

Operation/Application

| | |
|---------------------------------------|--------|
| Compatible With Wire Base Material | Copper |
| Compatible With Wire Plating Material | Tin |

Packaging Features

| | |
|--------------------|-----|
| Packaging Method | Bag |
| Packaging Quantity | 100 |

Other

| | |
|--------------------|-----------|
| EU RoHS Compliance | Compliant |
| EU ELV Compliance | Compliant |

Electrical Characteristics

| | |
|----------------|-------|
| Voltage Rating | 600 V |
|----------------|-------|

Mechanical Attachment

| | |
|-------------------------|---------|
| Wire Insulation Support | Without |
|-------------------------|---------|

Industry Standards

| | |
|-------------------------------|----|
| Government Qualified Terminal | No |
|-------------------------------|----|

Product Compliance

[For compliance documentation, visit the product page on TE.com>](#)

| | |
|---|---|
| EU RoHS Directive 2011/65/EU | Compliant |
| EU ELV Directive 2000/53/EC | Compliant |
| China RoHS 2 Directive MIIT Order No 32, 2016 | No Restricted Materials Above Threshold |
| EU REACH Regulation (EC) No. 1907/2006 | Current ECHA Candidate List: JUNE 2024 (241) Candidate List Declared Against: JUNE 2024 (241) Does not contain REACH SVHC |
| Halogen Content | Not Low Halogen - contains Br or Cl > 900 ppm. |
| Solder Process Capability | Not reviewed for solder process capability |

Product Compliance Disclaimer

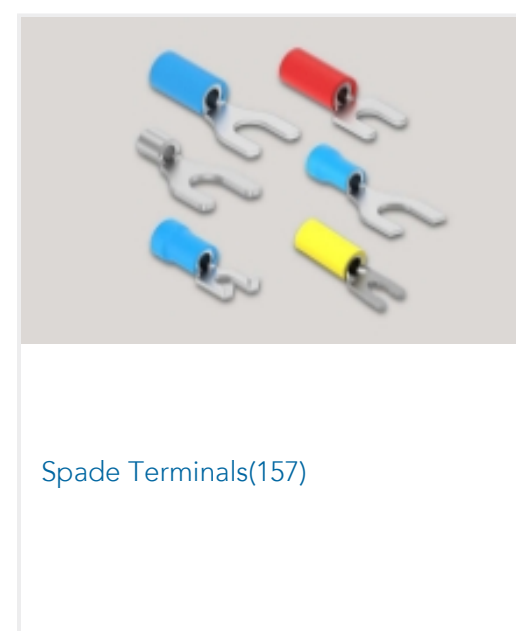
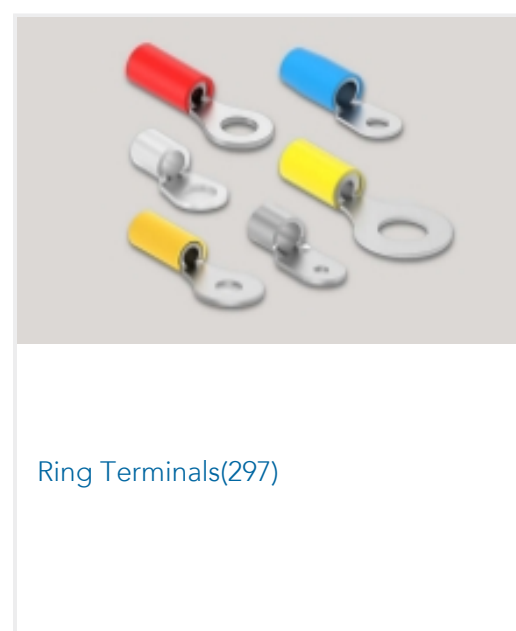
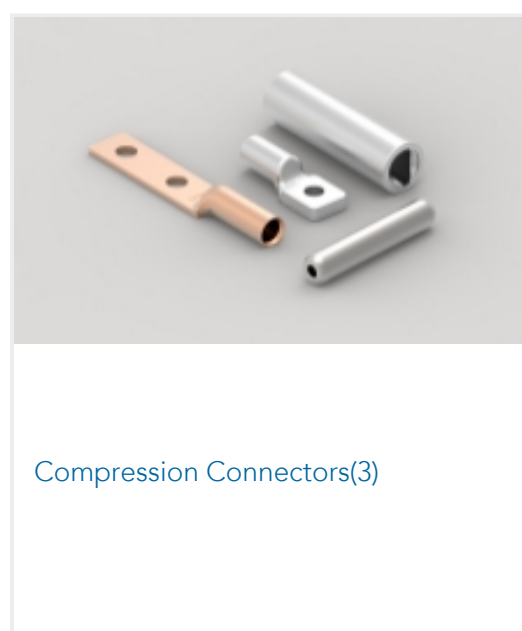


This information is provided based on reasonable inquiry of our suppliers and represents our current actual knowledge based on the information they provided. This information is subject to change. The part numbers that TE has identified as EU RoHS compliant have a maximum concentration of 0.1% by weight in homogenous materials for lead, hexavalent chromium, mercury, PBB, PBDE, DBP, BBP, DEHP, DIBP, and 0.01% for cadmium, or qualify for an exemption to these limits as defined in the Annexes of Directive 2011/65/EU (RoHS2). Finished electrical and electronic equipment products will be CE marked as required by Directive 2011/65/EU. Components may not be CE marked. Additionally, the part numbers that TE has identified as EU ELV compliant have a maximum concentration of 0.1% by weight in homogenous materials for lead, hexavalent chromium, and mercury, and 0.01% for cadmium, or qualify for an exemption to these limits as defined in the Annexes of Directive 2000/53/EC (ELV). Regarding the REACH Regulation, the information TE provides on SVHC in articles for this part number is based on the latest European Chemicals Agency (ECHA) 'Guidance on requirements for substances in articles' posted at this URL: <https://echa.europa.eu/guidance-documents/guidance-on-reach>

Compatible Parts



Also in the Series | PLASTI-GRIP





Splices(44)

Customers Also Bought



TE Part #34167
TERMINAL,PG SPD 16-14 10



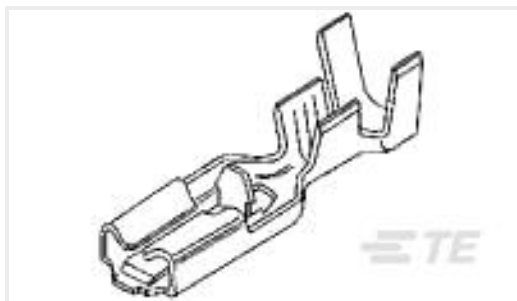
TE Part #34148
PG R 22-16 COMM 22-18 MIL 8



TE Part #170780-1
P.G RING UL.CSA(22-18)



TE Part #747521-2
HDP-20,OVRMLD RCPT SUBASSY,SIZ



TE Part #173691-1
PL 187 REC 20-16 AWG 0.3 X 14.0
PTBR



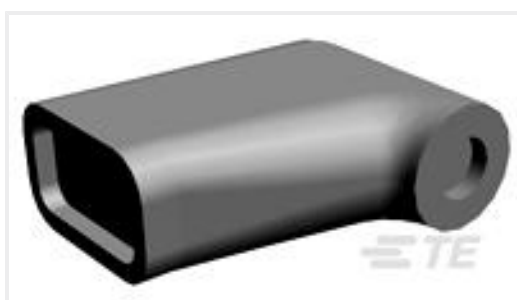
TE Part #3-87499-7
20 MODIV HSG SR MRKD .100CL



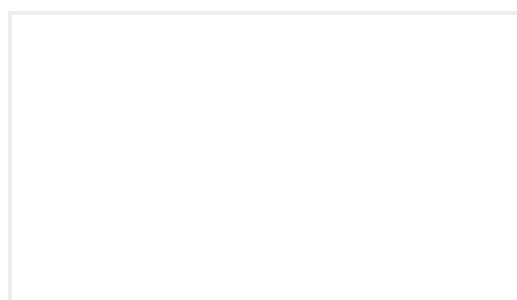
TE Part #171551-2
P.G SPADE



TE Part #1-1393030-4
SSRD-240D25 = PANEL MOUNT,25A,
240VAC



TE Part #170891-1
250 FASTON HSG.,FLAG,REC.,
NATRUAL



TE Part #913245-1
SPRING

Documents

Product Drawings

[P.G SPADE](#)

English

CAD Files

[3D PDF](#)

3D

Customer View Model

[ENG_CVM_CVM_171551-1_C.2d_dxf.zip](#)



English

Customer View Model

[ENG_CVM_CVM_171551-1_C.3d_igs.zip](#)

English

Customer View Model

[ENG_CVM_CVM_171551-1_C.3d_stp.zip](#)

English

By downloading the CAD file I accept and agree to the [Terms and Conditions](#) of use.

Product Specifications

[Application Specification](#)

English

Agency Approvals

[CSA Certificate](#)

English