

PRODUCT NUMBER
75160-YXX-XXLF

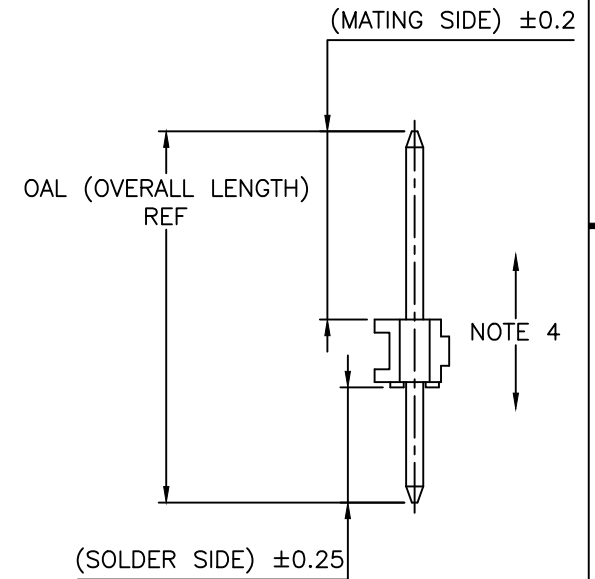
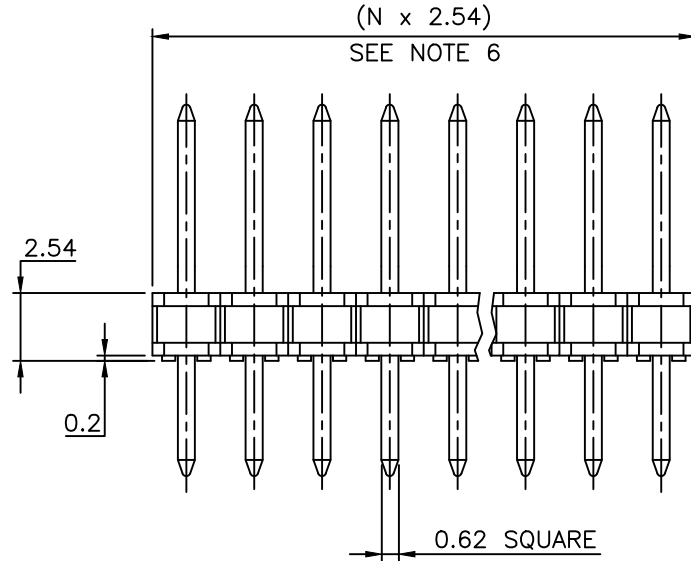
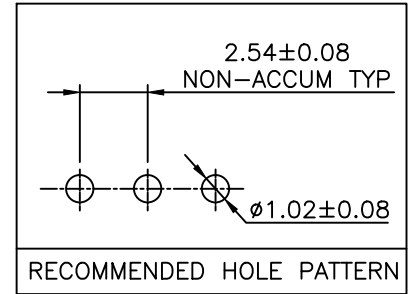
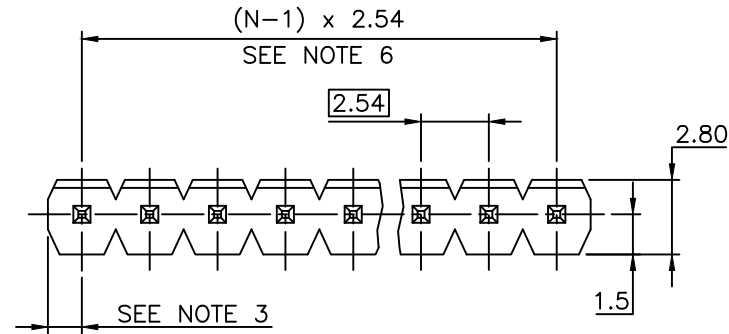
RoHS COMPLIANT & COMPATIBLE, SEE NOTE 8
TOTAL NB OF POSITIONS 02 TO 36
PIN STYLE, SEE SHEET 2

PLATING:

- 1 = 0.76µm FULL GOLD/GXT
- 3 = 2µm MIN MATTE TIN FULL PLATED
- 8 = 0.38µm FULL GOLD/GXT
- 1.27µm MIN NICKEL UNDERPLATING

NOTES:

1. HOUSING MATERIAL: HIGH TEMPERATURE THERMOPLASTIC FLAME RETARDANT PER UL94-V0, COLOR BLACK.
2. PIN MATERIAL: PHOSPHOR BRONZE.
3. DIM $1.27^{+0.03}_{-0.13}$ FOR MOULDED SIDE(S) ONLY. IF SIDE(S) ARE BROKEN, DIM 1.02 TO 1.7 MAX APPLIES.
4. PIN PUSH OUT FORCE: 12N MIN.
5. PRODUCT PACKAGED IN POLY BAGS.
6. TO DETERMINE DIMENSIONS:
N = NUMBER OF POSITIONS
EXAMPLE: 8 POS N x 2.54 = 20.32mm
7. FOR STANDARD SELECTIVE GOLD PLATED PRODUCTS, SEE DRAWING 77311.
8. RoHS COMPATIBLE PRODUCT SPECIFICATIONS
 - a - "LF" MEANS THE PRODUCT IS LEAD-FREE
 - b - MANUFACTURING PROCESS COMPATIBILITY
 - THE HOUSING WILL WITHSTAND EXPOSURE TO 260°C ±5°C SOLDER BATH TEMPERATURE FOR 5 SECONDS IN A WAVE SOLDER APPLICATION WITH A 1.6mm MIN THICK CIRCUIT BOARD.
 - c - LABELING:
 - MEETS PACKAGING SPECS AS PER GS-14-920
 - d - LEGAL STATEMENT: SEE GS-47-0004
9. THIS PART SERIES IS NOT INITIALLY INTENDED FOR AUTOMOTIVE APPLICATIONS. ADDITIONAL FEES ARE CHARGEABLE FOR ANY ADDITIONAL QUALIFICATION AND TEST REPORTS PERFORMED OUTSIDE THE SCOPE OF THE STANDARD PRODUCT SPECIFICATIONS.
10. UNLESS OTHERWISE APPROVED BY AMPHENOL, ALL PARTS AND COMPONENTS ARE DESIGNED & BUILT ACCORDING TO AMPHENOL'S SPECIFICATIONS WHICH ARE SUBJECT TO CHANGE WITHOUT NOTICE.



mat'l. code SEE NOTES				surface ISO 1302 ✓		tolerance ISO 406 ISO 1101		projection mm		product family BERGSTIK	
ltr	ecn no	dr	date	tolerances unless otherwise specified				title			
BR	F20607	LMU	03.12.03	angles	linear	.x ±0.3		HEADER SR STR			
BS	F03079	LMU	03.04.04			.xx ±0.15		2.54mm PITCH			
BT	F05-0186	JCO	05.04.29			.xxx ±0.05	scale 5:1	dwg no		sheet 1 of 2 size	
BU	F06-0196	LMU	06.06.20	dr	D.LEGRAND	02.01.15		75160		A3	
BV	F08-0148	JCO	08.05.27	engr	J.COMPAGNON	02.01.15		type		CUSTOMER Drawing	
BW	B-19264	LMU	14.10.31	chr	J.COMPAGNON	02.01.15					
BX	F-58756	DDE	25.12.24	appd	J.COMPAGNON	02.01.15					
sheet	revision	BX	BL								
index	sheet	1	2								

APPLICATION SPECIFIC

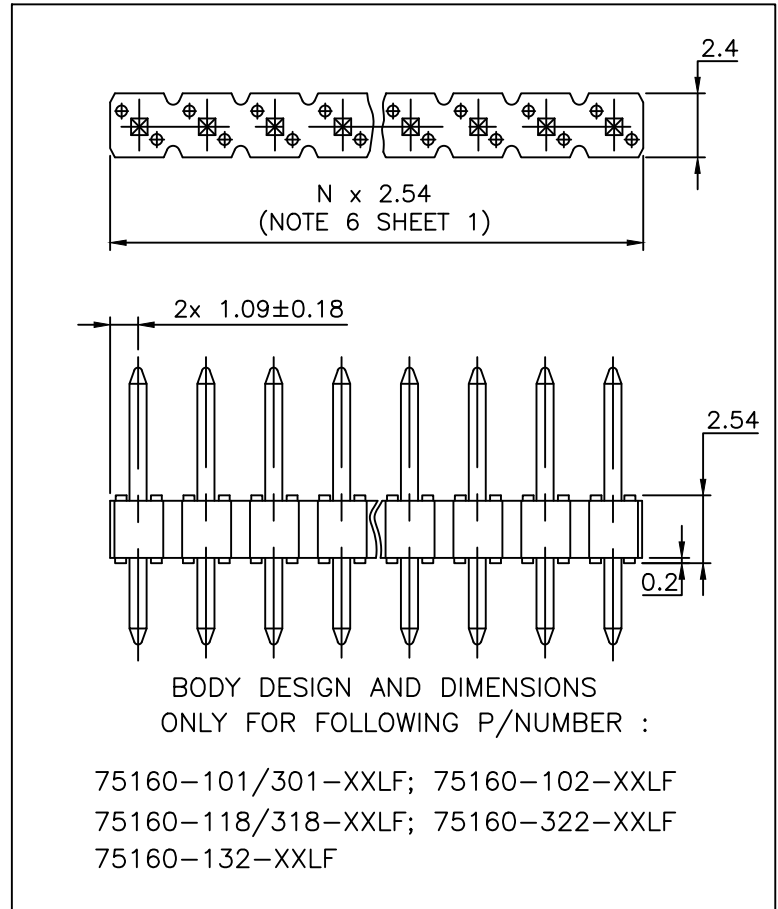
PIN	STYLE	MATING	SOLDER	OAL
01		5.72	2.54	10.8
02		5.84	3.43	11.81
03		5.72	5.09	13.34
04		5.72	7.62	15.88
05		5.72	10.16	18.42
06		5.72	12.7	20.96
07		5.72	15.24	23.5
08		5.72	17.78	26.04
09		5.72	20.32	28.58
10		5.72	22.86	31.12
11		5.72	5.97	14.22
12		5.72	8.51	16.76
13		5.72	11.05	19.3
14		5.72	16.13	24.38
15		8.51	2.54	13.59
16		8.51	5.51	16.56
17		8.51	10.59	21.64
18		5.72	3.05	11.3
19		12.83	3.05	18.42
20		15.37	3.05	20.96
21		20.45	3.05	26.04
22		7.75	3.05	13.34
23		5.84	4.95	13.34
24		7.21	3.05	12.8
25		8.51	3.18	14.22
26		15.57	2.84	20.96

APPLICATION SPECIFIC

PIN	STYLE	MATING	SOLDER	OAL
27		6.6	2.67	11.81
28		6.6	4.19	13.34
29		17.53	3.43	23.5
30		22.61	3.43	28.58
31		8.2	2.84	13.59
32		10.29	3.05	15.88
35		25.21	3.37	31.12
38		5.84	3.81	12.19
39		11.17	3.05	16.76
41		4.99	2.8	10.33
43		6.98	4.8	14.32
44		12.27	3.35	18.16
46		8.08	2.72	13.34
48		5.84	2.42	10.8
50		5.84	3.12	11.5
56		5.72	3.05	11.3
61		16.61	3.2	22.35
62		13.5	3.05	19.09
70		6.54	3.5	12.57
73		28.40	3.18	34.12
75		16.47	10.30	29.31
79		3.3	3.3	9.14
80		8.07	2.2	12.81
90		1.9	3.56	8
95		15.96	4	22.50
96		5.84	3.43	11.81

APPLICATION SPECIFIC

PIN	STYLE	MATING	SOLDER	OAL
97		7.75	3.05	13.34
98		10.29	3.05	15.88



BODY DESIGN AND DIMENSIONS
ONLY FOR FOLLOWING P/NUMBER :

75160-101/301-XXLF; 75160-102-XXLF
75160-118/318-XXLF; 75160-322-XXLF
75160-132-XXLF

mat'l. code SEE P/N				surface ISO 1302 ✓		tolerance ISO 406 ISO 1101		projection mm		product family BERGSTIK	
ltr	ecn no	dr	date	tolerances unless otherwise specified				title		sheet 2 of - size	
BH	F05-0186	JCO	05.04.29	angles	linear	.x ±0.3	mm		HEADER STR SR		A3
BJ	F06-0196	LMU	06.06.20			.xx ±0.15	scale 5:1		2.54mm PITCH		
BK	B-19264	LMU	14.10.31			.xxx ±0.05			dwg no		
BL	F-58756	DDE	25.12.24	dr	L.MULIN	99.04.07			75160		
				engr	J.COMPAGNON	99.04.07			CUSTOMER		
BF	F20607	LMU	03.12.03	chr	J.COMPAGNON	99.04.07			Drawing		
BG	F03079	LMU	03.04.04	appd	J.COMPAGNON	99.04.07					
sheet index	revision										
	sheet										