



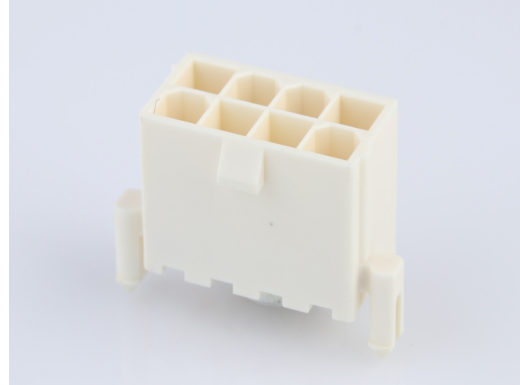
Part Number : [1724470708](#)

Product Description : Mini-Fit Versa Color Header, Dual Row, Vertical, with Snap-in Plastic Peg PCB Lock, 8 Circuits, Nylon 6/6, UL 94V-0, Tin (Sn) Plating, Glow-Wire Capable, Natural

Series Number : 172447

Status : Active

Product Category : PCB Headers and Receptacles



Documents & Resources

Drawings

[1724470708_sd.pdf](#)

3D Models and Design Files

[1724470708_stp.zip](#)

Specifications

[1722990000-AS-000.pdf](#)


[PS-5556-001-001.pdf](#)

[TS-5556-002-001.pdf](#)

[TS-5566-002-001.pdf](#)

Product Environment Compliance

Compliance

GADSL/IMDS	Not Relevant
China RoHS	
EU ELV	Not Relevant
Low-Halogen Status	Not Low-Halogen per IEC 61249-2-21
REACH SVHC	Not Contained per D(2024)4144-DC (27 June 2024)
EU RoHS	Compliant per EU 2015/863

Multiple Part Product Compliance Statements

- Eu RoHS

- REACH SVHC

- Low-Halogen

Multiple Part Industry Compliance Documents

- IPC 1752A Class C
- IPC 1752A Class D
- Molex Product Compliance Declaration
- IEC-62474
- chemSHERPA (xml)

EU RoHS Certificate of Compliance

Part Details

General

Status	Active
Category	PCB Headers and Receptacles
Series	172447
Description	Mini-Fit Versa Color Header, Dual Row, Vertical, with Snap-in Plastic Peg PCB Lock, 8 Circuits, Nylon 6/6, UL 94V-0, Tin (Sn) Plating, Glow-Wire Capable, Natural
Application	Power, Wire-to-Board
Component Type	PCB Header
Product Name	Mini-Fit Versa Color
UPC	195842051089

Agency

UL	E29179
----	--------

Electrical

Current - Maximum per Contact	9.0A
Voltage - Maximum	600V AC (RMS)/DC

Physical

Breakaway	No
Circuits (Loaded)	8
Circuits (maximum)	8
Color - Resin	Natural
Durability (mating cycles max)	30

First Mate / Last Break	No
Flammability	94V-0
Glow-Wire Capable	Yes
Guide to Mating Part	No
Keying to Mating Part	Yes
Lock to Mating Part	Yes
Material - Metal	Brass
Material - Plating Mating	Tin
Material - Resin	Nylon
Net Weight	2.744/g
Number of Rows	2
Orientation	Vertical
Packaging Type	Tray
PCB Locator	Yes
PCB Retention	Yes
PCB Thickness - Recommended	1.60mm
Pitch - Mating Interface	4.20mm
Pitch - Termination Interface	4.20mm
Polarized to Mating Part	Yes
Polarized to PCB	Yes
Shrouded	Fully
Stackable	No
Temperature Range - Operating	-40° to +105°C
Termination Interface Style	Through Hole

Mates With / Use With

Mates with Part(s)

Description	Part Number
Mini-Fit Jr. Dual Row Receptacle Housings	<u>46992</u>