



AMPMODU | AMPMODU HE 13/HE 14

TE Internal #: 281839-6

Housing, Receptacle, Wire-to-Board, 12 Position, 2.54 mm [.1 in]
Centerline, Insulation Displacement (IDC), 2 Row, Blue, AMPMODU
HE 13/HE 14

[View on TE.com >](#)

Connectors > PCB Connectors > Wire-to-Board Connectors > Wire-to-Board Connector Assemblies & Housings > HE13/HE14 Crimp Housings



Connector Product Type: **Housing**

Connector & Housing Type: **Receptacle**

Connector System: **Wire-to-Board**

Number of Positions: **12**

Centerline (Pitch): **2.54 mm [.1 in]**

[All HE13/HE14 Crimp Housings \(16\)](#)

Features

Product Type Features

Connector Product Type	Housing
Connector & Housing Type	Receptacle
Connector System	Wire-to-Board
Sealable	No
Connector & Contact Terminates To	Wire & Cable

Configuration Features

Number of Positions	12
Number of Rows	2

Housing Features

Centerline (Pitch)	2.54 mm [.1 in]
Housing Material	PBT GF
Housing Entry Configuration	Both Ends Closed



Termination Features

Termination Method to Wire & Cable	Insulation Displacement (IDC)
------------------------------------	-------------------------------

Dimensions

Row-to-Row Spacing	2.54 mm [.1 in]
Connector Height	15 mm [.591 in]
Wire Size	28 – 24 AWG
Connector Length	15.24 mm [.6 in]

Body Features

Primary Product Color	Blue
-----------------------	------

Mechanical Attachment

Mating Retention	With
Strain Relief	Without
Panel Mount Feature	Without
PCB Mount Retention	Without

Contact Features

Contact Current Rating (Max)	3 A
Contact Layout	Inline
Contact Base Material	Phosphor Bronze
Contact Type	Socket

Operation/Application

Circuit Application	Signal
---------------------	--------

Usage Conditions

Operating Temperature Range	-55 – 125 °C [-67 – 257 °F]
-----------------------------	-----------------------------

Other

EU RoHS Compliance	Compliant
EU ELV Compliance	Compliant

Industry Standards

UL Flammability Rating	UL 94V-0
Glow Wire Rating	Standard Part - Not Glow Wire

Packaging Features

Packaging Method	Package
------------------	---------



Packaging Quantity

500

Product Compliance

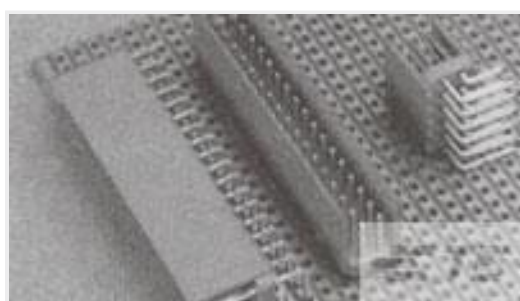
[For compliance documentation, visit the product page on TE.com>](#)

EU RoHS Directive 2011/65/EU	Compliant
EU ELV Directive 2000/53/EC	Compliant
China RoHS 2 Directive MIIT Order No 32, 2016	No Restricted Materials Above Threshold
EU REACH Regulation (EC) No. 1907/2006	Current ECHA Candidate List: JUNE 2024 (241) Candidate List Declared Against: JUNE 2024 (241) Does not contain REACH SVHC
Halogen Content	Not Low Halogen - contains Br or Cl > 900 ppm.
Solder Process Capability	Not applicable for solder process capability

Product Compliance Disclaimer

This information is provided based on reasonable inquiry of our suppliers and represents our current actual knowledge based on the information they provided. This information is subject to change. The part numbers that TE has identified as EU RoHS compliant have a maximum concentration of 0.1% by weight in homogenous materials for lead, hexavalent chromium, mercury, PBB, PBDE, DBP, BBP, DEHP, DIBP, and 0.01% for cadmium, or qualify for an exemption to these limits as defined in the Annexes of Directive 2011/65/EU (RoHS2). Finished electrical and electronic equipment products will be CE marked as required by Directive 2011/65/EU. Components may not be CE marked. Additionally, the part numbers that TE has identified as EU ELV compliant have a maximum concentration of 0.1% by weight in homogenous materials for lead, hexavalent chromium, and mercury, and 0.01% for cadmium, or qualify for an exemption to these limits as defined in the Annexes of Directive 2000/53/EC (ELV). Regarding the REACH Regulation, the information TE provides on SVHC in articles for this part number is based on the latest European Chemicals Agency (ECHA) 'Guidance on requirements for substances in articles' posted at this URL: <https://echa.europa.eu/guidance-documents/guidance-on-reach>

Compatible Parts



TE Part # 281739-6
HEADER HE14 STRAIGHT 2X6 P



TE Part # CAT-AM74-H3401C
HE13/HE14 TH Headers, DRRA

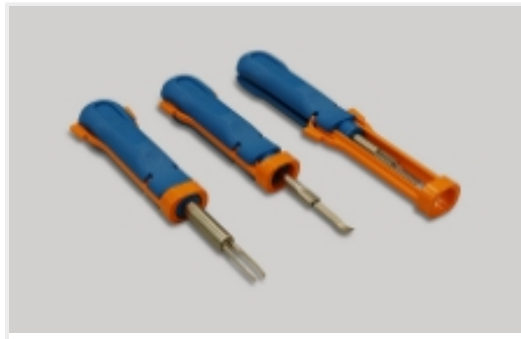


TE Part # CAT-AM74-H3401E
HE13/HE14 Contacts

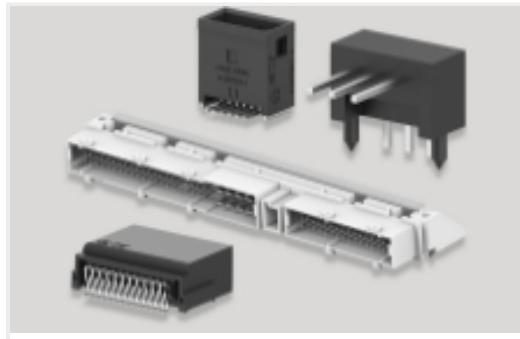
Also in the Series | [AMPMODU HE 13/HE 14](#)



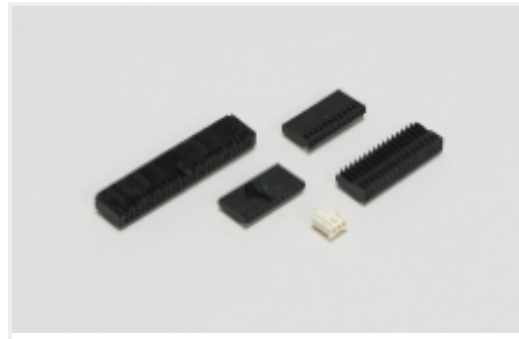
Connector Contacts(4)



Insertion & Extraction Tools(1)

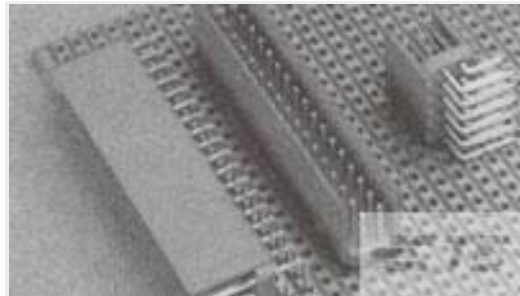


PCB Headers & Receptacles(66)



Wire-to-Board Connector Assemblies & Housings(58)

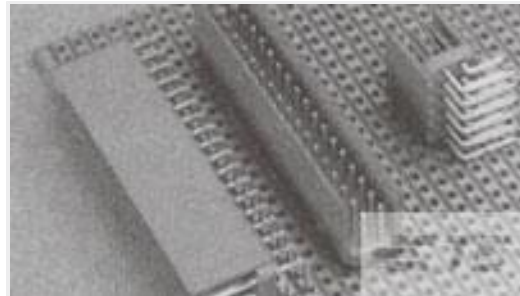
Customers Also Bought



TE Part #281739-3
HEADER HE14 STRAIGHT 2X3 P



TE Part #281839-3
HE13/HE14 Crimp Housings



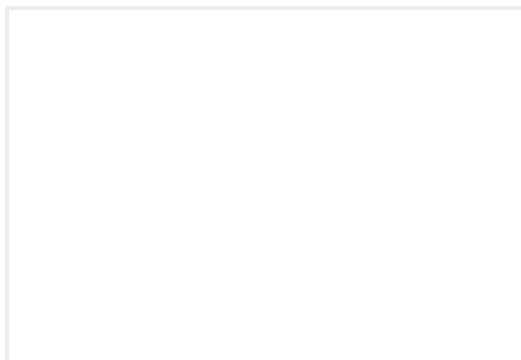
TE Part #281742-8
HEADER HE14 RA 2X8 P



TE Part #6-104910-5
16 MTE HDR SRST LATCH .100CL



TE Part #1SNG607016R0000
EP-LN-M40-LGR-A



TE Part #1-1393558-1
C42334A 422C320=BKMOD 422 BUEG

Documents

CAD Files

[3D PDF](#)

[3D](#)

Customer View Model

[ENG_CVM_CVM_281839-6_H.2d_dxf.zip](#)

English

Customer View Model

[ENG_CVM_CVM_281839-6_H.3d_igs.zip](#)

English

Customer View Model

[ENG_CVM_CVM_281839-6_H.3d_stp.zip](#)

English

By downloading the CAD file I accept and agree to the [Terms and Conditions](#) of use.

Product Specifications

[Product Specification](#)

French

281839-6

Housing, Receptacle, Wire-to-Board, 12 Position, 2.54 mm [.1 in] Centerline,
Insulation Displacement (IDC), 2 Row, Blue, AMPMODU HE 13/HE 14

