



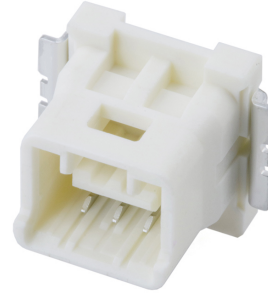
Part Number : [5033950310](#)

Product Description : 1.50mm Pitch, CLIK-Mate PCB Receptacle, Single Row, Surface Mount, Bottom Entry, Tin Plating, Positive Lock, 3 Circuits, Natural

Series Number : 503395

Status : Active

Product Category : PCB Headers and Receptacles



Documents & Resources

Drawings

[5033950310_sd.pdf](#)

3D Models and Design Files

[5033950310.dxf](#)

[5033950310.pdf](#)

[5033950310_stp.zip](#)

Specifications

[AS-503395-001-001.pdf](#)


[SPK-503395-001-001.pdf](#)

[5025780003-PS-000.pdf](#)

[5025781003-PS-000.pdf](#)

Product Environment Compliance

Compliance

GADSL/IMDS	Compliant with Exemption 44; 33
China RoHS	
EU ELV	Not Relevant
Low-Halogen Status	Not Low-Halogen per IEC 61249-2-21
REACH SVHC	Not Contained per D(2024)6225-DC (07 Nov 2024)
EU RoHS	Compliant per EU 2015/863

[Multiple Part Product Compliance Statements](#)

- Eu RoHS

- REACH SVHC

- Low-Halogen

Multiple Part Industry Compliance Documents

- IPC 1752A Class C

- IPC 1752A Class D

- Molex Product Compliance Declaration

- IEC-62474

- chemSHERPA (xml)

EU RoHS Certificate of Compliance

Part Details

General

Status	Active
Category	PCB Headers and Receptacles
Series	503395
Description	1.50mm Pitch, CLIK-Mate PCB Receptacle, Single Row, Surface Mount, Bottom Entry, Tin Plating, Positive Lock, 3 Circuits, Natural
Application	Signal, Wire-to-Board
Component Type	PCB Receptacle
Product Name	CLIK-Mate
UPC	883906843045

Agency

UL	E29179
----	--------

Electrical

Current - Maximum per Contact	2.0A
Voltage - Maximum	100V

Physical

Circuits (Loaded)	3
Circuits (maximum)	3
Color - Resin	Beige
Durability (mating cycles max)	30
Flammability	SC-0

Glow-Wire Capable	No
Guide to Mating Part	No
Keying to Mating Part	None
Lock to Mating Part	Yes
Material - Metal	Copper Alloy
Material - Plating Mating	Tin
Material - Plating Termination	Tin
Net Weight	553.000/mg
Number of Rows	1
Orientation	Bottom Entry
Packaging Type	Embossed Tape on Reel
PCB Locator	No
PCB Retention	Yes
PCB Thickness - Recommended	1.60mm, 2.40mm
Pitch - Mating Interface	1.50mm
Pitch - Termination Interface	1.50mm
Polarized to Mating Part	Yes
Polarized to PCB	Yes
Temperature Range - Operating	-40° to +105°C
Termination Interface Style	Surface Mount

Mates With / Use With

Mates with Part(s)

Description	Part Number
1.50mm Pitch CLIK-Mate Single Row Plug Housings	<u>502578</u>
1.50mm Pitch CLIK-Mate-to-CLIK-Mate Off-the-Shelf (OTS) Cable Assemblies	<u>15135</u>