



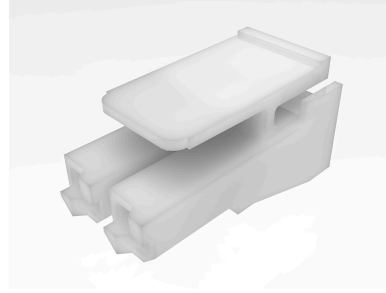
Part Number : [444411002](#)

Product Description : 7.50mm Pitch Sabre Receptacle Crimp Housing, UL 94V-2, 2 Circuits, Natural

Series Number : 44441

Status : Active

Product Category : Connector Housings



---

## Documents & Resources

### Drawings

[444411002\\_sd.pdf](#)

[PK-43468-XXXX-001.pdf](#)

### 3D Models and Design Files

[444411002\\_stp.zip](#)

### Specifications

[PK-44441-001-001.pdf](#)

[PS-44441-9999-001.pdf](#)

[444410000-TS-000.pdf](#)

---

## Product Environment Compliance

### Compliance

GADSL/IMDS	Not Relevant
China RoHS	
EU ELV	Not Relevant
Low-Halogen Status	Low-Halogen per IEC 61249-2-21
REACH SVHC	Not Contained per D(2024)6225-DC (07 Nov 2024)
EU RoHS	Compliant per EU 2015/863

### Multiple Part Product Compliance Statements

- Eu RoHS
- REACH SVHC
- Low-Halogen

### Multiple Part Industry Compliance Documents

- IPC 1752A Class C

- IPC 1752A Class D
- Molex Product Compliance Declaration
- IEC-62474
- chemSHERPA (xml)

EU RoHS Certificate of Compliance

---

## Part Details

### General

Status	Active
Category	Connector Housings
Series	44441
Description	7.50mm Pitch Sabre Receptacle Crimp Housing, UL 94V-2, 2 Circuits, Natural
Application	Power, Wire-to-Board, Wire-to-Wire
Comments	Positive mating lock and integrated Terminal Position Assurance (TPA) standard.
Product Name	Sabre
UPC	822348670574

### Agency

UL	E29179
----	--------

### Physical

Circuits (maximum)	2
Color - Resin	Natural
Flammability	94V-2
Gender	Receptacle
Glow-Wire Capable	No
Keying to Mating Part	Yes
Lock to Mating Part	Yes
Material - Resin	Nylon
Net Weight	1.852/g
Number of Rows	1
Packaging Type	Bag
Panel Mount	No

Pitch - Mating Interface	7.50mm
Polarized to Mating Part	Yes
Stackable	No
Temperature Range - Operating	-40° to +75°C

### Solder Process Data

Lead-Free Process Capability	N/A
------------------------------	-----

### Mates With / Use With

#### Mates with Part(s)

Description	Part Number
7.50mm Pitch Sabre Plug Crimp Housing, UL 94V-2, 2 Circuits, Natural	<u>436801002</u>
Sabre Headers	<u>43160</u>
Sabre Right-Angle Headers	<u>46007</u>

#### Use with Part(s)

Description	Part Number
Sabre Female Crimp Terminals	<u>43375</u>