

PRODUCT NUMBER

71978-YXXLF

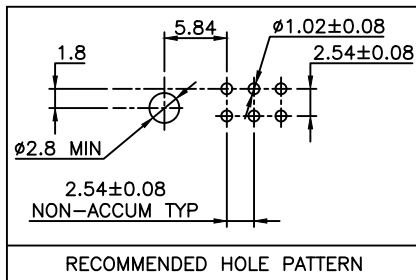
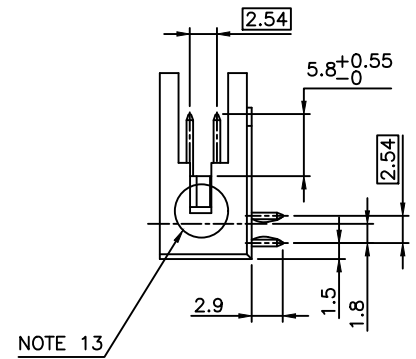
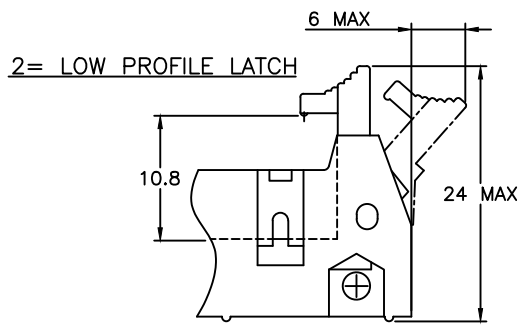
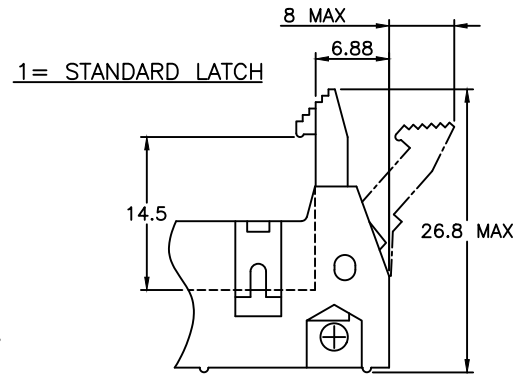
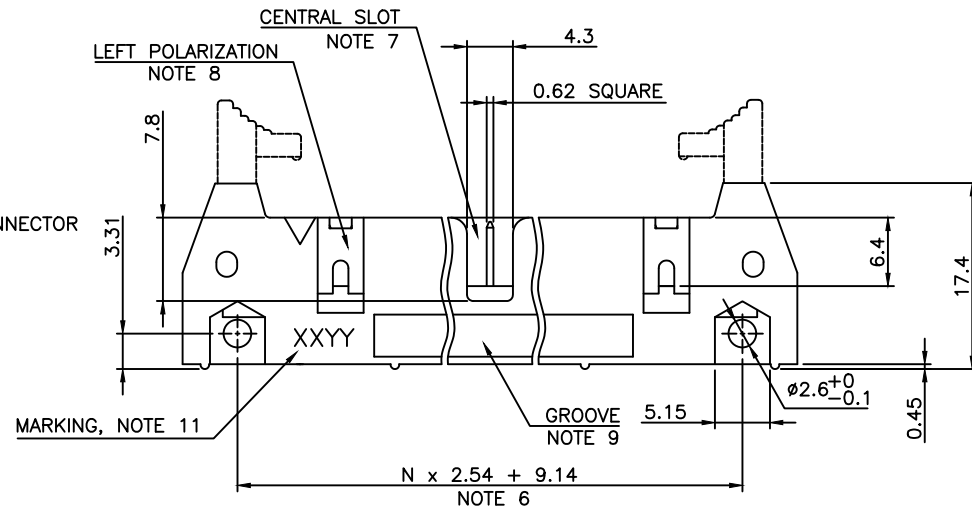
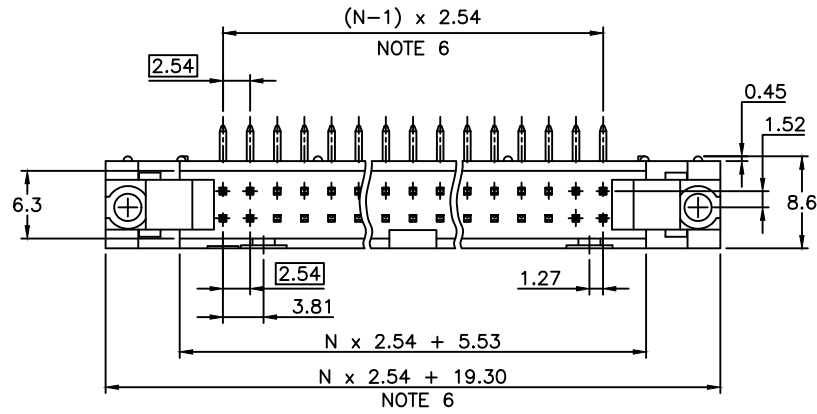
RoHS COMPATIBLE, SEE NOTE 12

LATCHING  
 0= WITHOUT LATCH  
 1= STANDARD LATCH  
 2= LOW PROFILE LATCH

TOTAL NUMBER OF POSITIONS	
06	26
08	34
10	40
14	44
16	50
18	60
20	64

NOTES:

- HOUSING MATERIAL : GLASS FILLED THERMOPLASTIC. UL94V-0 COLOR: BLUE
- PIN MATERIAL : PHOSPHOR BRONZE
- 0.76µm GOLD/GXT (PdNi WITH GOLD FLASH) ON CONTACT AREA  
2µm MIN MATTE TIN ON TAIL.  
UNDERPLATE : 1.27µm Ni MIN
- PRODUCT PACKED IN TUBES
- 40N MIN LATCH RETENTION FORCE AT FIRST EXTRACTION
- TO DETERMINE DIMENSIONS :  
N = NUMBER OF POSITIONS PER ROW  
EXAMPLE : 8 POS N x 2.54 = 20.32mm
- NO CENTRAL SLOT ON POSITIONS 6 & 8
- NO LEFT POLARIZATION ON POSITIONS 06, 08, 10, 14.
- NO GROOVE ON POSITIONS 06, 08, 10, 14, 30, 34
- RETENTION LEGS LOCATED IN THE CENTER OF THE CONNECTOR
- MARKING : XX = YEAR CODE  
YY = WEEK NUMBER
- RoHS COMPATIBLE PRODUCT SPECIFICATIONS
  - PLATING:  
- "LF" MEANS THE PRODUCT IS LEAD-FREE, 2µm MINIMUM MATTE TIN OVER 1.27µm MINIMUM NICKEL UNDERPLATE.
  - MANUFACTURING PROCESS COMPATIBILITY  
- THE HOUSING WILL WITHSTAND EXPOSURE TO 260°C ±5°C SOLDER BATH TEMPERATURE FOR 5 SECONDS IN A WAVE SOLDER APPLICATION WITH A 1.6mm MIN THICK CIRCUIT BOARD.
  - LABELING:  
- MEETS PACKAGING SPECS AS PER GS-14-920
  - LEGAL STATEMENT: SEE GS-47-0004
- COSMETIC CRACKS ALLOWED IN THIS AREA
- THIS PART SERIES IS NOT INITIALLY INTENDED FOR AUTOMOTIVE APPLICATIONS. ADDITIONAL FEES ARE CHARGEABLE FOR ANY ADDITIONAL QUALIFICATION AND TEST REPORTS PERFORMED OUTSIDE THE SCOPE OF THE STANDARD PRODUCT SPECIFICATIONS.
- UNLESS OTHERWISE APPROVED BY AMPHENOL, ALL PARTS AND COMPONENTS ARE DESIGNED & BUILT ACCORDING TO AMPHENOL'S SPECIFICATIONS WHICH ARE SUBJECT TO CHANGE WITHOUT NOTICE.



mat'l. code		surface	tolerance	projection	product family
SEE NOTES		ISO 1302	ISO 406 ISO 1101		QUICKIE
ltr	ecn no	dr	date	title	
H	B-16860	LMU	14.01.27	SHR.EL.HEADER	
J	B-19093	LMU	14.10.16	R.A, RETENTION LEGS	
K	F-286405	DDE	26.04.16	dwg no	
		dr	O.MATHEVON	95.11.28	sheet 1 of 1
		engr	JM.PHAMVAN	95.11.28	size
		chr	L.MULIN	04.12.20	A3
		appd	J.COMPAGNON	04.12.22	type
				CUSTOMER	Drawing
sheet	revision				
index	sheet				

Amphenol FCI FCIconnect.com

Copyright FCI

