

1742999-2 ✓ ACTIVE

FASTON | FASTON 250

TE Internal #: 1742999-2

Receptacle, 18 – 14 AWG Wire Size, .82 – 2.08 mm<sup>2</sup> Wire Size,

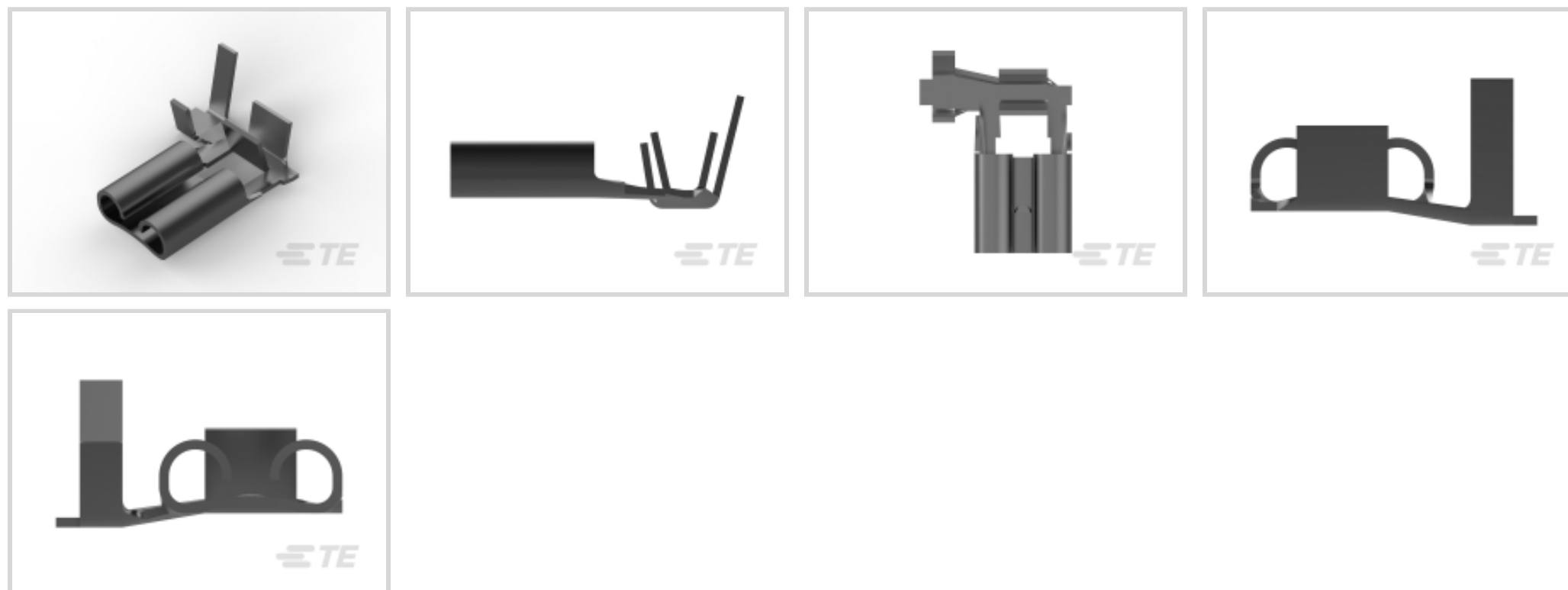
Mating Tab Width 6.35 mm [.25 in], Flag, Brass, FASTON 250, Quick

Disconnects

[View on TE.com >](#)



Terminals & Splices > Quick Disconnects



Quick Disconnect Terminal Type: **Receptacle**

Wire Size: **.82 – 2.08 mm<sup>2</sup>**

Mating Tab Width: **6.35 mm [.25 in]**

Mating Tab Thickness: **.81 mm [.032 in]**

## Features

### Contact Features

|                                |                  |
|--------------------------------|------------------|
| Quick Disconnect Terminal Type | Receptacle       |
| Mating Tab Width               | 6.35 mm [.25 in] |
| Mating Tab Thickness           | .81 mm [.032 in] |
| Terminal Orientation           | Flag             |
| Contact Base Material          | Brass            |
| Terminal Plating Material      | Tin              |
| Crimp Type                     | F-Crimp          |
| Barrel Type                    | Open             |

### Dimensions

|                                      |                               |
|--------------------------------------|-------------------------------|
| Wire Size                            | .82 – 2.08 mm <sup>2</sup>    |
| Product Length                       | 15.34 mm [.604 in]            |
| Compatible Insulation Diameter Range | 2.79 – 4.06 mm [.11 – .16 in] |
| Terminal Material Thickness          | .41 mm [.016 in]              |

### Packaging Features

|                  |            |
|------------------|------------|
| Packaging Method | Strip/Reel |
|------------------|------------|



|                    |      |
|--------------------|------|
| Packaging Quantity | 9000 |
|--------------------|------|

### Product Type Features

|                 |     |
|-----------------|-----|
| Insertion Force | Low |
|-----------------|-----|

### Usage Conditions

|                   |             |
|-------------------|-------------|
| Insulation Option | Uninsulated |
|-------------------|-------------|

|                             |                            |
|-----------------------------|----------------------------|
| Operating Temperature Range | -40 – 110 °C[-40 – 230 °F] |
|-----------------------------|----------------------------|

### Other

|                    |           |
|--------------------|-----------|
| EU RoHS Compliance | Compliant |
|--------------------|-----------|

|                   |           |
|-------------------|-----------|
| EU ELV Compliance | Compliant |
|-------------------|-----------|

### Configuration Features

|                                   |               |
|-----------------------------------|---------------|
| Compatible With Wire & Cable Type | Discrete Wire |
|-----------------------------------|---------------|

|                     |        |
|---------------------|--------|
| Connection Capacity | Single |
|---------------------|--------|

### Termination Features

|                       |              |
|-----------------------|--------------|
| Product Terminates To | Wire & Cable |
|-----------------------|--------------|

### Mechanical Attachment

|                         |      |
|-------------------------|------|
| Wire Insulation Support | With |
|-------------------------|------|

|                       |        |
|-----------------------|--------|
| Mating Retention Type | Dimple |
|-----------------------|--------|

### Industry Standards

|   |    |
|---|----|
| Compatible With Agency/Standards Products | UL |
|---|----|

## Product Compliance

[For compliance documentation, visit the product page on TE.com>](#)

|                              |           |
|------------------------------|-----------|
| EU RoHS Directive 2011/65/EU | Compliant |
|------------------------------|-----------|

|                             |           |
|-----------------------------|-----------|
| EU ELV Directive 2000/53/EC | Compliant |
|-----------------------------|-----------|

|   |   |
|---|---|
| China RoHS 2 Directive MIIT Order No 32, 2016 | No Restricted Materials Above Threshold |
|---|---|

|  |   |
|--|---|
| EU REACH Regulation (EC) No. 1907/2006 | Current ECHA Candidate List: JUNE 2024 (241)<br>Candidate List Declared Against: JUNE 2024 (241)<br>Does not contain REACH SVHC |
|--|---|

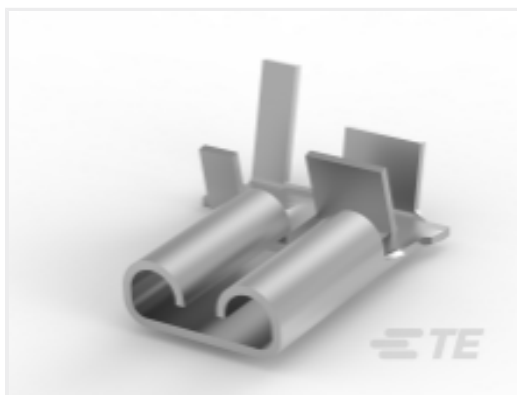
|                 |   |
|-----------------|---|
| Halogen Content | Low Halogen - Br, Cl, F, I < 900 ppm per homogenous material. Also BFR/CFR/PVC Free |
|-----------------|---|

|                           |  |
|---------------------------|--|
| Solder Process Capability | Not reviewed for solder process capability |
|---------------------------|--|

Product Compliance Disclaimer

This information is provided based on reasonable inquiry of our suppliers and represents our current actual knowledge based on the information they provided. This information is subject to change. The part numbers that TE has identified as EU RoHS compliant have a maximum concentration of 0.1% by weight in homogenous materials for lead, hexavalent chromium, mercury, PBB, PBDE, DBP, BBP, DEHP, DIBP, and 0.01% for cadmium, or qualify for an exemption to these limits as defined in the Annexes of Directive 2011/65/EU (RoHS2). Finished electrical and electronic equipment products will be CE marked as required by Directive 2011/65/EU. Components may not be CE marked. Additionally, the part numbers that TE has identified as EU ELV compliant have a maximum concentration of 0.1% by weight in homogenous materials for lead, hexavalent chromium, and mercury, and 0.01% for cadmium, or qualify for an exemption to these limits as defined in the Annexes of Directive 2000/53/EC (ELV). Regarding the REACH Regulation, the information TE provides on SVHC in articles for this part number is based on the latest European Chemicals Agency (ECHA) 'Guidance on requirements for substances in articles' posted at this URL: <https://echa.europa.eu/guidance-documents/guidance-on-reach>

### Compatible Parts



TE Part # 1742999-3  
250 FASTON, FLAG, REC., 18-14 AWG, TPBR



TE Part # 2150398-2  
OCEAN\_2.0 APPLICATOR- E- 100F180O-SEA



TE Part # 7-2150398-7  
OCEAN\_2.0 SPARE\_PART\_KIT- 100F180O

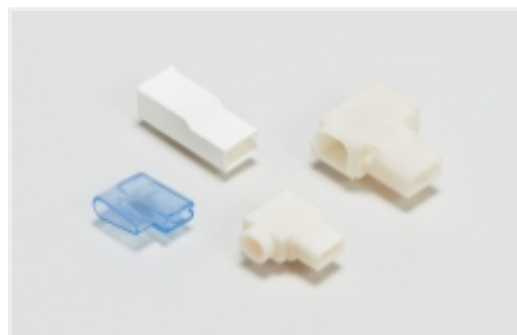


TE Part # 881006-2  
.375 FASTON FLAG RE

### Also in the Series | FASTON 250



Compression Connectors(4)



Crimp Terminal Housings(132)



Insertion & Extraction Tools(6)



Magnet Wire Terminals(1)



PCB Terminals(134)



Quick Disconnects(425)



Splices(4)

### Customers Also Bought



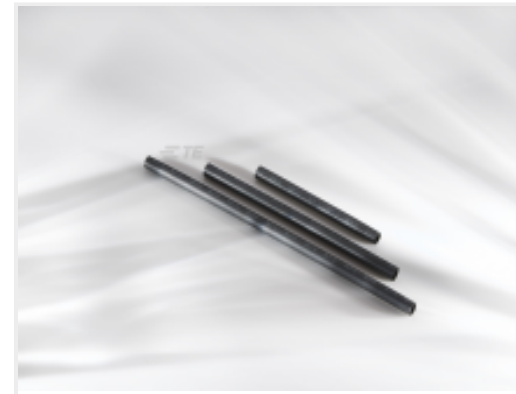
TE Part #5-1971772-2  
POWER TRIPLE LOCK High  
Temperature Caps



TE Part #1971778-3  
PTL TPA HIGH TEMP 2 x 3 BLACK



TE Part #60196-2  
187 FASTON REC 20-16 AWG TPBR



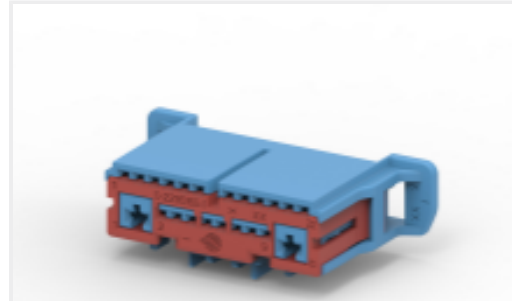
TE Part #F82626-000  
SCT-NO.2-E5-0-40MM



TE Part #41808  
RING TERMINAL 10-8 AWG TPCU



TE Part #1452842-3  
22 POS FEMALE HSG ASSY



TE Part #2295163-3  
22POS,MIXED,REC HSG,ASSY



TE Part #2295163-4  
22POS,MIXED,REC HSG,ASSY



TE Part #60487-1  
187 FASTON REC 18-16 AWG BR

## Documents

### Product Drawings

[250 FASTON,FLAG,REC.,18-14 AWG,TPBR](#)

English

### CAD Files

[3D PDF](#)

3D

Customer View Model

[ENG\\_CVM\\_CVM\\_1742999-2\\_A\\_c-1742999-2-a.2d\\_dxf.zip](#)

English

Customer View Model

[ENG\\_CVM\\_CVM\\_1742999-2\\_A\\_c-1742999-2-a.3d\\_igs.zip](#)

English

Customer View Model

[ENG\\_CVM\\_CVM\\_1742999-2\\_A\\_c-1742999-2-a.3d\\_stp.zip](#)

English

By downloading the CAD file I accept and agree to the [Terms and Conditions](#) of use.

### Datasheets & Catalog Pages



### [Introductory Flyer - Low Insertion Force FASTON Terminals](#)

English

---

### [Product Specifications](#)

#### [Application Specification](#)

English

---

### [Agency Approvals](#)

#### [UL Report](#)

English