



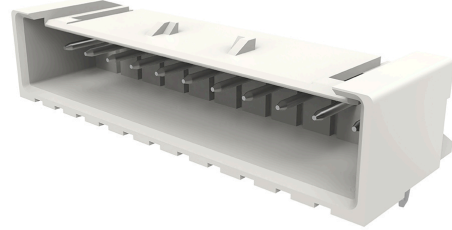
Part Number : [534269110](#)

Product Description : 2.50mm Pitch, Mini-Lock PCB Header, Single Row, Right-Angle, Through Hole with Kinked Pins, Tin Plating, Positive Lock, 11 Circuits, Tray, 3.40mm PC Tail Length, Glow-Wire Capable, Natural

Series Number : 53426

Status : Active

Product Category : PCB Headers and Receptacles



Documents & Resources

Drawings

[534269110_sd.pdf](#)

3D Models and Design Files

[534269110.dxf](#)

[534269110.pdf](#)

[534269110_stp.zip](#)

Specifications

[SPK-53426-002-001.pdf](#)

[511630000-PS-000.pdf](#)

[511631000-PS-000.pdf](#)

Product Environment Compliance

Compliance

| | |
|--------------------|---|
| GADSL/IMDS | Not Relevant |
| China RoHS | |
| EU ELV | Not Relevant |
| Low-Halogen Status | Not Low-Halogen per IEC 61249-2-21 |
| REACH SVHC | Not Contained per D(2024)4144-DC (27 June 2024) |
| EU RoHS | Compliant per EU 2015/863 |

Multiple Part Product Compliance Statements

- Eu RoHS

- REACH SVHC

- Low-Halogen

Multiple Part Industry Compliance Documents

- IPC 1752A Class C

- IPC 1752A Class D

- Molex Product Compliance Declaration

- IEC-62474

- chemSHERPA (xml)

EU RoHS Certificate of Compliance

Part Details

General

| | |
|----------------|--|
| Status | Active |
| Category | PCB Headers and Receptacles |
| Series | 53426 |
| Description | 2.50mm Pitch, Mini-Lock PCB Header, Single Row, Right-Angle, Through Hole with Kinked Pins, Tin Plating, Positive Lock, 11 Circuits, Tray, 3.40mm PC Tail Length, Glow-Wire Capable, Natural |
| Application | Signal, Wire-to-Board |
| Component Type | PCB Header |
| Product Name | Mini-Lock |
| UPC | 822350758956 |

Agency

| | |
|----|--------|
| UL | E29179 |
|----|--------|

Electrical

| | |
|-------------------------------|------------------|
| Current - Maximum per Contact | 3.0A |
| Voltage - Maximum | 250V AC (RMS)/DC |

Physical

| | |
|--------------------|----|
| Breakaway | No |
| Circuits (Loaded) | 11 |
| Circuits (maximum) | 11 |

| | |
|--------------------------------|---------------------------|
| Color - Resin | Natural |
| Durability (mating cycles max) | 30 |
| Glow-Wire Capable | Yes |
| Keying to Mating Part | None |
| Lock to Mating Part | Yes |
| Material - Metal | Phosphor Bronze |
| Material - Plating Mating | Tin |
| Material - Plating Termination | Tin |
| Material - Resin | Polyamide |
| Net Weight | 1400.570/mg |
| Number of Rows | 1 |
| Orientation | Right Angle |
| Packaging Type | Tray |
| PC Tail Length | 3.40mm |
| PCB Locator | No |
| PCB Retention | Yes |
| PCB Thickness - Recommended | 1.60mm |
| Pitch - Mating Interface | 2.50mm |
| Polarized to Mating Part | Yes |
| Polarized to PCB | No |
| Shrouded | Fully |
| Stackable | No |
| Temperature Range - Operating | -55° to +105°C |
| Termination Interface Style | Through Hole - Kinked Pin |

Mates With / Use With

Mates with Part(s)

| Description | Part Number |
|---|--------------|
| Mini-Lock Single Row Receptacle Housings | <u>51163</u> |
| Mini-Lock-to-Mini-Lock Off-the-Shelf (OTS) Cable Assemblies | <u>15137</u> |

This document was generated on Dec 13, 2024