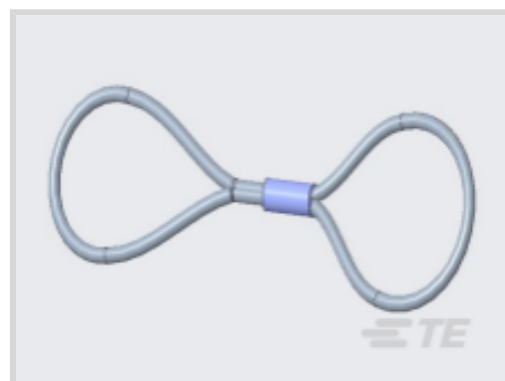




Connectors > Automotive Connectors > Automotive Connector Accessories > Other Automotive Connector Accessories



Automotive Connector Accessory Type: **Cap**

Primary Product Material: **Rubber**

Primary Product Color: **Black**

Operating Temperature Range: **-40 – 108 °C [-40 – 226 °F]**

EU RoHS Compliance: **Compliant**

Features

Product Type Features

Automotive Connector Accessory Type	Cap
-------------------------------------	-----

Body Features

Primary Product Material	Rubber
Primary Product Color	Black

Usage Conditions

Operating Temperature Range	-40 – 108 °C[-40 – 226 °F]
-----------------------------	----------------------------

Other

EU RoHS Compliance	Compliant
EU ELV Compliance	Compliant

Product Compliance

[For compliance documentation, visit the product page on TE.com>](#)

EU RoHS Directive 2011/65/EU	Compliant
EU ELV Directive 2000/53/EC	Compliant
China RoHS 2 Directive MIIT Order No 32, 2016	No Restricted Materials Above Threshold
EU REACH Regulation (EC) No. 1907/2006	Current ECHA Candidate List: JUNE 2024 (241) Candidate List Declared Against: JAN 2023 (233)

Does not contain REACH SVHC

Halogen Content

Low Halogen - Br, Cl, F, I < 900 ppm per homogenous material. Also BFR/CFR/PVC Free

Solder Process Capability

Not applicable for solder process capability

Product Compliance Disclaimer

This information is provided based on reasonable inquiry of our suppliers and represents our current actual knowledge based on the information they provided. This information is subject to change. The part numbers that TE has identified as EU RoHS compliant have a maximum concentration of 0.1% by weight in homogenous materials for lead, hexavalent chromium, mercury, PBB, PBDE, DBP, BBP, DEHP, DIBP, and 0.01% for cadmium, or qualify for an exemption to these limits as defined in the Annexes of Directive 2011/65/EU (RoHS2). Finished electrical and electronic equipment products will be CE marked as required by Directive 2011/65/EU. Components may not be CE marked. Additionally, the part numbers that TE has identified as EU ELV compliant have a maximum concentration of 0.1% by weight in homogenous materials for lead, hexavalent chromium, and mercury, and 0.01% for cadmium, or qualify for an exemption to these limits as defined in the Annexes of Directive 2000/53/EC (ELV). Regarding the REACH Regulation, the information TE provides on SVHC in articles for this part number is based on the latest European Chemicals Agency (ECHA) 'Guidance on requirements for substances in articles' posted at this URL: <https://echa.europa.eu/guidance-documents/guidance-on-reach>

Compatible Parts



TE Part # CAT-H3910-PC1748
DEUTSCH HD10 PLUG DUST CAPS



TE Part # CAT-H396-RC8382
Receptacle Protective Caps — DEUTSCH HDP20




TE Part # CAT-H3910-RC1748
Receptacle Dust Caps — DEUTSCH HD10


Also in the Series | DEUTSCH HDP




Automotive Connector Caps & Covers (4)



Automotive Housings(357)



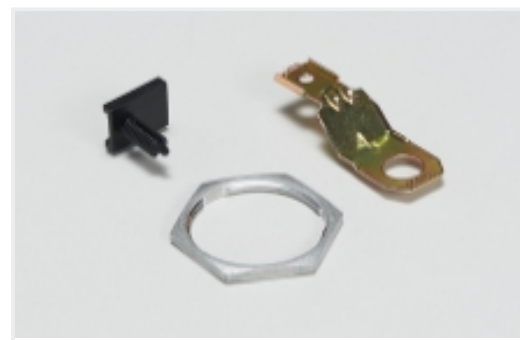
Connector Backshells(10)



Connector Seals & Cavity Plugs(1)



Insertion & Extraction Tools(11)



Other Automotive Connector Accessories(6)

Also in the Series | DEUTSCH HD



Automotive Connector Caps & Covers (32)



Automotive Housings(768)



Connector Backshells(29)



Connector Seals & Cavity Plugs(10)



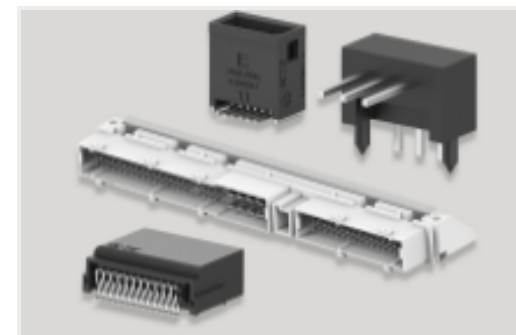
Connector Strain Relief(5)



Insertion & Extraction Tools(11)



Other Automotive Connector Accessories(12)



PCB Headers & Receptacles(1)

Customers Also Bought



TE Part #HDP26-24-23PE-L015
PLG, 23P, BLK, E, THD, 16, P



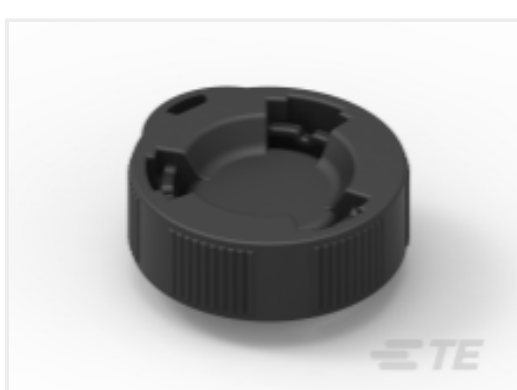
TE Part #HD14-9-96PE
DEUTSCH HD10 Housings



TE Part #1011-258-0205
BKSHL, 2P, BLK, REC,RA,SR,NW6/7.5 /8.5/10



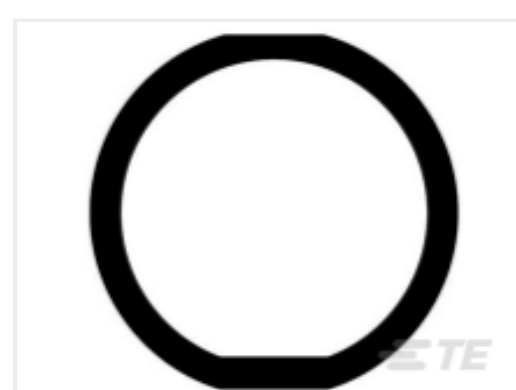
TE Part #HDC16-9
DUST CAP ASM



TE Part #HDC26-18
DUST CAP, 18SZ, REC, BLK, HDP



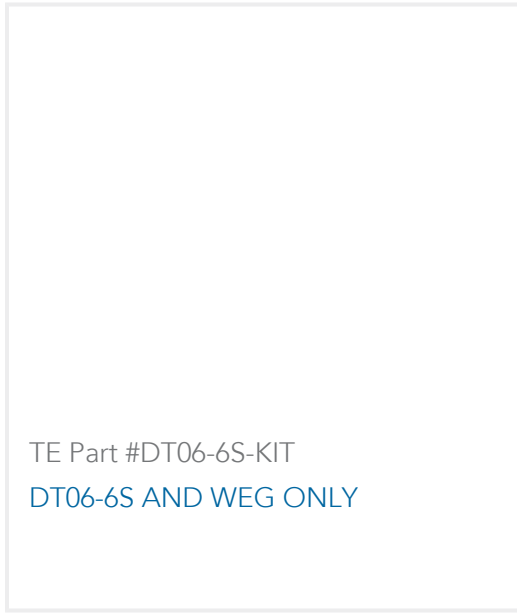
TE Part #DRC18-40SBE-P013
PLG, 40P, BLK, E, SEAL BOND, B



TE Part #16-04477
GASKET, 24SZ, BLK, HD30



TE Part #CAR2SC68
CAR RECPT DIN9680 2way, IP68



Documents

Product Drawings

RUBBER LANYARD

English

CAD Files

3D PDF

3D

Customer View Model

[ENG_CVM_CVM_JDL082397_99.2d_dxf.zip](#)

English

Customer View Model

[ENG_CVM_CVM_JDL082397_99.3d_igs.zip](#)

English

Customer View Model

[ENG_CVM_CVM_JDL082397_99.3d_stp.zip](#)

English

By downloading the CAD file I accept and agree to the [Terms and Conditions](#) of use.

Datasheets & Catalog Pages

DEUTSCH HD10 CONNECTOR SERIES

English

CONNECTOR SELECTOR

English

Product Specifications

Application Specification

English