

5-104505-2 ✓ ACTIVE

AMPMODU | AMPMODU MTE

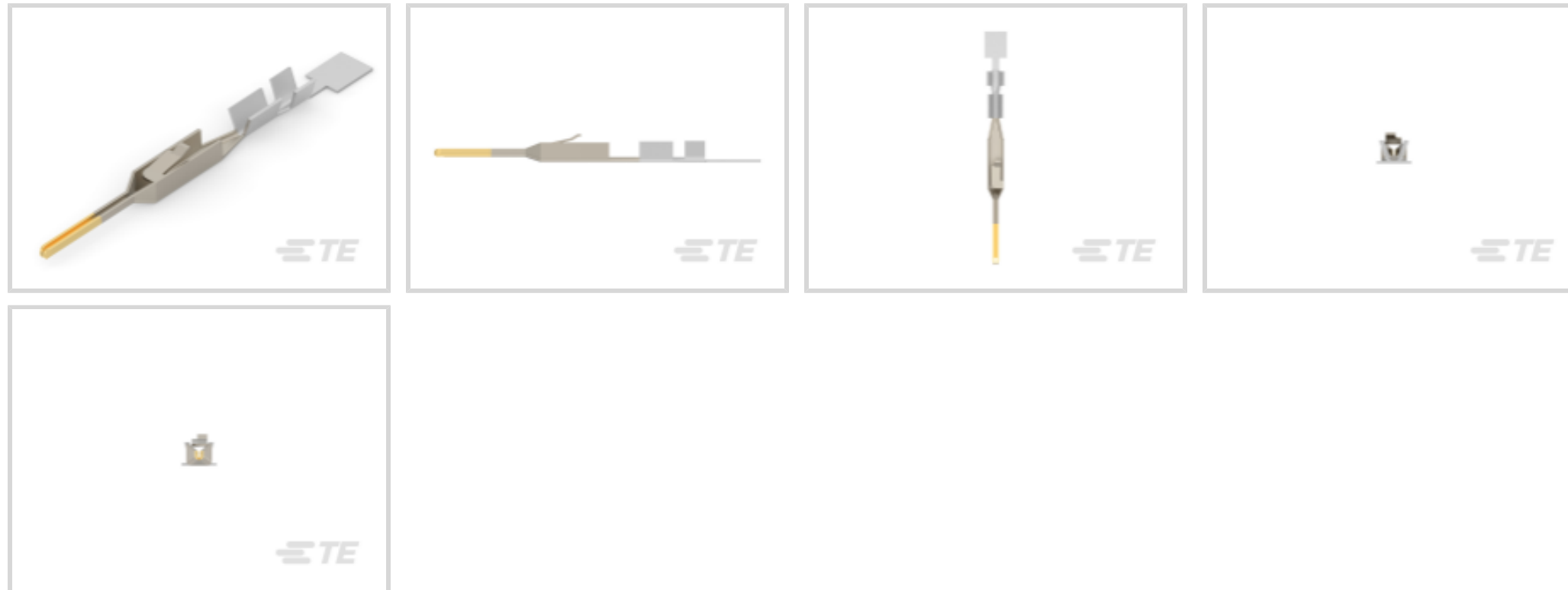
TE Internal #: 5-104505-2

Pin Contact, Tin, 300 VAC, Locking Lance Contact Retention,  
Discrete Wire, 26 – 22 AWG Wire Size, .12 – .4 mm<sup>2</sup> Wire Size,  
AMPMODU MTE

[View on TE.com >](#)



Connectors > Contacts > Connector Contacts



Contact Type: **Pin**

Contact Mating Area Plating Material: **Tin**

Wire Contact Termination Area Plating Material: **Tin**

Operating Voltage: **300 VAC**

Contact Retention Within Housing: **With**

## Features

### Industry Standards

|   |                       |
|---|-----------------------|
| Compatible With Approved Standards Products | UL E28476, CSA LR7189 |
|---|-----------------------|

### Product Type Features

|                    |                   |
|--------------------|-------------------|
| Discrete Wire Type | Solid or Stranded |
|--------------------|-------------------|

|                  |          |
|------------------|----------|
| Applied Pressure | Standard |
|------------------|----------|

### Packaging Features

|                    |       |
|--------------------|-------|
| Packaging Quantity | 12500 |
|--------------------|-------|

|                  |            |
|------------------|------------|
| Packaging Method | Reel & Box |
|------------------|------------|

### Dimensions

|                                      |                                |
|--------------------------------------|--------------------------------|
| Compatible Insulation Diameter Range | .91 – 1.37 mm [.035 – .054 in] |
|--------------------------------------|--------------------------------|

|           |               |
|-----------|---------------|
| Wire Size | 254 – 642 CMA |
|-----------|---------------|

### Mechanical Attachment

|                         |      |
|-------------------------|------|
| Wire Insulation Support | With |
|-------------------------|------|

|                                       |               |
|---------------------------------------|---------------|
| Contact Retention Type Within Housing | Locking Lance |
|---------------------------------------|---------------|

### Electrical Characteristics

|                                       |         |
|---------------------------------------|---------|
| Termination Resistance                | 12 mΩ   |
| Insulation Resistance                 | 5000 MΩ |
| Dielectric Withstanding Voltage (Max) | 750 V   |
| Operating Voltage                     | 300 VAC |

### Contact Features

|   |                               |
|---|-------------------------------|
| Contact Underplating Material                         | Nickel                        |
| Contact Orientation                                   | Straight                      |
| Contact Underplating Material Thickness               | .76 μm[30 μin]                |
| Contact Mating Area Plating Material Thickness        | 2.54 – 5.08 μm[100 – 200 μin] |
| Wire Contact Termination Area Plating Material Finish | Matte                         |
| Mating Square Post Dimension                          | .64 mm[.025 in]               |
| Contact Length  | 20.47 mm[.806 in]             |
| Wire Contact Termination Area Plating Thickness       | 2.54 – 5.08 μm[100 – 200 μin] |
| Barrel Type   | Open                          |
| Contact Type  | Pin                           |
| Contact Mating Area Plating Material                  | Tin                           |
| Wire Contact Termination Area Plating Material        | Tin                           |
| Contact Retention Within Housing                      | With                          |
| Contact Base Material                                 | Phosphor Bronze               |
| Contact Current Rating (Max)                          | 3 A                           |

### Configuration Features

|                                   |               |
|-----------------------------------|---------------|
| Compatible With Wire & Cable Type | Discrete Wire |
|-----------------------------------|---------------|

### Termination Features

|                                    |              |
|------------------------------------|--------------|
| Termination Method to Wire & Cable | Crimp        |
| Product Terminates To              | Wire & Cable |

### Usage Conditions

|                             |                            |
|-----------------------------|----------------------------|
| Operating Temperature Range | -65 – 105 °C[-85 – 221 °F] |
|-----------------------------|----------------------------|

### Operation/Application

|                     |        |
|---------------------|--------|
| Circuit Application | Signal |
|---------------------|--------|

### Other

|                    |           |
|--------------------|-----------|
| EU RoHS Compliance | Compliant |
|--------------------|-----------|



EU ELV Compliance

Compliant

### Product Compliance

[For compliance documentation, visit the product page on TE.com>](#)

|   |   |
|---|---|
| EU RoHS Directive 2011/65/EU                  | Compliant   |
| EU ELV Directive 2000/53/EC                   | Compliant   |
| China RoHS 2 Directive MIIT Order No 32, 2016 | No Restricted Materials Above Threshold   |
| EU REACH Regulation (EC) No. 1907/2006        | Current ECHA Candidate List: JUNE 2024 (241)<br>Candidate List Declared Against: JUNE 2024 (241)<br>Does not contain REACH SVHC |
| Halogen Content                               | Low Halogen - Br, Cl, F, I < 900 ppm per homogenous material. Also BFR/CFR/PVC Free   |
| Solder Process Capability                     | Not applicable for solder process capability  |

#### Product Compliance Disclaimer

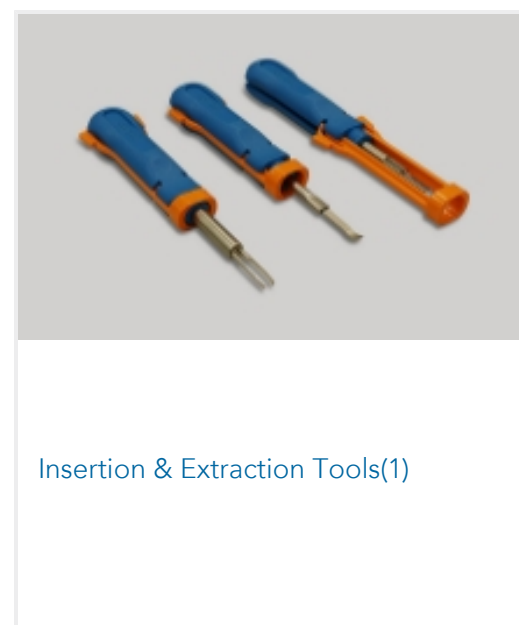
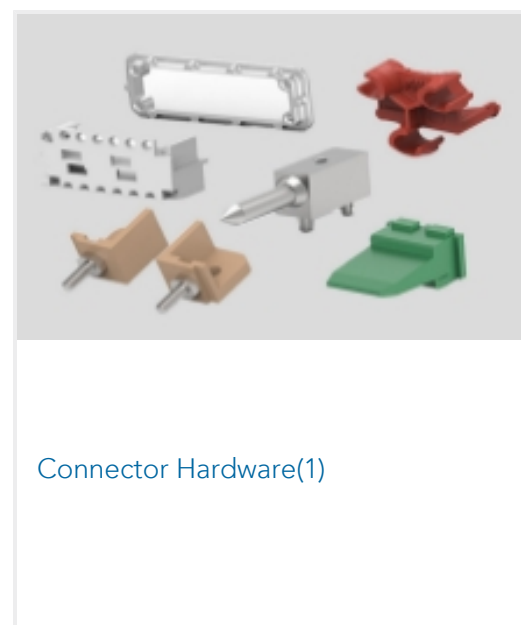
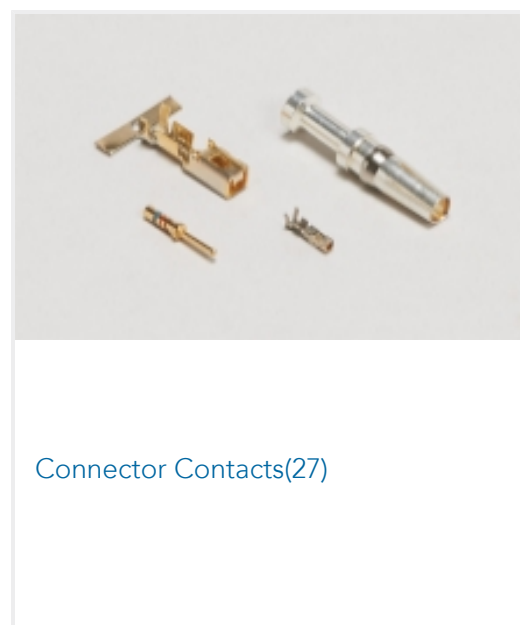
This information is provided based on reasonable inquiry of our suppliers and represents our current actual knowledge based on the information they provided. This information is subject to change. The part numbers that TE has identified as EU RoHS compliant have a maximum concentration of 0.1% by weight in homogenous materials for lead, hexavalent chromium, mercury, PBB, PBDE, DBP, BBP, DEHP, DIBP, and 0.01% for cadmium, or qualify for an exemption to these limits as defined in the Annexes of Directive 2011/65/EU (RoHS2). Finished electrical and electronic equipment products will be CE marked as required by Directive 2011/65/EU. Components may not be CE marked. Additionally, the part numbers that TE has identified as EU ELV compliant have a maximum concentration of 0.1% by weight in homogenous materials for lead, hexavalent chromium, and mercury, and 0.01% for cadmium, or qualify for an exemption to these limits as defined in the Annexes of Directive 2000/53/EC (ELV). Regarding the REACH Regulation, the information TE provides on SVHC in articles for this part number is based on the latest European Chemicals Agency (ECHA) 'Guidance on requirements for substances in articles' posted at this URL: <https://echa.europa.eu/guidance-documents/guidance-on-reach>

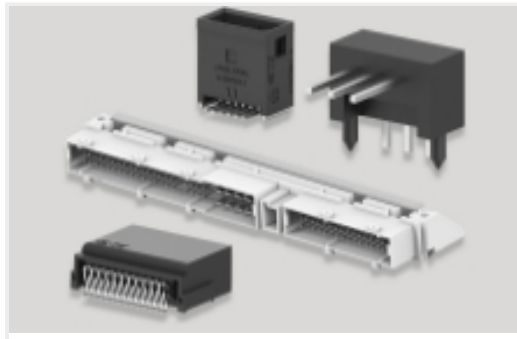
### Compatible Parts



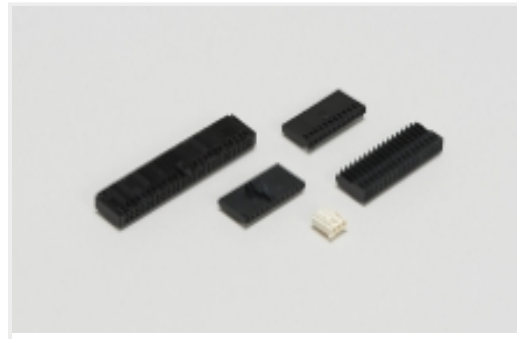


Also in the Series | **AMPMODU MTE**





PCB Headers & Receptacles(444)



Wire-to-Board Connector Assemblies & Housings(298)

## Customers Also Bought



TE Part #6-1579007-1  
EXTRACTION TOOL



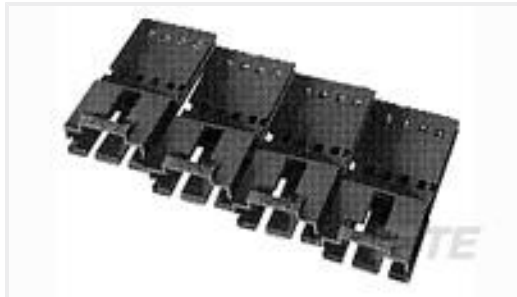
TE Part #103653-5  
06 MTE SHRD PIN HSG SR LATCH



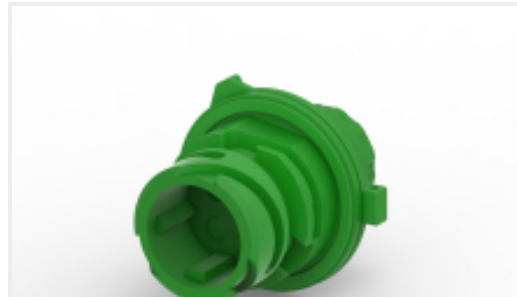
TE Part #926299-3  
5P UN-MNL STECKGEH



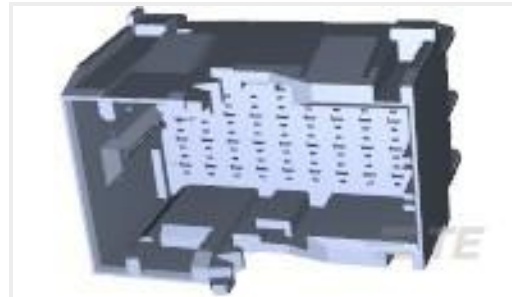
TE Part #3-640599-2  
02P MTA156 CONN ASSY 18AWG ORA



TE Part #1-103653-1  
12 MTE SHRD PIN HSG SR LATCH



TE Part #3-967402-1  
2.5MM PIN HOUSING, 2-4POS.,ASS



TE Part #1-1718492-2  
1.5MM TAB HSG 36 POS ASSY



TE Part #YDIV46E17-06SNC128  
PLUG ASSY



TE Part #1544966-1  
8MM NG1+ TERMINAL



TE Part #160826-3  
PL REC 22-18 AWG .0160 X 2.060 TPBR

## Documents

### Product Drawings

[MTE PIN 22-26 AWG PLTD](#)

English

### CAD Files

Customer View Model

[ENG\\_CVM\\_CVM\\_5-104505-2\\_V.2d\\_dxf.zip](#)

English

[3D PDF](#)



3D

Customer View Model

[ENG\\_CVM\\_CVM\\_5-104505-2\\_V.3d\\_igs.zip](#)

English

Customer View Model

[ENG\\_CVM\\_CVM\\_5-104505-2\\_V.3d\\_stp.zip](#)

English

By downloading the CAD file I accept and agree to the [Terms and Conditions](#) of use.

---

### Datasheets & Catalog Pages

[AMPMODU\\_INTERCONNECTION\\_SYSTEM\\_SECTION5\\_CONT](#)

English

[AMPMODU MTE INTERCONNECT SYSTEM](#)

English

---

### Product Specifications

[Application Specification](#)

English