



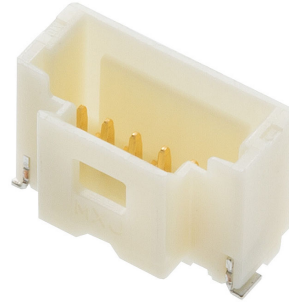
Part Number : [5044490607](#)

Product Description : 1.00mm Pitch, Pico-Clasp PCB Header, Single Row, Vertical, Surface Mount, 0.10µm Gold Plated, Inner Positive Lock, 6 Circuits, Natural

Series Number : 504449

Status : Active

Product Category : PCB Headers and Receptacles



Documents & Resources

Drawings

[5044490607_sd.pdf](#)

3D Models and Design Files

[5044490607.dxf](#)

[5044490607.pdf](#)

[5044490607_stp.zip](#)

Specifications

[5013300000-AS-000.pdf](#)

[SPK-504449-001-001.pdf](#)

[5013300000-PS-002.pdf](#)

[5013301000-PS-002.pdf](#)

[5013301000-PS-CHI-002.pdf](#)

[5013301000-PS-JAP-002.pdf](#)

Product Environment Compliance

Compliance

GADSL/IMDS	Compliant with Exemption 44; 33
China RoHS	
EU ELV	Not Relevant
Low-Halogen Status	Not Low-Halogen per IEC 61249-2-21
REACH SVHC	Not Contained per D(2024)6225-DC (07 Nov 2024)
EU RoHS	Compliant per EU 2015/863

Multiple Part Product Compliance Statements

- Eu RoHS
- REACH SVHC
- Low-Halogen

Multiple Part Industry Compliance Documents

- IPC 1752A Class C
- IPC 1752A Class D
- Molex Product Compliance Declaration
- IEC-62474
- chemSHERPA (xml)

EU RoHS Certificate of Compliance

Part Details

General

Status	Active
Category	PCB Headers and Receptacles
Series	504449
Description	1.00mm Pitch, Pico-Clasp PCB Header, Single Row, Vertical, Surface Mount, 0.10µm Gold Plated, Inner Positive Lock, 6 Circuits, Natural
Application	Signal, Wire-to-Board
Component Type	PCB Header
Product Name	Pico-Clasp
UPC	887191268170

Electrical

Current - Maximum per Contact	1.0A
Voltage - Maximum	100V AC (RMS)/DC

Physical

Breakaway	No
Circuits (Loaded)	6
Circuits (maximum)	6
Color - Resin	Natural
Durability (mating cycles max)	30

First Mate / Last Break	No
Glow-Wire Capable	No
Guide to Mating Part	No
Keying to Mating Part	None
Lock to Mating Part	Yes
Material - Metal	Phosphor Bronze
Material - Plating Mating	Gold
Material - Plating Termination	Gold
Material - Resin	Polyamide
Net Weight	147.800/mg
Number of Rows	1
Orientation	Vertical
Packaging Type	Embossed Tape on Reel
PCB Locator	No
PCB Retention	Yes
Pitch - Mating Interface	1.00mm
Plating min - Mating	0.102µm
Plating min - Termination	0.102µm
Polarized to Mating Part	Yes
Polarized to PCB	No
Robotic Placement	Vacuum Pick-Up Tape
Shrouded	Fully
Stackable	No
Temperature Range - Operating	-40° to +85°C
Termination Interface Style	Surface Mount

Mates With / Use With

Mates with Part(s)

Description	Part Number
Pico-Clasp Low-Halogen Single Row Receptacle Housings	<u>501330</u>