



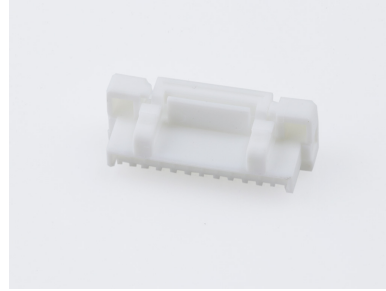
Part Number : [5023801200](#)

Product Description : CLIK-Mate Plug Housing, 1.25mm Pitch, Single Row, Positive Lock, 12 Circuits, White

Series Number : 502380

Status : Active

Product Category : Connector Housings



Documents & Resources

Drawings

[5023801200_sd.pdf](#)

[SPK-502380-001-001.pdf](#)

[SPK-502380-001-002.pdf](#)

3D Models and Design Files

[5023801200_stp.zip](#)

Specifications

[AS-502380-001-001.pdf](#)

[AS-502380-002-001.pdf](#)

[PS-502382-001-001.pdf](#)

[PS-502382-002-001.pdf](#)

Product Environment Compliance

Compliance

GADSL/IMDS	Not Relevant
China RoHS	
EU ELV	Not Relevant
Low-Halogen Status	Not Low-Halogen per IEC 61249-2-21
REACH SVHC	Not Contained per D(2024)6225-DC (07 Nov 2024)
EU RoHS	Compliant per EU 2015/863

Multiple Part Product Compliance Statements

- Eu RoHS
- REACH SVHC
- Low-Halogen

Multiple Part Industry Compliance Documents

- IPC 1752A Class C
- IPC 1752A Class D
- Molex Product Compliance Declaration
- IEC-62474
- chemSHERPA (xml)

EU RoHS Certificate of Compliance

Part Details

General

Status	Active
Category	Connector Housings
Series	502380
Description	CLIK-Mate Plug Housing, 1.25mm Pitch, Single Row, Positive Lock, 12 Circuits, White
Application	Signal, Wire-to-Board
Product Name	CLIK-Mate
UPC	822350895149

Physical

Breakaway	No
Circuits (maximum)	12
Color - Resin	White
Gender	Plug
Glow-Wire Capable	No
Keying to Mating Part	Yes
Lock to Mating Part	Yes
Material - Resin	Polyester
Net Weight	297.000/mg
Number of Rows	1
Packaging Type	Bag
Panel Mount	No
Pitch - Mating Interface	1.25mm
Polarized to Mating Part	Yes
Stackable	No

Temperature Range - Operating	-40° to +105°C
-------------------------------	----------------

Use with Part(s)

Description	Part Number
Pre-Crimped Lead CLIK-Mate 1.25mm Male-to-CLIK-Mate 1.25mm Male, Tin (Sn) Plating, 150.00mm Length, 28 AWG, Black	<u>797581012</u>
Pre-Crimped Lead CLIK-Mate 1.25mm Male-to-CLIK-Mate 1.25mm Male, Tin (Sn) Plating, 300.00mm Length, 28 AWG, Black	<u>797581013</u>
