



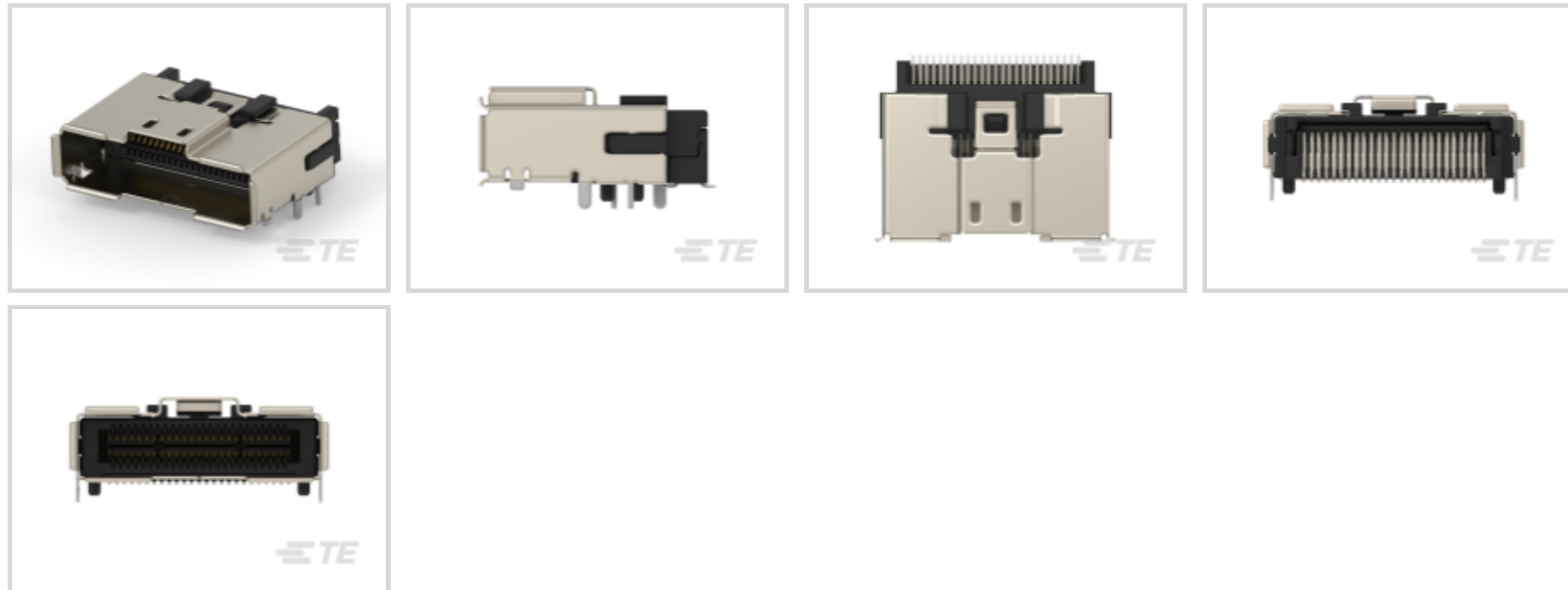
Sliver for SFF-TA-1002

TE Internal #: 2292055-1

TE Sliver, Cable Plug Assembly, Right Angle, Cable-to-Board, 50 Position, Surface Mount, Sliver for SFF-TA-1002, Internal I/O Connectors

[View on TE.com >](#)

Connectors > PCB Connectors > Internal I/O Connectors



Internal I/O Connector Type: **TE Sliver**

Connector Mates With: **Cable Plug Assembly**

PCB Mount Orientation: **Right Angle**

Connector System: **Cable-to-Board**

Number of Positions: **50**

Features

Product Type Features

Internal I/O Connector Type	TE Sliver
Connector Mates With	Cable Plug Assembly
Connector System	Cable-to-Board
Connector & Contact Terminates To	Printed Circuit Board

Configuration Features

PCB Mount Orientation	Right Angle
Number of Positions	50
Number of Rows	2

Termination Features

Termination Method to PCB	Surface Mount
---------------------------	---------------

Housing Features

Centerline (Pitch)	.6 mm[.023 in]
--------------------	----------------

Contact Features

--	--



Contact Current Rating (Max)	.9 A
Contact Mating Area Plating Material Thickness	.762 μm[30 μin]
PCB Contact Termination Area Plating Material	Tin
Contact Underplating Material	Nickel
Contact Mating Area Plating Material	Gold
Contact Base Material	Copper Alloy

Operation/Application

Circuit Application	Signal
---------------------	--------

Other

EU RoHS Compliance	Compliant
EU ELV Compliance	Compliant

Mechanical Attachment

Connector Mounting Type	Board Mount
-------------------------	-------------

Usage Conditions

Operating Temperature Range	-55 – 85 °C[-67 – 185 °F]
-----------------------------	---------------------------

Product Compliance

[For compliance documentation, visit the product page on TE.com>](#)

EU RoHS Directive 2011/65/EU	Compliant
EU ELV Directive 2000/53/EC	Compliant
China RoHS 2 Directive MIIT Order No 32, 2016	No Restricted Materials Above Threshold
EU REACH Regulation (EC) No. 1907/2006	Current ECHA Candidate List: JUNE 2024 (241) Candidate List Declared Against: JUNE 2024 (241) Does not contain REACH SVHC
Halogen Content	Low Halogen - Br, Cl, F, I < 900 ppm per homogenous material. Also BFR/CFR/PVC Free
Solder Process Capability	Reflow solder capable to 260°C

Product Compliance Disclaimer

This information is provided based on reasonable inquiry of our suppliers and represents our current actual knowledge based on the information they provided. This information is subject to change. The part numbers that TE has identified as EU RoHS compliant have a maximum concentration of 0.1% by weight in homogenous materials for lead, hexavalent chromium, mercury, PBB, PBDE, DBP, BBP, DEHP, DIBP, and 0.01% for cadmium, or qualify for an exemption to these limits as defined in the Annexes of Directive 2011/65/EU (RoHS2). Finished electrical and electronic equipment products will be CE marked as required by Directive 2011/65/EU. Components may not be CE marked. Additionally, the part

numbers that TE has identified as EU ELV compliant have a maximum concentration of 0.1% by weight in homogenous materials for lead, hexavalent chromium, and mercury, and 0.01% for cadmium, or qualify for an exemption to these limits as defined in the Annexes of Directive 2000/53/EC (ELV). Regarding the REACH Regulation, the information TE provides on SVHC in articles for this part number is based on the latest European Chemicals Agency (ECHA) 'Guidance on requirements for substances in articles' posted at this URL: <https://echa.europa.eu/guidance-documents/guidance-on-reach>

Compatible Parts



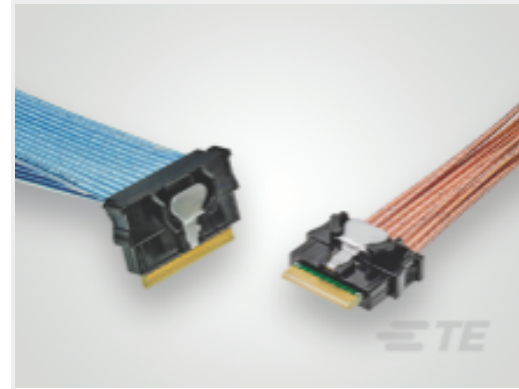
TE Part # 2821750-2
SLIVER C/A, 50P, STR TO STR,25GHZ, 100OHM



TE Part # 2317815-1
CABLE PLUG KIT, SLIVER 50P,



TE Part # 2821747-2
SLIVER C/A, 50P, STR TO STR,10GHZ, 100OHM



TE Part # 2821747-1
SLIVER C/A, 50P, STR TO STR,10GHZ, 100OHM



TE Part # 2821750-1
SLIVER C/A, 50P, STR TO STR 25GHZ 100OHM



TE Part # 2820399-1
SLIVER C/A, 50P, R/A TO R/A, 10GHZ, 85OHM



TE Part # 2820399-2
SLIVER C/A, 50P, R/A TO R/A, 10GHZ, 85OHM



TE Part # 2821638-1
SLIVER C/A, 50P, STR TO R/A, 10GHZ, 85OHM



TE Part # 2821638-2
SLIVER C/A, 50P, STR TO R/A, 10GHZ, 85OHM



TE Part # 2821742-1
SLIVER C/A, 50P, STR TO STR, 25G, 85OHM



TE Part # 2821742-2
SLIVER C/A, 50P, STR TO STR, 25G, 85OHM



TE Part # 2821743-1
SLIVER C/A, 50P, R/A TO R/A, 25GHZ 85OHM



TE Part # 2821743-2
SLIVER C/A, 50P, R/A TO R/A, 25GHZ 85OHM



TE Part # 2821748-1
SLIVER C/A, 50P, R/A TO R/A,10GHZ, 100OHM



TE Part # 2821748-2
SLIVER C/A, 50P, R/A TO R/A,10GHZ, 100OHM



TE Part # 2821749-1
SLIVER C/A, 50P, STR TO R/A,10GHZ, 100OHM



TE Part # 2821749-2
SLIVER C/A, 50P, STR TO R/A,10GHZ, 100OHM



TE Part # 2821751-1
SLIVER C/A, 50P, R/A TO R/A,25GHZ, 100OHM

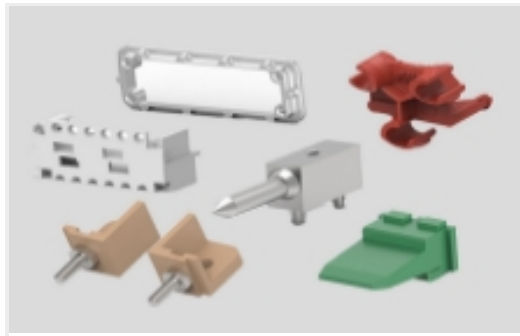


TE Part # 2821751-2
SLIVER C/A, 50P, R/A TO R/A,25GHZ, 100OHM

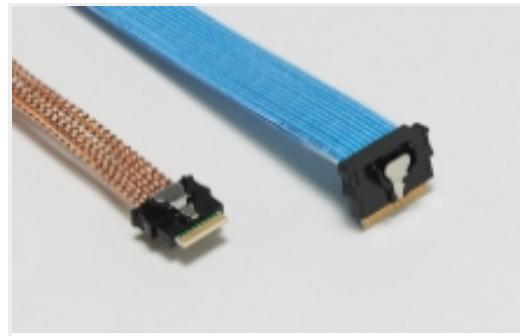


TE Part # 2821752-1
SLIVER C/A, 50P, STR TO R/A,25GHZ, 100OHM

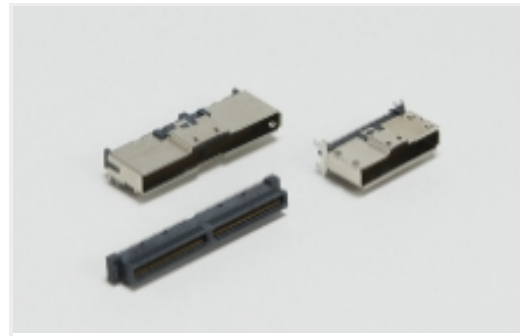
Also in the Series | Sliver for SFF-TA-1002



Connector Hardware(1)



Internal I/O Cable Assemblies(105)

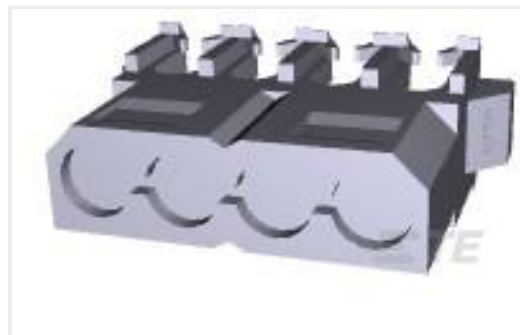


Internal I/O Connectors(133)

Customers Also Bought



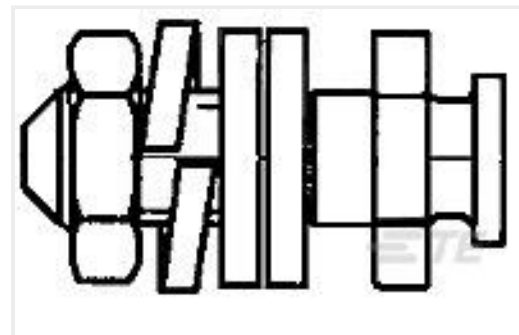
TE Part #1-480425-0
04P CMNL PLUG HSG P/M NATL



TE Part #770156-3
4P CMNL IDC PLUG 18AWG ORG V2



TE Part #9-1415006-1
RTH34012



TE Part #5206514-6
SLIDING LOCK POST KIT



TE Part #2305987-1
2-PORT MATENET HDR ASSY 90DEG, COD A



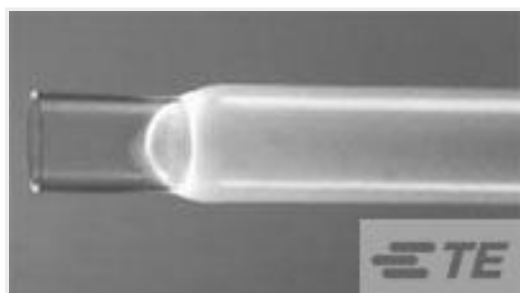
TE Part #6-2301994-1
RJ45 JACK INT.MAG. 1GB LED 1X1 INV (LOW)



TE Part #ADP-SMAF-BNCM
SMA Jack to BNC Plug



TE Part #5070122014
RNF-100-2-X-STK



TE Part #5960072006
TFER-3/4-X-STK



TE Part #1747025-6
ON TAPING(EMBOSS) 0.5MM PITCH



Documents

Product Drawings

[RECEPTACLE ASSY RA 50 POSN MBC](#)

English

CAD Files

[3D PDF](#)

3D

Customer View Model

[ENG_CVM_CVM_2292055-1_C.2d_dxf.zip](#)

English

Customer View Model

[ENG_CVM_CVM_2292055-1_C.3d_igs.zip](#)

English

Customer View Model

[ENG_CVM_CVM_2292055-1_C.3d_stp.zip](#)

English

By downloading the CAD file I accept and agree to the [Terms and Conditions](#) of use.

Datasheets & Catalog Pages

[Sliver Internal Cabled Interconnect Solutions Brochure \(Chinese\)](#)

Product Specifications

[Application Specification](#)

English

Agency Approvals

[UL Report](#)

English