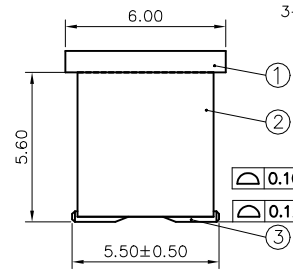


DIM.A	2-60 PINS	±0.20
	62-100 PINS	±0.30



NOTES: UNLESS OTHERWISE SPECIFIED

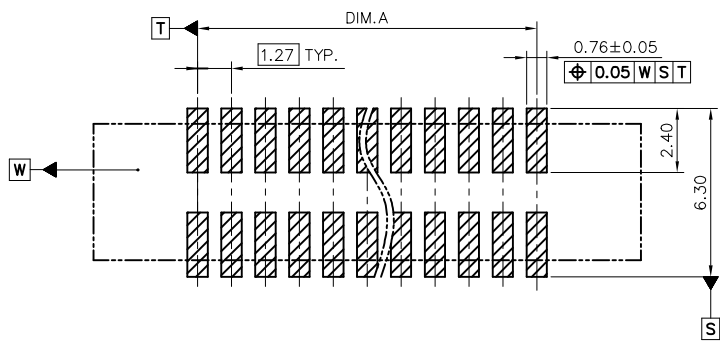
- ALL DIMENSIONS ARE IN MILLIMETER, PER ASME Y14.5M-2009.
- ELECTRICAL CHARACTERISTICS:
  - 2-1 VOLTAGE RATING: 125 VAC MAX..
  - 2-2 CURRENT RATING: 1.0 A MAX. PER PIN, 30°C RISE ABOVE AMBIENT.
  - 2-3 CONTACT RESISTANCE: 20 MILLIOHMS MAX. FOR INITIAL, 40 MILLIOHMS MAX. AFTER TEST.
  - 2-4 DIELECTRIC WITHSTANDING VOLTAGE: 500 VAC R.M.S..
  - 2-5 INSULATION RESISTANCE: 1000 MEGOHMS MIN..
- OTHER CHARACTERISTICS:
  - 3-1 THE PRODUCT WILL WITHSTAND EXPOSURE TO 260°C PEAK TEMPERATURE FOR 10 SECONDS IN A CONVECTION, INFRA-RED OR VAPOR PHASE REFLOW OVEN.
  - 3-2 PRODUCT SPEC: GS-12-629.
  - 3-3 PACKAGE SPEC: GS-14-1420.
  - 3-4 MATE WITH: 20021444.

20021521 - 0 0 X XX X X LF

- LEAD FREE
- PLATING:
  - 1: GOLD FLASH ALL OVER
  - 3: 0.25GXT AT CONTACT
  - 4: 0.25µm GOLD AT CONTACT
  - 8: 0.76µm GOLD AT CONTACT
  - 9: 0.76GXT AT CONTACT
- PACKING:
  - T: TUBE
  - D: TUBE+CAP
  - C: TAPE&REEL+CAP (P: 12mm)
  - E: TAPE&REEL+CAP (P: 16mm)
  - Q: TAPE&REEL W/O CAP (P: 12mm)

CONFIG  
0: WITH C ANGLE CAP  
1: WITH C ANGLE CAP

PIN COUNT  
SEE TABLE 1



RECOMMENDED P.C.B. LAYOUT  
LAYOUT TOLERANCE: ±0.05mm

3	CONTACT	COPPER ALLOY	1µm MIN. NICKEL PLATING OVERALL UNDERPLATED GOLD FLASH OVER 1µm MIN. NICKEL OVER ALL GOLD OR GXT PLATING ON CONTACT AREA
2	HOUSING	THERMOPLASTIC UL 94V-0	MOLDED BLACK
1	CAP	THERMOPLASTIC UL 94V-0	MOLDED BLACK

ITEM	DESCRIPTION	MATERIAL	TREATMENT
mat'l. code		surface ISO 1302 ✓	tolerance ISO 406 ISO 1101
ltr ecn no dr date		tolerances unless otherwise specified	projection mm
R	ELX-N-291051 GRACE LIU 04/23/26	angles linear	product family HPL 585
K	ELX-N-17601 TIM YAO 04/30/14	0°±2'	title MINITEK 1.27
L	ELX-N-19182 TIM YAO 10/24/14	dr	scale 5:1
M	ELX-N-28314 TONY LENG 10/31/17	enr GRACE LIU 04/23/26	Amphenol FCI
N	ELX-N-28945 TONY LENG 03/13/18	chr LQ LEI 04/23/26	sheet 1 of 2 size A3
P	ELX-N-55964 MIKE ZHOU 06/03/25	appd TIM YAO 04/23/26	20021521 type Product Customer Drawing
sheet index	revision R		
	sheet 1		

Amphenol FCI

© 2016 AFCI



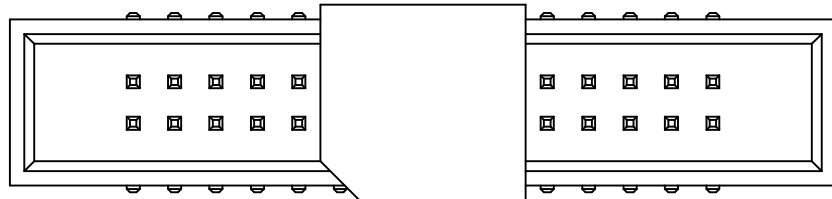
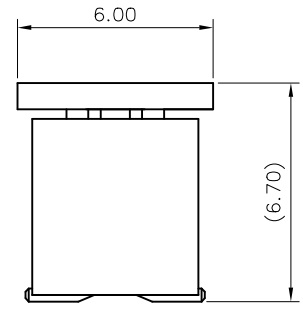
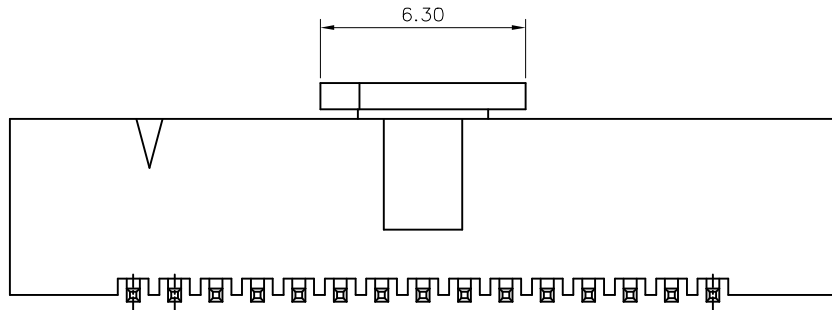


TABLE 1: DIM INFORMATION

DASH NO.	DIM.	AMOUNT OF PINS	DIM.A	DIM.B
-000 06 XX LF		06	2.54	10.11
-000 08 XX LF		08	3.81	11.38
-000 10 XX LF		10	5.08	12.65
-000 12 XX LF		12	6.35	13.92
-000 14 XX LF		14	7.62	15.19
-000 16 XX LF		16	8.89	16.46
-000 20 XX LF		20	11.43	19.00
-000 22 XX LF		22	12.70	20.27
-00X 24 XX LF		24	13.97	21.54
-000 26 XX LF		26	15.24	22.81

DASH NO.	DIM.	AMOUNT OF PINS	DIM.A	DIM.B
-000 30 XX LF		30	17.78	25.35
-000 34 XX LF		34	20.32	27.89
-000 40 XX LF		40	24.13	31.70
-000 44 XX LF		44	26.67	34.24
-000 50 XX LF		50	30.48	38.05
-000 60 XX LF		60	36.83	44.40
-000 64 XX LF		64	39.37	46.94
-000 68 XX LF		68	41.91	49.48
-000 80 XX LF		80	49.53	57.10
-000 A0 XX LF		100	62.23	69.80



CONFIG 1: 20021521-001XXXXLF  
WITH EDGE CUT CAP, OTHER DIMENSIONS SEE SHEET 1

mat'l. code		surface	tolerance	projection	product family
		ISO 1302 ✓	ISO 406 ISO 1101		HPL 585
ltr	ecn no	dr	date	tolerances unless otherwise specified	title
R				angles linear	MINITEK 1.27
				0°±2'	scale 5:1
				dr GRACE LIU 04/23/26	Amphenol FCI
				enr GRACE LIU 04/23/26	dwg no sheet 2 of 2 size
				chr LQ LEI 04/23/26	20021521 A3
				appd TIM YAO 04/23/26	type Product Customer Drawing
sheet index	revision sheet	R	2		