

934445211 ☑ SUPERSEDED

DEUTSCH | DEUTSCH DT-XT

TE Internal #: 2600038-7

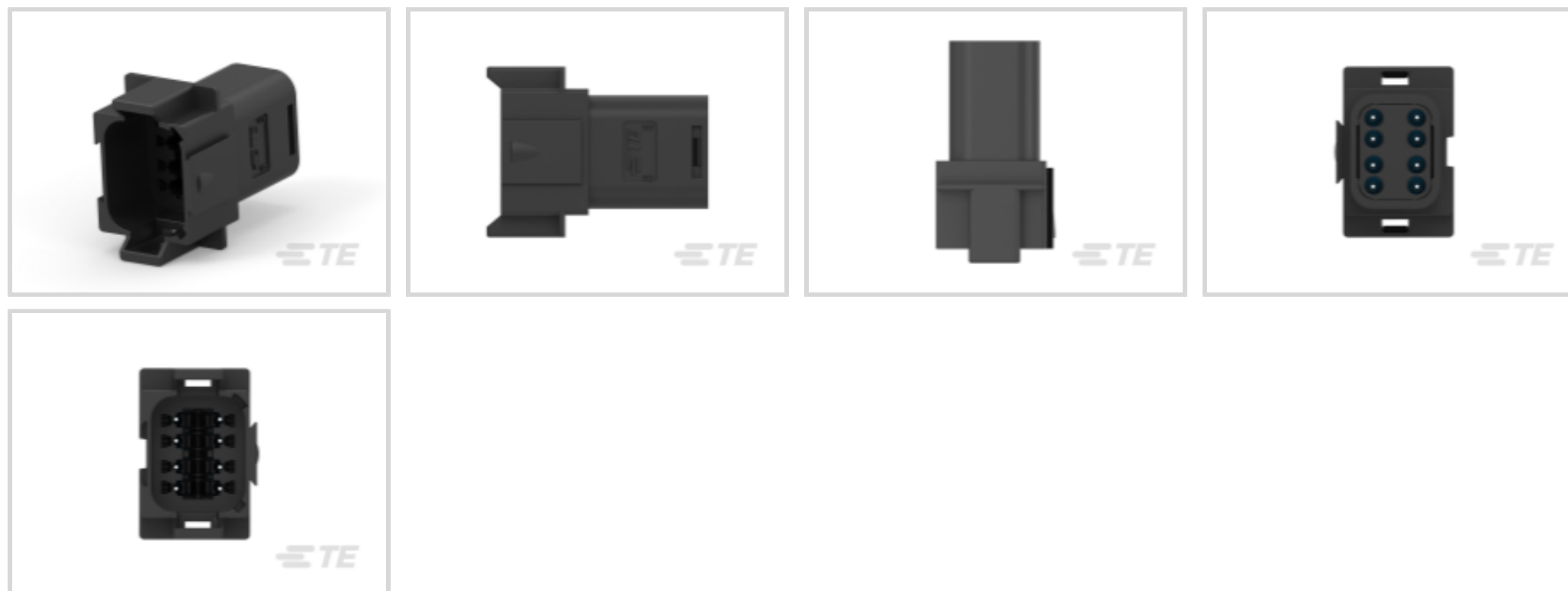
TE Internal Description: 8CCT RECEP BLACK K A W/LARGE SEAL

DT-XT 8-way Receptacle Connectors

[View on TE.com >](#)



Connectors > Automotive Connectors > Automotive Housings > DT-XT 8-way Receptacle Connectors



Connector System: **Wire-to-Wire**

Number of Positions: **8**

Connector & Housing Type: **Receptacle**

Centerline (Pitch): **5.45 mm [.21 in]**

Sealable: **Yes**

[All DT-XT 8-way Receptacle Connectors \(0\)](#)

Features

Product Type Features

| | |
|-----------------------------------|-----------------------|
| Connector System | Wire-to-Wire |
| Connector & Housing Type | Receptacle |
| Sealable | Yes |
| Connector & Contact Terminates To | Wire & Cable |
| Primary Locking Feature | Integrated in Housing |
| Mixed & Hybrid Connector | No |
| Connector Shape | Rectangular |

Configuration Features

| | |
|---------------------|---|
| Number of Positions | 8 |
| Number of Rows | 2 |

Housing Features

| | |
|--------------------|-----------------|
| Centerline (Pitch) | 5.45 mm[.21 in] |
|--------------------|-----------------|

Contact Features



| | |
|---------------------|------------------|
| Mating Pin Diameter | 1.56 mm[.061 in] |
|---------------------|------------------|

| | |
|--------------|---------|
| Contact Size | Size 16 |
|--------------|---------|

Body Features

| | |
|-----------------------|-------|
| Primary Product Color | Black |
|-----------------------|-------|

| | |
|-------------------------|---|
| Connector & Keying Code | A |
|-------------------------|---|

Mechanical Attachment

| | |
|-------------------------|----------------------------|
| Connector Mounting Type | Cable Mount (Free-Hanging) |
|-------------------------|----------------------------|

| | |
|-----------------------|-------|
| Mating Alignment Type | Keyed |
|-----------------------|-------|

| | |
|------------------|------|
| Mating Alignment | With |
|------------------|------|

Usage Conditions

| | |
|-----------------------------|----------------|
| Operating Temperature (Max) | 125 °C[257 °F] |
|-----------------------------|----------------|

Other

| | |
|--------------------------------------|----|
| Connector Position Assurance Capable | No |
|--------------------------------------|----|

| | |
|--------------------|-----------|
| EU RoHS Compliance | Compliant |
|--------------------|-----------|

| | |
|-------------------|-----------|
| EU ELV Compliance | Compliant |
|-------------------|-----------|

Product Compliance

[For compliance documentation, visit the product page on TE.com>](#)

| | |
|------------------------------|-----------|
| EU RoHS Directive 2011/65/EU | Compliant |
|------------------------------|-----------|

| | |
|-----------------------------|-----------|
| EU ELV Directive 2000/53/EC | Compliant |
|-----------------------------|-----------|

| | |
|---|---|
| China RoHS 2 Directive MIIT Order No 32, 2016 | No Restricted Materials Above Threshold |
|---|---|

| | |
|--|--|
| EU REACH Regulation (EC) No. 1907/2006 | Current ECHA Candidate List: JUNE 2024 (241) Candidate List Declared Against: JAN 2023 (233) Does not contain REACH SVHC |
|--|--|

| | |
|-----------------|---|
| Halogen Content | Low Halogen - Br, Cl, F, I < 900 ppm per homogenous material. Also BFR/CFR/PVC Free |
|-----------------|---|

| | |
|---------------------------|--|
| Solder Process Capability | Not reviewed for solder process capability |
|---------------------------|--|

Product Compliance Disclaimer

This information is provided based on reasonable inquiry of our suppliers and represents our current actual knowledge based on the information they provided. This information is subject to change. The part numbers that TE has identified as EU RoHS compliant have a maximum concentration of 0.1% by weight in homogenous materials for lead, hexavalent chromium, mercury, PBB, PBDE, DBP, BBP, DEHP, DIBP, and 0.01% for cadmium, or qualify for an exemption to these limits as defined in the Annexes of Directive 2011/65/EU (RoHS2). Finished electrical and electronic equipment products will be CE marked as required by Directive 2011/65/EU. Components may not be CE marked. Additionally, the part

numbers that TE has identified as EU ELV compliant have a maximum concentration of 0.1% by weight in homogenous materials for lead, hexavalent chromium, and mercury, and 0.01% for cadmium, or qualify for an exemption to these limits as defined in the Annexes of Directive 2000/53/EC (ELV). Regarding the REACH Regulation, the information TE provides on SVHC in articles for this part number is based on the latest European Chemicals Agency (ECHA) 'Guidance on requirements for substances in articles' posted at this URL: <https://echa.europa.eu/guidance-documents/guidance-on-reach>

Also in the Series | DEUTSCH DT-XT



Automotive Housings(12)

Customers Also Bought



TE Part #2-330648-1
PIDG 22-16 22-18 MIL R 4; TAPE



TE Part #788189-2
CPC 17-3 RCPT ASY,REV SEX



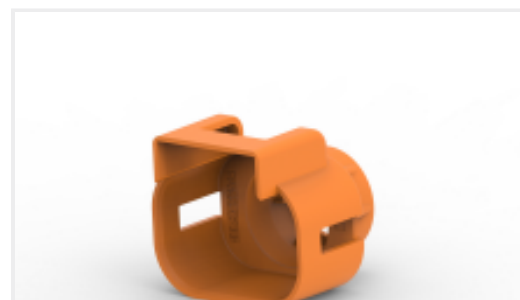
TE Part #2177090-3
STEEL, OUTER FERRULE, 8MM HV, 25SQMM



TE Part #1-1633961-2
CRIMPER, INSULATION F PREMIUM



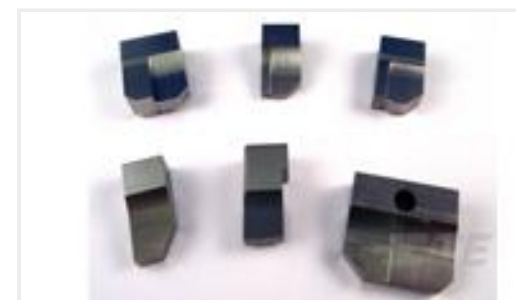
TE Part #1587940-3
CABLE SEAL RETAINER, SIZE C



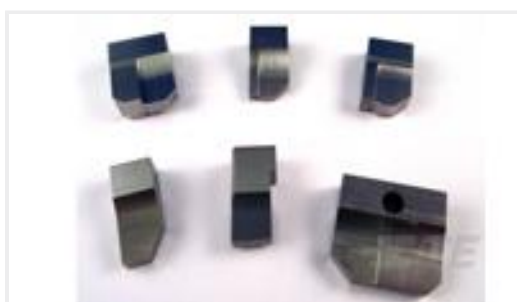
TE Part #2103013-3
CABLE SEAL RETAINER, SIZE 2, OR, HVA280



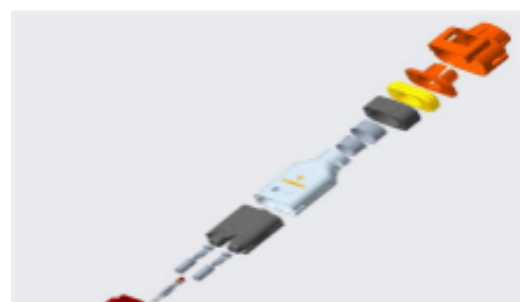
TE Part #2208669-3
8MM HV, CONTACT, ASSY



TE Part #4-1633932-0
ANVIL, COMBINATION



TE Part #464291-5
ANVIL, SAND-BLASTED 12-10



TE Part #YHV280-2PM-P-4MM-B
HVA280-2pnm, pass, 4sqmm, Key B

Documents

[Product Drawings](#)



8CCT RECEP BLACK K A W/LARGE SEAL

English

CAD Files

3D PDF

3D

Customer View Model

[ENG_CVM_CVM_2600038-7_1.2d_dxf.zip](#)

English

Customer View Model

[ENG_CVM_CVM_2600038-7_1.3d_igs.zip](#)

English

Customer View Model

[ENG_CVM_CVM_2600038-7_1.3d_stp.zip](#)

English

By downloading the CAD file I accept and agree to the [Terms and Conditions](#) of use.

Product Specifications

Application Specification

English