

1-929974-4 ✓ ACTIVE

AMP | Round Connector System

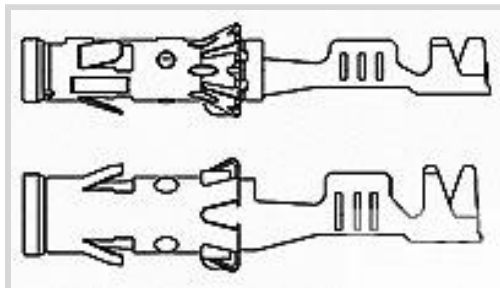
TE Internal #: 1-929974-4

Socket, Pin Diameter 2.5 mm [.098 in], 20 – 17 AWG Wire Size, .5 – 1 mm<sup>2</sup> Wire Size, Sealable, Round Connector System, Automotive Terminals

[View on TE.com >](#)



Terminals & Splices > Automotive Terminals > ROUND CONNECTOR SYSTEM, PIN AND SOCKET



Terminal Type: **Socket**

Mating Pin Diameter: 2.5 mm [.098 in]

Terminal Transmits: 25 – 40 A (Power)

Wire Size: .5 – 1 mm<sup>2</sup>

[All Round Connector System, Pin and Socket \(47\)](#)

### Features

#### Operation/Application

Compatible With Wire Base Material	Copper
------------------------------------	--------

#### Packaging Features

Packaging Method	Strip
Packaging Quantity	3000

#### Usage Conditions

Insulation Option	Uninsulated
Operating Temperature (Max)	130 °C, 80 °C, 125 °C, 105 °C, 100 °C, 90 °C, 85 °C, 110 °C, 120 °C [248 °F][221 °F][230 °F][176 °F][194 °F][185 °F][212 °F][266 °F][257 °F]
Operating Temperature Range	-40 – 130 °C [-40 – 266 °F]

#### Termination Features

Termination Method to Wire & Cable	Crimp
Product Terminates To	Wire

#### Product Type Features

Receptacle Style	180°
Sealable	Yes
Primary Locking Feature	Locking Lance



### Dimensions

Compatible Insulation Diameter Range	1.2 – 2.1 mm [.047 – .082 in]
Wire Size	.5 – 1 mm <sup>2</sup>
Wire Size Search	1 mm <sup>2</sup> , .5 mm <sup>2</sup> , .75 mm <sup>2</sup> , .6 mm <sup>2</sup>

### Contact Features

Typical Current Rating	40 A
Crimp Type	F-Crimp
Contact Size	2.5mm
Contact Fabrication	Stamped & Formed
Wire Contact Termination Area Plating Material	Tin
Terminal Type	Socket
Mating Pin Diameter	2.5 mm [.098 in]
Interface Plating	Silver (Ag)

### Body Features

Terminal Seal Type	Single Wire Seal (SWS)
--------------------	------------------------

### Other

Terminal Transmits	25 – 40 A (Power)
EU RoHS Compliance	Compliant
EU ELV Compliance	Compliant

### Product Compliance

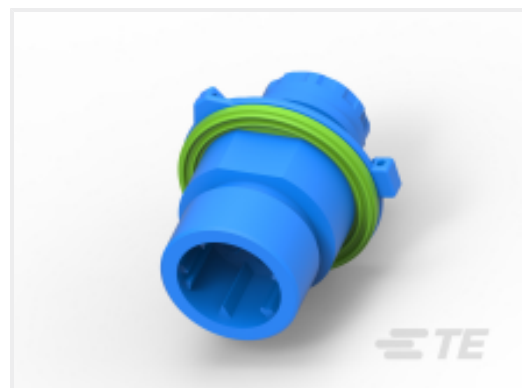
[For compliance documentation, visit the product page on TE.com>](#)

EU RoHS Directive 2011/65/EU	Compliant
EU ELV Directive 2000/53/EC	Compliant
China RoHS 2 Directive MIIT Order No 32, 2016	No Restricted Materials Above Threshold
EU REACH Regulation (EC) No. 1907/2006	Current ECHA Candidate List: JUNE 2024 (241) Candidate List Declared Against: JAN 2024 (240) Does not contain REACH SVHC
Halogen Content	Low Halogen - Br, Cl, F, I < 900 ppm per homogenous material. Also BFR/CFR/PVC Free
Solder Process Capability	Not applicable for solder process capability

Product Compliance Disclaimer

This information is provided based on reasonable inquiry of our suppliers and represents our current actual knowledge based on the information they provided. This information is subject to change. The part numbers that TE has identified as EU RoHS compliant have a maximum concentration of 0.1% by weight in homogenous materials for lead, hexavalent chromium, mercury, PBB, PBDE, DBP, BBP, DEHP, DIBP, and 0.01% for cadmium, or qualify for an exemption to these limits as defined in the Annexes of Directive 2011/65/EU (RoHS2). Finished electrical and electronic equipment products will be CE marked as required by Directive 2011/65/EU. Components may not be CE marked. Additionally, the part numbers that TE has identified as EU ELV compliant have a maximum concentration of 0.1% by weight in homogenous materials for lead, hexavalent chromium, and mercury, and 0.01% for cadmium, or qualify for an exemption to these limits as defined in the Annexes of Directive 2000/53/EC (ELV). Regarding the REACH Regulation, the information TE provides on SVHC in articles for this part number is based on the latest European Chemicals Agency (ECHA) 'Guidance on requirements for substances in articles' posted at this URL: <https://echa.europa.eu/guidance-documents/guidance-on-reach>

## Compatible Parts



TE Part # CAT-C4962-CH8172  
Circular DIN Housings



TE Part # 58606-1  
PROCRIMP 1.5 & 2.5MM PIN/SEAL



TE Part # 1-1579007-8  
EXTRACTION TOOL



TE Part # 828920-1  
EINZELADERDICHTUNG



TE Part # 2151139-1  
OCEAN-2.0-APPLICATOR-S-080F160OV-RSM



TE Part # 2151139-2  
OCEAN-2.0-APPLICATOR-S-080F160OV-RSA



TE Part # 2305570-1  
Strip Terminal Cutter-Side Feed-No Crimp



TE Part # 2387332-1  
SDE F 2.5mm CONTACT 0.35-1.0mm2 ASSY



TE Part # 2387332-2  
SDE F 2.5mm CONTACT 0.35-1.0mm2 DIE SET



TE Part # 5-2151139-1  
OCEAN-2.0-APPLICATOR-S-080F160OV-RSM



TE Part # 5-2151139-2  
OCEAN-2.0-APPLICATOR-S-080F160OV-RSA



TE Part # 58606-2  
PC DIE 1.5 & 2.5 PIN W/S



TE Part # 7-2151139-7  
OCEAN\_2.0\_SPARE\_PART\_KIT-080F160OV

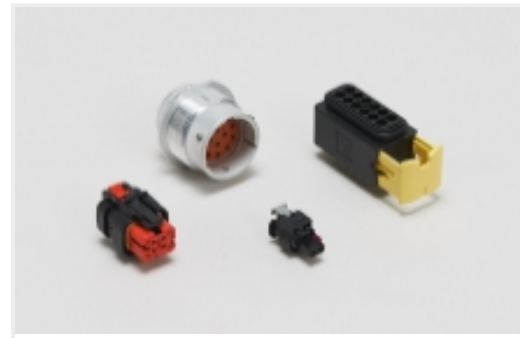


TE Part # 7-2266055-7  
OC-080F160O-CRIMPTOOLINGKIT

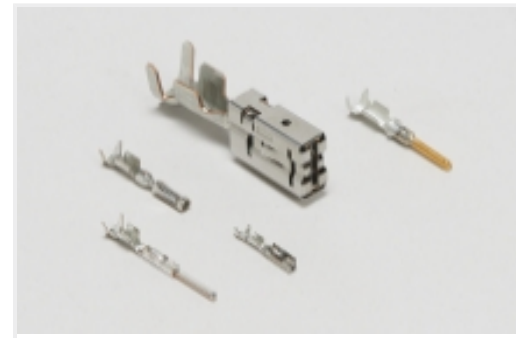
## Also in the Series | Round Connector System



Automotive Connector Caps & Covers (5)



Automotive Housings(12)



Automotive Terminals(47)



Connector Seals & Cavity Plugs(5)



DIN Connectors(3)



Insertion & Extraction Tools(8)

## Customers Also Bought



TE Part #1-967325-1  
2,5MM BU-GEH 4P



TE Part #964267-1  
TIMER, RECEPTACLE AND TAB



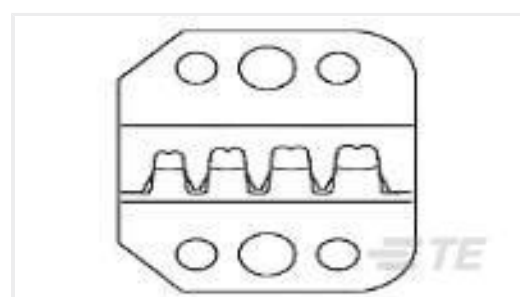
TE Part #4-967630-1  
FLACHSTE-GEH2,8 21P



TE Part #184346-1  
2X2 CAP ASY KEY A C3



TE Part #828920-1  
EINZELADERDICHTUNG



TE Part #58603-2  
PROCRIMP DIE JPT 2.8MM TAB



TE Part #967376-1  
FLA-STE-GEH KPL16P



TE Part #936238-2  
090III 4P CAP ASSY BLACK

## Documents

### CAD Files

Customer View Model

[ENG\\_CVM\\_1-929974-4\\_A5.3d\\_igs.zip](#)

English

Customer View Model

[ENG\\_CVM\\_1-929974-4\\_A5.3d\\_stp.zip](#)



English

**Customer View Model**

[ENG\\_CVM\\_1-929974-4\\_A5.2d\\_dxf.zip](#)

English

[3D PDF](#)

English

By downloading the CAD file I accept and agree to the [Terms and Conditions](#) of use.

---

**Datasheets & Catalog Pages**

[CONNECTOR SELECTOR](#)

English

---

**Product Specifications**

[Application Specification](#)

English

[Application Specification](#)

German

[Application Specification](#)

English