

PRODUCT NUMBER  
10072353-YXX-XXXLF

PLATING  
(AS AVAILABLE)

- S= 0.38µm GOLD/GXT ON CONTACT AREA  
2.0µm MIN MATTE TIN ON TAIL
- G= 0.76µm GOLD/GXT ON CONTACT AREA  
2.0µm MIN MATTE TIN ON TAIL
- F= GOLD FLASH ON CONTACT AREA  
2.0µm MIN MATTE TIN ON TAIL
- T= 2-6µm FULL MATTE TIN

1.27µm NICKEL MIN UNDERLAYER FOR ALL PLATING VERSIONS

- RoHS COMPATIBLE, SEE NOTE 6
- PACKAGING, SEE NOTE 5  
(MAY BE SUBJECT TO TOOLING FEES)
- NB OF POSITIONS PER ROW, 2 TO 25
- V = CUSTOMER SPECIAL  
- = ALL GLOBAL CUSTOMERS
- PIN STYLE, SEE TABLE  
(AS AVAILABLE)

PIN STYLE	DIM "A"	DIM "B"
01	4.00	2.00
02	7.00	2.00
03	3.20	2.00
04	6.00	2.50

NOTES:

1. HOUSING MATERIAL : HIGH TEMPERATURE THERMOPLASTIC. UL94V-0 COLOR: BLACK
2. PIN MATERIAL : COPPER ALLOY
3. TO DETERMINE DIMENSIONS:  
N = NUMBER OF POSITIONS PER ROW.
4. 7N MIN PIN RETENTION IN EITHER DIRECTION.
5. PACKAGING :  
= PLASTIC BOX  
U = TUBE AVAILABLE FROM 06 TO 50 POS  
A = TAPE & REEL WITH PICK UP CAP FROM 04 TO 50 POS  
AV = TAPE & REEL WITH PICK UP CAP FOR DEDICATED CUSTOMER

6. RoHS COMPATIBLE PRODUCT SPECIFICATIONS

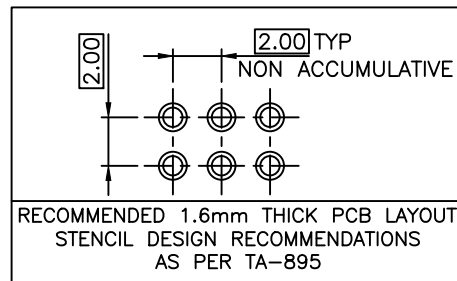
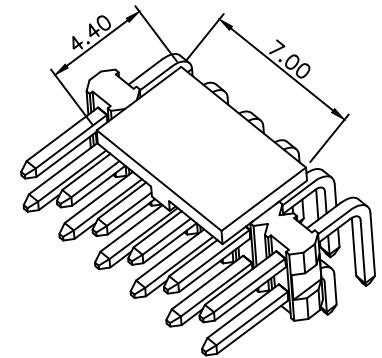
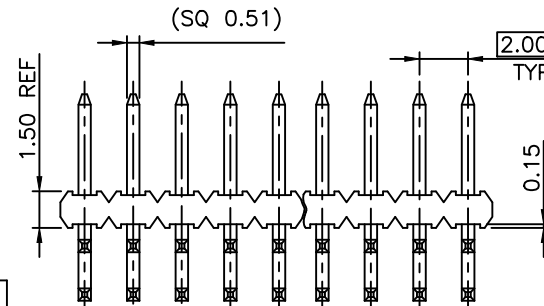
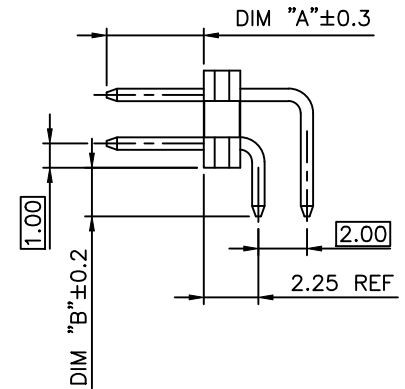
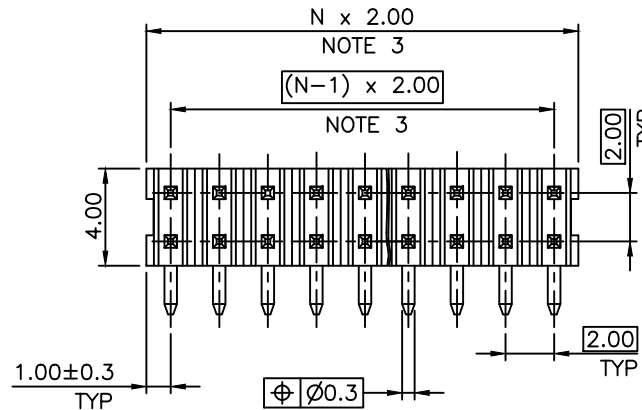
- a - PLATING:  
- "LF" MEANS THE PRODUCT IS LEAD-FREE, 2µm MINIMUM MATTE TIN OVER 1.27µm MINIMUM NICKEL UNDERPLATE.
- b - MANUFACTURING PROCESS COMPATIBILITY  
- THE HOUSING WILL WITHSTAND EXPOSURE TO 260°C PEAK TEMPERATURE FOR 30 SECONDS MAX IN A CONVECTION, INFRA-RED OR VAPOR PHASE OR REFLOW OVEN.
- c - LABELING:  
- MEETS PACKAGING SPECS AS PER GS-14-920  
- THIS PRODUCT MEETS EUROPEAN DIRECTIVES AND OTHER COUNTRY REGULATIONS AS DISCRIBED IN GS-47-0004

7. THIS PART SERIES IS NOT INITIALLY INTENDED FOR AUTOMOTIVE APPLICATIONS. ADDITIONAL FEES ARE CHARGEABLE FOR ANY ADDITIONAL QUALIFICATION AND TEST REPORTS PERFORMED OUTSIDE THE SCOPE OF THE STANDARD PRODUCT SPECIFICATIONS.

8. UNLESS OTHERWISE APPROVED BY AMPHENOL, ALL PARTS AND COMPONENTS ARE DESIGNED & BUILT ACCORDING TO AMPHENOL'S SPECIFICATIONS WHICH ARE SUBJECT TO CHANGE WITHOUT NOTICE.

**EXTENDED RANGE**

- TOOLING FEASIBILITY CONFIRMED
- SAMPLES ON DEMAND
- AVAILABILITY ON DEMAND



mat'l. code		surface		tolerance		projection		product family	
SEE NOTES		ISO 1302		ISO 406 ISO 1101		mm		MINITEK	
ltr	ecn no	dr	date	tolerances unless otherwise specified		mm		title	
A	F06-0326	LMU	07.01.04	angles	linear	x.x ±0.3	UNSHR.HEADER		
B	F08-0145	ELA	17.04.08			x.xx ±0.13	RA DR PIP		
C	B-19190	LMU	14.10.24	±2'		x.xxx ±0.05	scale 5:1	dwg no	
D	F-39425	LMU	20.12.22	dr	L.MULIN	06.09.14	sheet 1 of 1		size
E	F-40122	DDE	21.02.24	engr	J.COMPAGNON	06.09.14	10072353		A3
F	F-54462	DDE	25.01.31	chr	J.COMPAGNON	06.09.14	type CUSTOMER		Drawing
sheet index		revision sheet							

Amphenol FCI FCIconnect.com Copyright FCI