

1-160759-1 ✓ ACTIVE

Positive Lock | Mark I, Positive Lock 250

TE Internal #: 1-160759-1

Receptacle, 20 – 15 AWG Wire Size, .51 – 1.65 mm² Wire Size,
Mating Tab Width 6.35 mm [.25 in], Straight, Brass, Positive Lock
250, Quick Disconnects

[View on TE.com >](#)



Terminals & Splices > Quick Disconnects



Quick Disconnect Terminal Type: **Receptacle**

Wire Size: .51 – 1.65 mm²

Mating Tab Width: 6.35 mm [.25 in]

Mating Tab Thickness: .81 mm [.032 in]

Features

Contact Features

Quick Disconnect Terminal Type	Receptacle
Mating Tab Width	6.35 mm [.25 in]
Mating Tab Thickness	.81 mm [.032 in]
Terminal Orientation	Straight
Contact Base Material	Brass
Terminal Plating Material	Pre-Tin
Crimp Type	F-Crimp
Barrel Type	Open

Dimensions

Wire Size	.51 – 1.65 mm ²
Product Length	22.3 mm [.88 in]
Compatible Insulation Diameter Range	2.3 – 3.3 mm [.09 – .13 in]
Terminal Material Thickness	.41 mm [.016 in]

Packaging Features

Packaging Method	Strip/Reel
------------------	------------



Packaging Quantity	1500
--------------------	------

Product Type Features

Insertion Force	Low
-----------------	-----

Usage Conditions

Insulation Option	Uninsulated
-------------------	-------------

Operating Temperature Range	-40 – 110 °C[-40 – 230 °F]
-----------------------------	----------------------------

Other

EU RoHS Compliance	Compliant
--------------------	-----------

EU ELV Compliance	Compliant
-------------------	-----------

Configuration Features

Compatible With Wire & Cable Type	Discrete Wire
-----------------------------------	---------------

Connection Capacity	Single
---------------------	--------

Termination Features

Product Terminates To	Wire & Cable
-----------------------	--------------

Mechanical Attachment

Wire Insulation Support	With
-------------------------	------

Mating Retention Type	Dimple
-----------------------	--------

Industry Standards

Compatible With Agency/Standards Products	UL
---	----

Product Compliance

[For compliance documentation, visit the product page on TE.com>](#)

EU RoHS Directive 2011/65/EU	Compliant
------------------------------	-----------

EU ELV Directive 2000/53/EC	Compliant
-----------------------------	-----------

China RoHS 2 Directive MIIT Order No 32, 2016	No Restricted Materials Above Threshold
---	---

EU REACH Regulation (EC) No. 1907/2006	Current ECHA Candidate List: JUNE 2024 (241) Candidate List Declared Against: JUNE 2024 (241) Does not contain REACH SVHC
--	---

Halogen Content	Low Halogen - Br, Cl, F, I < 900 ppm per homogenous material. Also BFR/CFR/PVC Free
-----------------	---

Solder Process Capability	Not applicable for solder process capability
---------------------------	--

Product Compliance Disclaimer

This information is provided based on reasonable inquiry of our suppliers and represents our current actual knowledge based on the information they provided. This information is subject to change. The part numbers that TE has identified as EU RoHS compliant have a maximum concentration of 0.1% by weight in homogenous materials for lead, hexavalent chromium, mercury, PBB, PBDE, DBP, BBP, DEHP, DIBP, and 0.01% for cadmium, or qualify for an exemption to these limits as defined in the Annexes of Directive 2011/65/EU (RoHS2). Finished electrical and electronic equipment products will be CE marked as required by Directive 2011/65/EU. Components may not be CE marked. Additionally, the part numbers that TE has identified as EU ELV compliant have a maximum concentration of 0.1% by weight in homogenous materials for lead, hexavalent chromium, and mercury, and 0.01% for cadmium, or qualify for an exemption to these limits as defined in the Annexes of Directive 2000/53/EC (ELV). Regarding the REACH Regulation, the information TE provides on SVHC in articles for this part number is based on the latest European Chemicals Agency (ECHA) 'Guidance on requirements for substances in articles' posted at this URL: <https://echa.europa.eu/guidance-documents/guidance-on-reach>

Compatible Parts



TE Part # 1-154719-0
PL 250 REC HSG 1P NYLON NAT



TE Part # 281852-2
PL 250 REC HSG 4P NYLON BLACK



TE Part # 154719-2
PL 250 REC HSG 1P NYLON RED



TE Part # 154719-4
PL 250 REC HSG 1P NYLON YELLOW



TE Part # 520961-1
PL 250 HOUSING BLACK NYLON



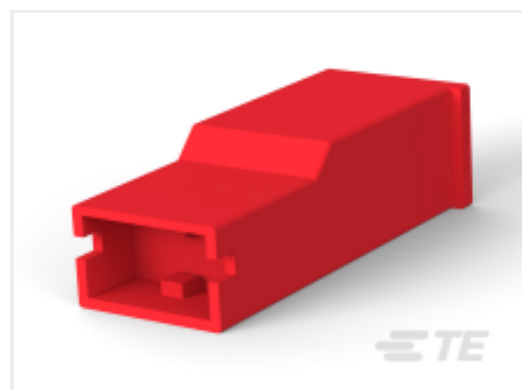
TE Part # 154719
250 HSG. PL MKI REC. BLACK



TE Part # 154719-1
250 HSG. PL MKI REC. NAT



TE Part # 926526-1
PL MKI 250 REC HSG 5P NYLON BLACK



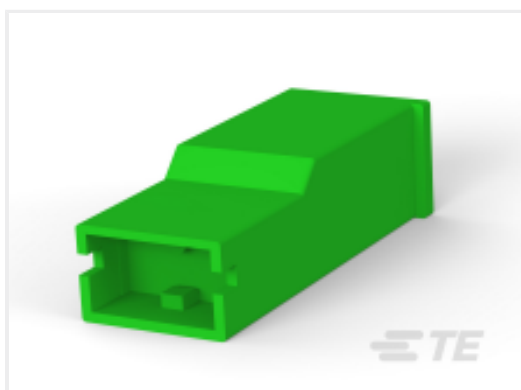
TE Part # 2-154719-0
250 PL EX HSG.,REC.,1P,RED



TE Part # 4-154719-0
POSITIVE LOCK (PL) RECEPTACLE



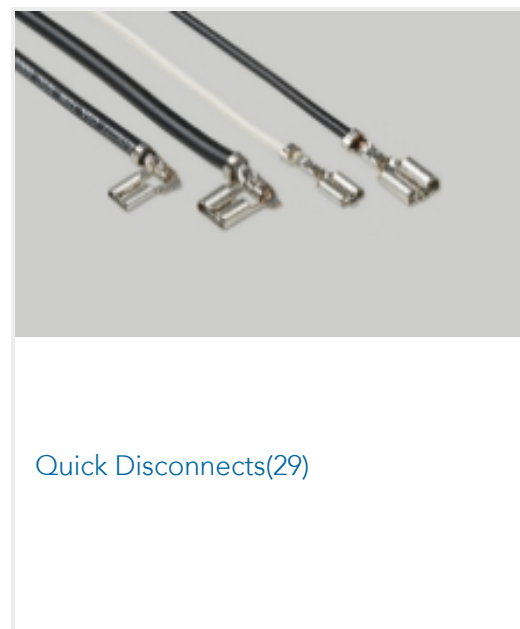
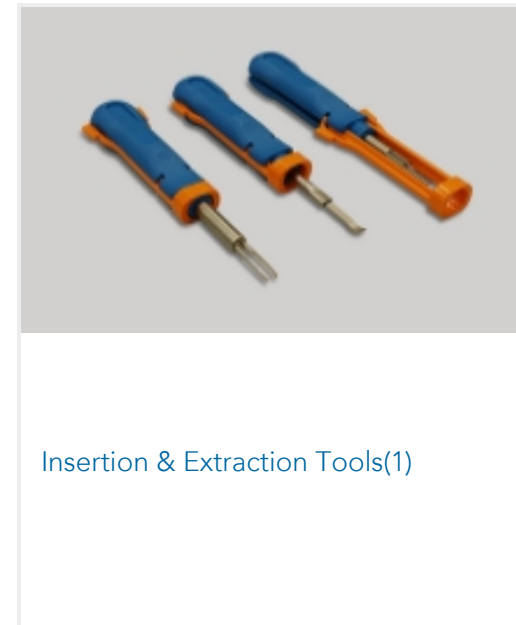
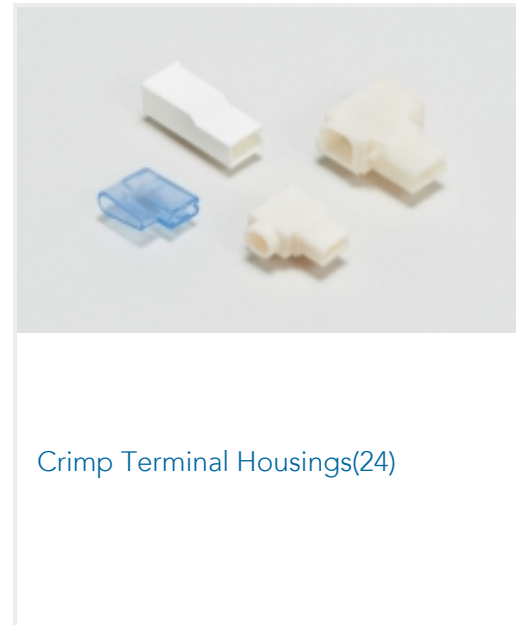
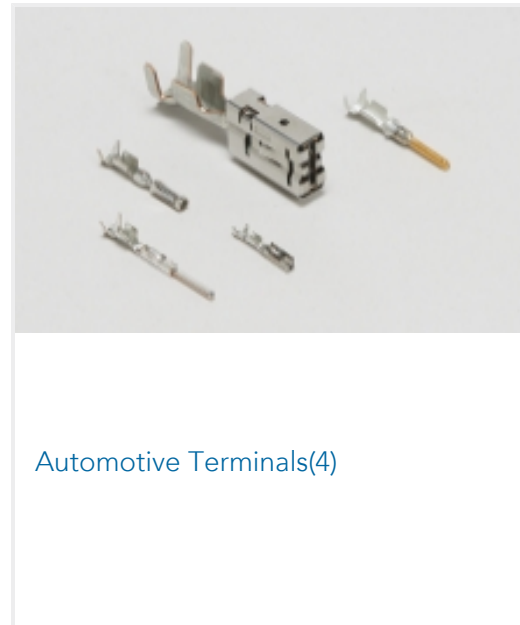
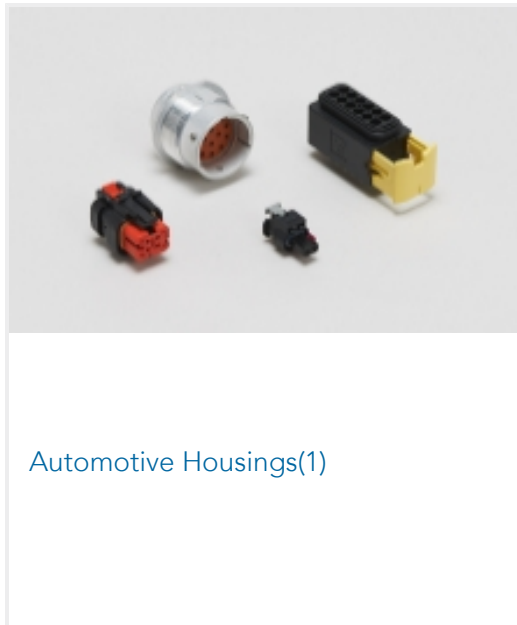
TE Part # 154719-9
PL 250 REC HSG 1P NYLON BROWN



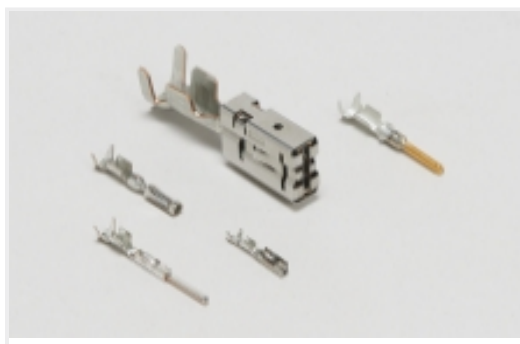
TE Part # 154719-5
PL 250 REC HSG 1P NYLON GREEN



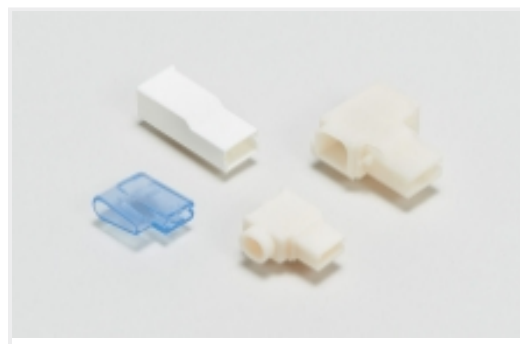
Also in the Series | **Mark I**



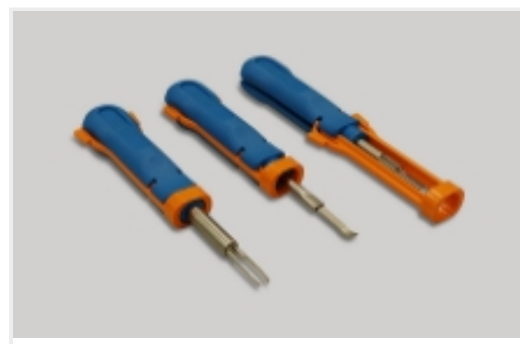
Also in the Series | **Positive Lock 250**



Automotive Terminals(1)



Crimp Terminal Housings(190)



Insertion & Extraction Tools(3)



Insulation Boots & Sleeves(4)



Quick Disconnects(185)

Customers Also Bought



TE Part #1-1969541-8
RETAINER, TPA, DUAL ROW, EP2.5



TE Part #2098164-2
Cover, 60 Position PDM, No Fuse Holder



TE Part #2302454-3
1-PORT MATENET FRAME,UTP, COD C



TE Part #3-1703884-2
2POS,SHORT CIRC SPR,HOUSING, ASSY,CODC



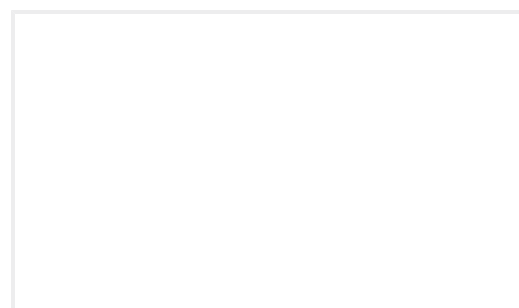
TE Part #1-1969540-4
HOUSING, PLUG, 14P,DUAL ROW, EP2.5



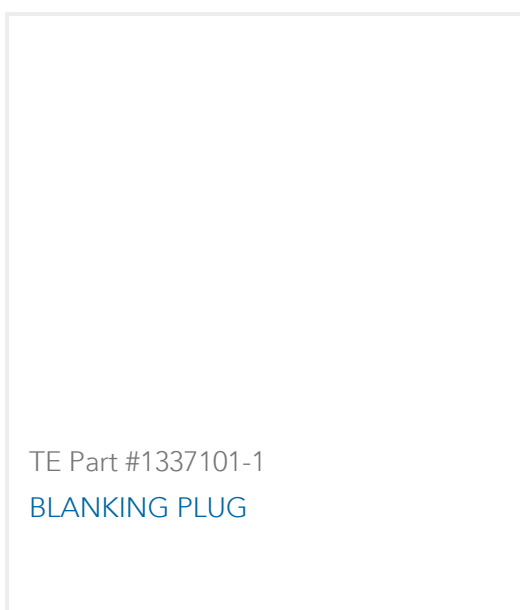
TE Part #1-1969540-8
HOUSING, PLUG, 18P,DUAL ROW, EP2.5



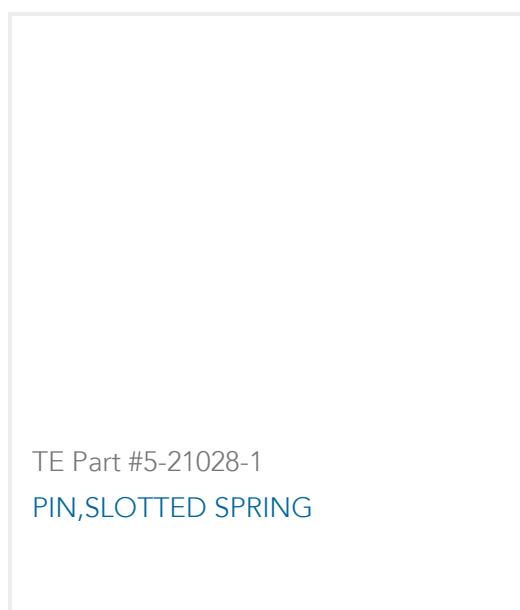
TE Part #2-1969540-2
HOUSING, PLUG, 22P,DUAL ROW, EP2.5



TE Part #2265185-1
CABLE ASSY, SUPER SEAL ANGLED



TE Part #1337101-1
BLANKING PLUG



TE Part #5-21028-1
PIN,SLOTTED SPRING

Documents



Product Drawings

250 PL MKI REC. 20-15AWG PTBR

English

CAD Files

3D PDF

3D

Customer View Model

[ENG_CVM_CVM_1-160759-1_AL.2d_dxf.zip](#)

English

Customer View Model

[ENG_CVM_CVM_1-160759-1_AL.3d_igs.zip](#)

English

Customer View Model

[ENG_CVM_CVM_1-160759-1_AL.3d_stp.zip](#)

English

By downloading the CAD file I accept and agree to the [Terms and Conditions](#) of use.

Datasheets & Catalog Pages

Positive Lock Receptacles

English

[1654742_HOUSEHOLD_APPLIANCES_RAST5](#)

English

Product Specifications

AMP positive lock MKI rec. terminal with latching device

Application Specification

Application Specification

English

EB**General Application Specification for Open Barrel Terminals

English

Application Specification

English

Agency Approvals

UL Report

English