



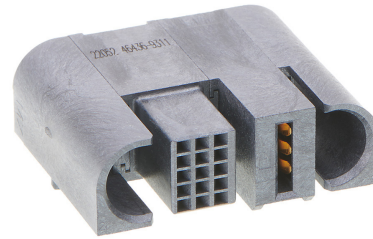
**Part Number :** [464369311](#)

**Product Description :** EXTreme Ten60Power Right-Angle Receptacle with Side Guides, 1 DC Power Circuit, 15 Signal Circuits, Press Fit Tail

**Series Number :** 46436

**Status :** Active

**Product Category :** Board-to-Board Connectors



---

## Documents & Resources

### Drawings

[464369311\\_sd.pdf](#)

[464361001-PK-000.pdf](#)

### 3D Models and Design Files

[464369311\\_stp.zip](#)

### Specifications


[PS-46436-100-001.pdf](#)

[464361000-TS-000.pdf](#)

---

## Product Environment Compliance

### Compliance

GADSL/IMDS	Compliant with Exemption 44; 34; 33
China RoHS	
EU ELV	Not Relevant
Low-Halogen Status	Low-Halogen per IEC 61249-2-21
REACH SVHC	Not Contained per D(2024)4144-DC (27 June 2024)
EU RoHS	Compliant per EU 2015/863

### [Multiple Part Product Compliance Statements](#)

- Eu RoHS
- REACH SVHC
- Low-Halogen

### [Multiple Part Industry Compliance Documents](#)

- IPC 1752A Class C
- IPC 1752A Class D
- Molex Product Compliance Declaration
- IEC-62474
- chemSHERPA (xml)

EU RoHS Certificate of Compliance

---

## Part Details

### General

Status	Active
Category	Board-to-Board Connectors
Series	46436
Description	EXTreme Ten60Power Right-Angle Receptacle with Side Guides, 1 DC Power Circuit, 15 Signal Circuits, Press Fit Tail
Application	Board-to-Board, Power, Signal
Comments	See Product Specification for details
Component Type	PCB Receptacle
Keyword	Ten60
Product Name	EXTreme Ten60Power
UPC	195842670686

### Agency

CSA	LR19980
UL	E29179

### Electrical

Current - Maximum per Contact	60.0A
Grounding to PCB	No
Voltage - Maximum	600V AC / 250V DC

### Physical

Circuits (Loaded)	16
Circuits (maximum)	16
Color - Resin	Black

Durability (mating cycles max)	200
Flammability	94V-0
Glow-Wire Capable	No
Guide to Mating Part	Side, Yes
Keying to Mating Part	None
Lock to Mating Part	No
Mated Height	10.00mm
Material - Metal	High Conductivity Copper
Material - Plating Mating	Gold
Material - Plating Termination	Tin
Material - Resin	Liquid Crystal Polymer
Net Weight	9.133/g
Number of Rows	1, 5
Orientation	Right Angle
Packaging Type	Tray
PC Tail Length	2.50mm, 3.28mm
PCB Locator	Yes
PCB Retention	Yes
PCB Thickness - Recommended	1.58mm
Pitch - Mating Interface	2.00mm, 5.50mm
Plating min - Mating	0.762µm
Plating min - Termination	2.540µm
Polarized to Mating Part	Yes
Polarized to PCB	Yes
(p)ower-(s)ignal Configuration	1p - 15s
Stackable	No
Temperature Range - Operating	-40° to +105°C
Termination Interface Style	Through Hole - Compliant Pin

---

## Mates With / Use With

### Mates with Part(s)

Description	Part Number
-------------	-------------

EXTreme Ten60Power Right-Angle Plug with Side Guides, 1 DC Power Circuit, 15 Signal Circuits, Press Fit Tail	<u>464379311</u>
--	------------------

---

---

This document was generated on Dec 16, 2024