

2214565-2 ✓ ACTIVE



zQSFP+/QSFP28

TE Internal #: 2214565-2

zQSFP+, Cage Assembly with Integrated Connector, .8mm [.032in]

Centerline, Sealable, Signal, Operating Temperature Range -55 – 105 °C [-67 – 221 °F]

[View on TE.com >](#)

Connectors > Pluggable IO Connectors & Cages



Pluggable I/O Product Type: **Cage Assembly with Integrated Connector**

Centerline (Pitch): **.8 mm [.032 in]**

Sealable: **Yes**

Circuit Application: **Signal**

Operating Temperature Range: **-55 – 105 °C [-67 – 221 °F]**

Features

Product Type Features

Pluggable I/O Product Type	Cage Assembly with Integrated Connector
Sealable	Yes
Form Factor	zQSFP+
Cage Type	Stacked

Housing Features

Centerline (Pitch)	.8 mm [.032 in]
Cage Material	Nickel Silver

Operation/Application

Circuit Application	Signal
Pluggable I/O Applications	SFP+ Stacked Belly-to-Belly
Heat Sink Compatible	No

Usage Conditions

Operating Temperature Range	-55 – 105 °C [-67 – 221 °F]
-----------------------------	-----------------------------

Electrical Characteristics

Data Rate (Max)	28 Gb/s
-----------------	---------

Configuration Features

Number of Positions	190
---------------------	-----



Number of Ports	6
Port Matrix Configuration	2 x 3
Number of Rear EONs per Port Column	3

Other

Included Lightpipe	Yes
EMI Containment Feature Type	Elastomeric Gasket
EU RoHS Compliance	Compliant
EU ELV Compliance	Compliant

Contact Features

Contact Current Rating (Max)	.5 A
Contact Underplating Material	Tin
Contact Mating Area Plating Material	Gold
PCB Contact Termination Area Plating Material	Gold
Contact Mating Area Plating Material Thickness	.76 µm[30 µin]

Termination Features

Termination Method to PCB	Through Hole - Press-Fit
Termination Post & Tail Length	2 mm[.079 in]

Dimensions

PCB Thickness (Recommended)	1.57 mm[.062 in]
-----------------------------	------------------

Industry Standards

UL Flammability Rating	UL 94V-0
------------------------	----------

Packaging Features

Packaging Method	Box & Tray
------------------	------------

Product Compliance

[For compliance documentation, visit the product page on TE.com>](#)

EU RoHS Directive 2011/65/EU	Compliant
EU ELV Directive 2000/53/EC	Compliant
China RoHS 2 Directive MIIT Order No 32, 2016	No Restricted Materials Above Threshold
EU REACH Regulation (EC) No. 1907/2006	Current ECHA Candidate List: JUNE 2024 (241) Candidate List Declared Against: JUNE 2024 (241)



Does not contain REACH SVHC

Halogen Content	Low Bromine/Chlorine - Br and Cl < 900 ppm per homogenous material. Also BFR /CFR/PVC Free
Solder Process Capability	Not applicable for solder process capability

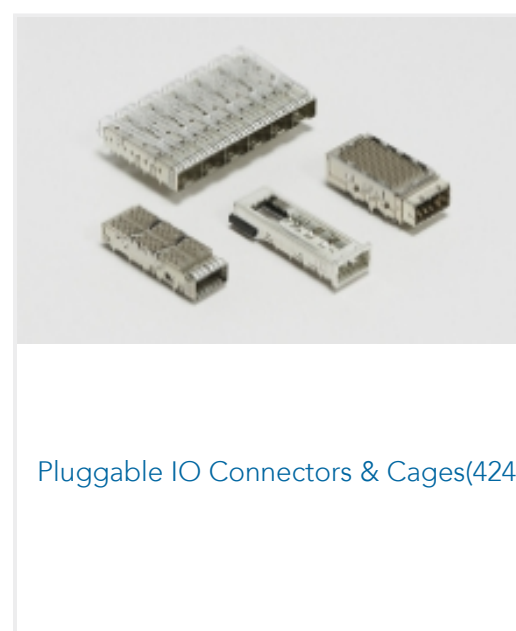
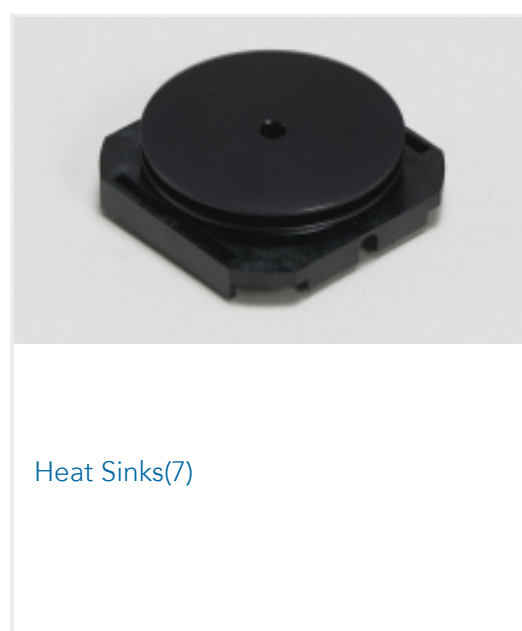
Product Compliance Disclaimer

This information is provided based on reasonable inquiry of our suppliers and represents our current actual knowledge based on the information they provided. This information is subject to change. The part numbers that TE has identified as EU RoHS compliant have a maximum concentration of 0.1% by weight in homogenous materials for lead, hexavalent chromium, mercury, PBB, PBDE, DBP, BBP, DEHP, DIBP, and 0.01% for cadmium, or qualify for an exemption to these limits as defined in the Annexes of Directive 2011/65/EU (RoHS2). Finished electrical and electronic equipment products will be CE marked as required by Directive 2011/65/EU. Components may not be CE marked. Additionally, the part numbers that TE has identified as EU ELV compliant have a maximum concentration of 0.1% by weight in homogenous materials for lead, hexavalent chromium, and mercury, and 0.01% for cadmium, or qualify for an exemption to these limits as defined in the Annexes of Directive 2000/53/EC (ELV). Regarding the REACH Regulation, the information TE provides on SVHC in articles for this part number is based on the latest European Chemicals Agency (ECHA) 'Guidance on requirements for substances in articles' posted at this URL: <https://echa.europa.eu/guidance-documents/guidance-on-reach>

Compatible Parts



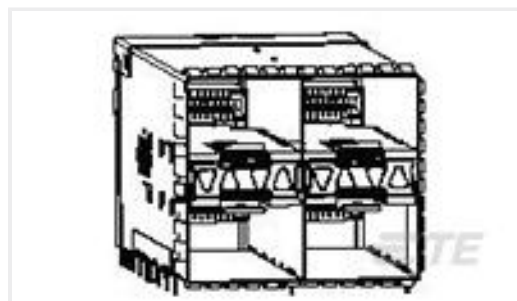
Also in the Series | zQSFP+/QSFP28



Customers Also Bought



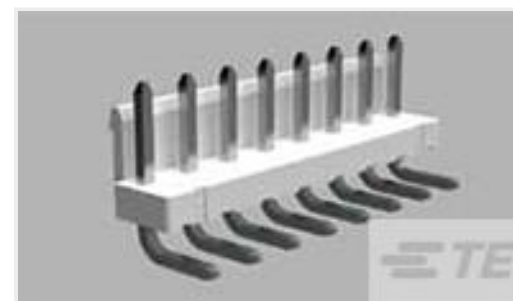
TE Part #5747236-6
15 MSFL PLUG RA 318 (SL,FM)



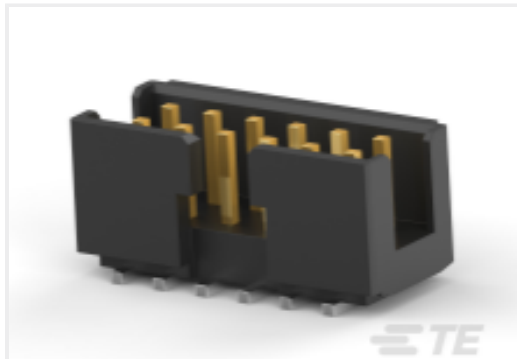
TE Part #2198325-6
zSFP+ STACKED 2X2 RECEPTACLE
ASSEMBLY



TE Part #643412-1
02P UMNL HDR ASSY POL 94VO



TE Part #647676-4
3.96 EP HDR ASSY 4P R/A



TE Part #1-2373376-2
12P,2MM,SHRD HDR,DRVT,SMD,0.1
AU,TB



TE Part #2344604-1
50 AMP CARD EDGE ASSEMBLY



TE Part #1-2314846-2
12P,2MM,BB,REC,DRVT,SMD,AU.76,
TB,W/CP



TE Part #0460-244-16141
PIN, SOLID, SIZE 16, EXTENDED PCB,
NI



TE Part #474812-E
SRCA 1,27 10 M 1-KS SMD 137 E1 094
* GUR



TE Part #474819-E
SRCP 1,27 10 M 1-KS SMD 137 E1 094
* GU-

Documents

CAD Files

3D PDF

3D

Customer View Model

[ENG_CVM_CVM_2214565-2_A.2d_dxf.zip](#)

English

Customer View Model

[ENG_CVM_CVM_2214565-2_A.3d_igs.zip](#)

English

Customer View Model

[ENG_CVM_CVM_2214565-2_A.3d_stp.zip](#)

English

By downloading the CAD file I accept and agree to the [Terms and Conditions](#) of use.

Datasheets & Catalog Pages

[QSFP28/56 and zQSFP+ Interconnects](#)

English

Product Specifications

2214565-2

zQSFP+, Cage Assembly with Integrated Connector, .8mm [.032in] Centerline,
Sealable, Signal, Operating Temperature Range -55 – 105 °C [-67 – 221 °F]



Product Specification

English