

5-102316-8 ✓ ACTIVE

AMPMODU | AMPMODU IV/V

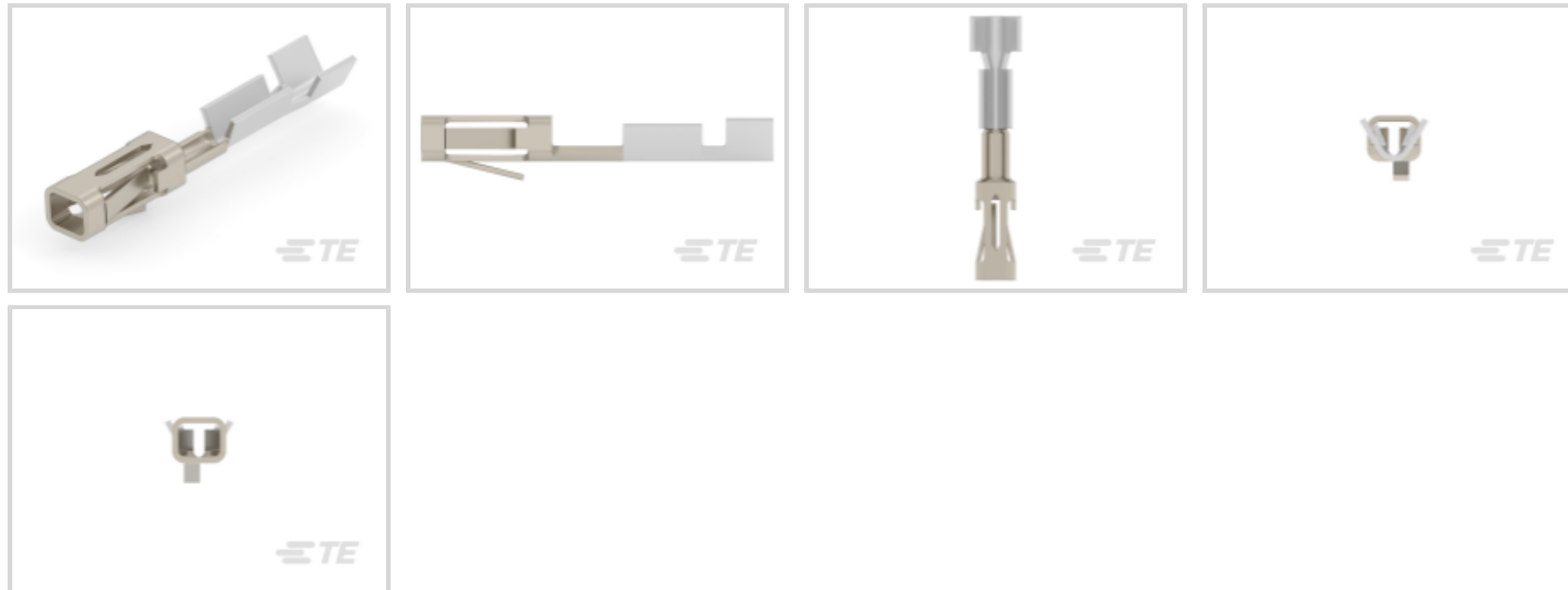
TE Internal #: 5-102316-8

Socket Contact, Gold, 250 VAC, Discrete Wire, 32 – 27 AWG Wire Size, .03 – .1 mm² Wire Size, 59.2 – 197.35 CMA Wire Size, Crimp, AMPMODU IV/V

[View on TE.com >](#)



Connectors > Contacts > Connector Contacts



Contact Type: **Socket**

Contact Mating Area Plating Material: **Gold**

Wire Contact Termination Area Plating Material: **Tin**

Operating Voltage: **250 VAC**

Compatible With Wire & Cable Type: **Discrete Wire**

Features

Industry Standards

Compatible With Approved Standards Products	UL E28476, CSA LR7189
---	-----------------------

Product Type Features

Applied Pressure	Standard
------------------	----------

Mechanical Attachment

Wire Insulation Support	With
-------------------------	------

Packaging Features

Packaging Method	Reel
------------------	------

Packaging Quantity	12500
--------------------	-------

Electrical Characteristics

Termination Resistance	12 mΩ
------------------------	-------

Dielectric Withstanding Voltage (Max)	750 V
---------------------------------------	-------

Insulation Resistance	5000 MΩ
-----------------------	---------

Operating Voltage	250 VAC
-------------------	---------



Contact Features

	100 – 200 µin
Mating Square Post Dimension	.64 mm[.025 in]
Wire Contact Termination Area Plating Material Finish	Matte
Contact Type	Socket
Contact Mating Area Plating Material	Gold
Wire Contact Termination Area Plating Material	Tin
Contact Base Material	Copper Tin Phosphor Bronze
Contact Current Rating (Max)	3 A

Configuration Features

Compatible With Wire & Cable Type	Discrete Wire
-----------------------------------	---------------

Termination Features

Termination Method to Wire & Cable	Crimp
Product Terminates To	Wire & Cable

Dimensions

Wire Size	59.2 – 197.35 CMA
-----------	-------------------

Usage Conditions

Operating Temperature Range	-65 – 105 °C[-85 – 221 °F]
-----------------------------	----------------------------

Operation/Application

Circuit Application	Power & Signal
---------------------	----------------

Other

EU RoHS Compliance	Compliant
EU ELV Compliance	Compliant

Product Compliance

[For compliance documentation, visit the product page on TE.com>](#)

EU RoHS Directive 2011/65/EU	Compliant
EU ELV Directive 2000/53/EC	Compliant
China RoHS 2 Directive MIIT Order No 32, 2016	No Restricted Materials Above Threshold
EU REACH Regulation (EC) No. 1907/2006	Current ECHA Candidate List: JUNE 2024 (241) Candidate List Declared Against: JUNE 2024 (241)



Does not contain REACH SVHC

Halogen Content

Low Halogen - Br, Cl, F, I < 900 ppm per homogenous material. Also BFR/CFR/PVC Free

Solder Process Capability

Not applicable for solder process capability

Product Compliance Disclaimer

This information is provided based on reasonable inquiry of our suppliers and represents our current actual knowledge based on the information they provided. This information is subject to change. The part numbers that TE has identified as EU RoHS compliant have a maximum concentration of 0.1% by weight in homogenous materials for lead, hexavalent chromium, mercury, PBB, PBDE, DBP, BBP, DEHP, DIBP, and 0.01% for cadmium, or qualify for an exemption to these limits as defined in the Annexes of Directive 2011/65/EU (RoHS2). Finished electrical and electronic equipment products will be CE marked as required by Directive 2011/65/EU. Components may not be CE marked. Additionally, the part numbers that TE has identified as EU ELV compliant have a maximum concentration of 0.1% by weight in homogenous materials for lead, hexavalent chromium, and mercury, and 0.01% for cadmium, or qualify for an exemption to these limits as defined in the Annexes of Directive 2000/53/EC (ELV). Regarding the REACH Regulation, the information TE provides on SVHC in articles for this part number is based on the latest European Chemicals Agency (ECHA) 'Guidance on requirements for substances in articles' posted at this URL: <https://echa.europa.eu/guidance-documents/guidance-on-reach>

Compatible Parts



TE Part # 2836135-2
OCEAN_2.0_APPLICATOR-S-033F055OA-SSA



TE Part # 843996-3
TOOL, EXTRACTION RESET

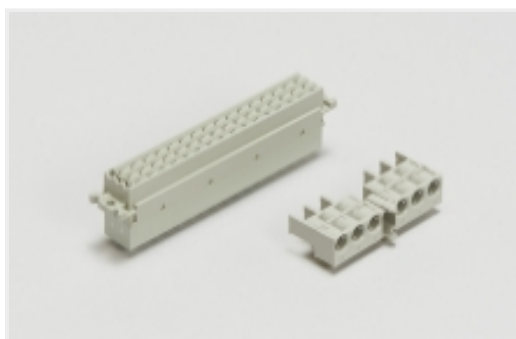


TE Part # 91541-1
CCII MOD IV 1 2 REC 32-27 ASSY



TE Part # 7-2836135-7
OCEAN_2.0_SPARE_PART_KIT-033F055O


Also in the Series | AMPMODU IV/V



Backplane Connector Housings(1)



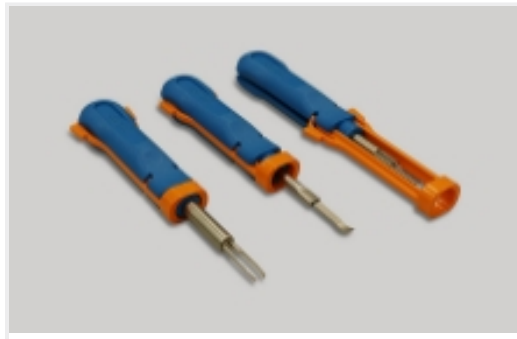
Connector Caps & Covers(11)



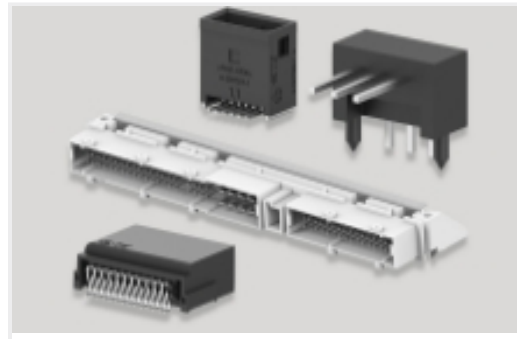
Connector Contacts(271)



Connector Hardware(11)



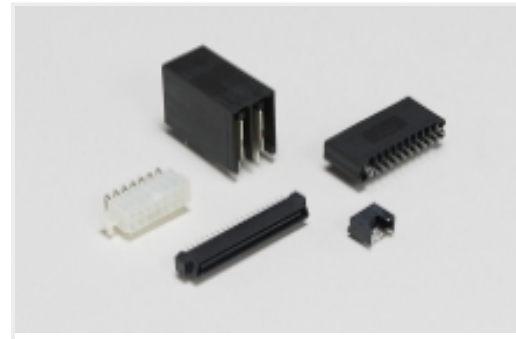
Insertion & Extraction Tools(4)



PCB Headers & Receptacles(517)



Rectangular Connector Housings(5)



Standard Rectangular Connectors(3)



Wire-to-Board Connector Assemblies & Housings(394)

Customers Also Bought



TE Part #5745410-7
09 PLUG SP/MS STD



TE Part #1-35787-0
N PIDG RING 12-10 8



TE Part #322777
PIDG SPDFLG 22-16COMM22-18MIL6



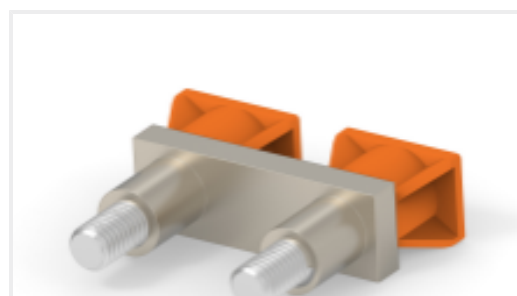
TE Part #1658642-2
PLUG ASSY,9P,HDP-20,CN



TE Part #826925-5
5P MOD2 STIFT LEI



TE Part #42068
110 FASTON REC 22-18 AWG BR



TE Part #1SNK916302R0000
JB16-2



TE Part #2302451-1
MATENET, MALE INSERT MODUL



TE Part #4-643817-0
10P MTA156 CONN ASSY 18AWG LF

Documents



Product Drawings

[MOD IV RECP PLAD 30 DPLX LF](#)

English

CAD Files

[3D PDF](#)

3D

Customer View Model

[ENG_CVM_CVM_5-102316-8_AF_c-5-102316-8-af.2d_dxf.zip](#)

English

Customer View Model

[ENG_CVM_CVM_5-102316-8_AF_c-5-102316-8-af.3d_igs.zip](#)

English

Customer View Model

[ENG_CVM_CVM_5-102316-8_AF_c-5-102316-8-af.3d_stp.zip](#)

English

By downloading the CAD file I accept and agree to the [Terms and Conditions](#) of use.

Datasheets & Catalog Pages

[AMP MODU IV & V Section of Catalog 1307819](#)

English

[AMPMODU_INTERCONNECTION_SYSTEM_SECTION5_CONT](#)

English

[1-1773720-9_AMPMODU_MOD_IV_V_QRG](#)

English

Product Specifications

[Application Specification](#)

English