



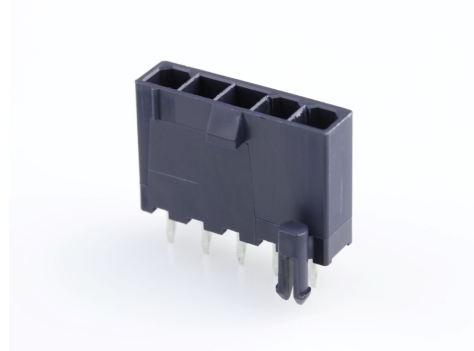
Part Number : [1726470105](#)

Product Description : Mini-Fit Jr. Header, Single Row, Vertical, 5 Circuits, Nylon, 94V-2, Matte Tin (Sn) Plating, Glow-Wire Capable, Black

Series Number : 172647

Status : Active

Product Category : PCB Headers and Receptacles



Documents & Resources

Drawings

[1726470105_sd.pdf](#)

[PK-5566-002-000.pdf](#)

3D Models and Design Files

[1726470105_stp.zip](#)

Specifications

[PS-5556-001-001.pdf](#)

[55560001-TS-000.pdf](#)

[TS-5556-002-001.pdf](#)

Product Environment Compliance

Compliance

GADSL/IMDS	Not Relevant
China RoHS	
EU ELV	Not Relevant
Low-Halogen Status	Not Low-Halogen per IEC 61249-2-21
REACH SVHC	Not Contained per D(2024)6225-DC (07 Nov 2024)
EU RoHS	Compliant per EU 2015/863

Multiple Part Product Compliance Statements

- Eu RoHS
- REACH SVHC
- Low-Halogen

Multiple Part Industry Compliance Documents

- IPC 1752A Class C
- IPC 1752A Class D
- Molex Product Compliance Declaration
- IEC-62474
- chemSHERPA (xml)

EU RoHS Certificate of Compliance

Part Details

General

Status	Active
Category	PCB Headers and Receptacles
Series	172647
Description	Mini-Fit Jr. Header, Single Row, Vertical, 5 Circuits, Nylon, 94V-2, Matte Tin (Sn) Plating, Glow-Wire Capable, Black
Application	Power, Wire-to-Board
Component Type	PCB Header
Product Name	Mini-Fit Jr.
UPC	887191728988

Agency

CSA	LR19980
UL	E29179

Electrical

Current - Maximum per Contact	9.0A
Voltage - Maximum	600V AC (RMS)/DC

Physical

Breakaway	No
Circuits (Loaded)	5
Circuits (maximum)	5
Color - Resin	Black
Durability (mating cycles max)	30
First Mate / Last Break	No

Flammability	94V-2
Glow-Wire Capable	Yes
Guide to Mating Part	No
Keying to Mating Part	None
Lock to Mating Part	Yes
Material - Metal	Brass
Material - Plating Mating	Matte Tin
Material - Plating Termination	Matte Tin
Material - Resin	Nylon
Net Weight	1.391/g
Number of Rows	1
Orientation	Vertical
Packaging Type	Tray
PC Tail Length	3.50mm
PCB Locator	Yes
PCB Retention	Yes
PCB Thickness - Recommended	1.78mm
Pitch - Mating Interface	4.20mm
Pitch - Termination Interface	4.20mm
Plating min - Mating	2.540µm
Plating min - Termination	2.540µm
Polarized to Mating Part	Yes
Polarized to PCB	Yes
Shrouded	Fully
Stackable	No
Temperature Range - Operating	-40° to +80°C
Termination Interface Style	Through Hole

Solder Process Data

Max-Duration	5
Lead-Free Process Capability	WAVE
Max-Cycle	1
Max-Temp	220

Mates With / Use With

Mates with Part(s)

Description	Part Number
Mini-Fit Sigma Receptacle Housing, 4.20mm Pitch, Single Row, Glow-Wire Capable, 5 Circuits	<u>2004531005</u>
Mini-Fit Jr. Receptacle Housing, Single Row, PA Polyamide Nylon 6/6, UL94V-2, 5 Circuits, Positive Latch, Glow-Wire Capable, Black	<u>469940512</u>
Mini-Fit Jr. Single Row Receptacle Housings	<u>46994</u>