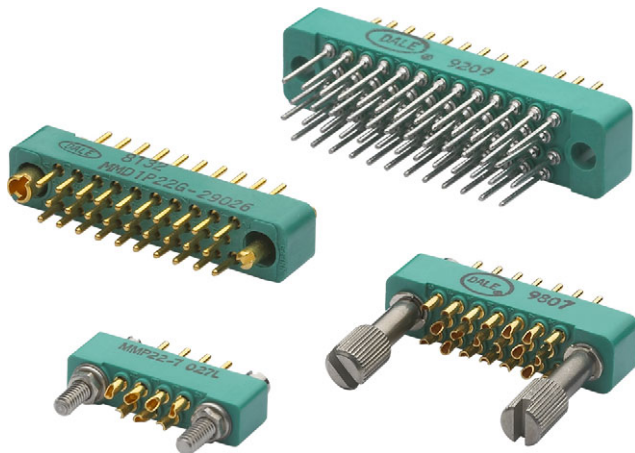




Rack and Panel Connectors Military, MIL-C-28748/7/8 Qualified and Commercial Microminiature Rectangular



FEATURES

- Qualified to MIL-C-28748/7/8
- Solder cup contacts
- Dip solder contacts
- Fixed and turnable screwlocks
- Optional closed entry socket contacts

APPLICATIONS

Especially suited for use in airborne, instrumentation, and portable equipment applications or wherever the following requirements must be met: minimum space and weight without sacrifice of performance, high quality materials, long service life, high vibration and shock resistance, and positive locking.

ELECTRICAL SPECIFICATIONS

Current rating: MM22 = 5 A, MM24 = 3 A

Breakdown voltage: at sea level: 2000 V_{RMS}
at 70 000 feet: 500 V_{RMS}

MATERIAL SPECIFICATIONS

Contact Pin: phosphor bronze

Contact Socket: phosphor bronze

Contact Plating: gold

Screwlocks: stainless steel, passivated

Guides: brass, gold plated or stainless steel, passivated

Standard Body: glass-filled diallyl phthalate per MIL-M-14, model SDG-F, green

DIMENSIONS in inches [millimeters]				
MMS With Solder Cup Contacts	MMP With Solder Cup Contacts	MMDS With Dip Solder Contacts	MMDP With Dip Solder Contacts	
CONTACT GAUGE	B DIAMETER	CONTACT GAUGE	C DIP TAIL LENGTH	D DIAMETER
22 AWG	0.030 ± 0.001 [0.762 ± 0.025]	22 AWG	0.160 [4.06] nom.	0.025 [0.635]
24 AWG	0.025 ± 0.001 [0.635 ± 0.025]	24 AWG	0.160 [4.06] nom.	0.025 [0.635]

DIMENSIONS in inches [millimeters]			
MMS With Fixed (026, 027) Guides	MMP With Fixed (026, 027) Guides	HARDWARE TYPE	E DIAMETER F DIAMETER
<p>0.230 [5.84] 2-56 UNC-2A thread typ. 0.110 [2.79] 0.034 [0.864] dia. solder cup #22 or #24 AWG max. 0.520 [13.21] 0.140 [3.56] 0.030 [0.762] wide x 0.040 [1.02] deep slot typ. F dia.</p>	<p>0.230 [5.84] 0.490 [12.45] 0.140 [3.56] "A" end of connector E dia.</p>	026	0.078 [1.98] 0.125 [3.17]
		026L	0.078 [1.98] 0.125 [3.17]
		027	0.078 [1.98] 0.125 [3.17]
		027L	0.078 [1.98] 0.125 [3.17]
<p>0.230 [5.84] 0.620 [15.75] 0.140 [3.56] 0.030 [0.762] typ. 0.034 [0.864] dia. solder cup #22 or #24 AWG max. 0.110 [2.79]</p>	<p>"A" end of connector 0.590 [14.99] 0.250 [6.35] 2-56 UNC-2A typ.</p>	<p>0.160 [4.06] 0.030 [0.762] wide x 0.040 [1.02] deep typ. 0.124 [3.15] dia. 0.540 [13.72] 0.140 [3.56] 0.500 [12.70] 0.110 [2.79]</p>	<p>0.950 [24.13] 0.046 [1.17] wide x 0.062 [1.57] deep typ. 0.187 [4.75] dia. 0.110 [2.79] 0.910 [23.11]</p>
<p>0.490 [12.45] 0.140 [3.56] 0.520 [13.21]</p>	<p>0.230 [5.84] 0.620 [15.75] 0.140 [3.56] 0.034 [0.864] dia. solder cup #22 or #24 AWG max. 0.250 [6.35] 0.590 [14.99] 0.110 [2.79]</p>	<p>0.590 [14.99] 0.620 [15.75]</p>	<p>0.240 [6.10] typ. 0.093 [2.36] hex socket 0.090 [2.29] deep typ. 0.180 [4.57] dia. 0.610 [15.49] 0.140 [3.56] 0.580 [14.73] 0.110 [2.79]</p>

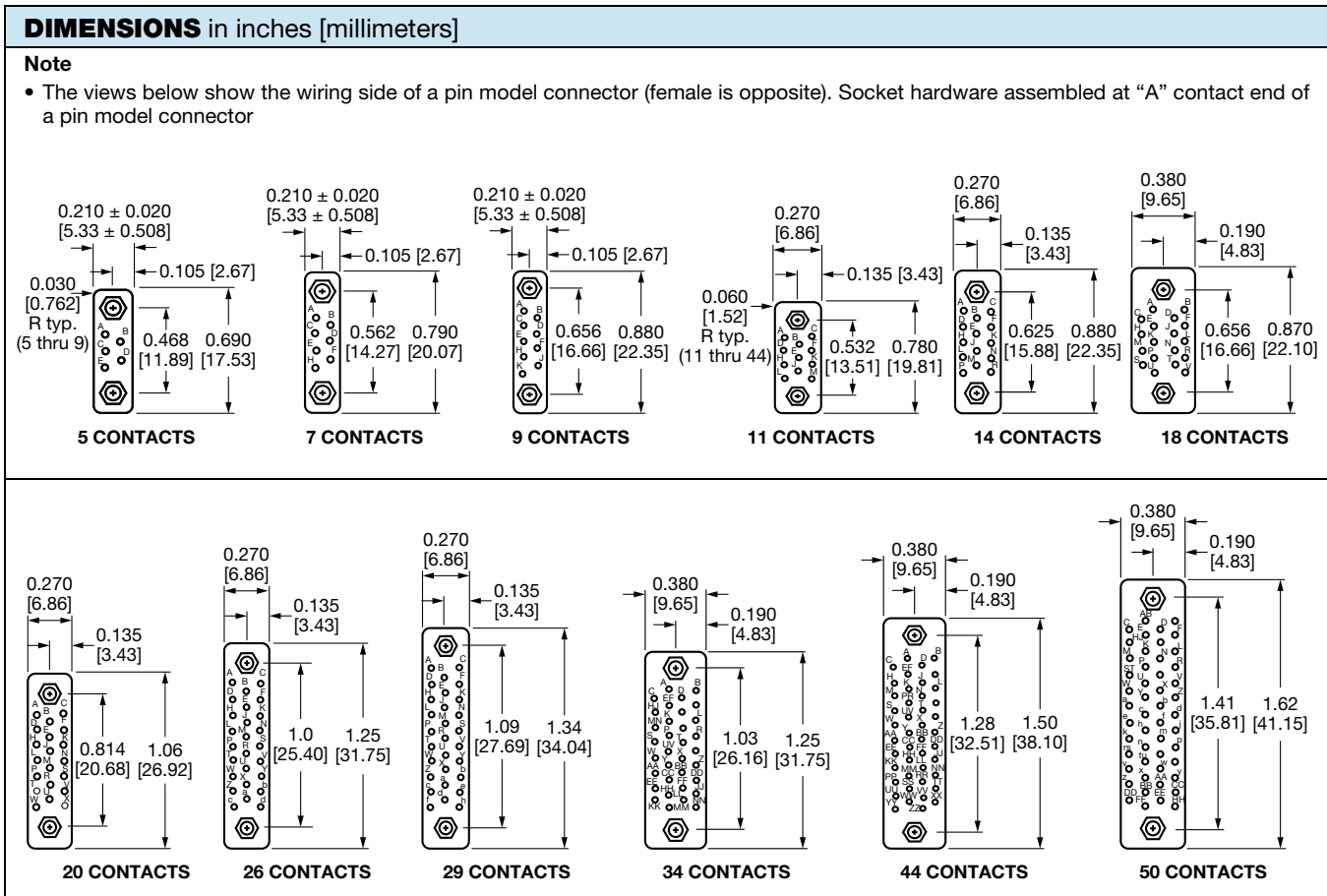
HARDWARE MATING CHART	
HARDWARE MODEL	MATES WITH HARDWARE MODEL
026	026, 026L
027	027, 027L
SK	SL, NSL or SLL
SK030	SL, NSL or SLL
SK2	SL2, NSL2 or SL2L
SK2030	SL2, NSL2 or SL2L
SK2035	SL2, NSL2 or SL2L

Note

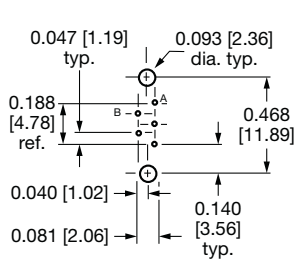
- Either MMP or MMS connectors may be ordered with any type of hardware shown

Examples

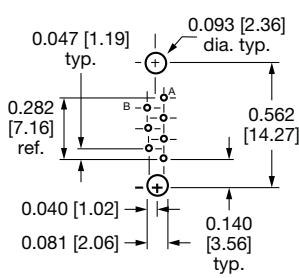
- MMP with 026 hardware would mate with an MMS with 026 hardware
- MMS with SK hardware would mate with an MMP with SL or NSL hardware
- MMS with SL2 hardware would mate with an MMP with SK2 or SK2030 hardware



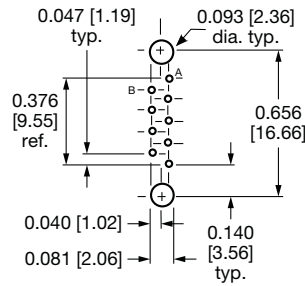
MOUNTING VARIATIONS in inches [millimeters]



5 CONTACTS

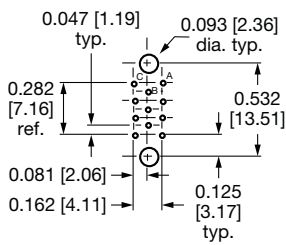


7 CONTACTS

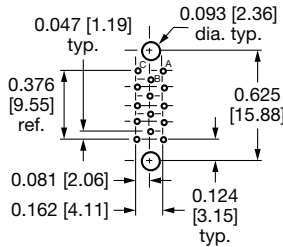


9 CONTACTS

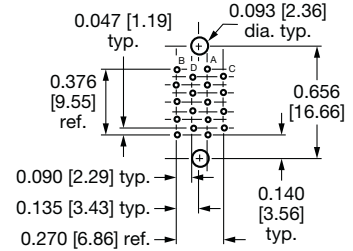
DIP SOLDER PC BOARD MOUNTING PATTERNS
 Male (MMP) connector shown - female is opposite.
 Contact, contact row and mating hole C₁ to C_L
 Dimensions also applies to solder cup style connectors.



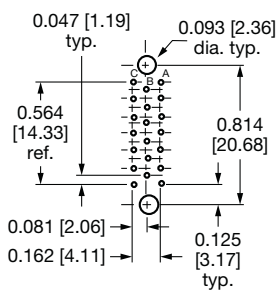
11 CONTACTS



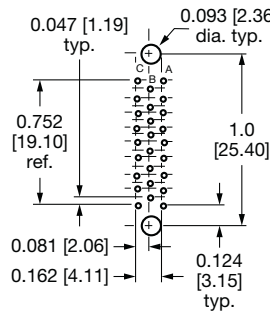
14 CONTACTS



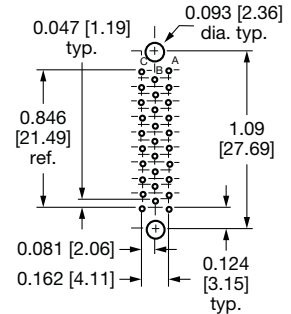
18 CONTACTS



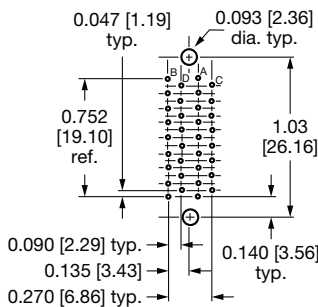
20 CONTACTS



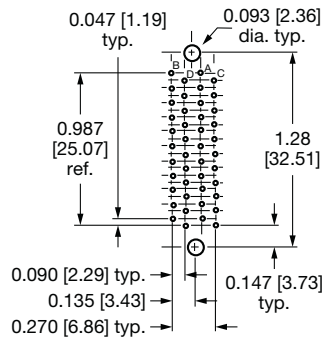
26 CONTACTS



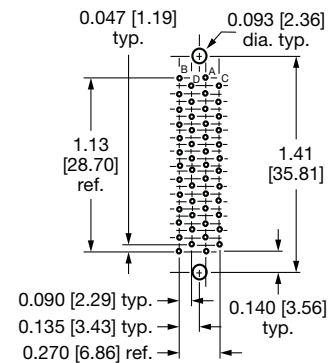
29 CONTACTS



34 CONTACTS



44 CONTACTS



50 CONTACTS

PANEL CUTOUT in inches [millimeters]								
	NUMBER OF CONTACTS	A	B	C	NUMBER OF CONTACTS	A	B	C
	5	0.210 [5.33]	0.468 [11.89]	0.340 [8.64]	20	0.270 [6.86]	0.814 [20.68]	0.690 [17.53]
	7	0.210 [5.33]	0.562 [14.27]	0.440 [11.18]	26	0.270 [6.86]	1.0 [25.40]	0.870 [22.10]
	9	0.210 [5.33]	0.656 [16.66]	0.530 [13.46]	29	0.270 [6.86]	1.09 [27.69]	0.970 [24.64]
	11	0.270 [6.86]	0.532 [13.51]	0.410 [10.41]	34	0.380 [9.65]	1.03 [26.16]	0.910 [23.11]
	14	0.270 [6.86]	0.625 [15.88]	0.500 [12.70]	44	0.380 [9.65]	1.28 [32.51]	1.16 [29.46]
	18	0.380 [9.65]	0.656 [16.66]	0.530 [13.46]	50	0.380 [9.65]	1.41 [35.81]	1.28 [32.51]

CONNECTOR					HARDWARE			
C	MM	D1	P	22	G	5	R	026 ⁽¹⁾
CONTACTS	MODEL	TERMINATION	CONTACT STYLE	CONTACT SIZE	PLATING	NUMBER OF CONTACTS	(OPTIONAL)	HARDWARE VARIATIONS
	Microminiature		P = pin S = socket	22 AWG = 0.030" [0.762 mm] diameter 24 AWG = 0.025" [0.635 mm] diameter			R = Reversed guides or screwlocks (Omit for standard)	
		(OPTIONAL) Dip solder termination optional. (Omit for standard solder cup) Select tail length: D1 = 0.160" [4.06 mm] nominal			Optional plating available: G = Gold (0.00003 thick) over Nickel G5 = Gold (0.00005 thick) over Nickel Omit designator for gold (0.00001 thick) over Nickel	5, 7, 9, 11, 14, 18, 20, 26, 29, 34, 44 or 50		
(OPTIONAL) Closed entry socket contacts optional on 22 AWG socket contacts only . (Omit for standard contacts)								(Omit if no hardware desired) 026 = slotted brass guides 0.078" [1.98 mm] diameter 026L = long slotted brass guides 0.078" [1.98 mm] diameter 027 = slotted cres guides 0.078" [1.98 mm] diameter 027L = long slotted cres guides 0.078" [1.98 mm] diameter SL = chassis mounted fixed screwlocks (3-48 thread) SL2 = chassis mounted fixed screwlocks (2-56 thread) SLL = chassis mounted fixed screwlocks long (3-48 thread) SL2L = chassis mounted fixed screwlocks long (2-56 thread) NSL = chassis mounted fixed screwlocks (3-48 thread) with nylon retaining nuts and fiber washers NSL2 = chassis mounted fixed screwlocks (3-48 thread) with nylon retaining nuts and fiber washers SK = cable mounted - turnable screwlocks (3-48 thread) SK2 = cable mounted - turnable screwlocks (2-56 thread) SK030 = cable mounted - turnable screwlocks (3-48 thread) with short knobs SK2030 = cable mounted - turnable screwlocks (2-56 thread) with short knobs SK2035 = cable mounted - tunable screwlocks (2-56 thread) with socket head knobs

Note

(1) To order complete connector with hardware supplied unassembled, add suffix "UA" on end of hardware designation



Disclaimer

ALL PRODUCT, PRODUCT SPECIFICATIONS AND DATA ARE SUBJECT TO CHANGE WITHOUT NOTICE TO IMPROVE RELIABILITY, FUNCTION OR DESIGN OR OTHERWISE.

Vishay Intertechnology, Inc., its affiliates, agents, and employees, and all persons acting on its or their behalf (collectively, "Vishay"), disclaim any and all liability for any errors, inaccuracies or incompleteness contained in any datasheet or in any other disclosure relating to any product.

Vishay makes no warranty, representation or guarantee regarding the suitability of the products for any particular purpose or the continuing production of any product. To the maximum extent permitted by applicable law, Vishay disclaims (i) any and all liability arising out of the application or use of any product, (ii) any and all liability, including without limitation special, consequential or incidental damages, and (iii) any and all implied warranties, including warranties of fitness for particular purpose, non-infringement and merchantability.

Statements regarding the suitability of products for certain types of applications are based on Vishay's knowledge of typical requirements that are often placed on Vishay products in generic applications. Such statements are not binding statements about the suitability of products for a particular application. It is the customer's responsibility to validate that a particular product with the properties described in the product specification is suitable for use in a particular application. Parameters provided in datasheets and / or specifications may vary in different applications and performance may vary over time. All operating parameters, including typical parameters, must be validated for each customer application by the customer's technical experts. Product specifications do not expand or otherwise modify Vishay's terms and conditions of purchase, including but not limited to the warranty expressed therein.

Hyperlinks included in this datasheet may direct users to third-party websites. These links are provided as a convenience and for informational purposes only. Inclusion of these hyperlinks does not constitute an endorsement or an approval by Vishay of any of the products, services or opinions of the corporation, organization or individual associated with the third-party website. Vishay disclaims any and all liability and bears no responsibility for the accuracy, legality or content of the third-party website or for that of subsequent links.

Vishay products are not designed for use in life-saving or life-sustaining applications or any application in which the failure of the Vishay product could result in personal injury or death unless specifically qualified in writing by Vishay. Customers using or selling Vishay products not expressly indicated for use in such applications do so at their own risk. Please contact authorized Vishay personnel to obtain written terms and conditions regarding products designed for such applications.

No license, express or implied, by estoppel or otherwise, to any intellectual property rights is granted by this document or by any conduct of Vishay. Product names and markings noted herein may be trademarks of their respective owners.