

5-534972-3 ✓ ACTIVE

AMPMODU | Modu Connector System

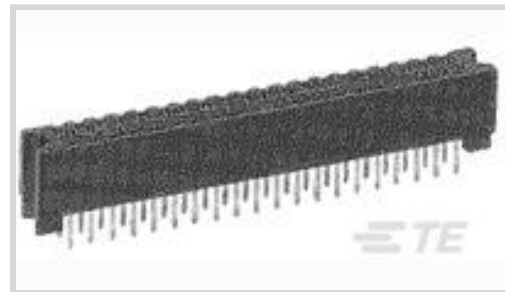
TE Internal #: 5-534972-3

PCB Mount Receptacle, Vertical, Board-to-Board, 50 Position, 2.54 mm [.1 in] Centerline, Gold, Through Hole - Solder, Signal, Modu Connector System

[View on TE.com >](#)



Connectors > PCB Connectors > PCB Headers & Receptacles



EU RoHS Compliance: **Compliant**

EU ELV Compliance: **Compliant**

PCB Connector Assembly Type: **PCB Mount Receptacle**

PCB Mount Orientation: **Vertical**

Connector System: **Board-to-Board**

Features

Dimensions

	.238 in
Row-to-Row Spacing	2.54 mm [.1 in]
Stack Height	11.43 mm [.45 in]
PCB Thickness (Recommended)	1.4 mm [.055 in]

Contact Features

	50 μ m
Contact Mating Area Plating Material Thickness	.762 μ m [30 μ m]
Mating Square Post Dimension	.64 mm [.025 in]
Contact Layout	Inline
Contact Base Material	Phosphor Bronze
PCB Contact Termination Area Plating Material	Tin
Contact Mating Area Plating Material	Gold
Contact Type	Socket
Contact Current Rating (Max)	3 A

Other

EU RoHS Compliance	Compliant
EU ELV Compliance	Compliant

Product Type Features



PCB Connector Assembly Type	PCB Mount Receptacle
Connector System	Board-to-Board
Sealable	No
Connector & Contact Terminates To	Printed Circuit Board

Configuration Features

Board-to-Board Configuration	Parallel
Stackable	Yes
PCB Mount Orientation	Vertical
Number of Positions	50
Number of Rows	2

Electrical Characteristics

Operating Voltage	250 VAC
Termination Resistance	12 mΩ
Insulation Resistance	5000 MΩ
Dielectric Withstanding Voltage (Max)	750 VAC

Body Features

Primary Product Color	Black
-----------------------	-------

Termination Features

Rectangular Termination Post & Tail Width	.69 mm[.027 in]
Rectangular Termination Post & Tail Thickness	.2 mm[.008 in]
Termination Post & Tail Length	2.92 mm[.115 in]
Termination Method to PCB	Through Hole - Solder

Mechanical Attachment

Mating Retention	Without
Mating Alignment Type	Guide Pin Slots
PCB Mount Retention	Without
PCB Mount Alignment	Without
Connector Mounting Type	Board Mount
Mating Alignment	With

Housing Features

Mating Entry Location	Bottom & Top
Housing Material	Philips Ryton



Centerline (Pitch)	2.54 mm [.1 in]
--------------------	-----------------

Usage Conditions

Housing Temperature Rating	High
Operating Temperature Range	-65 – 105 °C [-85 – 221 °F]

Operation/Application

Solder Process Feature	Board Standoff
Circuit Application	Signal

Industry Standards

Compatible With Approved Standards Products	UL E28476, CSA LE7189
UL Flammability Rating	UL 94V-0

Packaging Features

Packaging Method	Tube
------------------	------

Product Compliance

[For compliance documentation, visit the product page on TE.com>](#)

EU RoHS Directive 2011/65/EU	Compliant
EU ELV Directive 2000/53/EC	Compliant
China RoHS 2 Directive MIIT Order No 32, 2016	No Restricted Materials Above Threshold
EU REACH Regulation (EC) No. 1907/2006	Current ECHA Candidate List: JUNE 2024 (241) Candidate List Declared Against: JAN 2021 (211) Does not contain REACH SVHC
Halogen Content	Not Yet Reviewed for halogen content
Solder Process Capability	Pin-in-Paste capable to 260°C

Product Compliance Disclaimer

This information is provided based on reasonable inquiry of our suppliers and represents our current actual knowledge based on the information they provided. This information is subject to change. The part numbers that TE has identified as EU RoHS compliant have a maximum concentration of 0.1% by weight in homogenous materials for lead, hexavalent chromium, mercury, PBB, PBDE, DBP, BBP, DEHP, DIBP, and 0.01% for cadmium, or qualify for an exemption to these limits as defined in the Annexes of Directive 2011/65/EU (RoHS2). Finished electrical and electronic equipment products will be CE marked as required by Directive 2011/65/EU. Components may not be CE marked. Additionally, the part numbers that TE has identified as EU ELV compliant have a maximum concentration of 0.1% by weight in homogenous materials for lead, hexavalent chromium, and mercury, and 0.01% for cadmium, or qualify for an exemption to these limits as defined in the Annexes of Directive 2000/53/EC (ELV). Regarding the REACH Regulation, the information TE provides on SVHC in articles for this part number is based on the latest European Chemicals Agency (ECHA) 'Guidance on requirements for substances in articles' posted at this URL: <https://echa.europa.eu/guidance-documents/guidance-on-reach>



Compatible Parts



TE Part # 5-102692-4
50 MODII 2PC HDR DR SHRD, ROHS

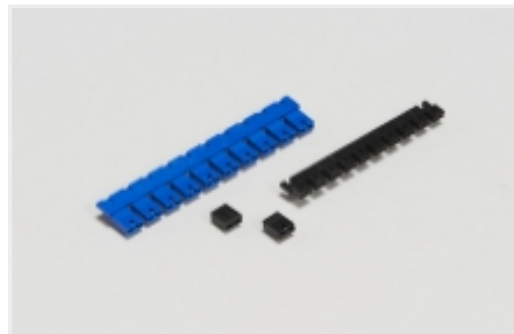


TE Part # 5-534978-8
50 MODII 2PC HDR DR W/HLDWN, ROHS

Also in the Series | Modu Connector System



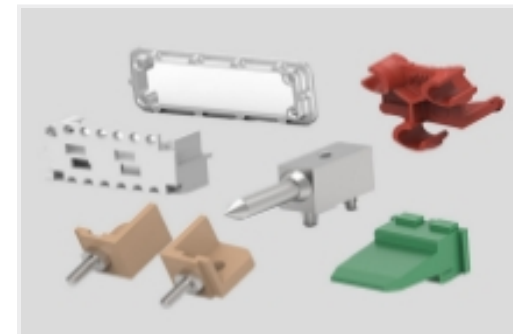
Automotive Connector Caps & Covers (1)



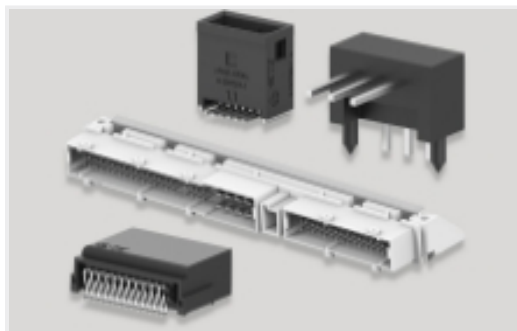
Board-to-Board Jumpers & Shunts(5)



Connector Caps & Covers(1)



Connector Hardware(4)



PCB Headers & Receptacles(814)

Customers Also Bought



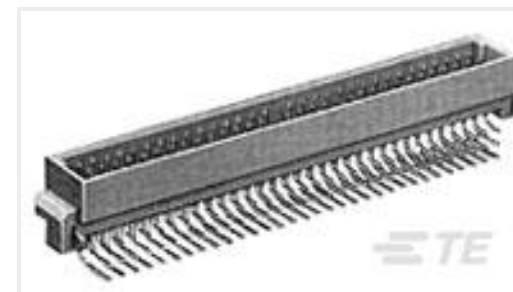
TE Part #5650479-5
ASSY,PIN,EUROCARD,TYPE R/2,LEAD-FREE,48



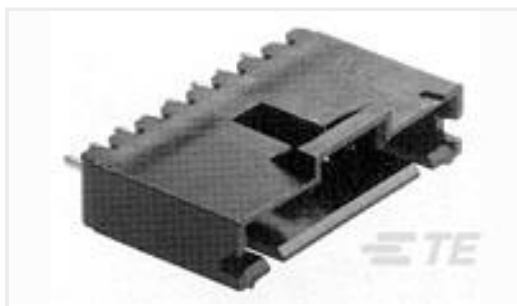
TE Part #5650908-5
ASSY,PIN,EUROCARD,TYPE R,LEAD-FREE,48



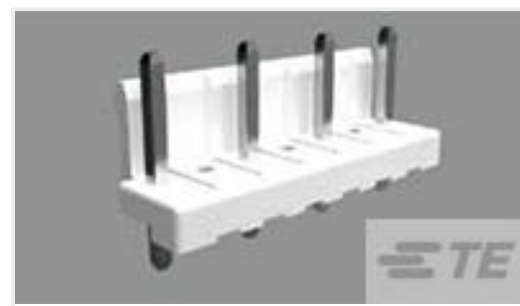
TE Part #5-794630-4
24P MICRO MNL ASSY,VRT,HDR,LF



TE Part #5650478-5
ASSY,PIN,EUROCARD,TYPE C/2,LEA



TE Part #5-104362-7
08 MTE HDR SRST LATCH W/HLDWN



TE Part #1-1123724-4
3.96EP HDR ASSY 4(7)P NATURAL



TE Part #1-1437653-3
6PCV-08-006=6PCV ASSEMBLY



TE Part #2-644486-4
04P MTA100 SHRDED HDR ASSY SN



TE Part #1393277-6
V23076A1001D143

Documents

Product Drawings

50 MODII VRT 2PC DR CE 100CL, RoHS

English

CAD Files

3D PDF

3D

Customer View Model

[ENG_CVM_5-534972-3_P1.3d_igs.zip](#)

English

Customer View Model

[ENG_CVM_5-534972-3_P1.3d_stp.zip](#)

English

Customer View Model

[ENG_CVM_5-534972-3_P1.2d_dxf.zip](#)

English

3D PDF

English

By downloading the CAD file I accept and agree to the [Terms and Conditions](#) of use.

Datasheets & Catalog Pages

[AMPMODU_INTERCONNECTION_SYSTEM_SECTION5_CONT](#)

English