

213900-2 ✓ ACTIVE

AMP | AMP CPC

TE Internal #: 213900-2

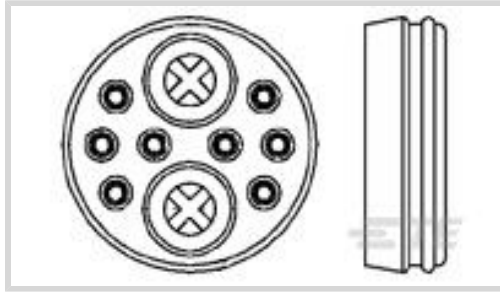
Wire Entry Seal Kit, 10 Position, -55 – 105 °C [-67 – 221 °F]

Operating Temperature, AMP CPC

[View on TE.com >](#)



Connectors > Connector Accessories > Connector Seals & Cavity Plugs



Connector Seal & Plug Type: **Wire Entry Seal Kit**

Operating Temperature (Max): **105 °C [221 °F]**

Number of Positions: **10**

Operating Temperature Range: **-55 – 105 °C [-67 – 221 °F]**

EU RoHS Compliance: **Compliant**

Features

Product Type Features

Connector Seal & Plug Type	Wire Entry Seal Kit
----------------------------	---------------------

Usage Conditions

Operating Temperature (Max)	105 °C[221 °F]
Operating Temperature Range	-55 – 105 °C[-67 – 221 °F]

Configuration Features

Number of Positions	10
---------------------	----

Other

EU RoHS Compliance	Compliant
EU ELV Compliance	Compliant

Mechanical Attachment

Thread Size	15/16-20
-------------	----------

Packaging Features

Packaging Method	Loose Piece
Packaging Quantity	1

Product Compliance

[For compliance documentation, visit the product page on TE.com>](#)

EU RoHS Directive 2011/65/EU	Compliant
------------------------------	-----------



EU ELV Directive 2000/53/EC	Compliant
China RoHS 2 Directive MIIT Order No 32, 2016	No Restricted Materials Above Threshold
EU REACH Regulation (EC) No. 1907/2006	Current ECHA Candidate List: JUNE 2024 (241) Candidate List Declared Against: JUNE 2024 (241) Does not contain REACH SVHC
Halogen Content	BFR/CFR/PVC Free, but Br/Cl >900 ppm in other sources.
Solder Process Capability	Not applicable for solder process capability

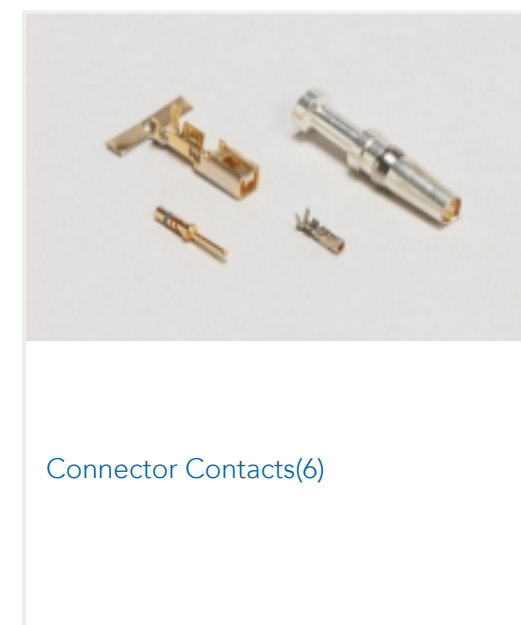
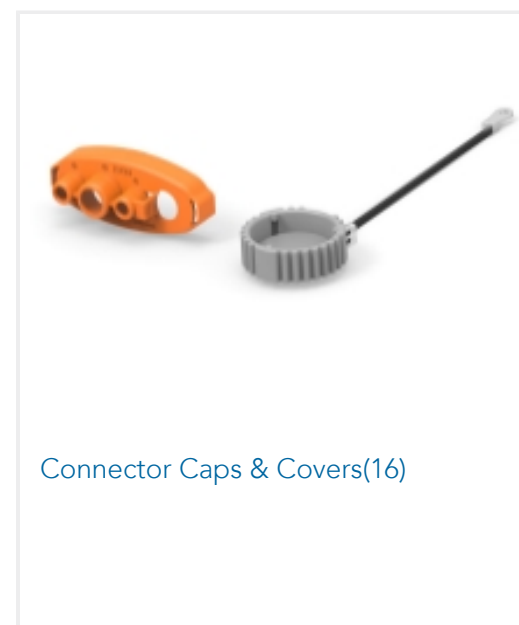
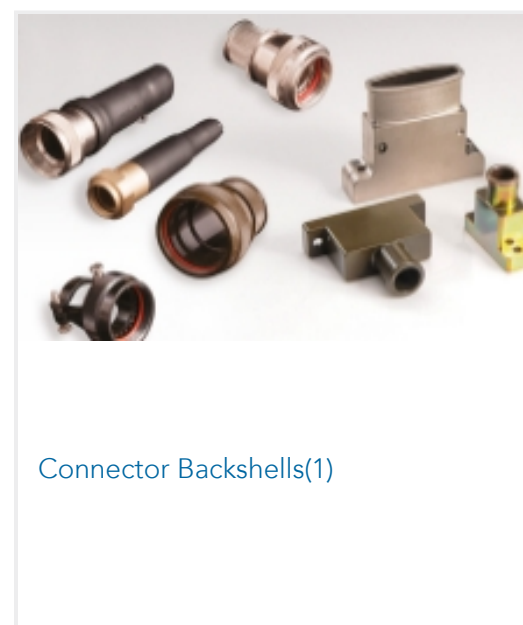
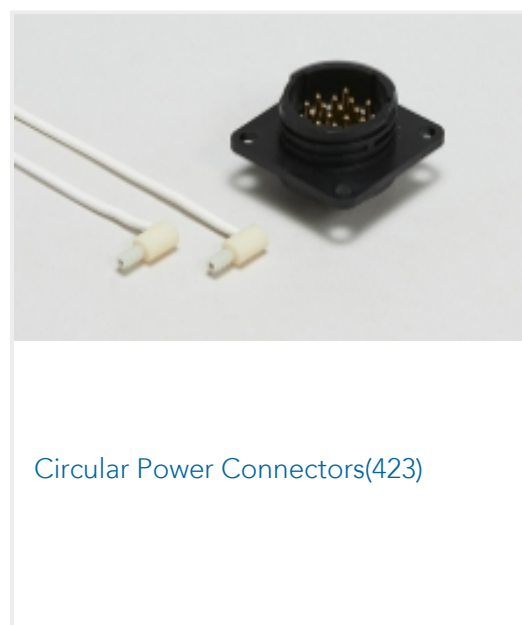
Product Compliance Disclaimer

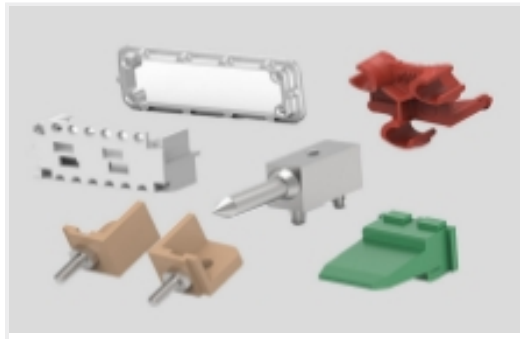
This information is provided based on reasonable inquiry of our suppliers and represents our current actual knowledge based on the information they provided. This information is subject to change. The part numbers that TE has identified as EU RoHS compliant have a maximum concentration of 0.1% by weight in homogenous materials for lead, hexavalent chromium, mercury, PBB, PBDE, DBP, BBP, DEHP, DIBP, and 0.01% for cadmium, or qualify for an exemption to these limits as defined in the Annexes of Directive 2011/65/EU (RoHS2). Finished electrical and electronic equipment products will be CE marked as required by Directive 2011/65/EU. Components may not be CE marked. Additionally, the part numbers that TE has identified as EU ELV compliant have a maximum concentration of 0.1% by weight in homogenous materials for lead, hexavalent chromium, and mercury, and 0.01% for cadmium, or qualify for an exemption to these limits as defined in the Annexes of Directive 2000/53/EC (ELV). Regarding the REACH Regulation, the information TE provides on SVHC in articles for this part number is based on the latest European Chemicals Agency (ECHA) 'Guidance on requirements for substances in articles' posted at this URL: <https://echa.europa.eu/guidance-documents/guidance-on-reach>

Compatible Parts



Also in the Series | AMP CPC





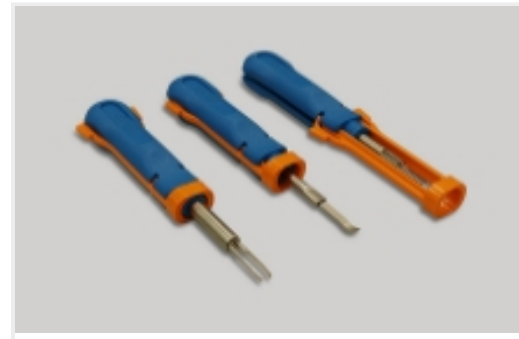
Connector Hardware(12)



Connector Seals & Cavity Plugs(35)



Connector Strain Relief(60)



Insertion & Extraction Tools(1)



Sealing Sleeves(2)

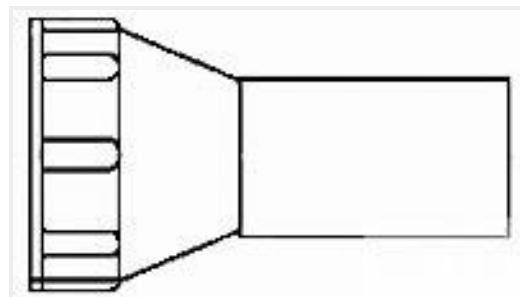
Customers Also Bought



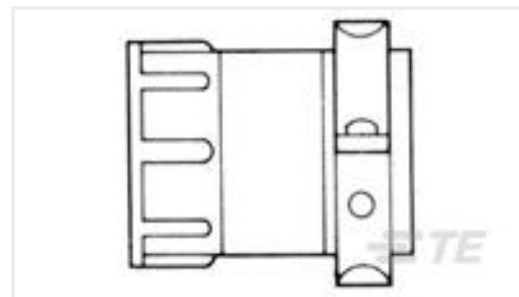
TE Part #54011-1
CPC STRAIN RELIEF, SIZE 17



TE Part #206043-3
17-14 CPC REC FREE HANGING



TE Part #213933-1
CPC, STRAIN RELIEF, SIZE 17



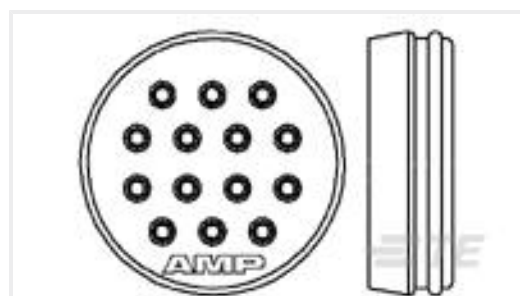
TE Part #1-206322-0
CABLE CLAMP KIT, BULK PKG



TE Part #2-66104-3
III+ SKT, 24-20, 30AU/FL, STRIP



TE Part #2-66102-2
III+ PIN, 24-20, 30AU/FL, STRIP



TE Part #213919-1
CPC SEAL KIT, UNASSM, SZ 17-14



TE Part #054955-000
CWT-9001



TE Part #691091-000
CWT-9004



TE Part #2-66105-0
III+ SKT, 24-20, TIN, SMPACK

Documents



Product Drawings

[CPC SEAL ASSY KIT,SRS 6,17-10](#)

English

CAD Files

[3D PDF](#)

English

Customer View Model

[ENG_CVM_213900-2_C.2d_dxf.zip](#)

English

Customer View Model

[ENG_CVM_213900-2_C.3d_igs.zip](#)

English

Customer View Model

[ENG_CVM_213900-2_C.3d_stp.zip](#)

English

[3D PDF](#)

3D

Customer View Model

[ENG_CVM_CVM_213900-2_B.2d_dxf.zip](#)

English

Customer View Model

[ENG_CVM_CVM_213900-2_B.3d_igs.zip](#)

English

Customer View Model

[ENG_CVM_CVM_213900-2_B.3d_stp.zip](#)

English

By downloading the CAD file I accept and agree to the [Terms and Conditions](#) of use.

Product Specifications

[Product Specification](#)

English

Agency Approvals

[CSA Certificate](#)

English

[CSA Certificate](#)

English