

62652-1 ✓ ACTIVE

MAG-MATE | MAG-MATE 300

TE Internal #: 62652-1

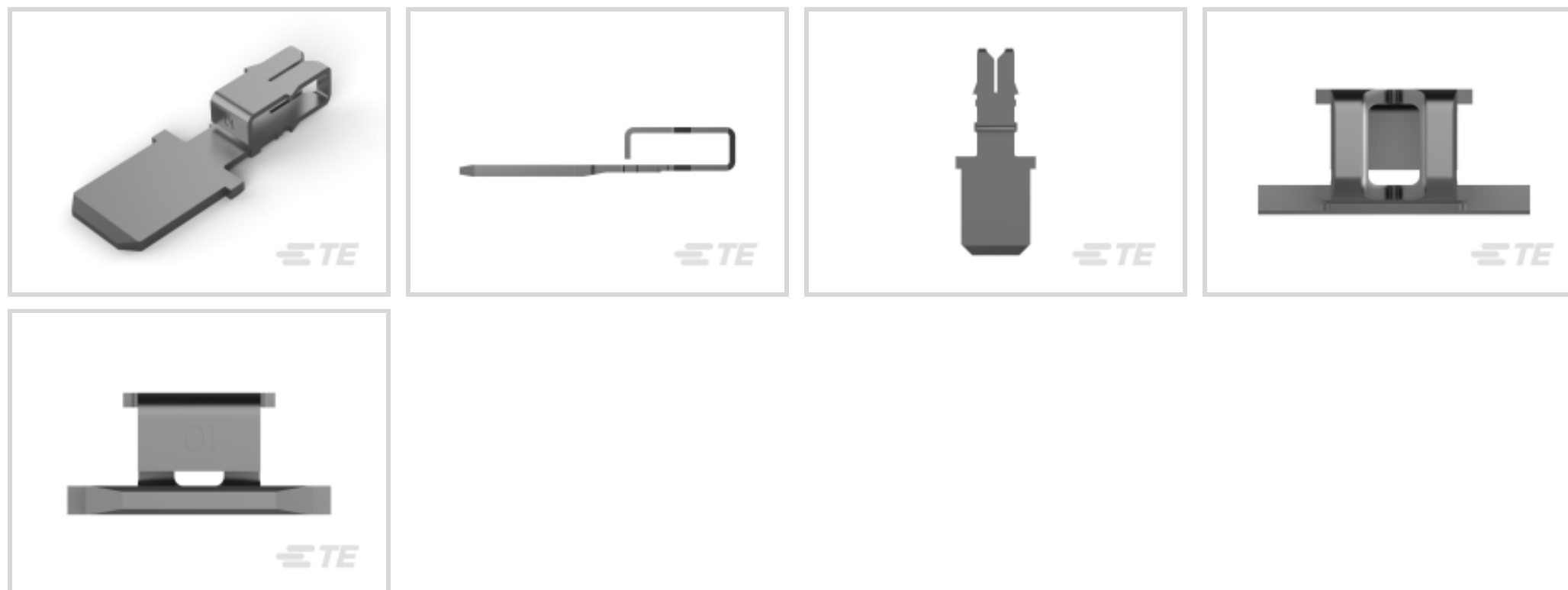
Tab, Mating Tab Width 6.35 mm [.25 in], Size 2, .36 – .57 mm

Magnet Wire, 27 – 23 AWG Magnet Wire, MAG-MATE 300, Magnet Wire Terminals

[View on TE.com >](#)



Terminals & Splices > Magnet Wire Terminals



Magnet Wire Terminal Type: **Tab**

Mating Tab Width: **6.35 mm [.25 in]**

Mating Tab Thickness: **.8 mm [.033 in]**

Compatible With Cavity Size: **Size 2**

Magnet Wire Size: **27 – 23 AWG**

## Features

### Contact Features

Magnet Wire Terminal Type	Tab
Mating Tab Width	6.35 mm [.25 in]
Mating Tab Thickness	.8 mm [.033 in]
Terminal Plating Material	Tin
Terminal Orientation	Straight

### Body Features

Compatible With Cavity Size	Size 2
-----------------------------	--------

### Dimensions

Magnet Wire Size	.36 – .57 mm
Stock Thickness (Magnet Wire Side)	.41 mm [.016 in]
Product Length	18.97 mm [.746 in]
Terminal Height	7.62 mm [.3 in]

### Termination Features

Termination Method to Wire & Cable	Insulation Displacement (IDC)
------------------------------------	-------------------------------



### Mechanical Attachment

Mating Retention Type	Dimple
-----------------------	--------

### Packaging Features

Packaging Method	Reel, Reel/Carton
Packaging Quantity	7500

### Operation/Application

Compatible With Wire Base Material	Aluminum, Copper
------------------------------------	------------------

### Product Type Features

Compatible With Discrete Wire Type	Solid, Magnet Wire
------------------------------------	--------------------

### Usage Conditions

Operating Temperature Range	-65 – 150 °C[-85 – 302 °F]
Insulation Option	Uninsulated

### Other

EU RoHS Compliance	Compliant
EU ELV Compliance	Compliant

### Identification Marking

Identification Number	10
-----------------------	----

### Industry Standards

Compatible With Agency/Standards Products	RU (UL Component Program)
---	---------------------------

### Product Compliance

[For compliance documentation, visit the product page on TE.com>](#)

EU RoHS Directive 2011/65/EU	Compliant
EU ELV Directive 2000/53/EC	Compliant
China RoHS 2 Directive MIIT Order No 32, 2016	No Restricted Materials Above Threshold
EU REACH Regulation (EC) No. 1907/2006	Current ECHA Candidate List: JUNE 2024 (241) Candidate List Declared Against: JUNE 2024 (241) Does not contain REACH SVHC
Halogen Content	Low Halogen - Br, Cl, F, I < 900 ppm per homogenous material. Also BFR/CFR/PVC Free

## Solder Process Capability

Not applicable for solder process capability

## Product Compliance Disclaimer

This information is provided based on reasonable inquiry of our suppliers and represents our current actual knowledge based on the information they provided. This information is subject to change. The part numbers that TE has identified as EU RoHS compliant have a maximum concentration of 0.1% by weight in homogenous materials for lead, hexavalent chromium, mercury, PBB, PBDE, DBP, BBP, DEHP, DIBP, and 0.01% for cadmium, or qualify for an exemption to these limits as defined in the Annexes of Directive 2011/65/EU (RoHS2). Finished electrical and electronic equipment products will be CE marked as required by Directive 2011/65/EU. Components may not be CE marked. Additionally, the part numbers that TE has identified as EU ELV compliant have a maximum concentration of 0.1% by weight in homogenous materials for lead, hexavalent chromium, and mercury, and 0.01% for cadmium, or qualify for an exemption to these limits as defined in the Annexes of Directive 2000/53/EC (ELV). Regarding the REACH Regulation, the information TE provides on SVHC in articles for this part number is based on the latest European Chemicals Agency (ECHA) 'Guidance on requirements for substances in articles' posted at this URL: <https://echa.europa.eu/guidance-documents/guidance-on-reach>

## Compatible Parts

Also in the Series | **MAG-MATE 300**

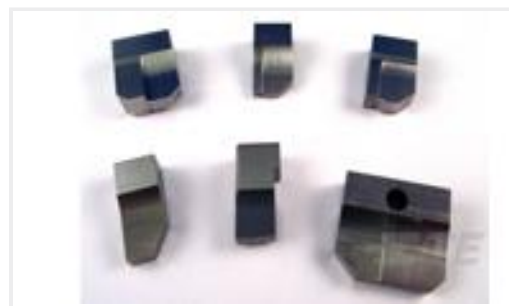
## Customers Also Bought



TE Part #63200-1  
MAG-MATE 250F TAB TPBR



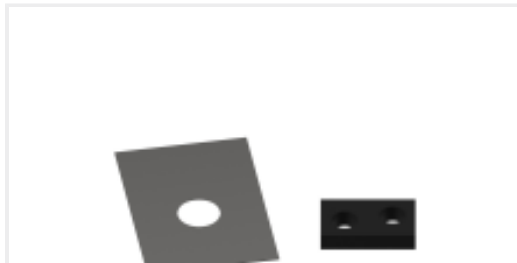
TE Part #2382635-1  
LUMAWISE POWER INPUT TERMINAL  
BLOCK (TB)



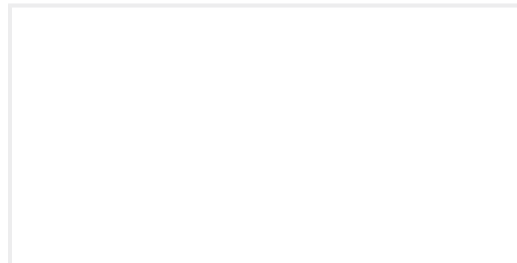
TE Part #455714-2  
ANVIL



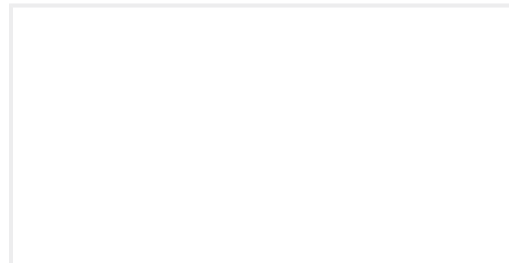
TE Part #690569-2  
FRONT SHEAR PLATE



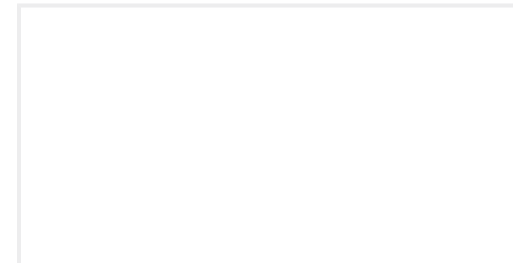
TE Part #690517-1  
SPACER-ADJ PLATE



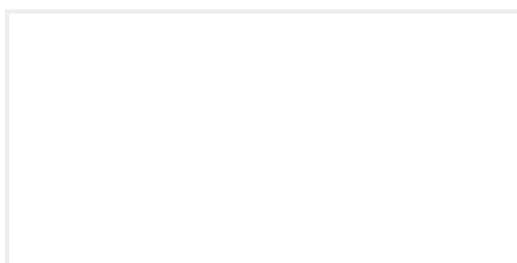
TE Part #690603-1  
SPRING ASSIST



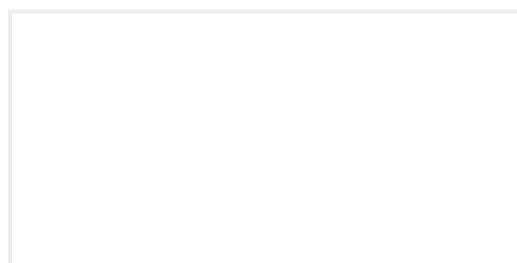
TE Part #690170-1  
SPRING-COMPRESSION



TE Part #23241-6  
BALL, STEEL



TE Part #1803409-2  
BLOCK, CRIMPER SPACER



TE Part #690602-6  
CAM TERM FEED

## Documents

### Product Drawings

[MAG-MATE 250FTAB 27-23 016TPBR](#)

English

### CAD Files

[3D PDF](#)

3D

Customer View Model

[ENG\\_CVM\\_CVM\\_62652-1\\_AK.2d\\_dxf.zip](#)

English

Customer View Model

[ENG\\_CVM\\_CVM\\_62652-1\\_AK.3d\\_igs.zip](#)

English

Customer View Model

[ENG\\_CVM\\_CVM\\_62652-1\\_AK.3d\\_stp.zip](#)

English

By downloading the CAD file I accept and agree to the [Terms and Conditions](#) of use.

### Datasheets & Catalog Pages



## Magnet Wire Terminals & Splices

English

---

## Product Specifications

### Application Specification

English

---

## Agency Approvals

### UL Report

English