



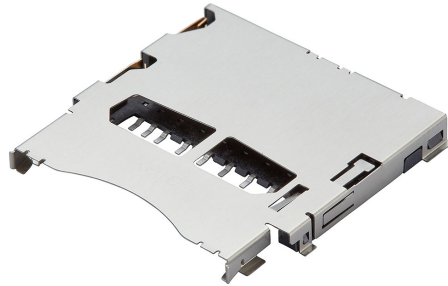
Part Number : [5035000993](#)

Product Description : 2.50mm Pitch SD Memory Card Connector, 2.95mm Height, Normal Mount, Push-Push, with Detect, Protect and Anti-Card-Fly-Out Features

Series Number : 503500

Status : Active

Product Category : Memory / SIM Card Connectors



Documents & Resources

Drawings

[5035000993_sd.pdf](#)

3D Models and Design Files

[5035000993.dxf](#)

[5035000993.pdf](#)

[5035000993_stp.zip](#)

Specifications

[SPK-502250-001-001.pdf](#)

[5035009200-SPK-200.pdf](#)

[5035000000-010.pdf](#)

Product Environment Compliance

Compliance

GADSL/IMDS	Not Relevant
China RoHS	
EU ELV	Not Relevant
Low-Halogen Status	Low-Halogen per IEC 61249-2-21
REACH SVHC	Not Contained per D(2024)6225-DC (07 Nov 2024)
EU RoHS	Compliant per EU 2015/863

Multiple Part Product Compliance Statements

- Eu RoHS
- REACH SVHC
- Low-Halogen

Multiple Part Industry Compliance Documents

- IPC 1752A Class C
- IPC 1752A Class D
- Molex Product Compliance Declaration
- IEC-62474
- chemSHERPA (xml)

EU RoHS Certificate of Compliance

Part Details

General

Status	Active
Category	Memory / SIM Card Connectors
Series	503500
Description	2.50mm Pitch SD Memory Card Connector, 2.95mm Height, Normal Mount, Push-Push, with Detect, Protect and Anti-Card-Fly-Out Features
Product Name	SD Card
Style	Push-Push
UPC	191128387170

Electrical

Current - Maximum per Contact	0.5A
Shielded	Yes
Voltage - Maximum	50V AC (RMS)/DC

Physical

Card Detection Switch	Open
Card Entry Location	Front
Circuits (Loaded)	9
Durability (mating cycles max)	10000
Ejector Button Side	N/A
Material - Contact	Copper Alloy
Material - Plating Mating	Gold
Material - Plating Termination	Tin
Material - Shell	Stainless Steel

Net Weight	1547.202/mg
Packaging Type	Embossed Tape on Reel
PCB Locator	No
PCB Retention	Yes
Pitch - Mating Interface	2.50mm
Temperature Range - Operating	-25° to +85°C
Termination Interface Style	Surface Mount

Use with Part(s)

Description	Part Number
Use With	SD Card