



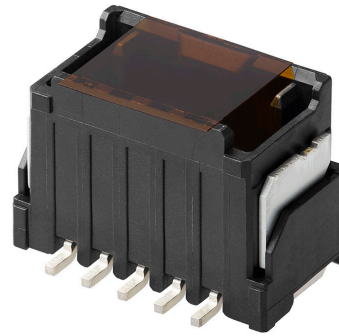
Part Number : [2170630087](#)

Product Description : Micro-One Wire-to-Board Header, Vertical, 2.00mm Pitch, Single Row, Glow-Wire Capable, Surface Mount, 8 Circuits, Tin-Bismuth Plating, Black, with Potting Capability, with Cover Tape

Series Number : 217063

Status : Active

Product Category : PCB Headers and Receptacles



Documents & Resources

Drawings

[2170630087_sd.pdf](#)

3D Models and Design Files

[2170630087.dxf](#)

[2170630087.pdf](#)

[2170630087_stp.zip](#)

Specifications


[2059790000-AS-000.pdf](#)

[2170639200-SPK-200.pdf](#)

[2059790000-PS-000.pdf](#)

Product Environment Compliance

Compliance

GADSL/IMDS	Compliant with Exemption 33; 44
China RoHS	
EU ELV	Not Relevant
Low-Halogen Status	Not Low-Halogen per IEC 61249-2-21
REACH SVHC	Not Contained per D(2024)6225-DC (07 Nov 2024)
EU RoHS	Compliant per EU 2015/863

Multiple Part Product Compliance Statements

- Eu RoHS

- REACH SVHC

- Low-Halogen

Multiple Part Industry Compliance Documents

- IPC 1752A Class C

- IPC 1752A Class D

- Molex Product Compliance Declaration

- IEC-62474

- chemSHERPA (xml)

EU RoHS Certificate of Compliance

Part Details

General

Status	Active
Category	PCB Headers and Receptacles
Series	217063
Description	Micro-One Wire-to-Board Header, Vertical, 2.00mm Pitch, Single Row, Glow-Wire Capable, Surface Mount, 8 Circuits, Tin-Bismuth Plating, Black, with Potting Capability, with Cover Tape
Application	Signal, Wire-to-Board
Component Type	PCB Header
Product Name	Micro-One
UPC	195842005242

Agency

UL	E29179
----	--------

Electrical

Current - Maximum per Contact	4.0A
Voltage - Maximum	250V AC (RMS)/DC

Physical

Breakaway	No
Circuits (Loaded)	8
Circuits (maximum)	8

Color - Resin	Black
Durability (mating cycles max)	30
First Mate / Last Break	No
Flammability	94V-0
Glow-Wire Capable	Yes
Lock to Mating Part	Yes
Material - Metal	Brass
Material - Plating Mating	Tin-Bismuth
Material - Resin	Polyamide
Net Weight	1316.286/mg
Number of Rows	1
Orientation	Vertical
Packaging Type	Embossed Tape on Reel
PCB Retention	Yes
Pitch - Mating Interface	2.00mm
Polarized to PCB	Yes
Shrouded	Fully
Temperature Range - Operating	-40° to +105°C
Termination Interface Style	Surface Mount

Mates With / Use With

Mates with Part(s)

Description	Part Number
Micro-One Wire-to-Board Receptacle Housings	<u>205979</u>
Micro-One Single Row Receptacle Housings	<u>212724</u>