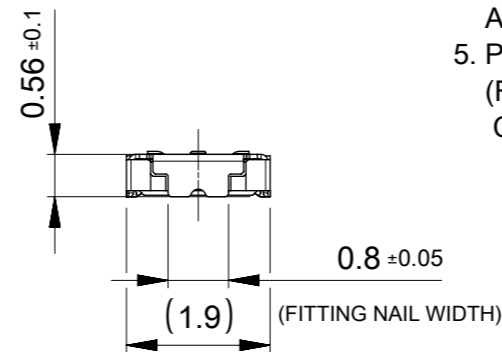


**MATING CONDITION**

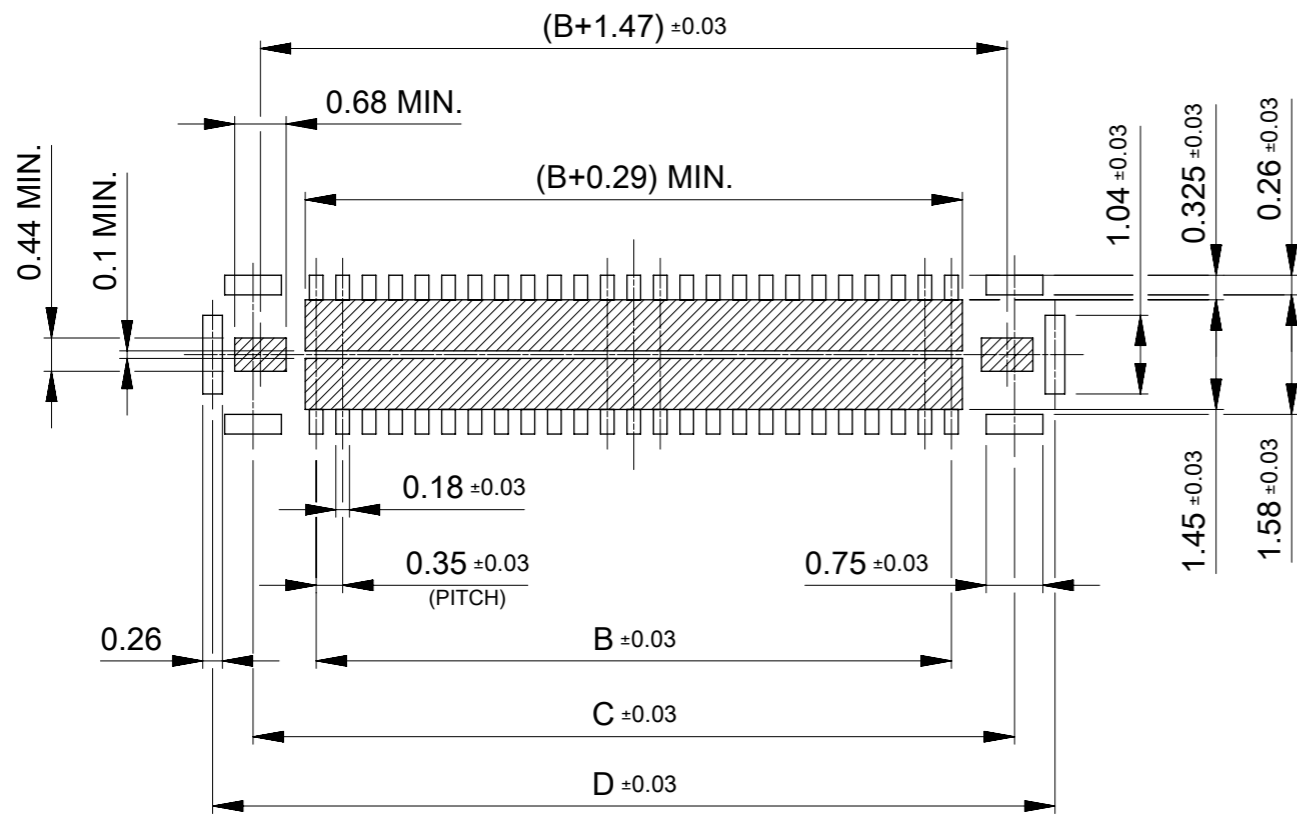
**NOTES**

- 1. MATERIAL**  
 HOUSING : LIQUID CRYSTAL POLIMER UL94V-0 (COLOR : BLACK)  
 TERMINAL : COPPER ALLOY  
 FITTING NAIL : COPPER ALLOY
- 2. PLATING**  
 TERMINAL :  
 CONTACT AREA : SEPERATED GOLD PLATING(0.1µm MINIMUM)  
 SOLDER TAIL AREA : SEPERATED GOLD PLATING(0.05µm MINIMUM)  
 UNDER PLATING : NICKEL OVERALL(1.0µm MINIMUM)  
 \* DIVIED INTO PARTS THE GOLD PLATING OF THE CONTACT AND THE TAIL PART BY THE NICKEL PLATING.  
  
 FITTING NAIL :  
 CONTACT AREA : SEPERATED GOLD PLATING(0.1µm MINIMUM)  
 SOLDER TAIL AREA : SEPERATED GOLD PLATING(0.05µm MINIMUM)  
 UNDER PLATING : NICKEL OVERALL(1.0µm MINIMUM)  
 \* DIVIED INTO PARTS THE GOLD PLATING OF THE CONTACT AND THE TAIL PART BY THE NICKEL PLATING.
- 3. MATE WITH : 2167010\*\*\***
- 4. TAIL AND FITTING NAIL COPLANARITY TO BE 0.08 MAXIMUM. BEFORE REFLOW AND 0.1MAXIMUM AFTER REFLOW.**
- 5. PROHIBITED AREA OF PATTERN WIRING AND SOLDER.**  
 (FOR EACH AREA, THE WIRING THAT TOUCHES ON THE SOLDER CAN BE ATTACHED, THEN COVERED WITH A FILM TO KEEP SOLDER OUT)




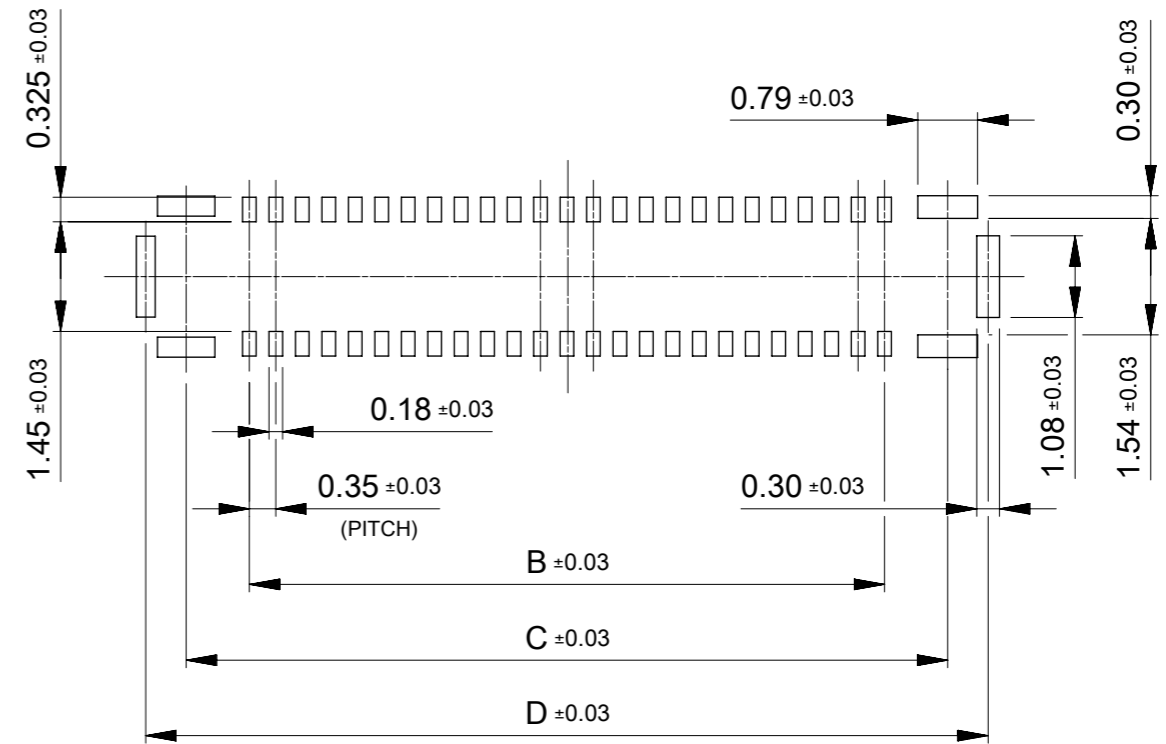
|  |       |      |      |                       |                    |                         |      |
|--|-------|------|------|-----------------------|--------------------|-------------------------|------|
| 11.14                                    | 10.07 | 8.4  | 11.2 | 2167000509            | O                  | ---                     | 50   |
| 9.39                                     | 8.32  | 6.65 | 9.45 | 2167000409            | O                  | ---                     | 40   |
| D  | C     | B    | A    | EMBOSSED TAPE PACKAGE | HIGH VOL. TOOL     | LOW VOL. TOOL           | Ckts |
|  |       |      |      | ORDER No.             | SAMPLE PREPARATION |                         |      |
|  |       |      |      |                       | O : TOOLED         |                         |      |
|  |       |      |      |                       | □ : WORK PROCESS   |                         |      |
|  |       |      |      |                       | ---                | TOOLING TO BE CONFIRMED |      |
| <b>CONNECTOR SERIES No. : 2167000***</b> |       |      |      |                       |                    |                         |      |

|  |   |                        |                          |   |                               |                                      |                 |                 |                |
|--|---|------------------------|--------------------------|---|-------------------------------|--------------------------------------|-----------------|-----------------|----------------|
| FUNCTIONAL SYMBOLS<br>FA = 0<br>FE = 0<br>FE = 0     | THIS DRAWING CONTAINS INFORMATION THAT IS PROPRIETARY TO MOLEX ELECTRONIC TECHNOLOGIES, LLC AND SHOULD NOT BE USED WITHOUT WRITTEN PERMISSION | SCALE<br>10:1          | CURRENT REV DESC:        |   | <b>molex</b>                  |                                      |                 |                 |                |
|  | GENERAL TOLERANCES (UNLESS SPECIFIED)   | EC NO: 677745          | DRWN: DWLEE02 2021/09/16 |   |                               | ACB6 PLUS REC. ASSY H=0.6 GENERAL    |                 |                 |                |
|  | ANGULAR TOL ± 3.0°  | 4 PLACES ± 0.1         | 3 PLACES ± 0.1           | 2 PLACES ± 0.1  |                               | PRODUCT CUSTOMER DRAWING             |                 |                 |                |
|  | DIVISIONAL SYMBOLS  | 1 PLACE ± 0.1          | 0 PLACES ± 0.2           | INITIAL REVISION:<br>DRWN: DWLEE02 2020/09/08<br>APPR: SHCHU 2021/09/16 |                               | DOCUMENT NUMBER<br><b>2167000002</b> |                 |                 |                |
| DRAFT WHERE APPLICABLE MUST REMAIN WITHIN DIMENSIONS |   | THIRD ANGLE PROJECTION | DRAWING<br>A3-SIZE       | SERIES<br>216700  | MATERIAL NUMBER<br>SEE SHEET1 | CUSTOMER                             | DOC TYPE<br>PSD | DOC PART<br>000 | REVISION<br>A3 |



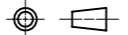
**RECOMMENDED P.C.BOARD PATTERN LAYOUT**  
(FOR REFERENCE)

 SOLDER PROHIBITED AREA.  
WHEN WIRING IS LOCATED,  
THE WIRING MUST BE MASKED BY COVER LAY OR RESIST FILM.

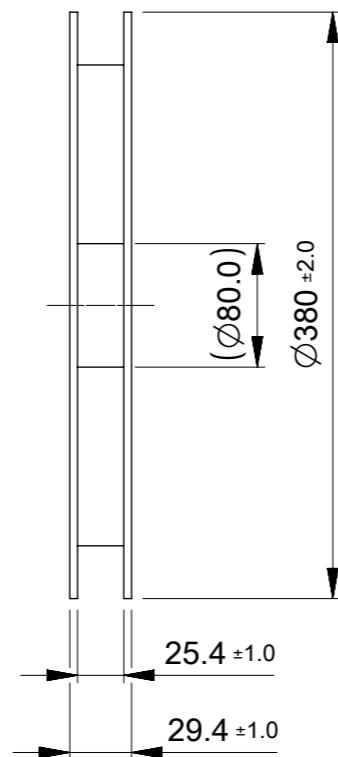
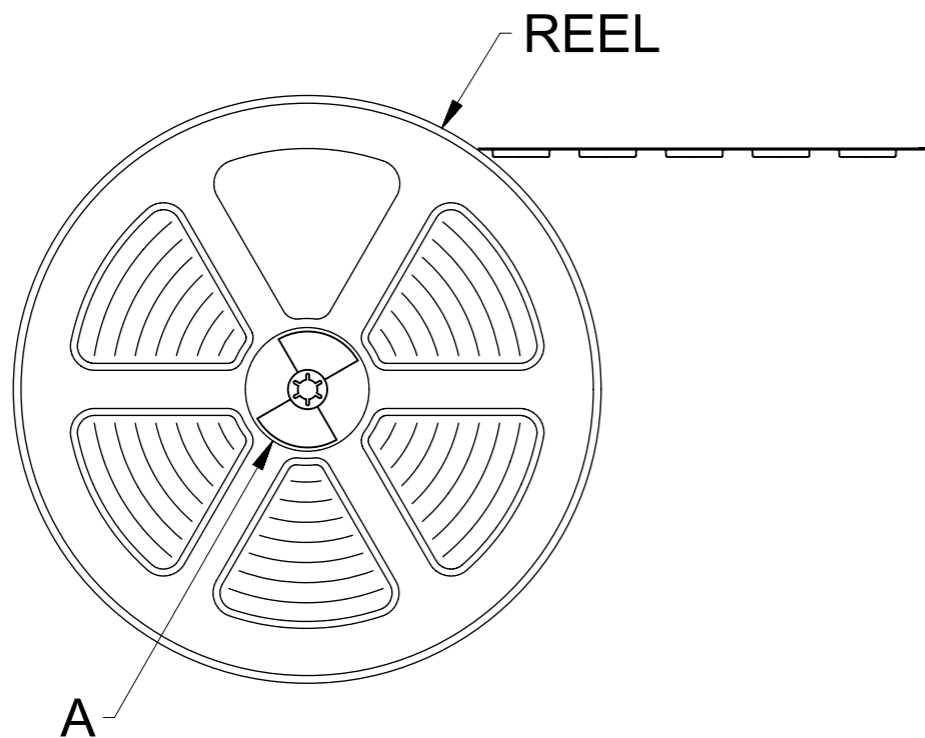


**RECOMMENDED METAL MASK LAYOUT**  
(FOR REFERENCE)

RECOMMENDED THICKNESS : 0.08mm  
RECOMMENDED APERTURE DIMENSION IS JUST SAME AS SHOWN FIGURE ABOVE.  
FOR THIS DIMENSION, APERTURE RATIO ARE SIGNAL TERMINAL 100% AND  
FITTING NAIL ALL 120%.

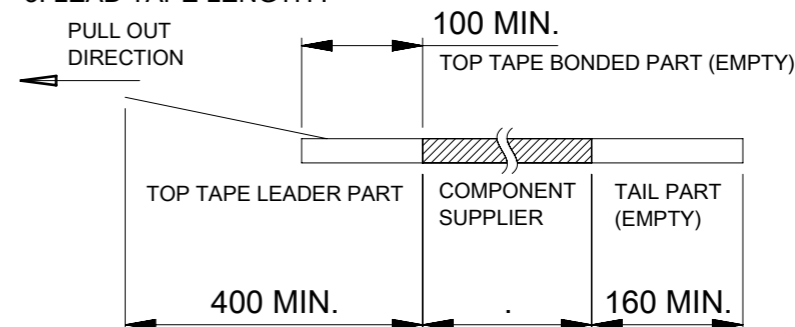
|  |   |   |                          |                 |                                   |              |          |
|--|---|---|--------------------------|-----------------|-----------------------------------|--------------|----------|
| FUNCTIONAL SYMBOLS                                   | THIS DRAWING CONTAINS INFORMATION THAT IS PROPRIETARY TO MOLEX ELECTRONIC TECHNOLOGIES, LLC AND SHOULD NOT BE USED WITHOUT WRITTEN PERMISSION |   | CURRENT REV DESC:        |                 | <b>molex</b>                      |              |          |
|  | △/A = 0   | mm 10:1   |                          |                 |                                   |              |          |
| DIVISIONAL SYMBOLS                                   | GENERAL TOLERANCES (UNLESS SPECIFIED)   |   | EC NO: 677745            |                 | ACB6 PLUS REC. ASSY H=0.6 GENERAL |              |          |
|  | ANGULAR TOL ± 3.0°  |   | DRWN: DWLEE02 2021/09/16 |                 | PRODUCT CUSTOMER DRAWING          |              |          |
|  | 4 PLACES ± 0.1  |   | CHK'D: SHCHU 2021/09/16  |                 | DOCUMENT NUMBER                   |              |          |
|  | 3 PLACES ± 0.1  |   | APPR: SHCHU 2021/09/16   |                 | 2167000002                        |              | DOC TYPE |
|  | 2 PLACES ± 0.1  |   | INITIAL REVISION:        |                 | 000                               | REVISION     | A3       |
| 1 PLACE ± 0.1  |   | DRWN: DWLEE02 2020/09/08  |                          | MATERIAL NUMBER |                                   | CUSTOMER     |          |
| 0 PLACES ± 0.2                                       |   | APPR: SHCHU 2021/09/16  |                          | SEE SHEET1      |                                   | SHEET NUMBER |          |
| DRAFT WHERE APPLICABLE MUST REMAIN WITHIN DIMENSIONS |   | THIRD ANGLE PROJECTION  | DRAWING                  | SERIES          | CUSTOMER                          |              | 2 OF 4   |
|  |   |  | A3-SIZE                  | 216700          |                                   |              |          |

⇒ PULL OUT DIRECTION

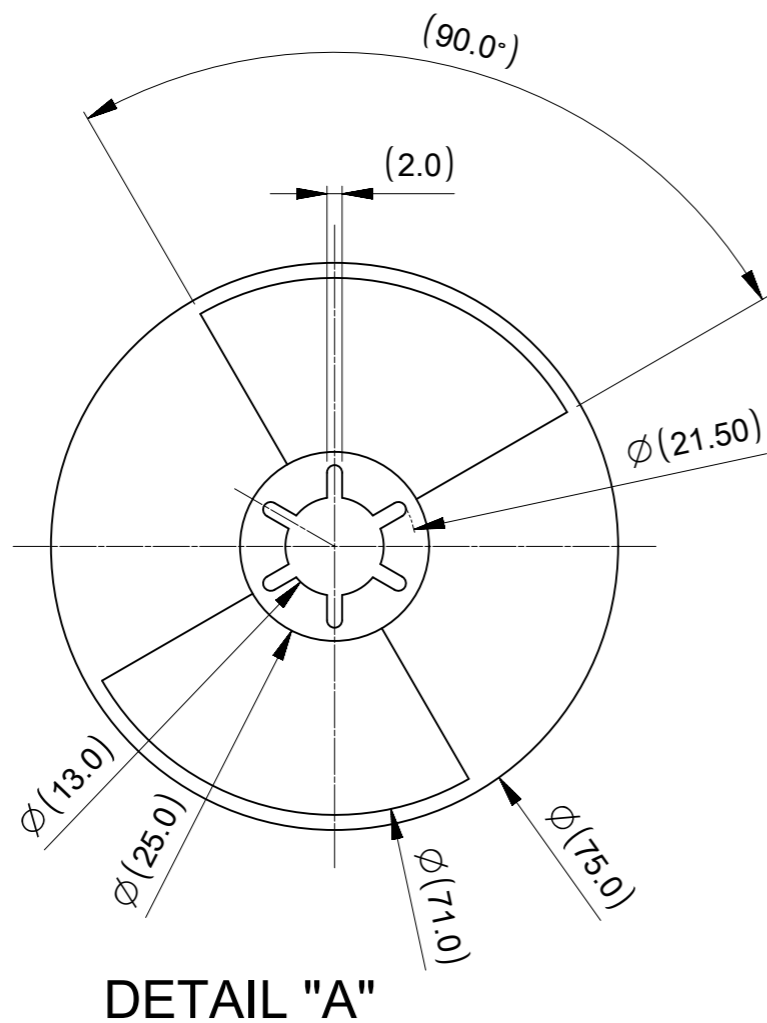


NOTES

1. RE DETAILED DIMENSION, SEE PRODUCT DRAWING.
2. NUMBER OF CONNECTORS : 20,000PCS/REEL
3. LEAD TAPE LENGTH :



4. PEEL OFF FORCE OF THE TOP TAPE IS DEFINED BY IEC 60286-3.
5. MATERIAL
  - CARRIER TAPE : POLYSTYRENE OR PET
  - TOP TAPE : PET, OTHER
  - REEL : POLYSTYRENE(PS) [RECYCLE MATERIAL CONTAINED]



FOR INFORMATION USE ONLY

|                    |   |       |                        |                 |                                   |
|--------------------|---|-------|------------------------|-----------------|-----------------------------------|
| FUNCTIONAL SYMBOLS | THIS DRAWING CONTAINS INFORMATION THAT IS PROPRIETARY TO MOLEX ELECTRONIC TECHNOLOGIES, LLC AND SHOULD NOT BE USED WITHOUT WRITTEN PERMISSION |       | CURRENT REV DESC:      |                 | <b>molex</b>                      |
|                    | △/A = 0   | mm    | SCALE 1:1              |                 |                                   |
| △/E = 0            | GENERAL TOLERANCES (UNLESS SPECIFIED)   |       |                        |                 | ACB6 PLUS REC. ASSY H=0.6 GENERAL |
| △/F = 0            | ANGULAR TOL ± 3.0°  |       |                        |                 |                                   |
| DIVISIONAL SYMBOLS | 4 PLACES  | ± 0.1 | EC NO: 677745          |                 |                                   |
|                    | 3 PLACES  | ± 0.1 | DRWN: DWLEE02          | 2021/09/16      |                                   |
|                    | 2 PLACES  | ± 0.1 | CHK'D: SHCHU           | 2021/09/16      |                                   |
|                    | 1 PLACE   | ± 0.1 | APPR: SHCHU            | 2021/09/16      |                                   |
|                    | 0 PLACES  | ± 0.2 | INITIAL REVISION:      |                 |                                   |
|                    | DRAFT WHERE APPLICABLE MUST REMAIN WITHIN DIMENSIONS  |       | THIRD ANGLE PROJECTION | DRAWING         | SERIES                            |
|                    |   |       | ⊕                      | A3-SIZE         | 216700                            |
|                    |   |       |                        | MATERIAL NUMBER | CUSTOMER                          |
|                    |   |       |                        | SEE SHEET 1     |                                   |
|                    |   |       |                        | DOCUMENT NUMBER | DOC TYPE   DOC PART   REVISION    |
|                    |   |       |                        | 2167000002      | PSD   000   A3                    |
|                    |   |       |                        |                 | SHEET NUMBER                      |
|                    |   |       |                        |                 | 3 OF 4                            |

PULL OUT DIRECTION →

EMBOSSSED TAPE

TOP TAPE

H ±0.1

R

S

∅ 1.55 ±0.05

4.0 ±0.1

2.0 ±0.1

1.75 ±0.1

J ±0.1

G ±0.1

R

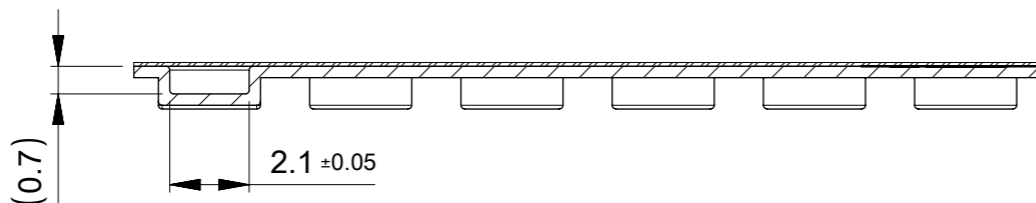
0.3 ±0.05

(1.1)

4.0 ±0.1

(ACCUMULATIVE : PITCH 40±2)

SECTION S-S



SECTION R-R

|                                   |      |      |                        |                    |                         |      |
|-----------------------------------|------|------|------------------------|--------------------|-------------------------|------|
| 11.33                             | 11.5 | 24.0 | 2167000501             | O                  | ---                     | 50   |
| 9.58                              | 11.5 | 24.0 | 2167000401             | O                  | ---                     | 40   |
| H                                 | J    | G    | EMBOSSSED TAPE PACKAGE | HIGH VOL. TOOL     | LOW VOL. TOOL           | Ckts |
|                                   |      |      | ORDER No.              | SAMPLE PREPARATION |                         |      |
|                                   |      |      |                        | O : TOOLED         |                         |      |
|                                   |      |      |                        | □ : WORK PROCESS   |                         |      |
|                                   |      |      |                        | ---                | TOOLING TO BE CONFIRMED |      |
| CONNECTOR SERIES No. : 2167000*** |      |      |                        |                    |                         |      |

FOR INFORMATION USE ONLY

|  |   |                                       |                 |                          |            |          |
|--|---|---------------------------------------|-----------------|--------------------------|------------|----------|
| FUNCTIONAL SYMBOLS                                   | THIS DRAWING CONTAINS INFORMATION THAT IS PROPRIETARY TO MOLEX ELECTRONIC TECHNOLOGIES, LLC AND SHOULD NOT BE USED WITHOUT WRITTEN PERMISSION | CURRENT REV DESC:                     |                 | <b>molex</b>             |            |          |
|  | ∇A = 0  | mm                                    | 5:1             |                          |            |          |
|  | ∇E = 0  | GENERAL TOLERANCES (UNLESS SPECIFIED) |                 | PRODUCT CUSTOMER DRAWING |            |          |
|  | ∇F = 0  | ANGULAR TOL ± 3.0°                    | 4 PLACES ± 0.1  | EC NO: 677745            | 2021/09/16 |          |
| DIVISIONAL SYMBOLS                                   | 3 PLACES ± 0.1  | DRWN: DWLEE02                         | 2021/09/16      |                          |            |          |
|  | 2 PLACES ± 0.1  | CHK'D: SHCHU                          | 2021/09/16      |                          |            |          |
|  | 1 PLACE ± 0.1   | APPR: SHCHU                           | 2021/09/16      |                          |            |          |
|  | 0 PLACES ± 0.2  | INITIAL REVISION:                     |                 |                          |            |          |
| DRAFT WHERE APPLICABLE MUST REMAIN WITHIN DIMENSIONS |   | DRWN: DWLEE02                         | 2020/09/08      | DOCUMENT NUMBER          | DOC TYPE   | DOC PART |
| THIRD ANGLE PROJECTION                               |   | APPR: SHCHU                           | 2021/09/16      | 2167000002               | PSD        | 000      |
| DRAWING  |   | SERIES                                | MATERIAL NUMBER | CUSTOMER                 | REVISION   |          |
| A3-SIZE  |   | 216700                                | SEE SHEET 1     |                          | A3         |          |
| SHEET NUMBER   |   | 4 OF 4                                |                 |                          |            |          |