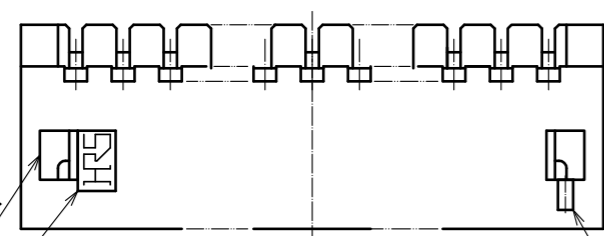
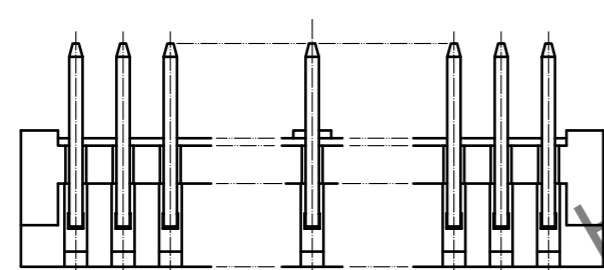
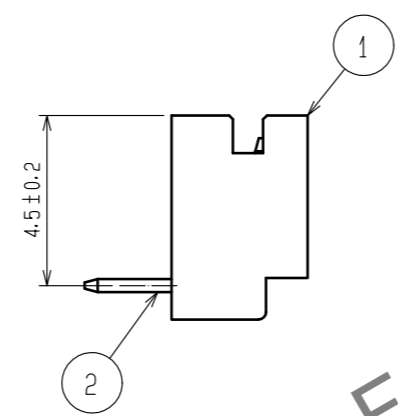
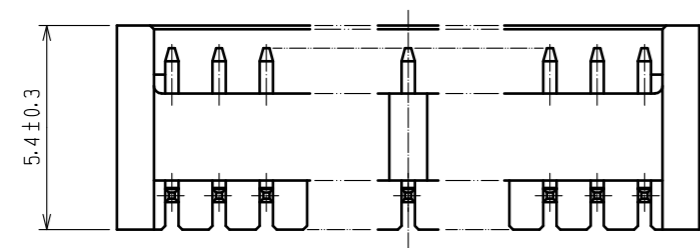
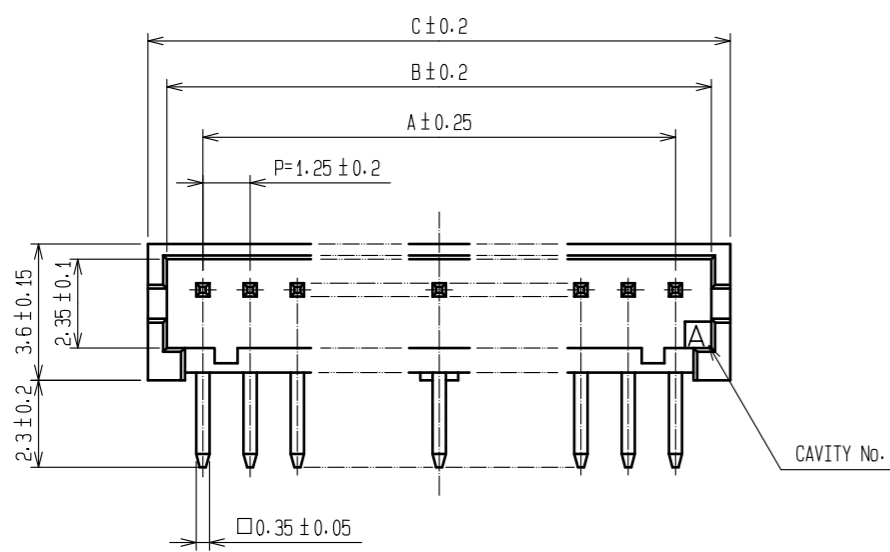


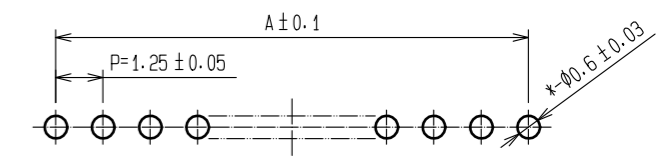
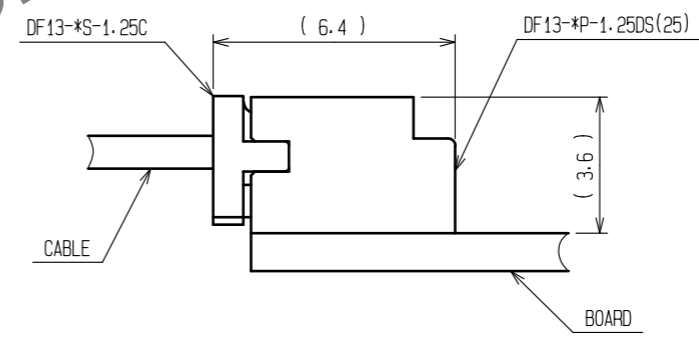
Dec.1.2024 Copyright 2024 HIROSE ELECTRIC CO., LTD. All Rights Reserved.
In case of consideration for using Automotive equipment / device which demand high reliability, kindly contact our sales window correspondents.



PART No.	CODE No.	NUMBER OF CONTACTS	A	B	C
DF13- 2P-1.25DS(25)	CL536-0151-7-25	2	1.25	3.15	4.15
DF13- 3P-1.25DS(25)	CL536-0152-0-25	3	2.50	4.40	5.40
DF13- 4P-1.25DS(25)	CL536-0153-2-25	4	3.75	5.65	6.65
DF13- 5P-1.25DS(25)	CL536-0154-5-25	5	5.00	6.90	7.90
DF13- 6P-1.25DS(25)	CL536-0155-8-25	6	6.25	8.15	9.15
DF13- 7P-1.25DS(25)	CL536-0156-0-25	7	7.50	9.40	10.40
DF13- 8P-1.25DS(25)	CL536-0157-3-25	8	8.75	10.65	11.65
DF13- 9P-1.25DS(25)	CL536-0158-6-25	9	10.00	11.90	12.90
DF13-10P-1.25DS(25)	CL536-0159-9-25	10	11.25	13.15	14.15
DF13-11P-1.25DS(25)	CL536-0160-8-25	11	12.50	14.40	15.40
DF13-12P-1.25DS(25)	CL536-0161-0-25	12	13.75	15.65	16.65
DF13-14P-1.25DS(25)	CL536-0163-6-25	14	16.25	18.15	19.15
DF13-15P-1.25DS(25)	CL536-0164-9-25	15	17.50	19.40	20.40

2 APPLICATION FIGURE

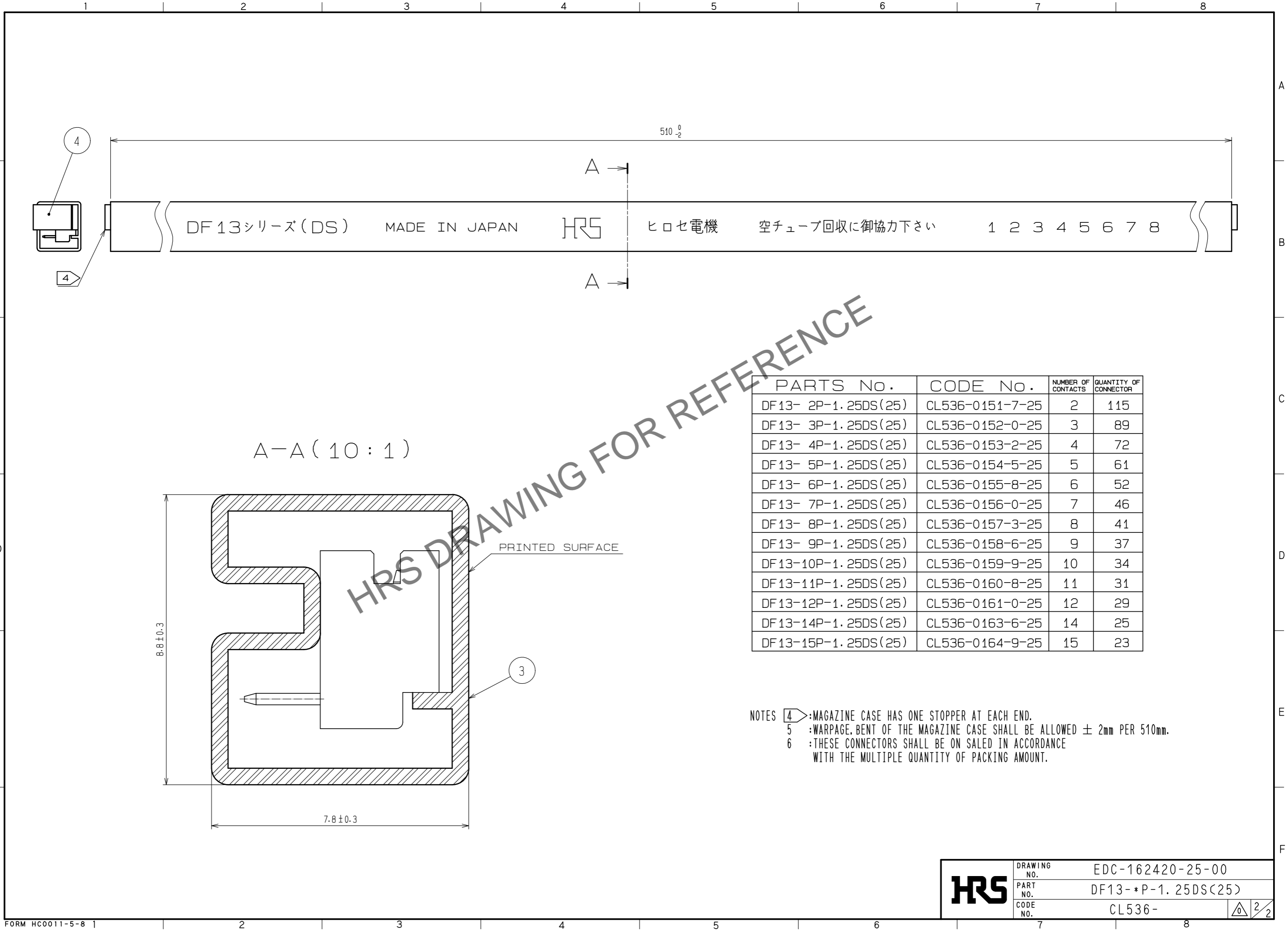
3 RECOMMENDED PATTERN (BOARD THICKNESS 1mm)



- NOTE 1 WHEN THIS CONNECTOR HAS TWO OR THREE CONTACTS, THE LOCK OF CONNECTOR SHALL BE SET AT THE CENTER OF HOUSING. IN CASE THAT THE NUMBER OF CONTACTS IS MORE THAN FOUR, THE TWO LOCKS SHALL BE SET IN ACCORDANCE WITH THE LEFT DRAWINGS.
- 2 WHEN THIS CONNECTOR MATES WITH DF13-*S-1.25C, THE MATING LENGTH IS 6.4mm.
- 3 RECOMMENDED DIP POST DIA. : $\phi 0.6 \pm 0.03$

2	BRASS	SURFACE:TIN PLATED 1μm min. UNDER:COPPER PLATED 1μm min.	4	ELASTOMER	STOPPER, GRAY			
1	POLYAMIDE	NATURAL (BEIGE), UL94V-0	3	P S	ELECTROSTATIC PROTECTION, CLEAR			
NO.	MATERIAL	FINISH . REMARKS	NO.	MATERIAL	FINISH . REMARKS			
UNITS mm		SCALE 5 : 1		COUNT	DESCRIPTION OF REVISIONS	DESIGNED	CHECKED	DATE
		APPROVED : SJ. OKAMURA	20211216	DRAWING NO.		EDC-162420-25-00		
HIROSE ELECTRIC CO., LTD.		CHECKED : SZ. ONO	20211216	PART NO.		DF13-*P-1.25DS(25)		
		DESIGNED : TH. SATO	20211215	CODE NO.		CL536-		
		DRAWN : TH. SATO	20211215					

Dec.1.2024 Copyright 2024 HIROSE ELECTRIC CO., LTD. All Rights Reserved.
 In case of consideration for using Automotive equipment / device which demand high reliability, kindly contact our sales window correspondents.



DF13シリーズ (DS) MADE IN JAPAN HRS ヒロセ電機 空チューブ回収に御協力下さい 1 2 3 4 5 6 7 8

PARTS No.	CODE No.	NUMBER OF CONTACTS	QUANTITY OF CONNECTOR
DF13- 2P-1.25DS(25)	CL536-0151-7-25	2	115
DF13- 3P-1.25DS(25)	CL536-0152-0-25	3	89
DF13- 4P-1.25DS(25)	CL536-0153-2-25	4	72
DF13- 5P-1.25DS(25)	CL536-0154-5-25	5	61
DF13- 6P-1.25DS(25)	CL536-0155-8-25	6	52
DF13- 7P-1.25DS(25)	CL536-0156-0-25	7	46
DF13- 8P-1.25DS(25)	CL536-0157-3-25	8	41
DF13- 9P-1.25DS(25)	CL536-0158-6-25	9	37
DF13-10P-1.25DS(25)	CL536-0159-9-25	10	34
DF13-11P-1.25DS(25)	CL536-0160-8-25	11	31
DF13-12P-1.25DS(25)	CL536-0161-0-25	12	29
DF13-14P-1.25DS(25)	CL536-0163-6-25	14	25
DF13-15P-1.25DS(25)	CL536-0164-9-25	15	23

NOTES ④ :MAGAZINE CASE HAS ONE STOPPER AT EACH END.
 ⑤ :WARPAGE, BENT OF THE MAGAZINE CASE SHALL BE ALLOWED ± 2mm PER 510mm.
 ⑥ :THESE CONNECTORS SHALL BE ON SALED IN ACCORDANCE WITH THE MULTIPLE QUANTITY OF PACKING AMOUNT.

HRS	DRAWING NO.	EDC-162420-25-00
	PART NO.	DF13-*P-1.25DS(25)
	CODE NO.	CL536-