

This document is the property of Amphenol Corporation and is delivered on the express condition that is not to be disclosed, reproduced or used, in whole or in part, for manufacture or sale by anyone other than Amphenol Corporation without its prior consent, and that no right is granted to disclose or to use any information in this document.

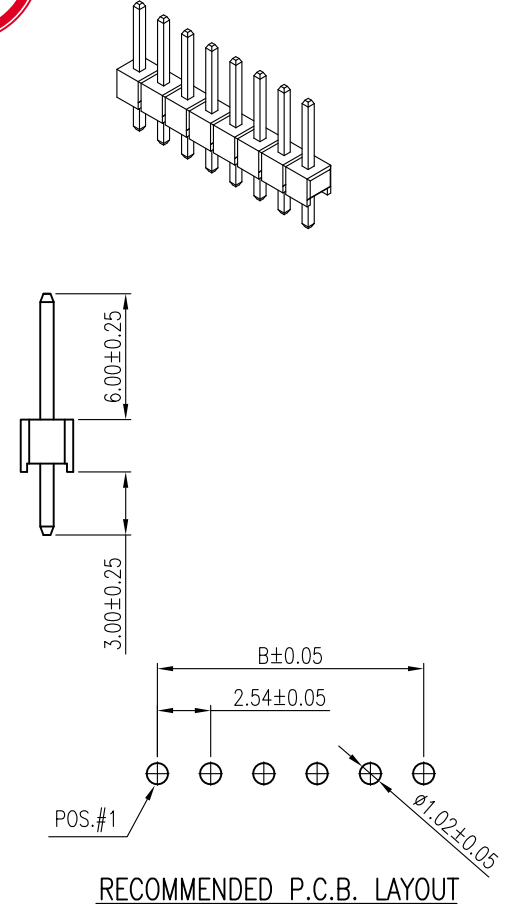
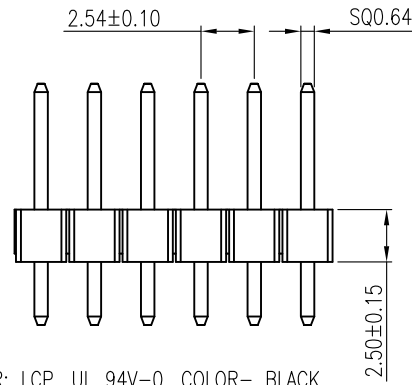
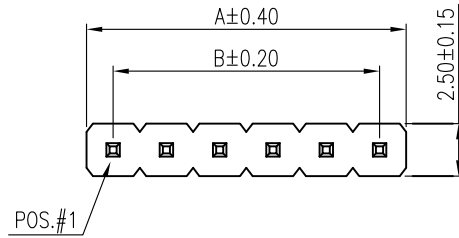
The marking on this product doesn't contain environmental hazardous materials per directive 2011/65/EU for RoHS compliant.



ORIGINAL

REVISIONS				
SYM	ECN No.	DESCRIPTION	DATE	APPROVED
A	NE-15151	RELEASE REVISION	11/12/2015	Roger Tsai
B	NE-20020	ADDED SERIES PKG	03/18/2020	Roger Tsai

G800 LQ 268 XXX HR	1 x 40 = 40	101.60	99.06
G800 LQ 269 XXX HR	1 x 39 = 39	99.06	96.52
G800 LQ 270 XXX HR	1 x 38 = 38	96.52	93.98
G800 LQ 271 XXX HR	1 x 37 = 37	93.98	91.44
G800 LQ 272 XXX HR	1 x 36 = 36	91.44	88.90
G800 LQ 273 XXX HR	1 x 35 = 35	88.90	86.36
G800 LQ 274 XXX HR	1 x 34 = 34	86.36	83.82
G800 LQ 275 XXX HR	1 x 33 = 33	83.82	81.28
G800 LQ 276 XXX HR	1 x 32 = 32	81.28	78.74
G800 LQ 277 XXX HR	1 x 31 = 31	78.74	76.20
G800 LQ 278 XXX HR	1 x 30 = 30	76.20	73.66
G800 LQ 279 XXX HR	1 x 29 = 29	73.66	71.12
G800 LQ 280 XXX HR	1 x 28 = 28	71.12	68.58
G800 LQ 281 XXX HR	1 x 27 = 27	68.58	66.04
G800 LQ 282 XXX HR	1 x 26 = 26	66.04	63.50
G800 LQ 283 XXX HR	1 x 25 = 25	63.50	60.96
G800 LQ 284 XXX HR	1 x 24 = 24	60.96	58.42
G800 LQ 285 XXX HR	1 x 23 = 23	58.42	55.88
G800 LQ 286 XXX HR	1 x 22 = 22	55.88	53.34
G800 LQ 287 XXX HR	1 x 21 = 21	53.34	50.80
G800 LQ 288 XXX HR	1 x 20 = 20	50.80	48.26
G800 LQ 289 XXX HR	1 x 19 = 19	48.26	45.72
G800 LQ 290 XXX HR	1 x 18 = 18	45.72	43.18
G800 LQ 291 XXX HR	1 x 17 = 17	43.18	40.64
G800 LQ 292 XXX HR	1 x 16 = 16	40.64	38.10
G800 LQ 293 XXX HR	1 x 15 = 15	38.10	35.56
G800 LQ 294 XXX HR	1 x 14 = 14	35.56	33.02
G800 LQ 295 XXX HR	1 x 13 = 13	33.02	30.48
G800 LQ 296 XXX HR	1 x 12 = 12	30.48	27.94
G800 LQ 297 XXX HR	1 x 11 = 11	27.94	25.40
G800 LQ 298 XXX HR	1 x 10 = 10	25.40	22.86
G800 LQ 299 XXX HR	1 x 9 = 9	22.86	20.32
G800 LQ 300 XXX HR	1 x 8 = 8	20.32	17.78
G800 LQ 301 XXX HR	1 x 7 = 7	17.78	15.24
G800 LQ 302 XXX HR	1 x 6 = 6	15.24	12.70
G800 LQ 303 XXX HR	1 x 5 = 5	12.70	10.16
G800 LQ 304 XXX HR	1 x 4 = 4	10.16	7.62
G800 LQ 305 XXX HR	1 x 3 = 3	7.62	5.08
G800 LQ 306 XXX HR	1 x 2 = 2	5.08	2.54
PART NUMBER	NO. OF POS.	A	B



NOTES:

- INSULATOR: LCP, UL 94V-0, COLOR- BLACK
- CONTACT: COPPER ALLOY, "XXX"- PIN CONTACT/SOLDER PLATING
 "005"- 15μ" GOLD/GOLD FLASH
 "010"- 30μ" GOLD/GOLD FLASH
 "018"- GOLD FLASH/GOLD FLASH
 "025"- 5μ" GOLD/GOLD FLASH
 "032"- 100μ" MATTE TIN/100μ" MATTE TIN
- THIS PRODUCT DOESN'T CONTAIN ENVIRONMENTAL HAZARDOUS MATERIALS PER DIRECTIVE 2011/65/EU FOR RoHS.
- PACKING IS PER AMTA PACKING SPECIFICATION PKS-0001
- CURRENT RATING: 3.0 Amps/contact MAX.
- WITHSTANDING VOLTAGE: 1000V AC/MINUTE
- PRODUCT SPECIFICATION REFER TO : PS-7501
- TEST SUMMARY REFER TO : TS-7501-001

TOLERANCE		APPROVALS		DATE	TITLE	Amphenol®	
X.		DRAWN	Aqua Chou	03/18/2020	G800 SERIES SINGLE ROW HEADER 2.54MM-PITCH STRAIGHT PCB MOUNT	Amphenol Corporation Amphenol Taiwan Corporation	
X.X	±0.30	CHECKED	Karen Su	03/18/2020		PART No.	G800LQXXXXXHR
X.XX	±0.20	APPROVED	Roger Tsai	03/18/2020		DWG No.	G800LQXXXXXHR
X.XXX	±0.10	UNLESS OTHERWISE SPECIFIED		CUST DWG	PROJECT CODE	HEAD	REV. B
ANGULAR	±1°	UNIT		mm	SIZE	A3	
		SCALE		NA	SHEET	1 OF 4	

This document is the property of Amphenol Corporation and is delivered on the express condition that is not to be disclosed, reproduced or used, in whole or in part, for manufacture or sale by anyone other than Amphenol Corporation without its prior consent, and that no right is granted to disclose or to use any information in this document.
The marking on this product doesn't contain environmental hazardous materials per directive 2011/65/EU for RoHS compliant.

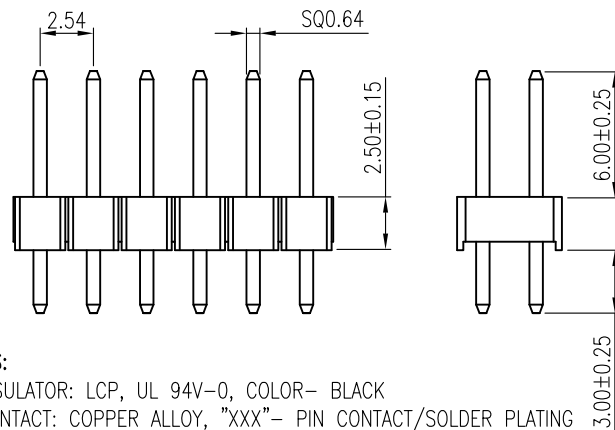
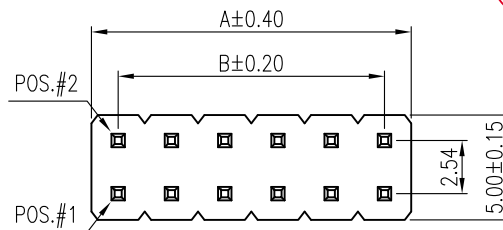


ORIGINAL



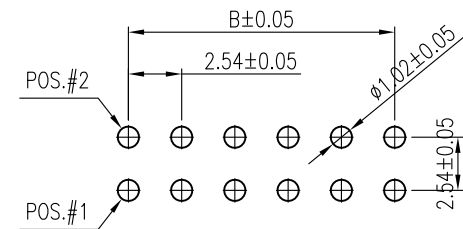
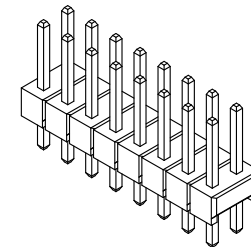
REVISIONS				
SYM	ECN No.	DESCRIPTION	DATE	APPROVED
A	NE-15151	RELEASE REVISION	11/12/2015	Roger Tsai
B	NE-20020	ADDED SERIES PKG	03/18/2020	Roger Tsai

G800 LQ 556 XXX HR	2 x 40 = 80	101.6	99.06
G800 LQ 557 XXX HR	2 x 39 = 78	99.06	96.52
G800 LQ 558 XXX HR	2 x 38 = 76	96.52	93.98
G800 LQ 559 XXX HR	2 x 37 = 74	93.98	91.44
G800 LQ 560 XXX HR	2 x 36 = 72	91.44	88.90
G800 LQ 561 XXX HR	2 x 35 = 70	88.90	86.36
G800 LQ 562 XXX HR	2 x 34 = 68	86.36	83.82
G800 LQ 563 XXX HR	2 x 33 = 66	83.82	81.28
G800 LQ 564 XXX HR	2 x 32 = 64	81.28	78.74
G800 LQ 565 XXX HR	2 x 31 = 62	78.74	76.20
G800 LQ 566 XXX HR	2 x 30 = 60	76.20	73.66
G800 LQ 567 XXX HR	2 x 29 = 58	73.66	71.12
G800 LQ 568 XXX HR	2 x 28 = 56	71.12	68.58
G800 LQ 569 XXX HR	2 x 27 = 54	68.58	66.04
G800 LQ 570 XXX HR	2 x 26 = 52	66.04	63.50
G800 LQ 571 XXX HR	2 x 25 = 50	63.50	60.96
G800 LQ 572 XXX HR	2 x 24 = 48	60.96	58.42
G800 LQ 573 XXX HR	2 x 23 = 46	58.42	55.88
G800 LQ 574 XXX HR	2 x 22 = 44	55.88	53.34
G800 LQ 575 XXX HR	2 x 21 = 42	53.34	50.80
G800 LQ 576 XXX HR	2 x 20 = 40	50.80	48.26
G800 LQ 577 XXX HR	2 x 19 = 38	48.26	45.72
G800 LQ 578 XXX HR	2 x 18 = 36	45.72	43.18
G800 LQ 579 XXX HR	2 x 17 = 34	43.18	40.64
G800 LQ 580 XXX HR	2 x 16 = 32	40.64	38.10
G800 LQ 581 XXX HR	2 x 15 = 30	38.10	35.56
G800 LQ 582 XXX HR	2 x 14 = 28	35.56	33.02
G800 LQ 583 XXX HR	2 x 13 = 26	33.02	30.48
G800 LQ 584 XXX HR	2 x 12 = 24	30.48	27.94
G800 LQ 585 XXX HR	2 x 11 = 22	27.94	25.40
G800 LQ 586 XXX HR	2 x 10 = 20	25.40	22.86
G800 LQ 587 XXX HR	2 x 9 = 18	22.86	20.32
G800 LQ 588 XXX HR	2 x 8 = 16	20.32	17.78
G800 LQ 589 XXX HR	2 x 7 = 14	17.78	15.24
G800 LQ 590 XXX HR	2 x 6 = 12	15.24	12.70
G800 LQ 591 XXX HR	2 x 5 = 10	12.70	10.16
G800 LQ 592 XXX HR	2 x 4 = 8	10.16	7.62
G800 LQ 593 XXX HR	2 x 3 = 6	7.62	5.08
G800 LQ 594 XXX HR	2 x 2 = 4	5.08	2.54



NOTES:

- INSULATOR: LCP, UL 94V-0, COLOR- BLACK
- CONTACT: COPPER ALLOY, "XXX"- PIN CONTACT/SOLDER PLATING
 "005"- 15μ" GOLD/GOLD FLASH
 "010"- 30μ" GOLD/GOLD FLASH
 "018"- GOLD FLASH/GOLD FLASH
 "025"- 5μ" GOLD/GOLD FLASH
 "032"- 100μ" MATTE TIN/100μ" MATTE TIN
- THIS PRODUCT DOESN'T CONTAIN ENVIRONMENTAL HAZARDOUS MATERIALS PER DIRECTIVE 2011/65/EU FOR RoHS.
- PACKING IS PER AMTA PACKING SPECIFICATION PKS-0001
- CURRENT RATING: 3.0 Amps/contact MAX.
- WITHSTANDING VOLTAGE: 1000V AC/MINUTE
- PRODUCT SPECIFICATION REFER TO : PS-7501
- TEST SUMMARY REFER TO : TS-7501-001



RECOMMENDED P.C.B. LAYOUT

TOLERANCE		APPROVALS		DATE	TITLE		Amphenol®							
X.		DRAWN	Aqua Chou	03/18/2020	G800 SERIES DUAL ROWS HEADER 2.54MM-PITCH STRAIGHT PCB MOUNT		Amphenol Corporation Amphenol Taiwan Corporation							
X.X	±0.30	CHECKED	Karen Su	03/18/2020										
X.XX	±0.20	APPROVED	Roger Tsai	03/18/2020										
X.XXX	±0.10						UNIT	mm	SIZE	A3	PART No.	G800LQXXXXXXHR		
ANGULAR	±1°						SCALE	NA	SHEET	2 OF 4	DWG No.	G800LQXXXXXXHR	REV.	B
UNLESS OTHERWISE SPECIFIED		DWG TYPE		PROJECT CODE										
		CUST DWG		HEAD										

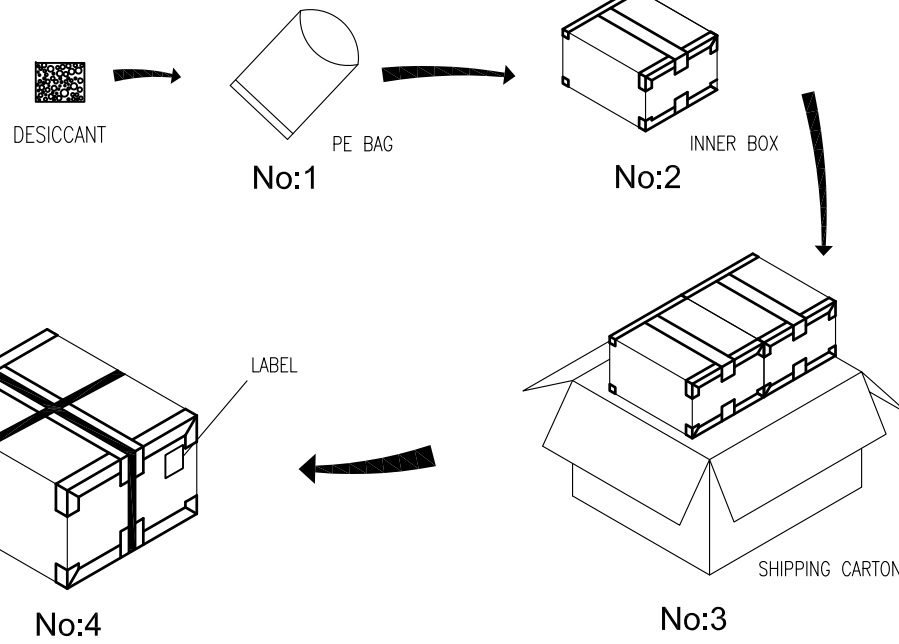
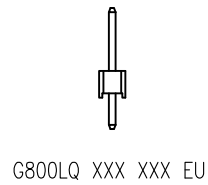
This document is the property of Amphenol Corporation and is delivered on the express condition that is not to be disclosed, reproduced or used, in whole or in part, for manufacture or sale by anyone other than Amphenol Corporation without its prior consent, and that no right is granted to disclose or to use any information in this document.
The marking on this product doesn't contain environmental hazardous materials per directive 2011/65/EU for RoHS compliant.



ORIGINAL



REVISIONS				
SYM	ECN No.	DESCRIPTION	DATE	APPROVED
A	NE-15151	RELEASE REVISION	11/12/2015	Roger Tsai
B	NE-20020	ADDED SERIES PKG	03/18/2020	Roger Tsai



1X40=40	200	5	2000
1X17=17	300	5	3000
1X15=15	300	5	3000
1X8=08	1000	6	12000
1X7=07	1000	6	12000
1X6=06	1000	6	12000
1X5=05	2000	5	20000
1X4=04	2000	5	20000
1X3=03	2000	6	24000
1X2=02	2000	15	60000
POS.	PCS/BAG	BAG/ INNER BOX	QUANTITY (Pcs)

NOTES:

1. INNER BOX SIZE : 215 X 175 X 150 mm
2. SHIPPING CARTON SIZE : 370 X 230 X 175 mm

TOLERANCE		APPROVALS		DATE	TITLE			Amphenol®					
X.		DRAWN	Aqua Chou	03/18/2020	G800 SERIES DUAL ROWS HEADER 2.54MM-PITCH STRAIGHT PCB MOUNT			Amphenol Corporation Amphenol Taiwan Corporation					
X.X	±0.30	CHECKED	Karen Su	03/18/2020									
X.XX	±0.20	APPROVED	Roger Tsai	03/18/2020									
X.XXX	±0.10	DWG TYPE	CUST DWG	PROJECT CODE							HEAD		
ANGULAR	±1°					UNIT	mm	SIZE	A3	PART No.	G800LQXXXXXXHR		
UNLESS OTHERWISE SPECIFIED						SCALE	NA	SHEET	3 OF 4	DWG No.	G800LQXXXXXXHR	REV.	B

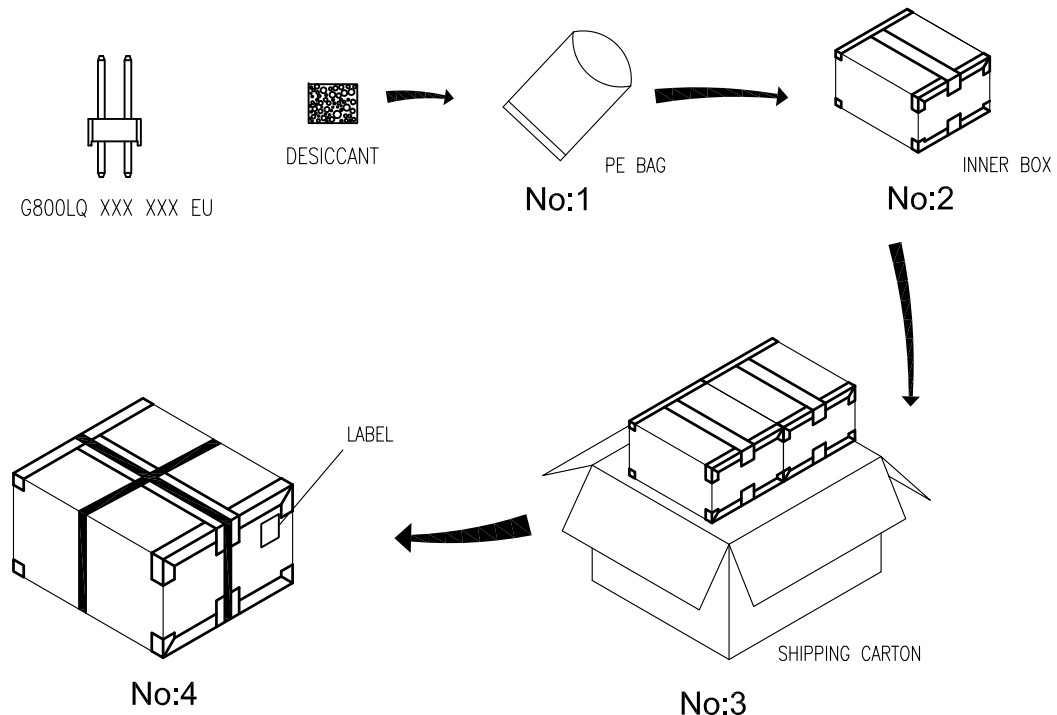
This document is the property of Amphenol Corporation and is delivered on the express condition that is not to be disclosed, reproduced or used, in whole or in part, for manufacture or sale by anyone other than Amphenol Corporation without its prior consent, and that no right is granted to disclose or to use any information in this document.
 The marking on this product doesn't contain environmental hazardous materials per directive 2011/65/EU for RoHS compliant.



ORIGINAL



REVISIONS				
SYM	ECN No.	DESCRIPTION	DATE	APPROVED
A	NE-15151	RELEASE REVISION	11/12/2015	Roger Tsai
B	NE-20020	ADDED SERIES PKG	03/18/2020	Roger Tsai



- NOTES:
1. INNER BOX SIZE : 215 X 175 X 150 mm
 2. SHIPPING CARTON SIZE : 370 X 230 X 175 mm

2X20=40	200	6	2400	2X40=80	100	6	1200
2X19=38	200	6	2400	2X39=78	100	6	1200
2X18=36	200	6	2400	2X38=76	100	6	1200
2X17=34	200	6	2400	2X37=74	100	6	1200
2X16=32	200	6	2400	2X36=72	100	6	1200
2X15=30	200	6	2400	2X35=70	100	6	1200
2X14=28	200	6	2400	2X34=68	100	6	1200
2X13=26	300	6	3600	2X33=66	100	6	1200
2X12=24	300	6	3600	2X32=64	100	6	1200
2X11=22	300	6	3600	2X31=62	100	6	1200
2X10=20	300	6	3600	2X30=60	100	6	1200
2X9=18	300	6	3600	2X29=58	100	6	1200
2X8=16	300	8	4800	2X28=56	100	6	1200
2X7=14	500	6	6000	2X27=54	100	6	1200
2X6=12	500	6	6000	2X26=52	150	6	1800
2X5=10	1000	6	12000	2X25=50	150	6	1800
2X4=08	2000	3	12000	2X24=48	150	6	1800
2X3=06	2000	5	20000	2X23=46	150	6	1800
2X2=04	2000	5	20000	2X22=44	150	6	1800
				2X21=42	200	6	2400
POS.	PCS/BAG	BAG/ INNER BOX	QUANTITY (PCS)	POS.	PCS/BAG	BAG/ INNER BOX	QUANTITY (PCS)

TOLERANCE	APPROVALS	DATE	TITLE		Amphenol®		
X. ±0.30	DRAWN Aqua Chou	03/18/2020	G800 SERIES DUAL ROWS HEADER 2.54MM-PITCH STRAIGHT PCB MOUNT		Amphenol Corporation Amphenol Taiwan Corporation		
X.X ±0.20	CHECKED Karen Su	03/18/2020					
X.XXX ±0.10	APPROVED Roger Tsai	03/18/2020					
ANGULAR ±1°	DWG TYPE CUST DWG	PROJECT CODE HEAD	UNIT mm	SIZE A3	PART No. G800LQXXXXXXHR		
UNLESS OTHERWISE SPECIFIED			SCALE NA	SHEET 3 OF 4	DWG No. G800LQXXXXXXHR REV. B		

